

# أجزاء المبارزة الزجاج المقاوم للصدأ لوحة الزجاج المشبك

شهادة بابا التحقق من الذهب زائد المورد و 12 سنوات العضوية SGS

## WHY CHOOSE US



### 15 YEARS EXPERIENCE

We have been manufacturing railing hardware since 2004.



### ONE STOP SERVICE

We provide integrated railing solutions. We manufacture. We deliver.



### PROFESSIONAL R&D TEAM

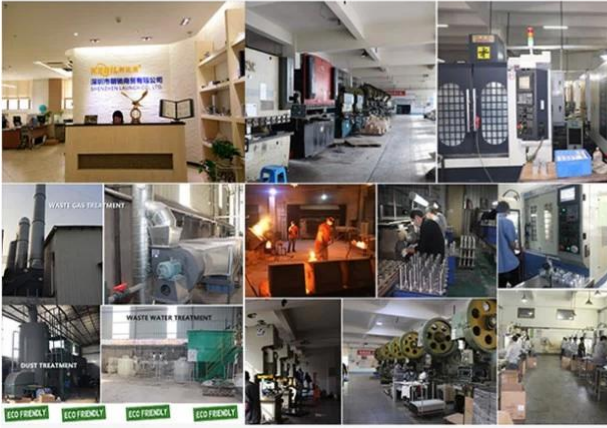
We have engineering experts for developing new products.



### TOP QUALITY & GOOD PRICE

We are strict on quality control as well as cost evaluation.

## ABOUT US



Shenzhen Launch Co., Ltd was established in 2004, located at Nanshan District, Shenzhen, and one hour by car from Hongkong International Airport. Our main products are high-grade building materials including stainless steel balustrade post, staircase handrail, balcony guardrail, swimming pool fence and other high-grade building materials. All the products are designed strictly according to the high-end market requirements. We have our own factory in Tangxia Town, Dongguan, with more than 50 sets of various precision equipments, such as CNC lathe, milling machine, punching machine, pipe cutter, argon welder, drilling machine, polisher, etc. which can provide customers with complete product processing services.

## COMPANY INTRODUCTION

Verification Type: Supplier Assessment Onsite Check



Country / Region:  
Guangdong, China ✓



Year Established:  
2004 ✓



Main Products:  
CNC Machining Parts, Stamping Pa... ✓



Main Markets:  
North America, Oceania, Mid East... ✓



Total Annual Revenue:  
confidential ✓



Total Employees:  
11 - 50 People ✓

Alibaba.com Gold Plus Supplier

Main Product Lines Verification Report

Presented to

**Shenzhen Launch Co., Ltd.**

深圳市朗驰商贸有限公司

Company Address	B5003, Building 3, Yilida Building, No. 1092 Nanshan Avenue, Dengliang Community, Nanshan Street, Nanshan District, Shenzhen City, Guangdong Province, China
Consigner of Assessment:	Alibaba
Gold Supplier Member ID:	launch168
Gold Supplier Company Name:	Shenzhen Launch Co., Ltd.
Contact Person:	Mr. Bin Feng Gao
Phone Number:	0086-13802569770
Fax Number:	0086-755-86372611
Email:	gbf999@china.com
Website Address (URL):	http://launch-china.en.alibaba.com

Service Provided by SGS  
Report No.: 19536352\_P+T



Alibaba.com Gold Plus Supplier

**Verified**

Assessment Report

Presented to

**Cooperation Company of Shenzhen Launch Co., Ltd.**

深圳市朗驰商贸有限公司合作工厂

Gold Supplier & Assessed Company Relationship:	<input type="checkbox"/> Self-owned <input type="checkbox"/> Wholly Owned <input type="checkbox"/> Shareholder/Partner <input type="checkbox"/> Kindred between Owners <input checked="" type="checkbox"/> Cooperation Partner
Company Address	Confidential
City / Country:	Huzhou / China
Consigner of Assessment:	Alibaba & Shenzhen Launch Co., Ltd.
Gold Supplier Member ID:	launch168
Gold Supplier Company Name:	Shenzhen Launch Co., Ltd.
Contact Person:	Confidential
Phone Number:	Confidential
Fax Number:	Confidential
Email:	Confidential
Website Address (URL):	http://launch-china.en.alibaba.com

Service Provided by SGS  
Report No.: 19552720\_P



المنتج اسم	الصلب الذي لا صلب زجاج المشبك
إنهاء	وصمة / مرآة / أسود / ذهب
إلى عن على زجاج سماكة	زجاج أو والعملاء المتطلبات 8-12MM
متزايد	حائط / أرضية / ميدان الدرايزين / مستدير - كروي الدرايزين
شكل	ميدان شكل / د شكل / مستدير - كروي شكل
مخصص زجاج المشبك	متاح، نحن هي مصنع
عينة	متاح إلى شيك جودة قبل طلب
تطبيق	في الخارج وفي الداخل زجاج سياج الدرج / شرفة / سطح السفينة / الشرفة

□□□□ □□□ □□□□□□□□ □□□□ □□□□□ □□□□

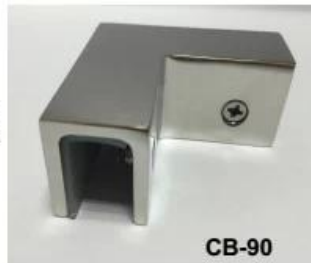
## Specifications of all glass clamps in our company

Drawing	Picture	Ref.	A	B	C	D	E
		G108	55	55	30	11	0
		G108R	58	55	30	11	R25.4
		G101	51	41	25	11	0
		G101R	55	41	25	11	R21.5/R25.4
		G102	44	44	25	11	0
		G102R	48	44	25	11	R21.5/R25.4
		G103	50	40	22	8	0
		G104	50	40	26	12	0
		G105	54	45	28	14	0
		G107	63	45	28	14	0
		G103R	52	40	22	8	R21.5
		G104R	52	40	26	12	R21.5
		G105R	58	45	28	14	R21.5/R25.4
		G107R	66	45	28	14	R21.5/R25.4
		G106	50	40	25	12	0
		G106R	52	40	25	12	R21.5/R25.4



**BC-80x35**

- Square 80x35mm clamps
- To hold **180°** glass panels
- For 8-12mm glass



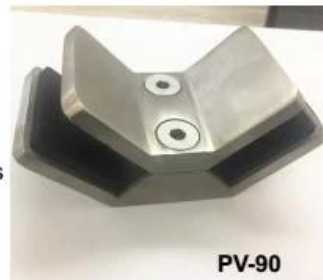
**CB-90**

- Corner glass clamp
- To hold **90°** glass panels
- For 8-12mm glass



**BC-60**

- Round  $\phi$ 60mm clamps
- To hold **180°** glass panels
- For 8-12mm glass



**PV-90**

- Corner glass clamp
- To hold **90°** glass panels
- For 12-15mm glass



**CB-180**

- **Glass to wall** clamps
- For 8-12mm glass



**PV-135**

- Corner glass clamp
- To hold **135°** glass panels
- For 8-12mm glass

□□□□ □□□□ □□□□ □□□□



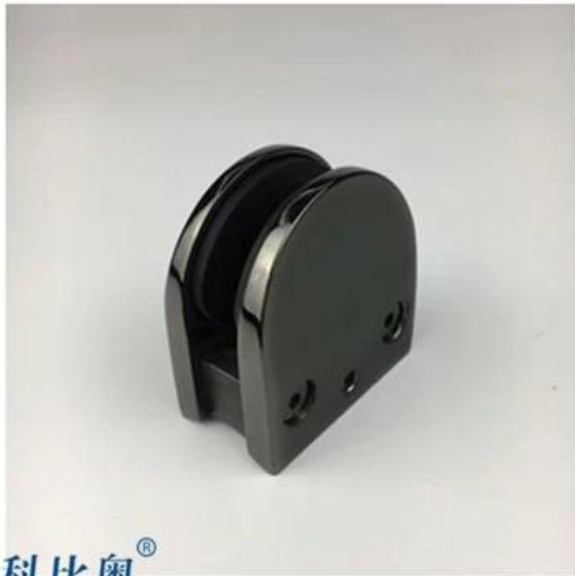








□□□□ □□□□ □□□□□□ □□□□ □□□□□□ □□□ / □□□□ / □□□□□□ / □□□□□



**KEBIL** 科比奥®







□□□□

شكرا لزيارتك !

أي استفسارات أو أسئلة ، يرجى ترك رسالة. سوف نعود اليكم في غضون 24 ساعة.

للاستفسار العاجل ، يرجى الاتصال أدناه:

-الاتصال: دوريس

البريد الإلكتروني: sales04@launch-china.cn

المكتب: (755-86) 7559 8603

النوع: launch\_04

ماذا يكون التطبيق: + 86-13530506265 / Mob