



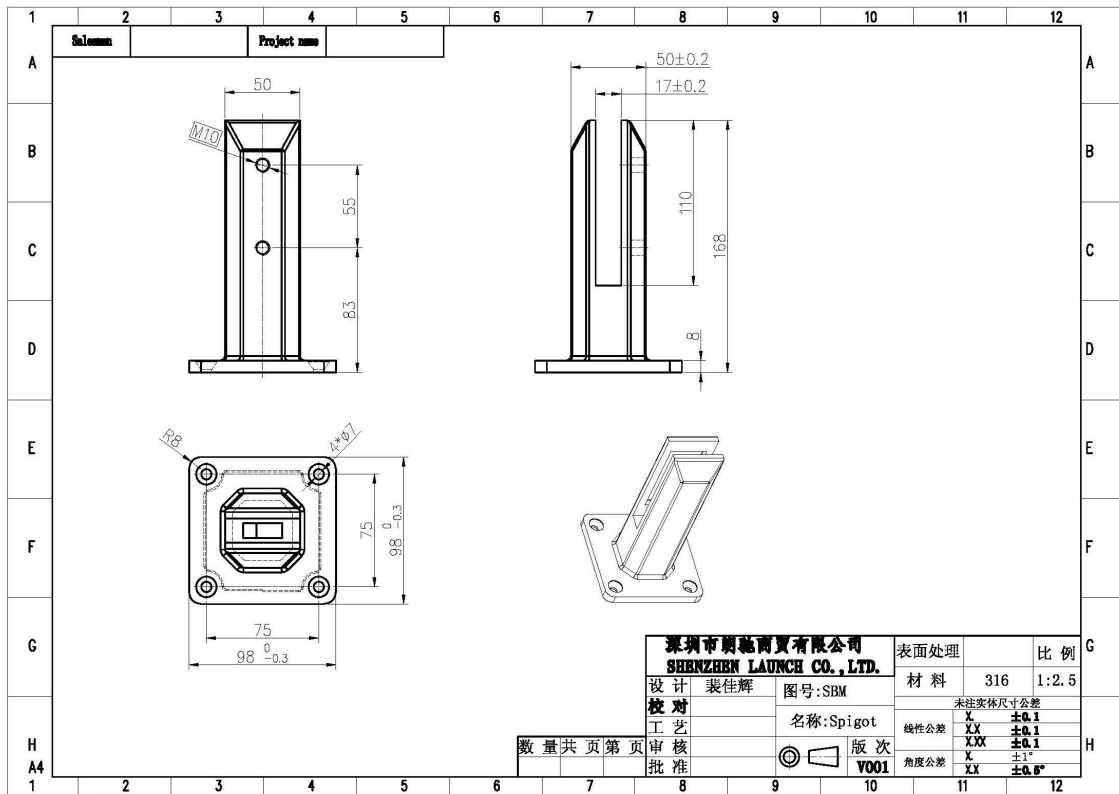


□□ □□ □□□□□□



2012/10/13

□□□□□□□□ □□□□ □□ □□□□ \_ □□□□ □□□□



□□□□□□ □□







□□□□ □□□□ □□□□

Results Summary  
 (For details of individual tests, refer to the tables on the following pages.)

ID	Item/Heat No.	Dimensions/Type/Details	Finish	Overall Assessment
14117/01	SSBM316	180mm High, 50mm Square, Base Plate 316 Stainless steel	316L	COMPLIES

Remarks

After completion of the testing, the spigot was found to be in sound condition with no breakage, tearing or signs of fracture and no looseness of the fixings.

Colin Lorrimar  
 Metallurgical Testing Manager



Accreditation No. ~~14117~~ 14117  
 Accredited for compliance  
 with ISO/IEC 17025

□□□□□□ □□□□







**የብርቅና የግብርና ስርዓት**

- የብርቅ ስርዓት ለ 12 ሰዓት ለማጠናቀቅ ይጠቀሳል።
- የብርቅ ስርዓት ለ (15-10 ሰዓት) ይጠቀሳል።



. . . . .  
! . . . . .



+ : 00000 00 00 973219879 : 00000 000 00000 000 000000 0000 000000 000000 0000  
13530506265-86.

KEBIL 科比奥

深圳市朗驰商贸有限公司  
SHENZHEN LAUNCH CO., LTD.

朗驰国际有限公司  
LAUNCH INTERNATIONAL LIMITED.

**董 萍** Doris Dong

Senior Sales Representative

☎ (86) 135 3050 6265

---

深圳市南山区南山大道1092号亿利达大厦B区3栋5003

Room 5003, Building 3, Yilida Building, No.1092  
Nanshan Road, Nanshan District, Shenzhen, China  
postal code 518054

---

☎ (86-755) 8603 7559

☎ (86-755) 8637 2611

✉ sales04@launch-china.cn

🌐 www.launch-china.com

www.chinabalustrade.com