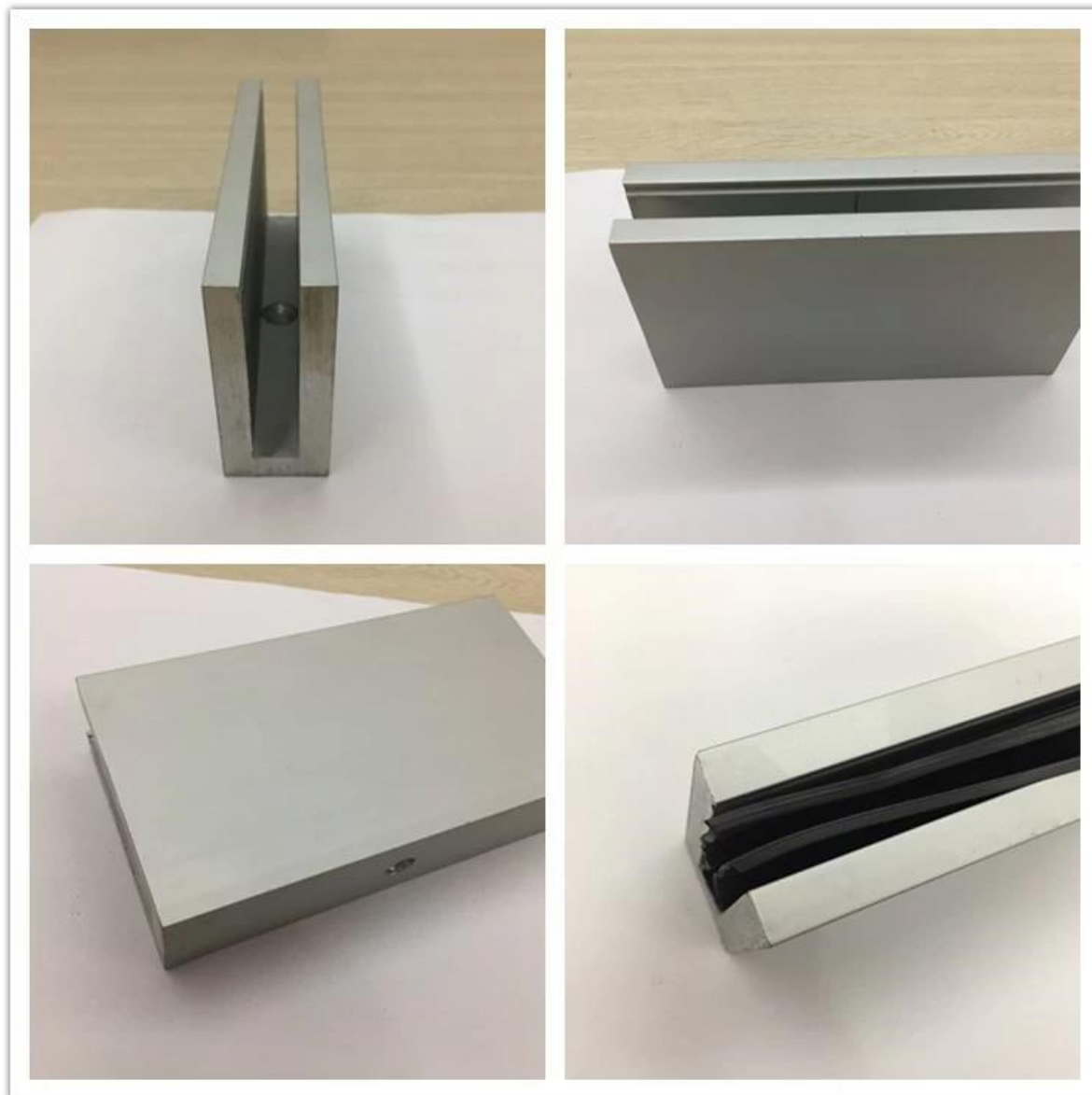


Heißes Verkaufs-Innenbalkon-Terrasse-ausgeglichenes Glasgeländer / U-Kanal-Aluminium-Profil für Glasgeländer



Aluminium-U-Profil-Spezifikationen:

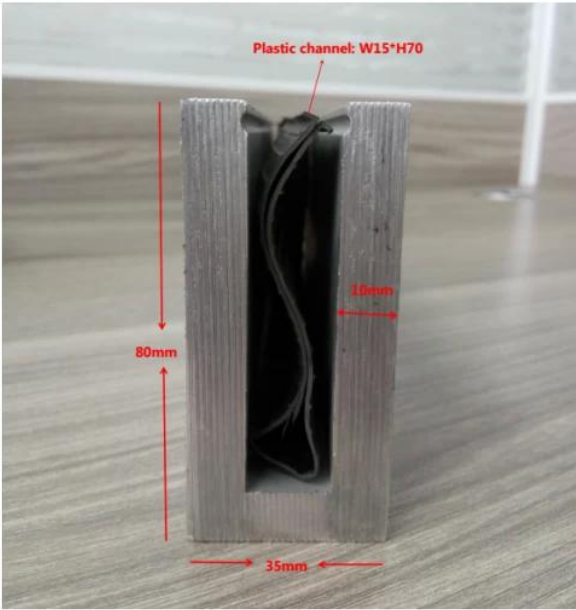
Artikel	Aluminium U-Kanal-ausgeglichenes Glas-Balkon-Geländer, U-Kanal-Glasbalustrade
Material	Aluminium 6063 T3
Fertig	Eloxiert / pulverbeschichtet
Größe	35 * 80mm / 63,5 * 104mm usw
Glasdicke	12mm bis 25mm
Schlitzrohr-Typen	Rund oder quadratisch
Installation	selbstschneidend / Explosionsschrauben / Schrauben
Montage	Boden montiert / Wandhalterung
Anwendung	Balkon, Terrasse, Veranda, Treppe, Terrasse, Lobby, Einkaufszentrum
Lieferung	15-30 Tage

Für kommerzielle und private Anwendungen
Für Groß- und Einzelhandel (Wir sind Hersteller)

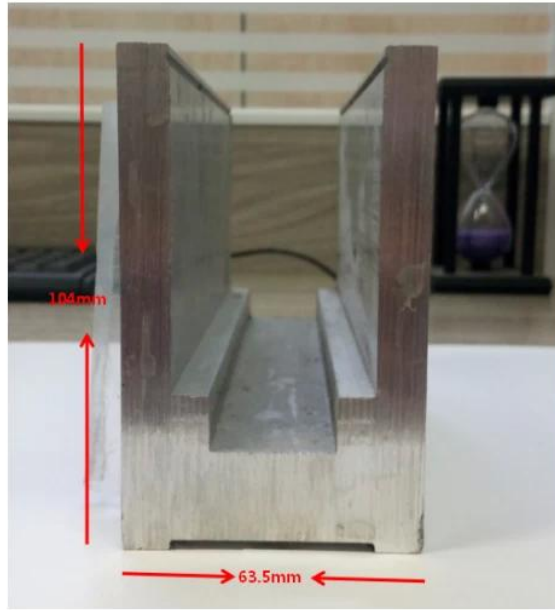


KLEIN & BIG TYPE ALUMINIUM U-KANAL FÜR GLASGELENK:

Small profile: for glass thickness 10-12.76mm

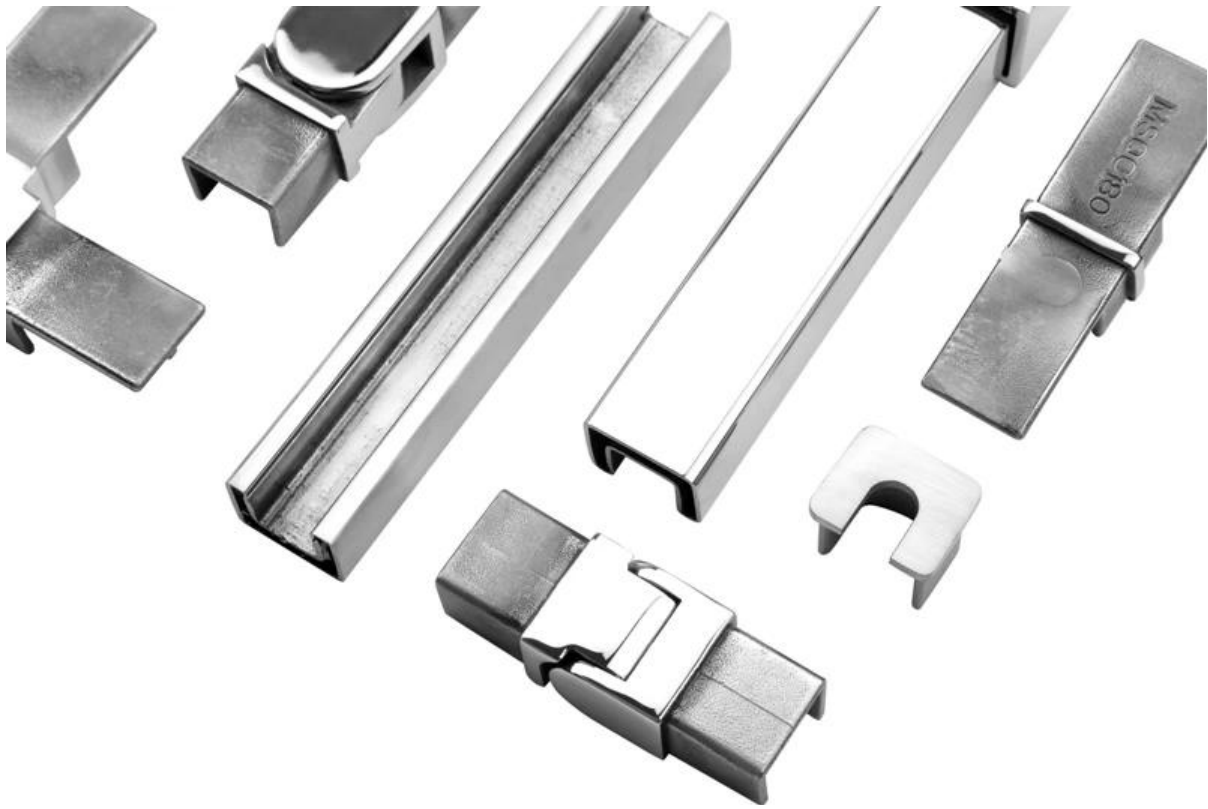


Big profile: for glass thickness 20-30mm



SLOT TUBE HANDLAUF:

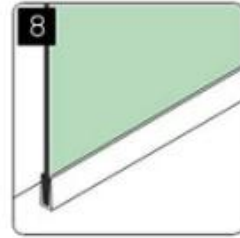
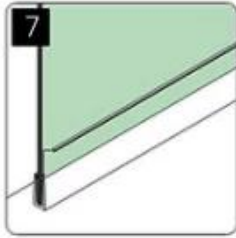
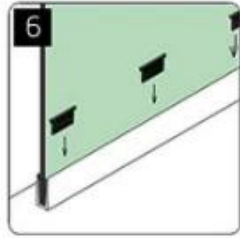
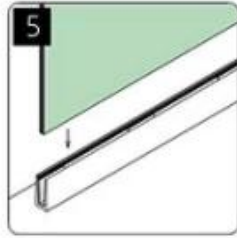
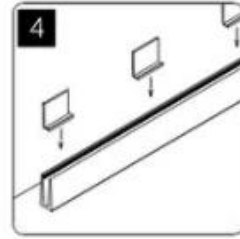
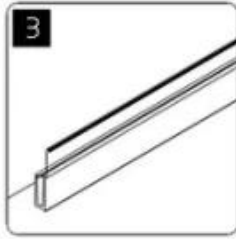
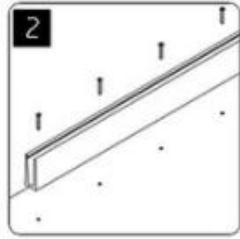
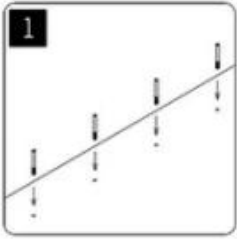




KEBIL 科比奥®



installation



Shenzhen Launch Co., Ltd was established in 2004, located at Nanshan District, Shenzhen, and one hour by car from Hongkong International Airport. Our main product is high-grade building materials includes stainless steel balustrade post, staircase handrail, balcony guardrail, swimming pool fence and other high-grade building materials. All the products are designed strictly according to the high-end market requirements. We have our own factory in Tangxia Town, Dongguan, has a variety of precision equipment more than 50 sets: CNC lathe, milling machine, punching machine, pipe cutter, argon welder, drilling machine, polisher, etc. which can provide customers with complete product processing services. With the German SPECTRO Spectrometer, we insist on testing every batch of materials to ensure that the material is highly qualified. We also have hardness gauge, secondary element and other test equipment to ensure the products meets customers' requirements.

ABOUT US



OUR ADVANTAGE

Please do not hesitate to contact us if you have any requirement regarding our production lines, you can expect a timely reply with professional solutions!



Own factory, shortest lead time.



Can help customers design product drawings based on customer ideas and design engineering installation drawing according to the customer site sketch.



Sample order, trial order acceptable.



Provide material test report to ensure that the material is qualified.



13 years of industry experience, we can help customers recommend the best solution to help customers save cost.

OUR FACTORY

More than 13 years experience in hardware industry design and processing, we can provide customized services from design to the sample and small batch trial production.



OUR CERTIFICATE

With premium quality, competitive price and superior service, we won a lot of customers' favor.
Our products are popular in North America, European and Australia.



PRODUCTION PROCESS



Casting



CNC lathe



CNC Milling



Stamping



Drilling & Tapping

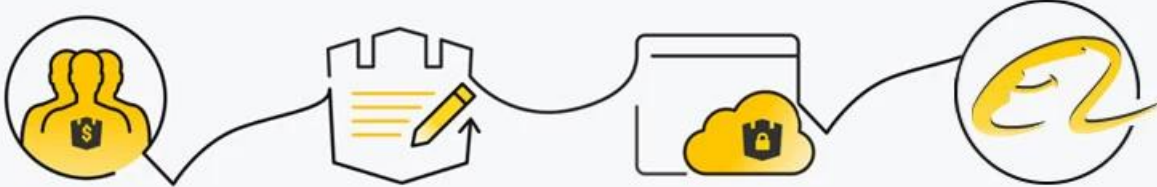


Polishing



PAYMENT & TRANSPORTATION

Welcome Alibaba Trade Assurance Order!



1 Start an order

2 Negotiate terms with our sales service & confirm order

3 Make payment

4 Alibaba provide full assurance



FAQ

1. Sind Sie Fabrik?

Ja, wir sind Fabrik.

2. Bieten Sie kostenlose Proben an?

Ja, wir bieten kostenlose Proben, aber Kunden müssen Expressgebühren bezahlen.

3. Welche Materialien haben Sie?

Wir haben das Material aus Edelstahl 304, 316, 316L und Duplex 2205.

4. Was ist Ihr MOQ?

MOQ der Bestellung erforderlich ist 1 pc.

5. Welche Art von Zahlung akzeptieren Sie?

Wir akzeptieren die Zahlung von T / T, LC, PayPal, West Union, etc.

6. Was ist Ihre Zahlungsbedingung?

Unsere Zahlungsbedingung ist T / T (100% oder 30/70) oder LC am Anblick.

7. Was ist Ihre Lieferzeit?

Unsere lieferzeit ist von 5 tage bis 30 tage basis auf ihre menge.

8. bieten sie OEM & ODM-Dienst?

Ja wir bieten OEM & ODM service.

9. Bieten Sie After-Sales-Service an?

Ja, wir bieten after-sales-service. Reklamationen für Bestellungen werden rechtzeitig innerhalb von 12 Stunden bearbeitet.

Kontaktieren Sie uns jetzt für weitere Informationen:

Vorabend

E-Mail: sales03@launch-china.cn

Handy / WhatsApp: +8615907334556