

Edelstahl Schwarz Matt Quadrat Glas Pool Zaun Spigot SBM

Edelstahl-Klemmglass-Zaunzapfen

1. Klasse: SUS316, SUS316L, DUPLEX2205
2. Glasstärke: 10mm - 13.52mm
3. Finish: Satin gebürstet oder spiegelpoliert
4. Zertifizierung: ISO9001, CCC

Material: rostfreier Stahl

Modellnummer: SBM

Art: Quadrat

Montiert: Bodenbelag

Anwendung: Rahmenloses Fechten & Balustrade

Produkte anzeigen:

Elektroplattierung in Black Matt:





Poliert in Goldfarbe:



Satin gebürstet:



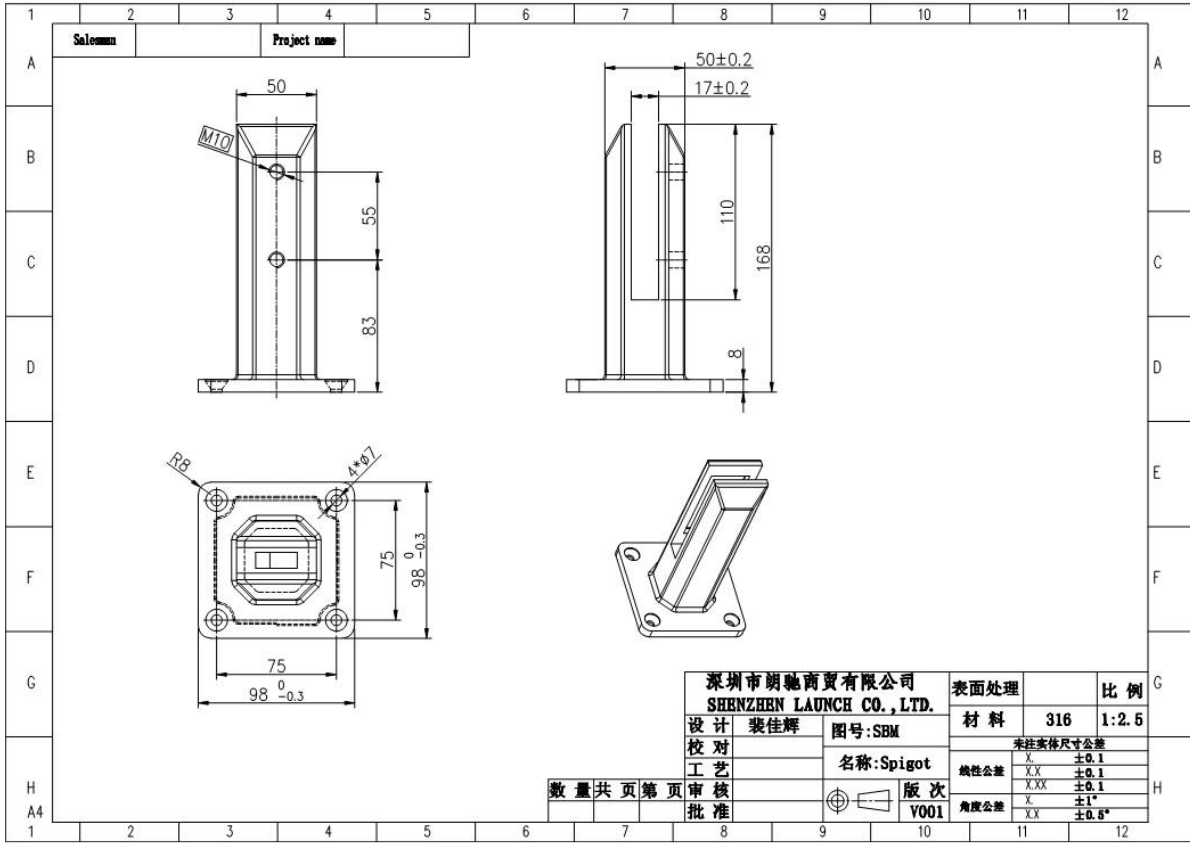
Spiegel poliert:



In Balck poliert - Modell RCM:



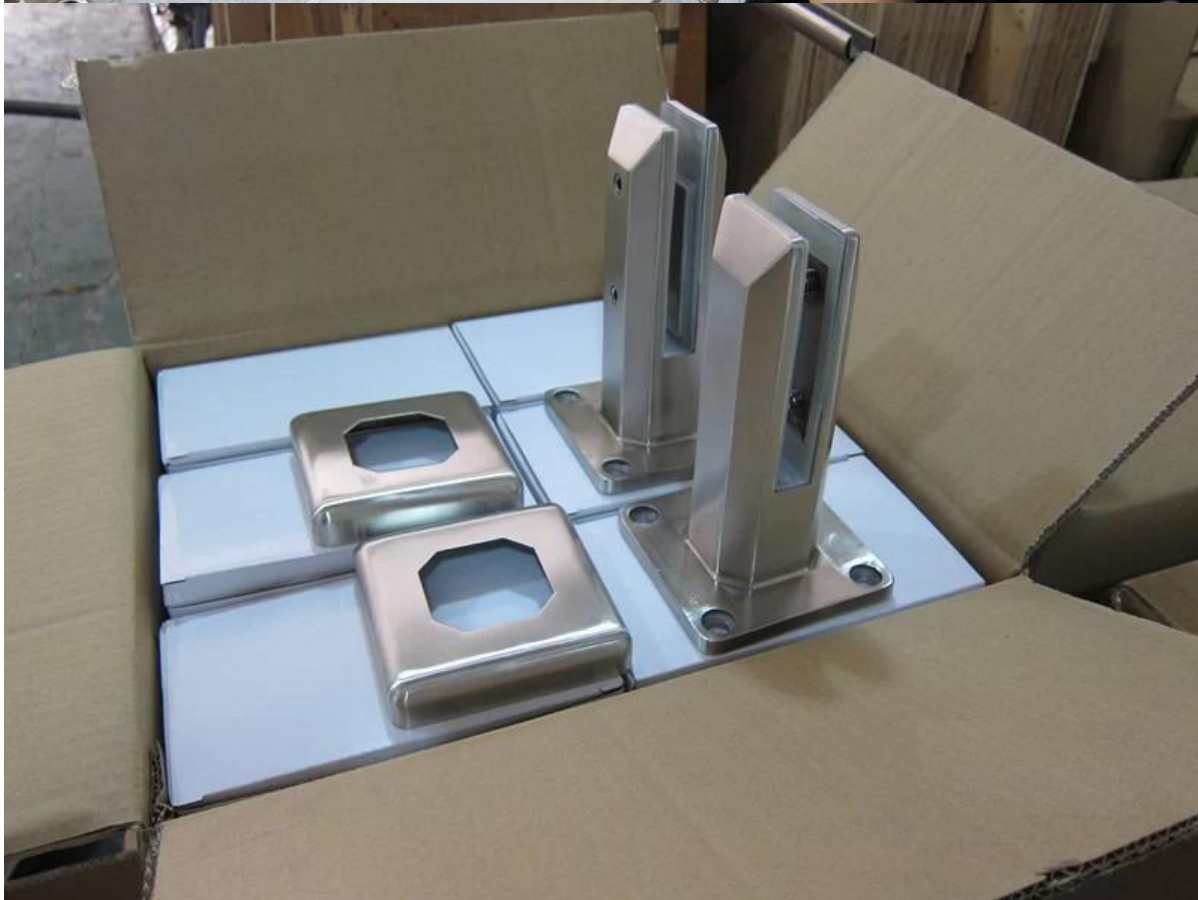
Zeichnung:



深圳市朗驰商贸有限公司 SHENZHEN LAUNCH CO., LTD.		表面处理	比例	
设计 裴佳辉	图号: SBM	材料 316	1:2.5	
校对	名称: Spigot	未注实际尺寸公差		
工艺		X	±0.1	
数量共页第页 审核 批准	版次 V001	线性公差	X.X	±0.1
		角度公差	X	±1°
			XX	±0.5°

Verpackung:





Projektfotos:
SBM in Spiegelausführung:



SBM in Satin-Finish:





Shenzhen Launch Co., Ltd ist eine professionelle Herstellung mit Design, Produktion und Vertrieb von Edelstahl-Hardware, Glasgeländer Armaturen, Handläufe Zubehör und andere Produkte.

WARUM UNS WÄHLEN

Konkurrenzfähiger preis: China festland herstellung

Gute Qualität: 14 Jahre Erfahrung technisch

Exzellenter Service: 14 Jahre Exporterfahrung auf der ganzen Welt

Verschiedene Designs sind nach Kundenwunsch verfügbar

Shenzhen Launch Co., Ltd was established in 2004, located at Nanshan District, Shenzhen, and one hour by car from Hongkong International Airport. Our main product is high-grade building materials includes stainless steel balustrade post, staircase handrail, balcony guardrail, swimming pool fence and other high-grade building materials. All the products are designed strictly according to the high-end market requirements. We have our own factory in Tangxia Town, Dongguan, has a variety of precision equipment more than 50 sets: CNC lathe, milling machine, punching machine, pipe cutter, argon welder, drilling machine, polisher, etc. which can provide customers with complete product processing services. With the German SPECTRO Spectrometer, we insist on testing every batch of materials to ensure that the material is highly qualified. We also have hardness gauge, secondary element and other test equipment to ensure the products meets customers' requirements.

ABOUT US



OUR ADVANTAGE

Please do not hesitate to contact us if you have any requirement regarding our production lines, you can expect a timely reply with professional solutions!



Own factory, shortest lead time.



Can help customers design product drawings based on customer ideas and design engineering installation drawing according to the customer site sketch.



Sample order, trial order acceptable.



Provide material test report to ensure that the material is qualified.



13 years of industry experience, we can help customers recommend the best solution to help customers save cost.

OUR FACTORY

More than 13 years experience in hardware industry design and processing, we can provide customized services from design to the sample and small batch trial production.



OUR CERTIFICATE

With premium quality, competitive price and superior service, we won a lot of customers' favor.
Our products are popular in North America, European and Australia.



PRODUCTION PROCESS



Casting



CNC lathe



CNC Milling



Stamping



Drilling & Tapping

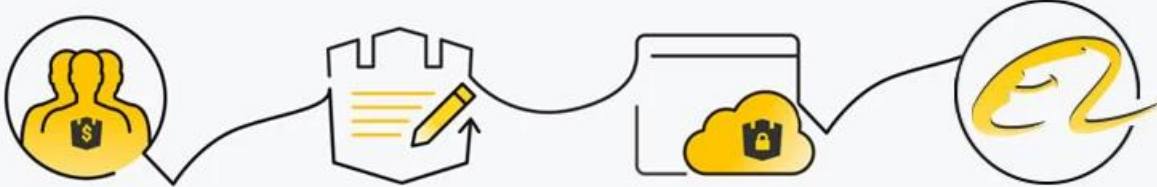


Polishing



PAYMENT & TRANSPORTATION

Welcome Alibaba Trade Assurance Order!



1 Start an order

2 Negotiate terms with our sales service & confirm order

3 Make payment

4 Alibaba provide full assurance



Verpackung & Lieferung

Verpackungsdetails :

1. Jeder Zapfen wird mit einer Plastikfolie und einem Airbag umwickelt und dann in einen Karton gegeben.
2. 100 Stützen sind in einer Box aus Sperrholz verpackt.
3. Kann auch als Kundenanforderungen verpackt werden.

Lieferdetails: 10-15 Werkzeuge nach Zahlung.

Kontaktieren Sie uns jetzt für weitere Informationen!

E-Mail: sales03@launch-china.cn

Mobil: +8615907334556

KEBIL 科比奥® SHENZHEN LAUNCH CO.LTD
LAUNCH INTERNATIONAL LIMITED

Eve Chow

Sales representative

M : +86 159 0733 4556

T : +86 755 8603 7559

E : sales03@launch-china.cn

A : B5-5003, Yilida Bldg, Nanshan District, Shenzhen