

Acero inoxidable de grado marino Duplex 2205 Montaje en base Espita de vidrio cuadrada Estándar australiano para cercas de vidrio sin marco.

Características -

- Modelo No. SBM
- Material: dúplex 2205, SS 316, SS316L, SS304
- Acabado: satinado, espejo, negro, dorado, blanco, etc.
- Altura 168 mm
- Cubierta de base, inserto de plástico, tornillos ajustables incluidos
- 1 unidad empaquetada en una caja blanca; 12 piezas en una caja de cartón

Galerías de fotos -



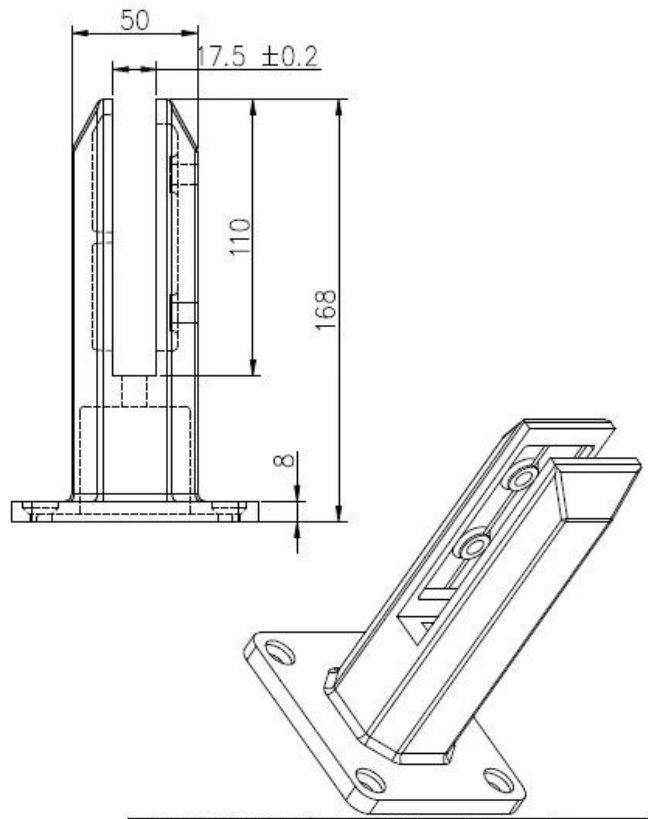
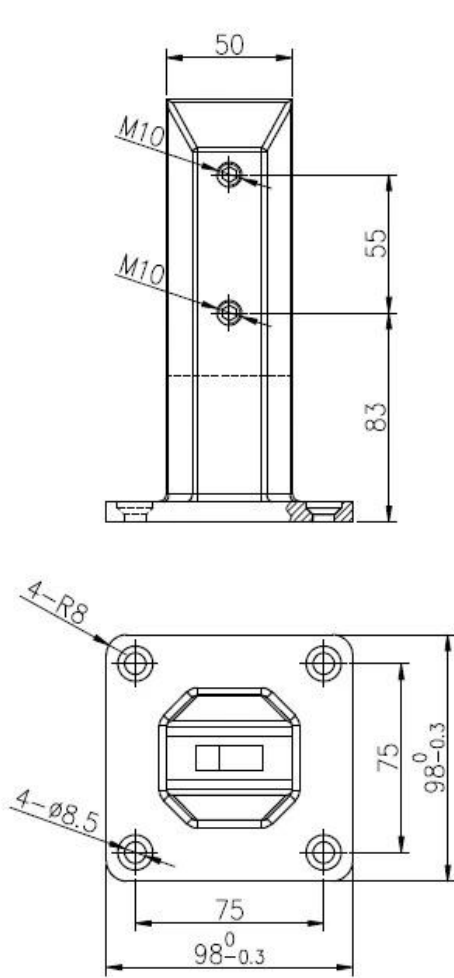
**KEBIL** 科比奥®







Dibujo-



深圳市朗馳商貿有限公司 <b>SHENZHEN LAUNCH CO., LTD.</b>		Surface treatment		Proportio
Design	Jacky	Material	2205	1:1
Check		No note of entity size tolerance		
Craft		Linear tolerance	X	±0.1
Audit		XXX		±0.1
		Angle	X	±1°

Informe de prueba de material Duplex 2205



12/16/2020 5:54:18 PM

Method: Fe-30  
 Comment: Cr-, Cr/Ni-steel  
 Type Standard 18--8

12/16/2020 5:54:09 PM

Type corr.concentr.

Sample Name:

Sample ID:

	C	Si	Mn	P	S	Cr	Mo	Ni
	%	%	%	%	%	%	%	%
< x > (1)	0.0224	0.8873	1.1010	0.0263	0.0032	21.6796	3.0718	5.5691

	Al	Co	Cu	Nb	Ti	V	W	Pb
	%	%	%	%	%	%	%	%
< x > (1)	< 0.0005	0.0797	0.1603	< 0.0002	0.0044	0.0893	0.0305	< 0.0002

	Sn	Sb	B	N	Fe			
	%	%	%	%	%			
< x > (1)	0.0092	< 0.0004	0.0024	0.1024	67.1600			

SBM de color negro vasografos

**Model : SBM**



MATT BLACK ELECTRO PLATING



MATT BLACK ELECTRO PLATING PROCESS



# LOADING TEST FOR SBM

## Introduction

MTS Metallurgical Testing Services was engaged to witness the installation of a sample pool fence spigot and to subsequently conduct load tests on the spigot to the requirements of Australian Standard AS1926.1 - 2012.

Standard/Specification AS 1926.1 - 2012, Section 3.2 and Appendix B

## Results Summary

(For details of individual tests, refer to the tables on the following pages.)

ID	Item/Heat No.	Dimensions/Type/Details	Finish	Overall Assessment
14117/01	SSRM316	70mm Square, Base Plate 316 Stainless steel	316l	COMPLIES

## Remarks

After completion of the testing, the spigot was found to be in sound condition with no breakage, tearing or signs of fracture and no looseness of the fixings.



Colin Cousins  
Metallurgical Testing Manager



Accreditation No: 15624  
Accredited for compliance  
with ISO/IEC 17025

## Strength Test

Test Specification AS 1926.1 - 2012, Appendix B Test Procedure MTS-TP3.1 Compression Tests - Products

Specimen ID	Observations	Assessment
14117/01	Test Equipment: Hydraulic ram and 10,000 N load cell Test Load: 330N Load Duration: 45 Secs Deflection under load: 1 mm Permanent Deflection after removal of test load: 0 mm	COMPLIES

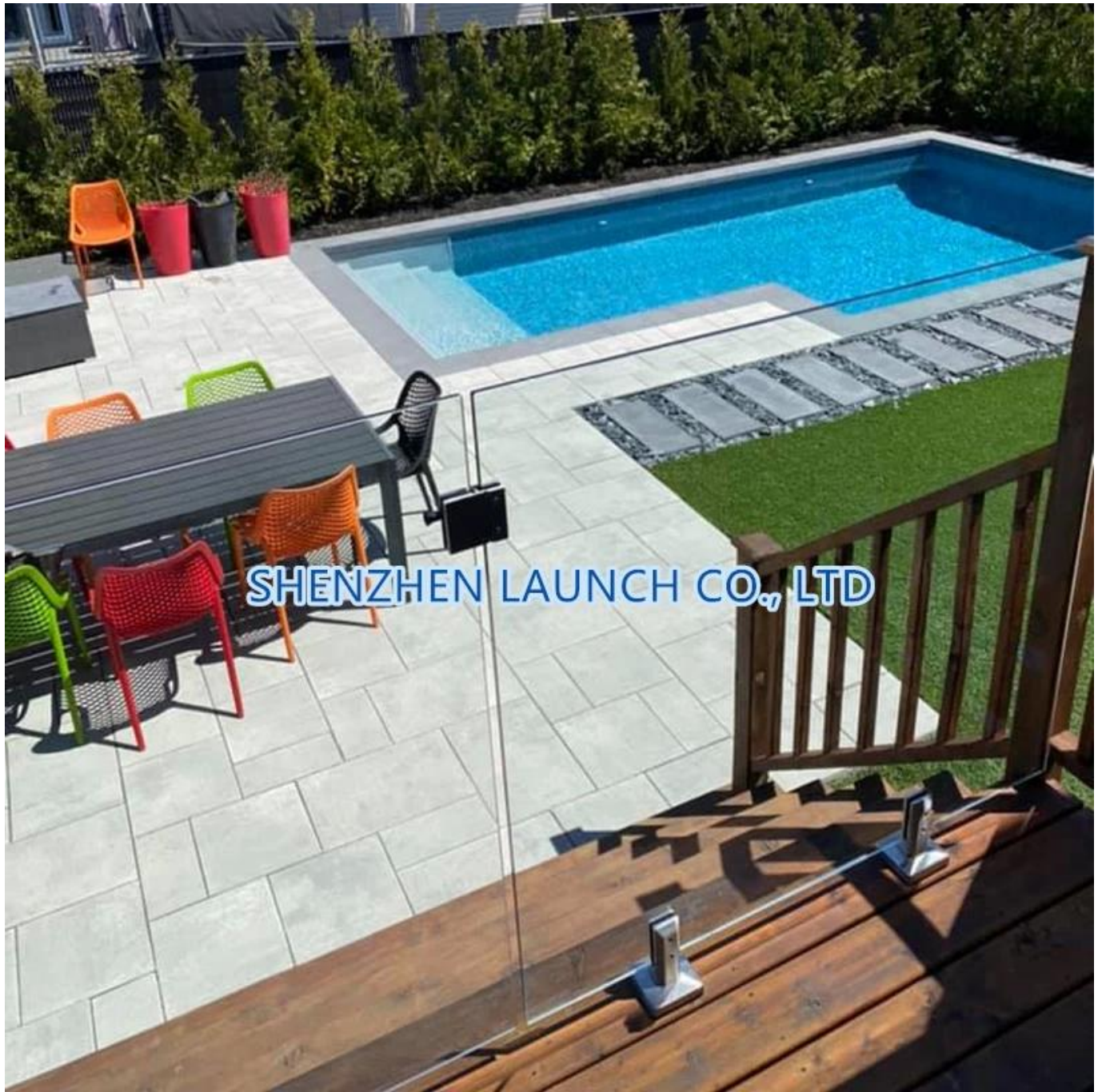
Requirements No permanent damage or loosening of fixings.

Galaros de proyectos para espita de vidrio cuadrada de montaje en base, SBM-









SHENZHEN LAUNCH CO., LTD





SHENZHEN LAUNCH CO., LTD

