

Espitas de balastradas de vidrio, espiga de valla de vidrio de acero inoxidable SBM

Espita de la valla de vidrio de la abrazadera del acero inoxidable

1. Grado: SUS316, SUS316L, DUPLEX2205
2. Espesor del vidrio: 10 mm - 13.52 mm
3. Acabado: satinado cepillado o espejo pulido
4. Certificación: ISO9001, CCC

Material: acero inoxidable

Número de modelo: SBM

Tipo: Cuadrado

Montado: Piso

Solicitud: Esgrima sin marcos & Balaustrada

Show de productos:

[Satinado-cepillado:](#)



[Espejo pulido:](#)



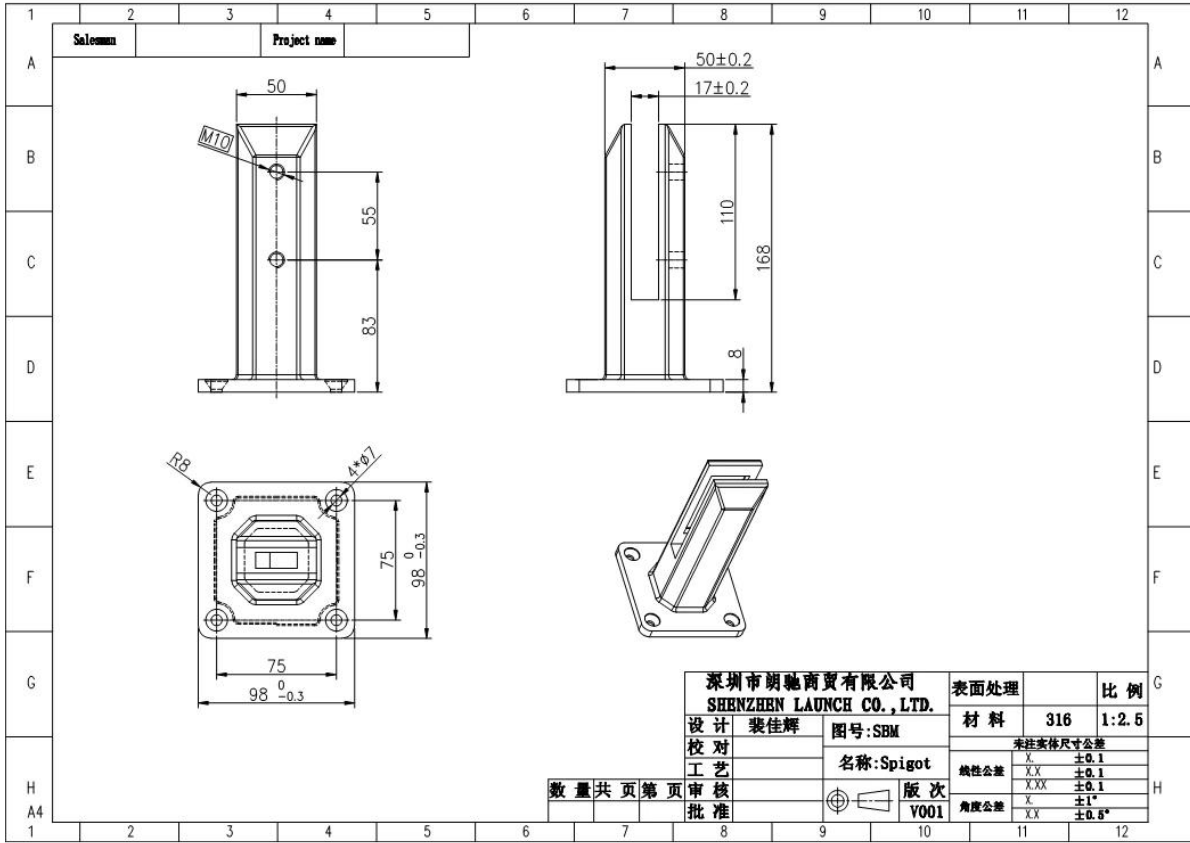
Pulido en color dorado:



Pulido en balck - modelo RCM:

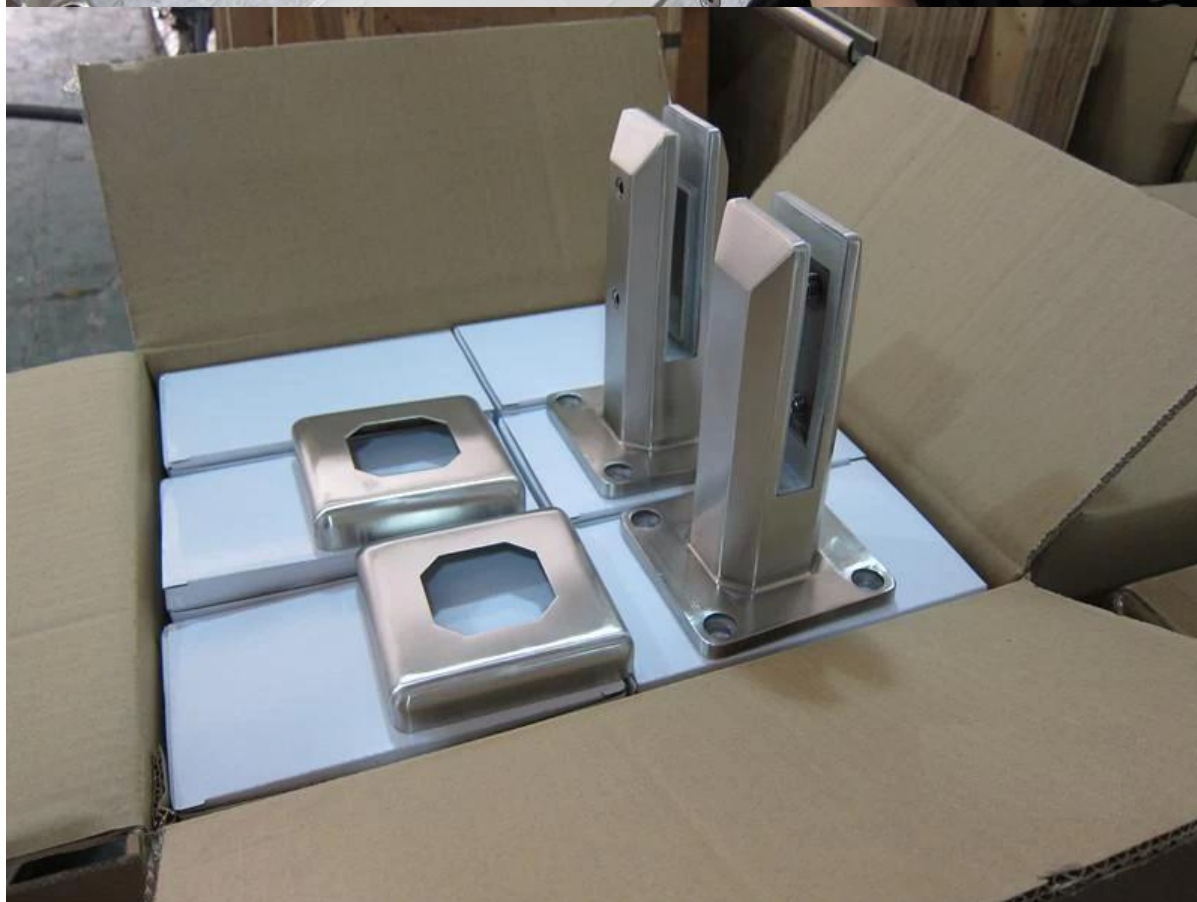


Dibujo:



Embalaje:





Fotos del proyecto:
SBM en acabado **Mirror**:



SBM en acabado satinado:





Shenzhen Launch Co., Ltd es una fabricación profesional con diseño, producción y venta de herrajes de acero inoxidable, herrajes de barandas de vidrio, accesorios de pasamanos y otros productos.

POR QUÉ ELEGIRNOS

Precio competitivo: fabricación de China continental

Buena calidad: 14 años de experiencia técnica

Excelente servicio: 14 años de experiencia de exportación en todo el mundo

Diferentes diseños están disponibles de acuerdo a las solicitudes del cliente

Shenzhen Launch Co., Ltd was established in 2004, located at Nanshan District, Shenzhen, and one hour by car from Hongkong International Airport. Our main product is high-grade building materials includes stainless steel balustrade post, staircase handrail, balcony guardrail, swimming pool fence and other high-grade building materials. All the products are designed strictly according to the high-end market requirements. We have our own factory in Tangxia Town, Dongguan, has a variety of precision equipment more than 50 sets: CNC lathe, milling machine, punching machine, pipe cutter, argon welder, drilling machine, polisher, etc. which can provide customers with complete product processing services. With the German SPECTRO Spectrometer, we insist on testing every batch of materials to ensure that the material is highly qualified. We also have hardness gauge, secondary element and other test equipment to ensure the products meets customers' requirements.

ABOUT US

Our Team



OUR ADVANTAGE

Please do not hesitate to contact us if you have any requirement regarding our production lines, you can expect a timely reply with professional solutions!



Own factory, shortest lead time.



Can help customers design product drawings based on customer ideas and design engineering installation drawing according to the customer site sketch.



Sample order, trial order acceptable.



Provide material test report to ensure that the material is qualified.



13 years of industry experience, we can help customers recommend the best solution to help customers save cost.

OUR FACTORY

More than 13 years experience in hardware industry design and processing, we can provide customized services from design to the sample and small batch trial production.



OUR CERTIFICATE

With premium quality, competitive price and superior service, we won a lot of customers' favor.
Our products are popular in North America, European and Australia.



PRODUCTION PROCESS



Casting



CNC lathe



CNC Milling



Stamping



Drilling & Tapping

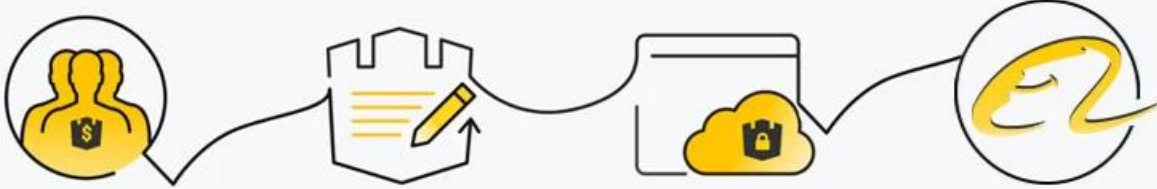


Polishing



PAYMENT & TRANSPORTATION

Welcome Alibaba Trade Assurance Order!



1 Start an order

2 Negotiate terms with our sales service & confirm order

3 Make payment

4 Alibaba provide full assurance



Embalaje y & Entrega

Detalles de empaque :

1. Cada espita se envuelve con una película de plástico y una bolsa de aire, y luego se coloca en una caja de cartón.
2. 100 espitas se embalan en una caja de madera contrachapada.
3. También se puede embalar como requisitos de los clientes.

Detalles de la entrega: 10-15 días laborables después del pago.

¡Contáctenos ahora para más información!

Correo electrónico: sales03@launch-china.cn

Móvil: +8615907334556

KEBIL 科比奥® SHENZHEN LAUNCH CO.LTD
LAUNCH INTERNATIONAL LIMITED

Eve Chow

Sales representative

M : +86 159 0733 4556

T : +86 755 8603 7559

E : sales03@launch-china.cn

A : B5-5003, Yilida Bldg, Nanshan District, Shenzhen