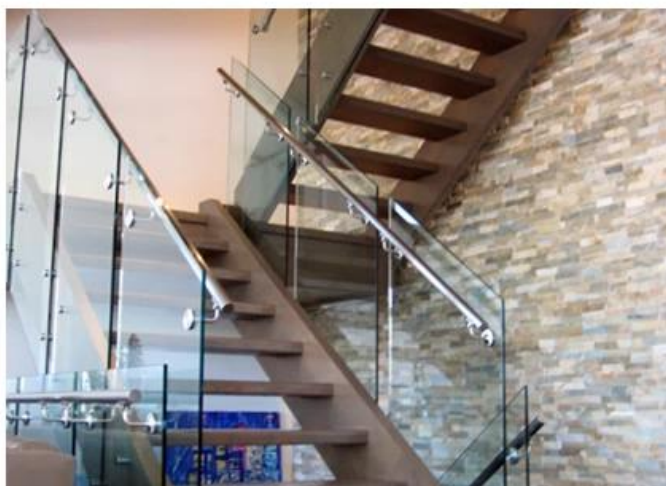
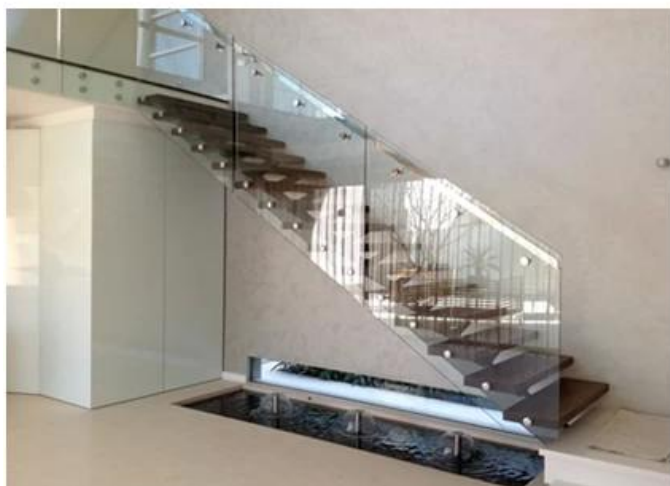
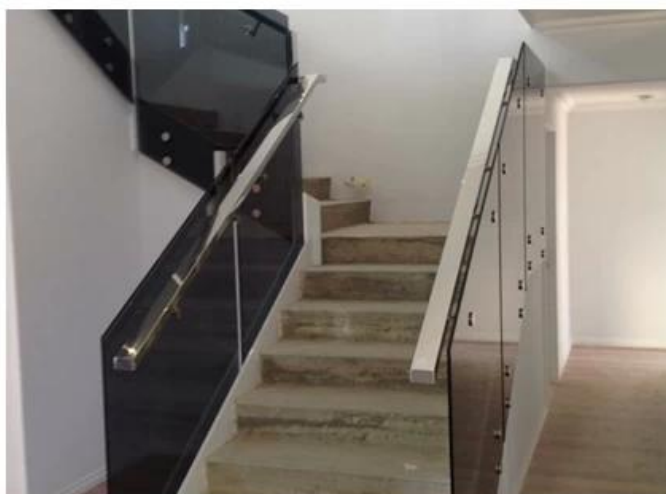
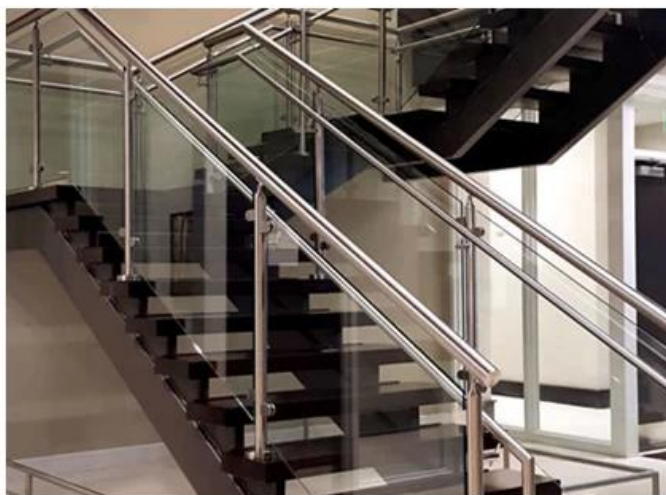


Nuestro gran venta vaso escalera barandilla diseños:



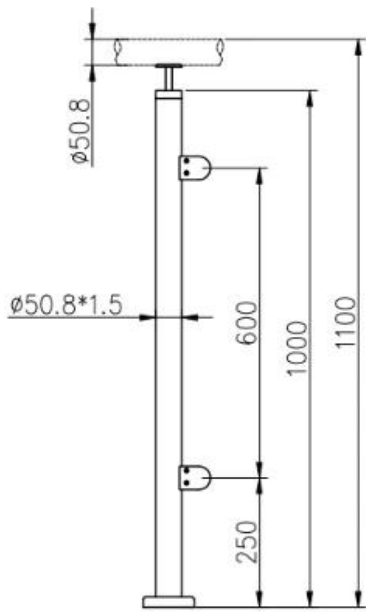
Kits modernos de barandilla de barandilla de escalera de vidrio interior

1	Material & Terminar	Acero inoxidable 304/316; Acabado satinado o espejo
2	Altura	1000mm / tamaño personalizado
3	Puesto de Stanchion	D50.8 * 1.5 (mm) tubo; Soporte de riel superior ajustable de 4 vías; Abrazadera de vidrio cuadrada o redonda.
4	Riel superior	D50.8 * 1.5 (mm) Tubo hueco
5	Barandilla de seguridad	Panel de vidrio transparente templado de 10 mm / 12 mm

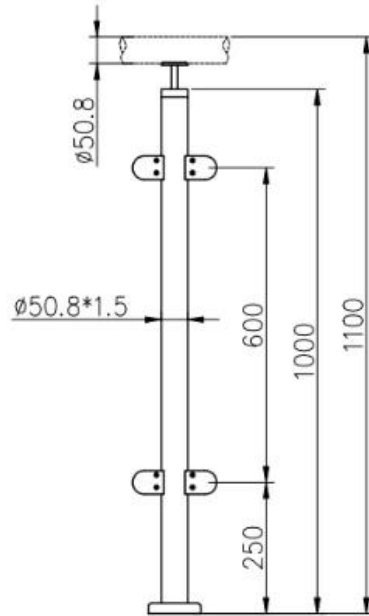
6 6	Uso y & Ubicación	Balaustre, balaustrada, barandilla, cerca, pasamanos, barandillas; Balcón, Puento, Cubierta, Jardín, Patio, Piscina, Porche, Escalera, Terraza
7 7	Instalación	Montaje superior / lateral
8	Paquete	EPE + caja interior + cartón
9 9	Servicio	1, se proporcionan accesorios y accesorios compatibles; 2, planificación de la construcción; 3, consejos de ingeniero profesional; 4, guía de instalación; 5, OEM, ODM, diseño del cliente;
10	Contacto	CORREO ELECTRÓNICO, SKYPE, WhatsApp, WeChat y QQ se muestran como marca de agua en las imágenes a continuación



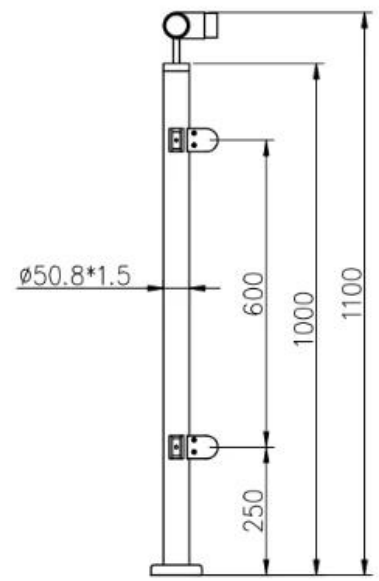
LCH-106



LCH-107



LCH-108



Instalación:

Glass Clamp Installation Guide



Mark and centre punch desired location of blind rivet nut location.



Drill centre punched hole in tube to suit blind rivet nut.



Insert blind rivet nut into tube and fasten with blind rivet tool.



Check installed blind rivet nut is secure and ready for install.



Align half glass clamp with blind rivet nut inline position. Screw in button head cap screw into thread and tighten with hex key.



Select appropriate rubber gasket to suit glass panel thickness. Install rubber gasket into both sides of glass clamp. (Note rubber gasket marked with sizes).



If heavier clamping load is required please use supplied glass clamp pin, during the install process. Note glass panels will require drilling in order to fit glass clamp pins.



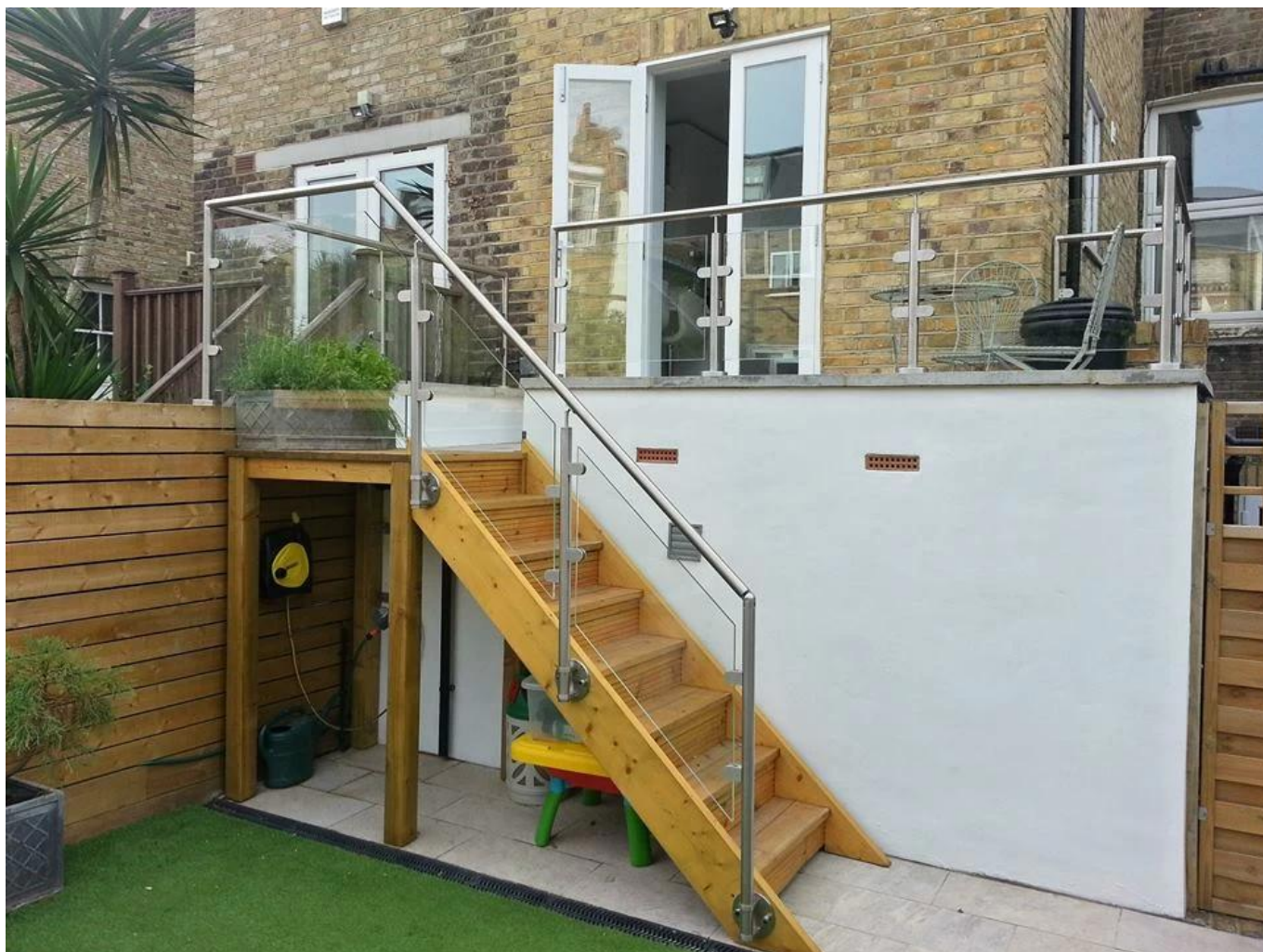
Fit glass panel into position, install second half of glass clamp secure with provided hex screws.



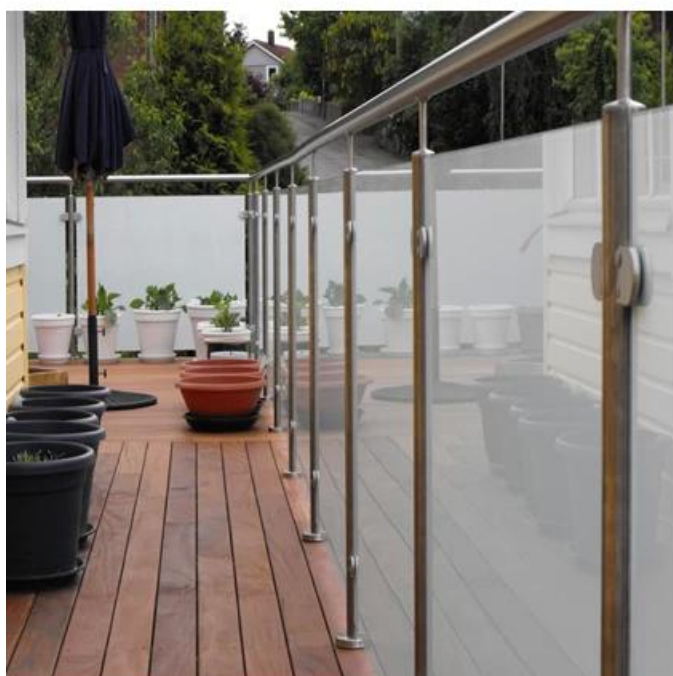
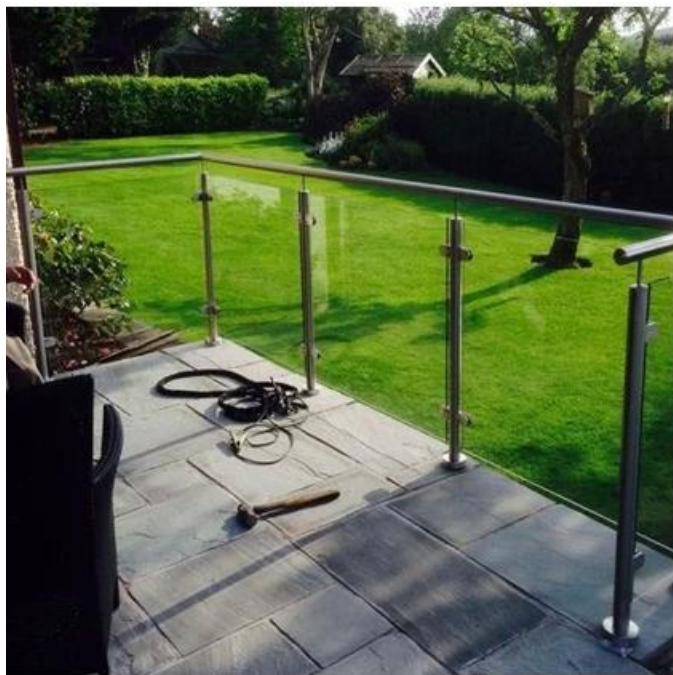
Tighten glass clamps with hex key, and check glass panel are secure with no movement.

Espectáculo del proyecto





por balcón barandilla diseños:



Sensación gratis a contacto nosotros:
Eva Chow
sales03@launch-china.cn
HP / WhatsApp: +8615907334556