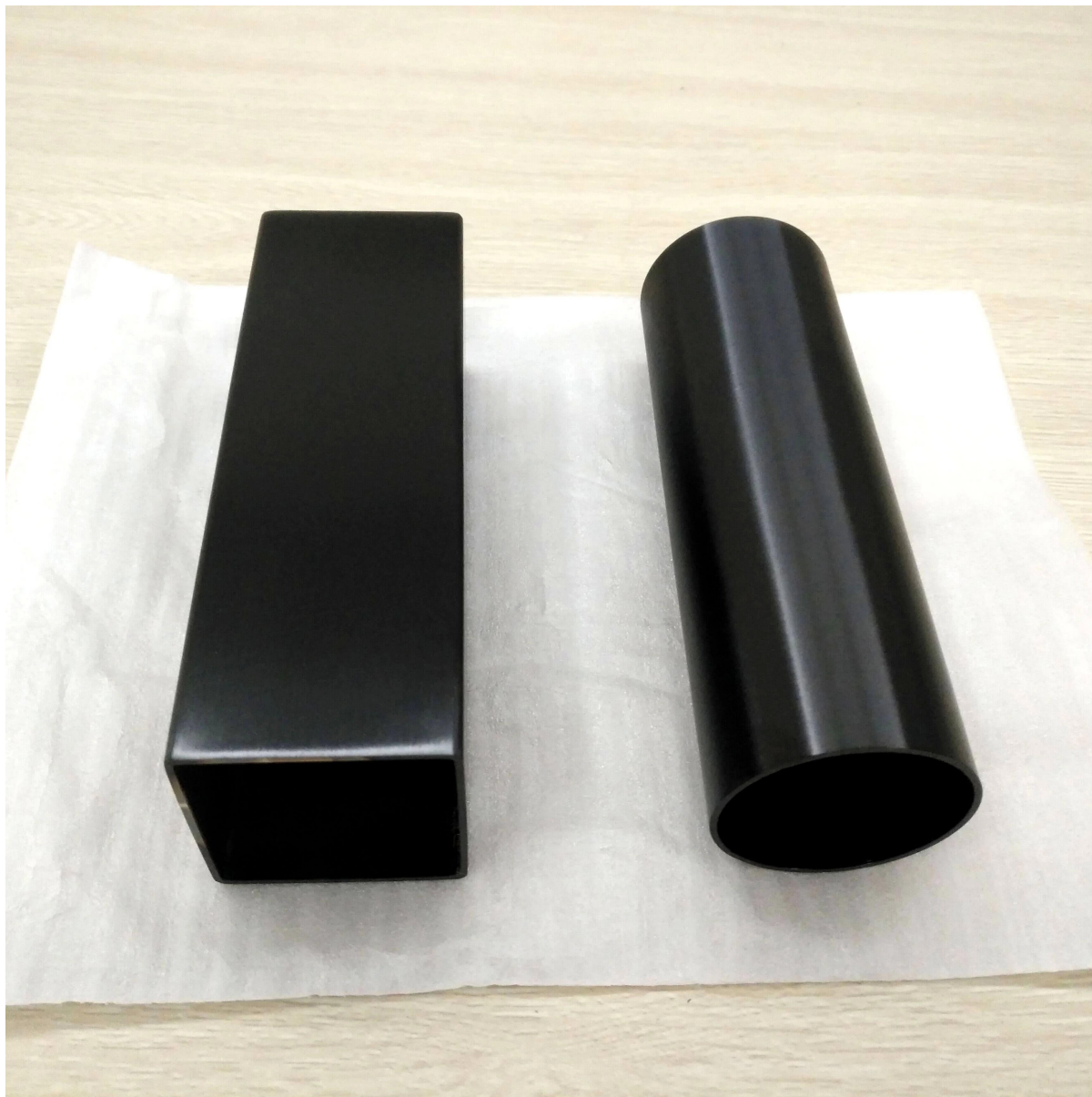
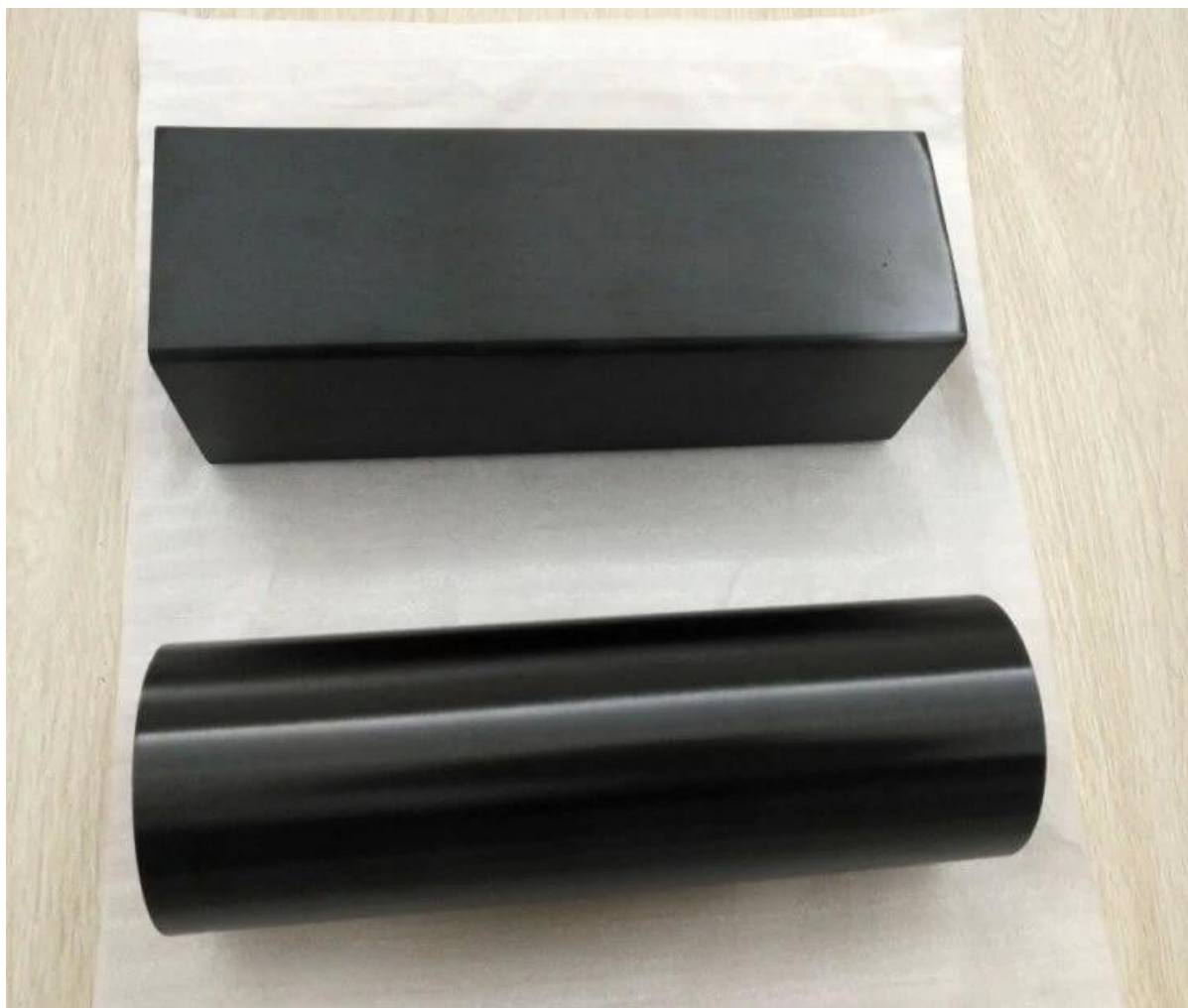


Tubo de barandilla de acero inoxidable mate en color negro mate





Varios tipos de tubo de acero inoxidable disponible:

STAINLESS STEEL HANDRAIL TUBE

Round tube	
Material	Stainless steel 304L /316L
Finish	Satin or mirror
Sizes	Ø 38.1 x 1.5 mm Ø 42.4 x 1.5 mm Ø 50.8 x 1.5 mm



Square tube	
Material	Stainless steel 304L /316L
Finish	Satin or mirror
Sizes	38 x 38 x 1.5 mm 40 x 40 x 1.5 mm 50 x 50 x 1.5 mm



Rectangular tube	
Material	Stainless steel 304L /316L
Finish	Satin or mirror
Sizes	50 x 10 x 1.5 mm 50 x 25 x 1.5 mm

STAINLESS STEEL SLOT HANDRAIL TUBE

Round slot tube	
Material	Stainless steel 304L /316L
Finish	Satin or mirror
Sizes	Ø 38 x 1.5 , 15x15mm single slot Ø 42x1.5 mm , 15x15mm / 24x24mm single slot Ø 50.8x1.5 mm , 15x15mm single slot



Square slot tube	
Material	Stainless steel 304L /316L
Finish	Satin or mirror
Sizes	- 31.8x31.8x1.5 , 15x15 mm single slot - 40x40x1.5 , 15x15 mm / 20x20mm single slot - 50x25x1.5 , 15x15mm single /double slot



2 Tubo doble ranura, 2 vías 180 grados:



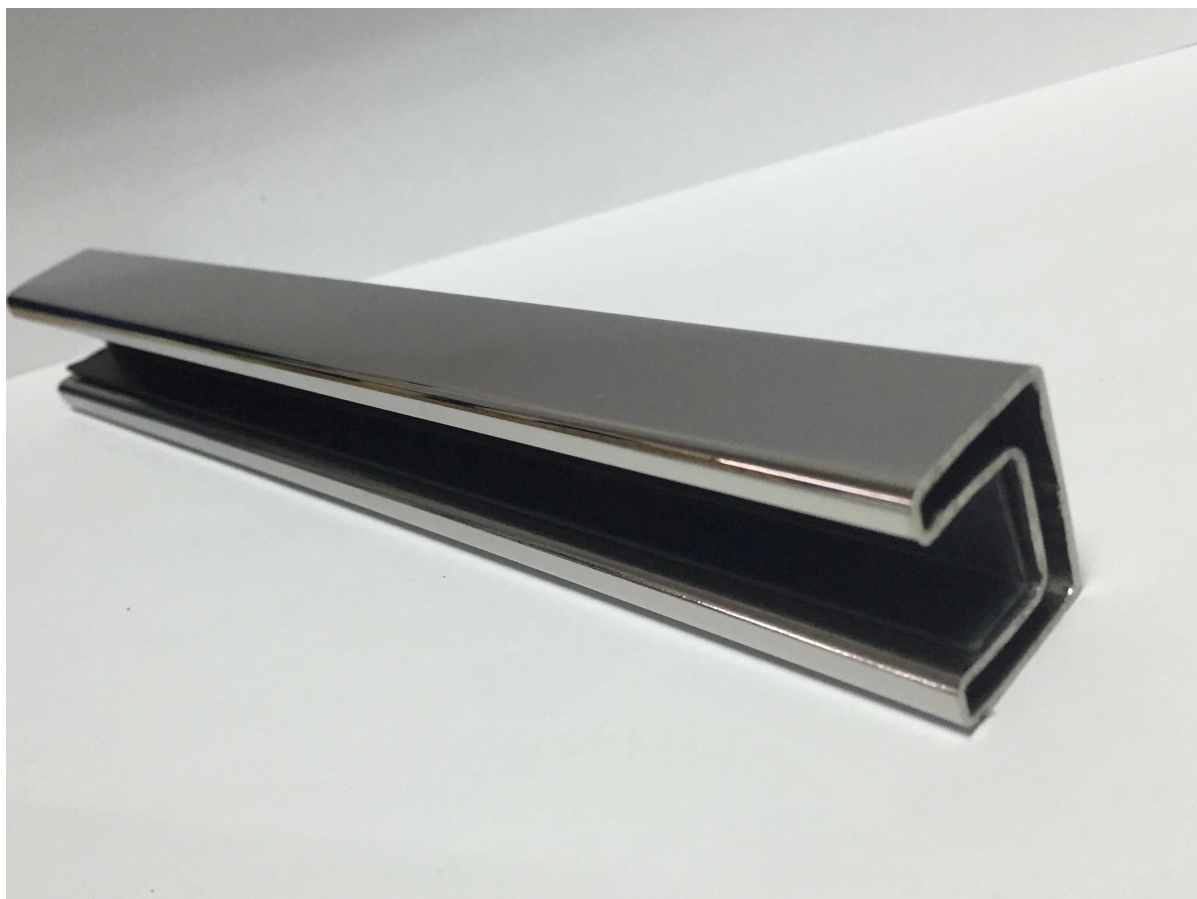
3 Tubo doble ranura, 2 vías 90 grados:



4. Tubo de ranura simple de 40 x 40 x 1.5 mm, 15 x 15 mm / 20 x 20 mm:



5. Tubo de ranura única 20 x 25 x 1.2 mm, 14 x 14 mm:

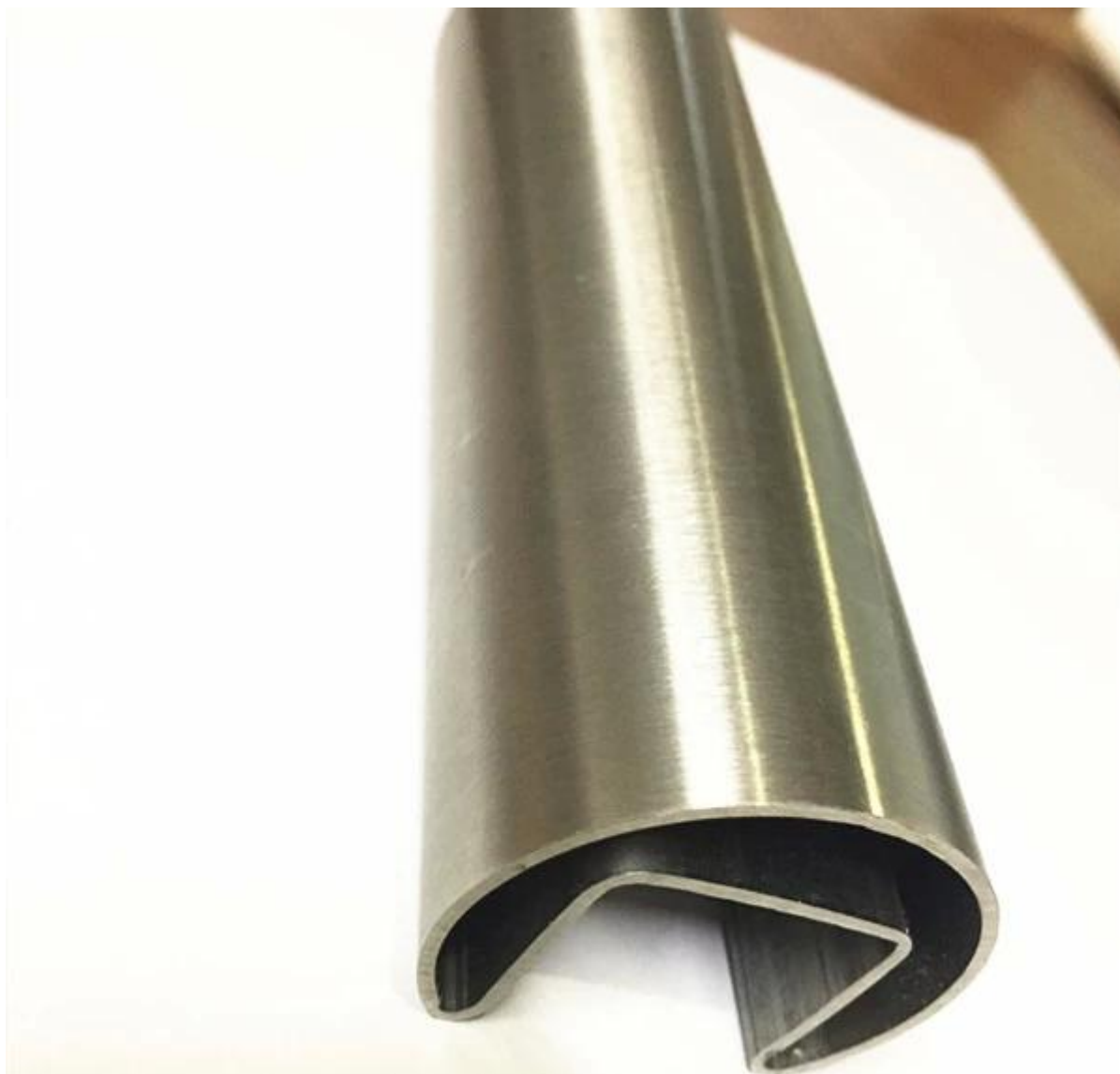


5. Diámetro 25,4 x 1,2 mm, tubo de ranura única de 14 x 14 mm:



6. Diámetro 31.8 x 1.5 mm, tubo de ranura única de 15 x 15 mm:





Gracias por su visita. Cualquier interesado, por favor póngase en contacto con nosotros libremente:

Skype: [lanzamiento-02](https://www.skype.com/name/lanzamiento-02) . Email: sales02@launch-china.cn .