

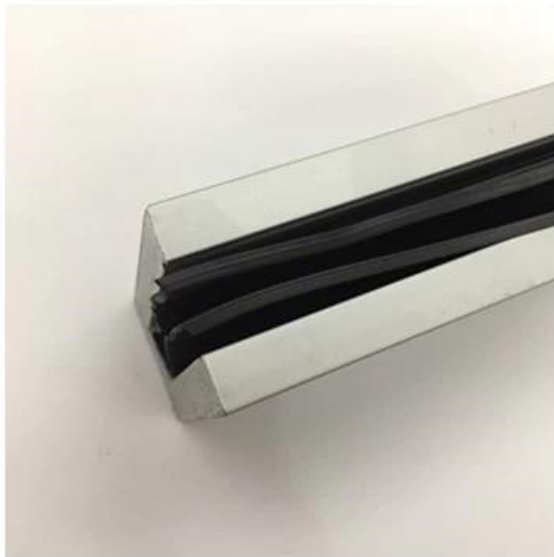
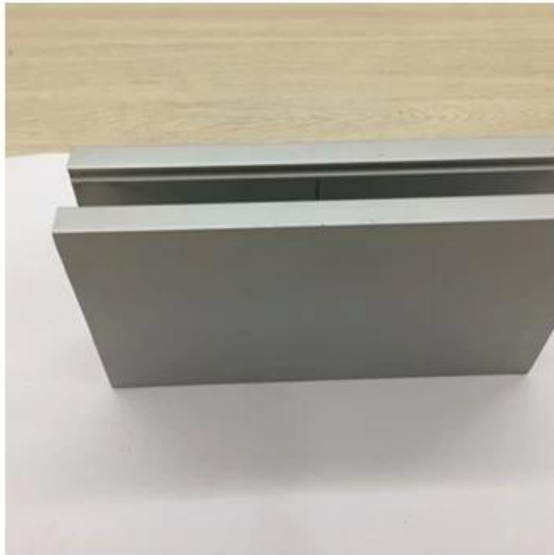
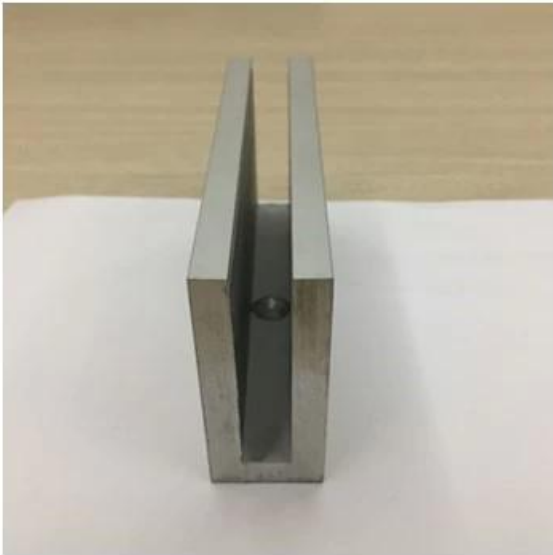
Alumiinista Decking Kaiteet / Lasi Kaiteet / U Channel Lasi Kaiteet Parvekkeelle

Alumiini U-kanavan profiilin tiedot:

erä	U-kanavainen lasikisko, alumiinikanava, u-kanava, lasikisko, alumiini-pohjainen kengän lasikuori
materiaali	Alumiini 6063 T3
Suorittaa loppuun	Anodisoidaan / jauhemaalattu
Koko	35 * 80mm / 63,5 * 104mm jne
Lasin paksuus	12mm - 25mm
Slot-putketyypit	Pyöreä tai neliö
Asennus	Itsekierteitys / räjähdyspultit / ruuvit
Asennus	Lattia- / seinäkiinnitys
hakemus	Parveke, terassi, kuisti, portaat, terassi, aula, mall
Toimitus	15-30 päivää

Sekä kaupalliseen että asumisohjelmaan

Sekä tukku-ja vähittäiskauppa (Olemme valmistaja)



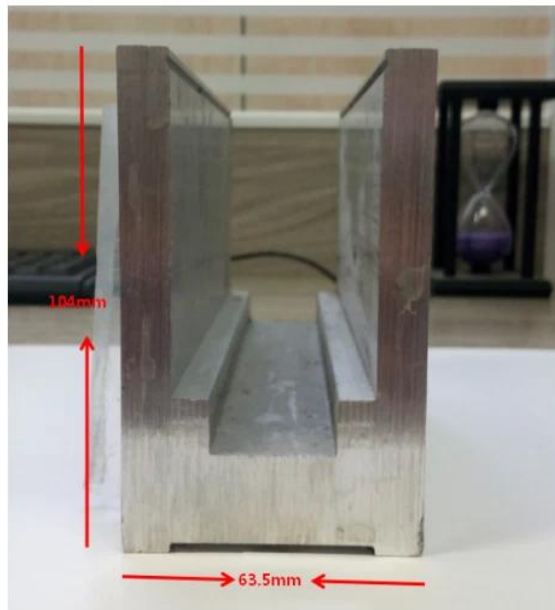
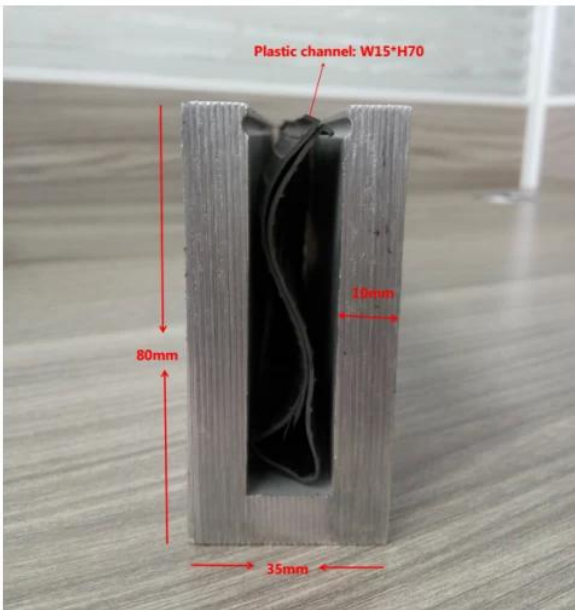




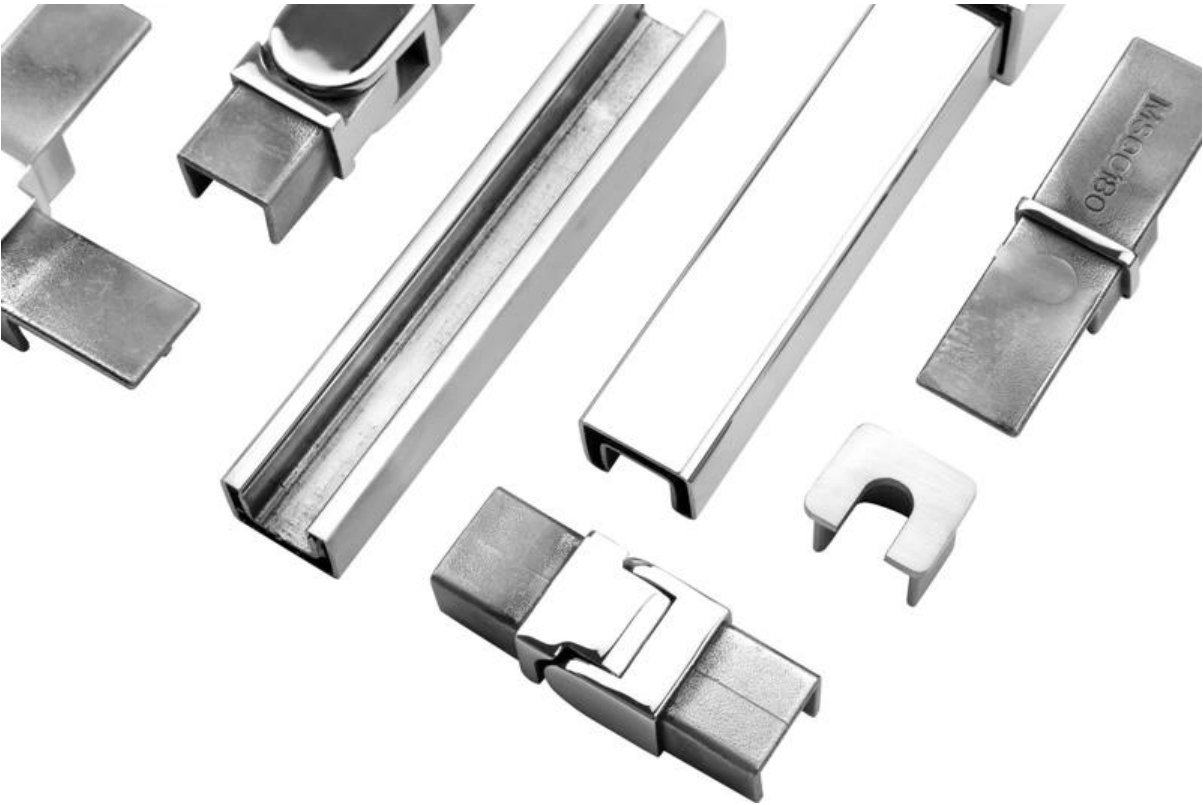
PIENI & SUURI TYYPPI ALUMINIUM U -KANAVA LASITAVAA:

Small profile: for glass thickness 10-12.76mm

Big profile: for glass thickness 20-30mm



SLOT TUBE HANDRAIL:





Shenzhen Launch Co., Ltd was established in 2004, located at Nanshan District, Shenzhen, and one hour by car from Hongkong International Airport. Our main product is high-grade building materials includes stainless steel balustrade post, staircase handrail, balcony guardrail, swimming pool fence and other high-grade building materials. All the products are designed strictly according to the high-end market requirements. We have our own factory in Tangxia Town, Dongguan, has a variety of precision equipment more than 50 sets: CNC lathe, milling machine, punching machine, pipe cutter, argon welder, drilling machine, polisher, etc. which can provide customers with complete product processing services. With the German SPECTRO Spectrometer, we insist on testing every batch of materials to ensure that the material is highly qualified. We also have hardness gauge, secondary element and other test equipment to ensure the products meets customers' requirements.

ABOUT US

Our Team



OUR ADVANTAGE

Please do not hesitate to contact us if you have any requirement regarding our production lines, you can expect a timely reply with professional solutions!



Own factory, shortest lead time.



Can help customers design product drawings based on customer ideas and design engineering installation drawing according to the customer site sketch.



Sample order, trial order acceptable.



Provide material test report to ensure that the material is qualified.



13 years of industry experience, we can help customers recommend the best solution to help customers save cost.

OUR FACTORY

More than 13 years experience in hardware industry design and processing, we can provide customized services from design to the sample and small batch trial production.



OUR CERTIFICATE

With premium quality, competitive price and superior service, we won a lot of customers' favor.
Our products are popular in North America, European and Australia.



PRODUCTION PROCESS



Casting



CNC lathe



CNC Milling



Stamping



Drilling & Tapping

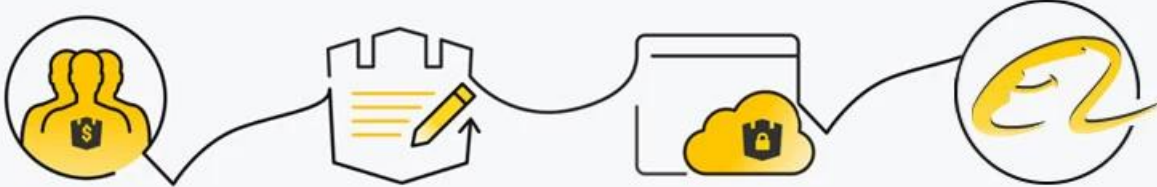


Polishing



PAYMENT & TRANSPORTATION

Welcome Alibaba Trade Assurance Order!



1 Start an order

2 Negotiate terms with our sales service & confirm order

3 Make payment

4 Alibaba provide full assurance



Ohje

1. Oletko tehdas?

Kyllä, olemme tehdas.

2. Tarjoatko ilmaisia näytteitä?

Kyllä, tarjoamme ilmaisia näytteitä, mutta asiakkaiden on maksettava maksut.

3. Mitä materiaaleja sinulla on?

Meillä on ruostumattoman teräksen 304, 316, 316L ja Duplex 2205 materiaali.

4. Mikä on MOQ?

Tilausmäärä MOQ on 1 kpl.

5. Minkälainen maksu hyväksyy?

Hyväksymme T / T, LC, PayPalin, West Unionin jne. Maksut.

6. Mikä on maksuehto?

Meidän maksuaika on T / T (100% tai 30/70) tai LC näkyvissä.

7. Mikä on toimitusaika?

Toimitusaika on 5 vuorokautta 30 vuorokauden määrään asti.

8. Tarjoatko OEM & ODM-palvelu?

Kyllä, tarjoamme OEM & ODM -palvelua.

9. Tarjoatko huoltopalvelua?

Kyllä, tarjoamme myynnin jälkeistä palvelua. Käsiteltäviä valituksia käsitellään ajoissa 12 tunnin kuluessa.

Ota yhteyttä nyt lisätietoja:

aatto

Sähköposti: sales03@launch-china.cn

Mobile / Whatsapp: +8615907334556