

balustrades en acier inoxydable top rails pour le verre 8-13.52mm

1. stainless balustrades en acier rails top description,

Matériel: acier inoxydable 304/316 / 316L

Terminer: Brossé ou poli miroir

Pour une épaisseur de verre : épaisseur 8-13.52mm

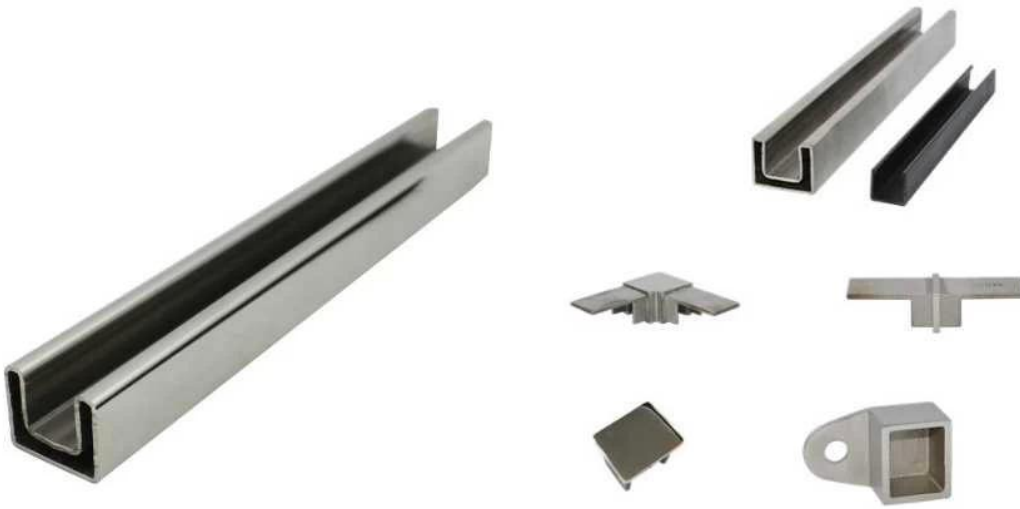
Dimension: Forme carrée, 25 * 20mm, rainure 14 * 14mm,

5,8 mètre par longueur, ou selon votre coupe de l'exigence en sections



2. balustrades en acier inoxydable top rails et accessoires de détails:

Slot handrail and fittings



Square slot handrail series

balustrades en acier inoxydable rails top raccords photos

90 degree Corner connector



180 degree middle connector



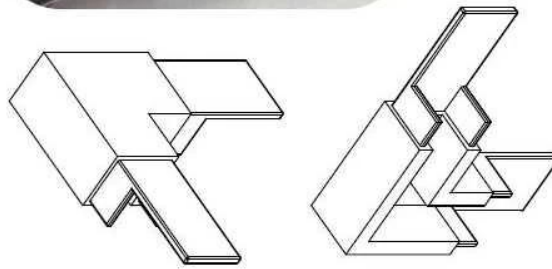
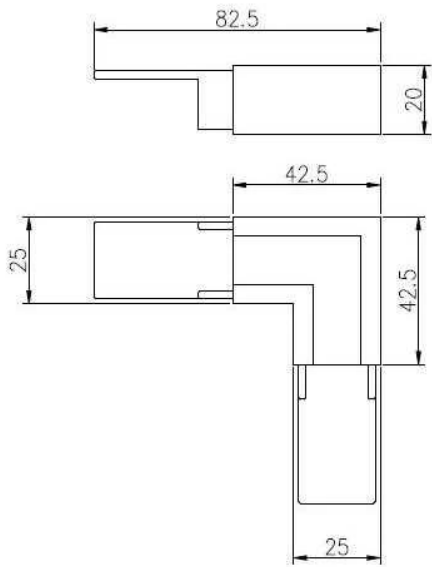
End Cap



Wall Bracket

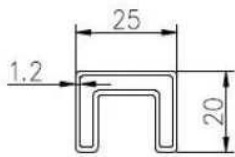


90 degree connector drawings

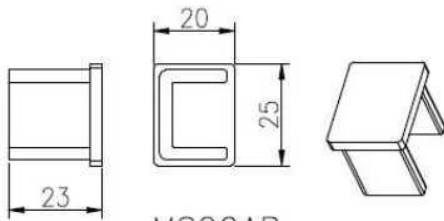
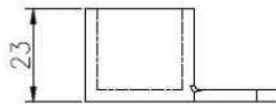


MSQC90

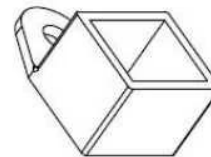
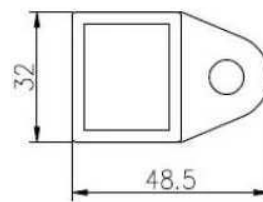
Slot tube handrail + end cap + wall bracket connector drawings



25*20 tube



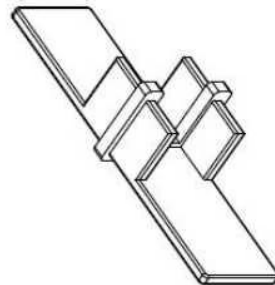
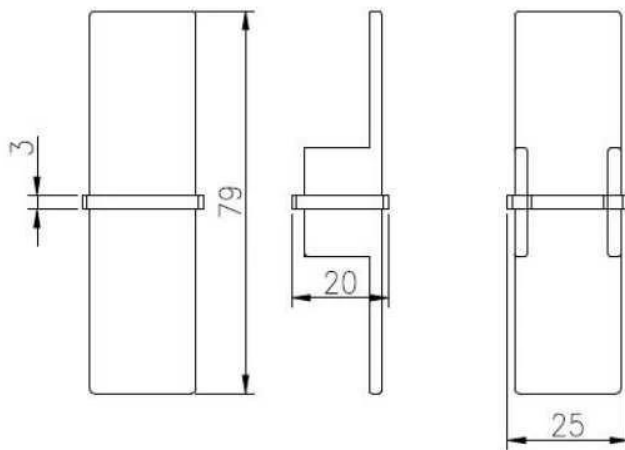
MSQCAP



MSQCW



180 degree connector drawings



MSQC180

3. balustrades en acier inoxydable top rails projet:







4. Round 25.4mm de diamètre de forme balustrades en acier inoxydable top rails,



KEBIL 科比奥™

ISO
9001:2008
REGISTERED

Factory Audit



mini top rail



square top raip fittings



www.launch-china.cn

Merci pour votre visite, Tous les intéressés ou les besoins, s'il vous plaît contactez-moi librement:

Joey Lan

Shenzhen Lancement Co., Ltd

www.launch-china.com www.launch-china.en.alibaba.com www.chinabalustrade.com

Email: sales02@launch-china.cn.

Skype: [lancement-02](https://www.skype.com/people/lancement-02). Bureau: 86-755-86037559.