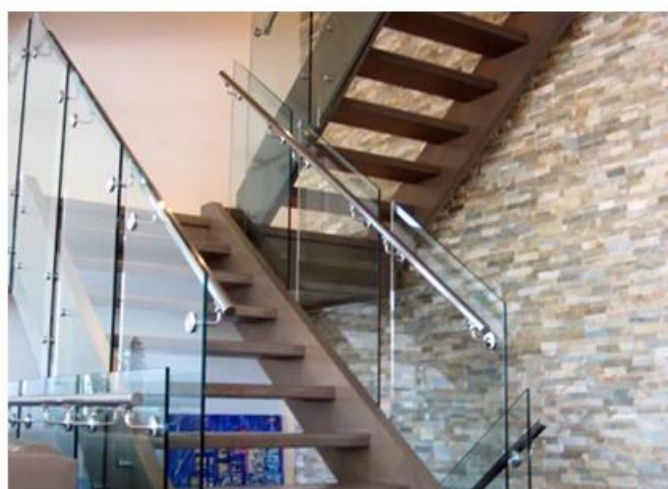
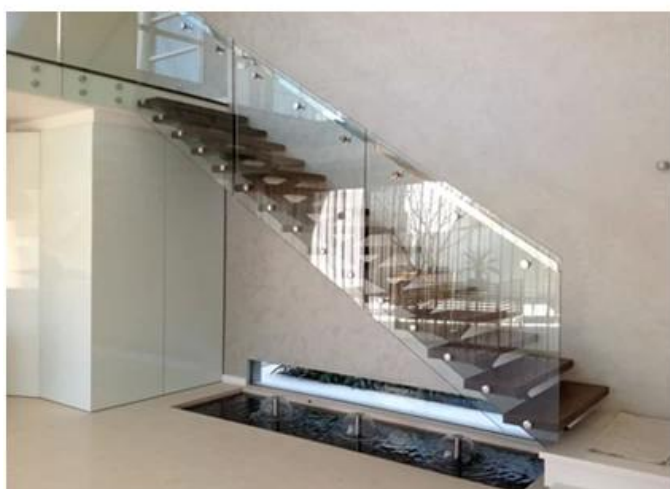
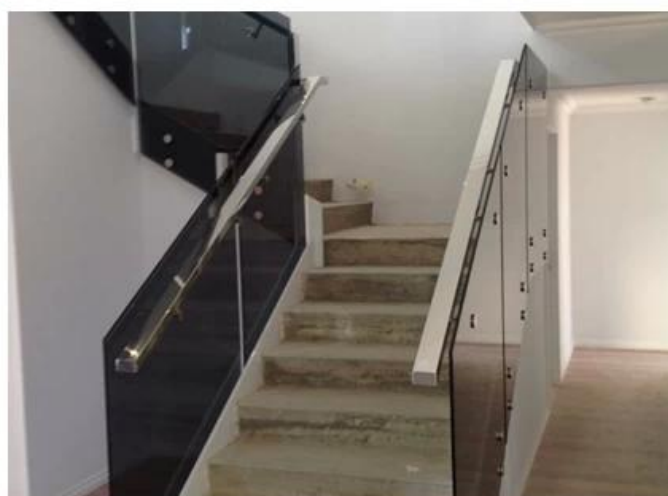
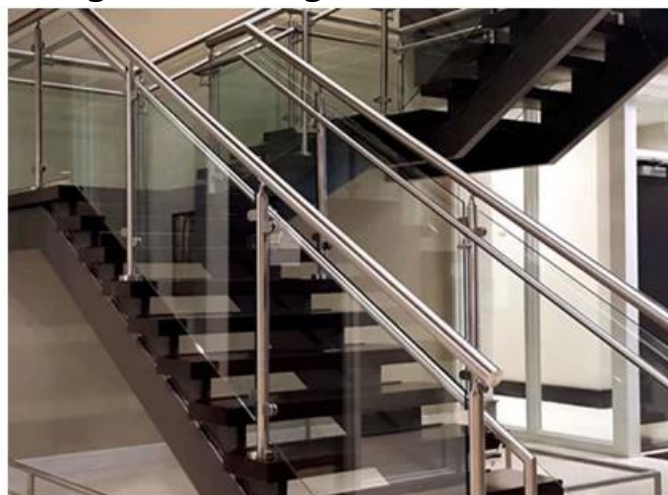


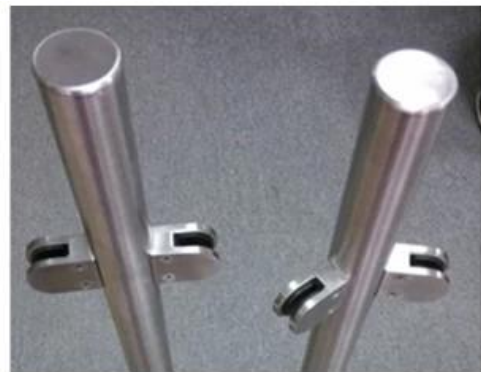
## Nostro caldo-vendita bicchiere scala ringhiera disegni:



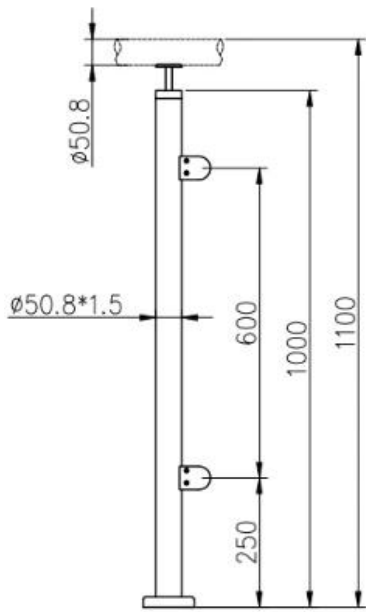
### Corredi moderni della ringhiera della ringhiera della scala di vetro dell'interno

1	Materiale e & finire	Acciaio inossidabile 304/316; Finitura satinata o a specchio
2	Altezza	1000 MM / Dimensioni personalizzate
3	Stanchion Post	D50,8 * 1,5 (mm) tubo; Staffa per binario superiore regolabile a 4 vie; Morsetto di vetro quadrato o rotondo.
4	Top Rail	D50.8 * 1.5 (mm) Tubo vuoto
5	Ringhiera di sicurezza	Pannello in vetro trasparente temperato 10mm / 12mm

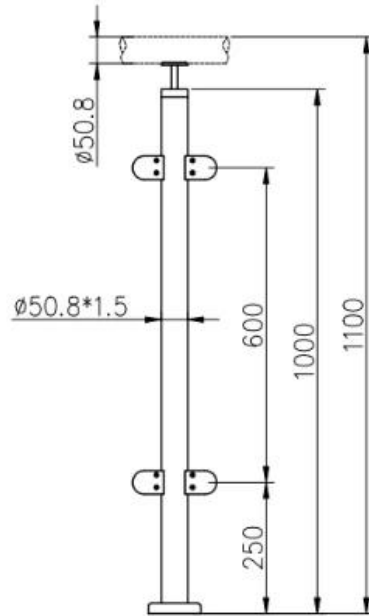
6	Utilizzo & Posizione	Balaustra, balaustina, ringhiera, recinzione, corrimano, ringhiere; Balcone, Ponte, Ponte, Giardino, Patio, Piscina, Veranda, Scala, Terrazza
7	Installazione	Montaggio superiore / laterale
8	Pacchetto	EPE + scatola interna + cartone
9	Servizio	1, accessori e accessori accoppiabili sono forniti; 2, pianificazione della costruzione; 3, consigli dell'ingegnere professionista; 4, guida all'installazione; 5, OEM, ODM, progettazione del cliente;
10	Contatto	EMAIL, SKYPE, WhatsApp, WeChat e QQ sono mostrati come filigrana sulle immagini sottostanti



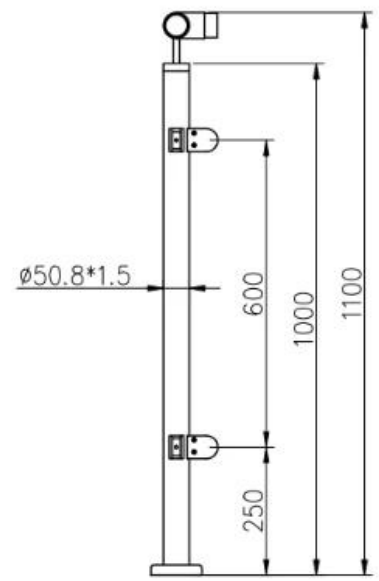
**LCH-106**



**LCH-107**



**LCH-108**



Installazione:

## Glass Clamp Installation Guide



Mark and centre punch desired location of blind rivet nut location.



Drill centre punched hole in tube to suit blind rivet nut.



Insert blind rivet nut into tube and fasten with blind rivet tool.



Check installed blind rivet nut is secure and ready for install.



Align half glass clamp with blind rivet nut inline position. Screw in button head cap screw into thread and tighten with hex key.



Select appropriate rubber gasket to suit glass panel thickness. Install rubber gasket into both sides of glass clamp. (Note rubber gasket marked with sizes).



If heavier clamping load is required please use supplied glass clamp pin, during the install process. Note glass panels will require drilling in order to fit glass clamp pins.



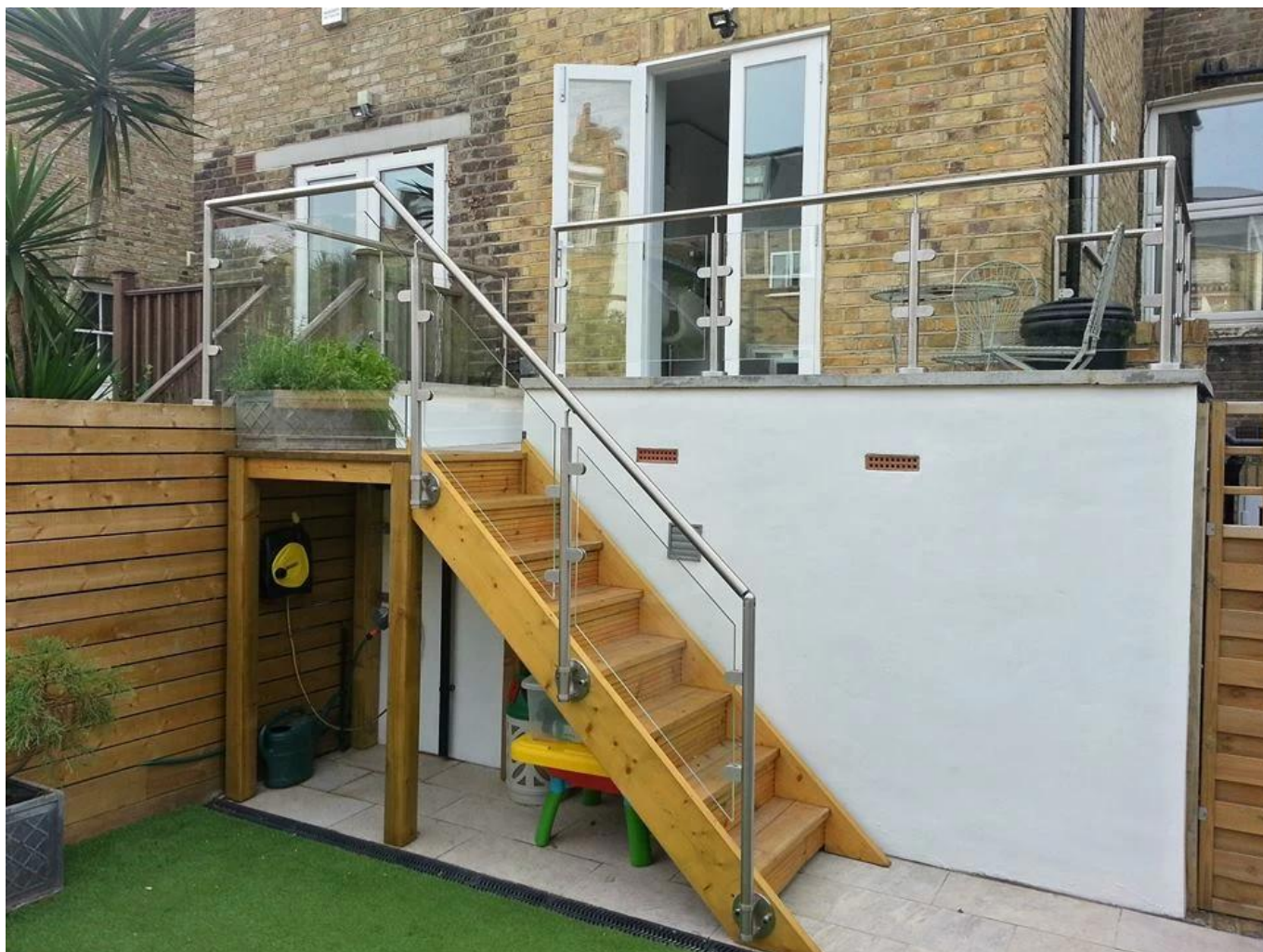
Fit glass panel into position, install second half of glass clamp secure with provided hex screws.



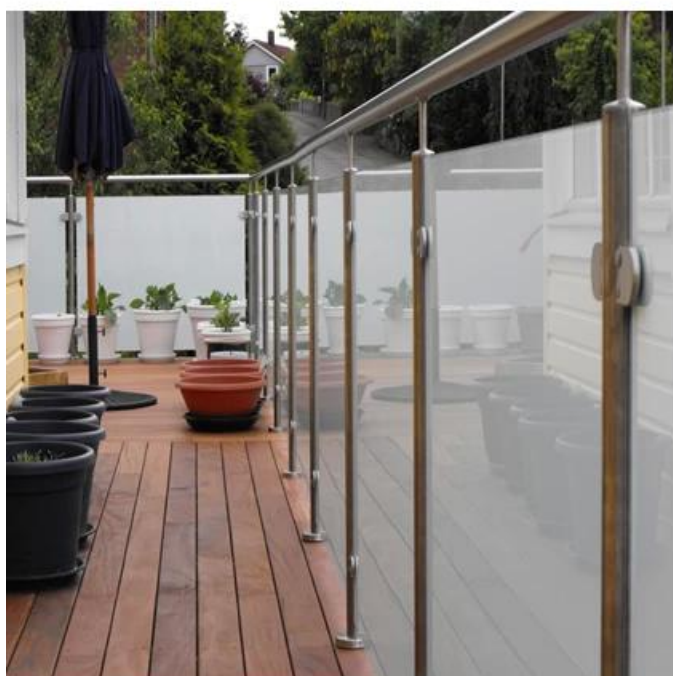
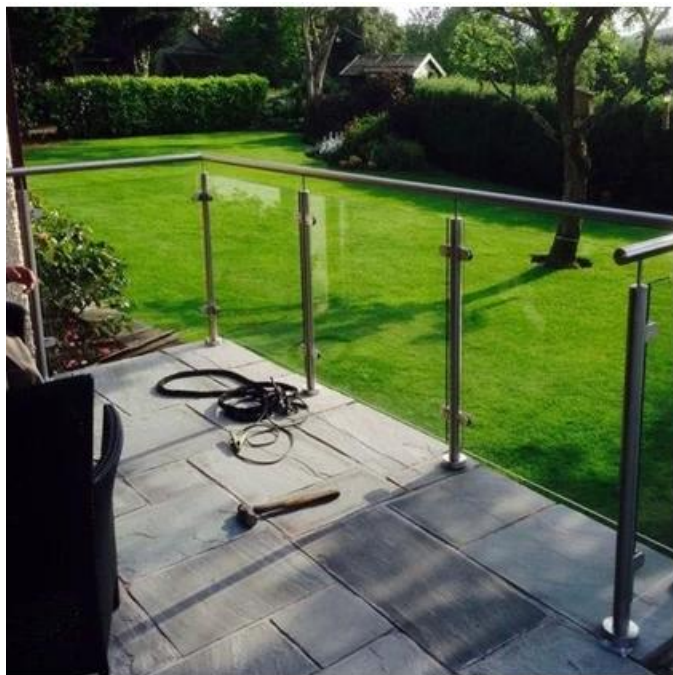
Tighten glass clamps with hex key, and check glass panel are secure with no movement.

Spettacolo del progetto





Per balcone ringhiera disegni:



Sentire gratuito a contatto noi:  
Eve Chow  
sales03@launch-china.cn  
HP / WhatsApp: +8615907334556