


1. Description

- Materiale: acciaio inox 304/316
- Uso: vetro a parete / quadrato post/turno post
- Formato: Vedi sotto disegno
- Per spessore di vetro: 8-12mm

2. immagine del prodotto

Catalogo & dimensioni

STAINLESS STEEL BALUSTRADE AND FITTINGS



SHENZHEN LAUNCH CO., LTD

<http://www.chinabalustrade.com>

END CAP

Model No. : LCH-209

Material	Stainless steel 304/316
Finish	Satin or mirror polished
For tube size	Ø 20mm, Ø 25mm, Ø 28mm, Ø 30mm, Ø 40mm, Ø 43mm, Ø 50.8mm, Ø 53.5mm

Model No. : LCH-211

Material	Stainless steel 304/316
Finish	Satin or mirror polished
For tube size	20*25mm, 25*25mm, 30*30mm, 40*40mm, 40*25mm

Model No. : LCH-213

Material	Stainless steel 304/316
Finish	Satin or mirror polished
For tube size	Ø 43mm or Ø 50.8mm

Model No. : LCH-214

Material	Stainless steel 304/316
Finish	Satin or mirror polished
For tube size	Ø 43mm or Ø 50.8mm

Model No. : LCH-215

Material	Stainless steel 304/316
Finish	Satin or mirror polished
For tube size	Ø 35.7mm or Ø 50.8mm

GLASS CLAMP

Material	Stainless steel 304/316
Finish	Satin / mirror polished
For glass thickness	8-12mm

Model No.	A	B	C	D	E
G102	50	40	25	11	3
G106R	52	40	25	11	R-21.5

Material	Stainless steel 304/316
Finish	satin / mirror polished
For glass thickness	8mm-13.52mm

Model No.	A	B	C	D	E
G102	50	40	25	11	3
G104	50	45	25	13	3
G105	55	45	28	14	3
G106R	52	43	22	5	R-21.5
G104R	52	45	28	13	R-21.5
G105R	55	45	28	14	R-25.4

Material	Stainless steel 304/316
Finish	satin / mirror polished
Size	80x35 mm
For glass thickness	8-12mm

Material	Stainless steel 304/316
Finish	Satin / mirror polished
For glass thickness	8-12mm

Material	Stainless steel 304/316
Finish	Satin / mirror polished
Size	52x52x25 mm
For glass thickness	8-12mm

G106R per 8-10mm di vetro



G102 per vetro 8-12mm (con perno all'interno e senza pin entrambi disponibili)

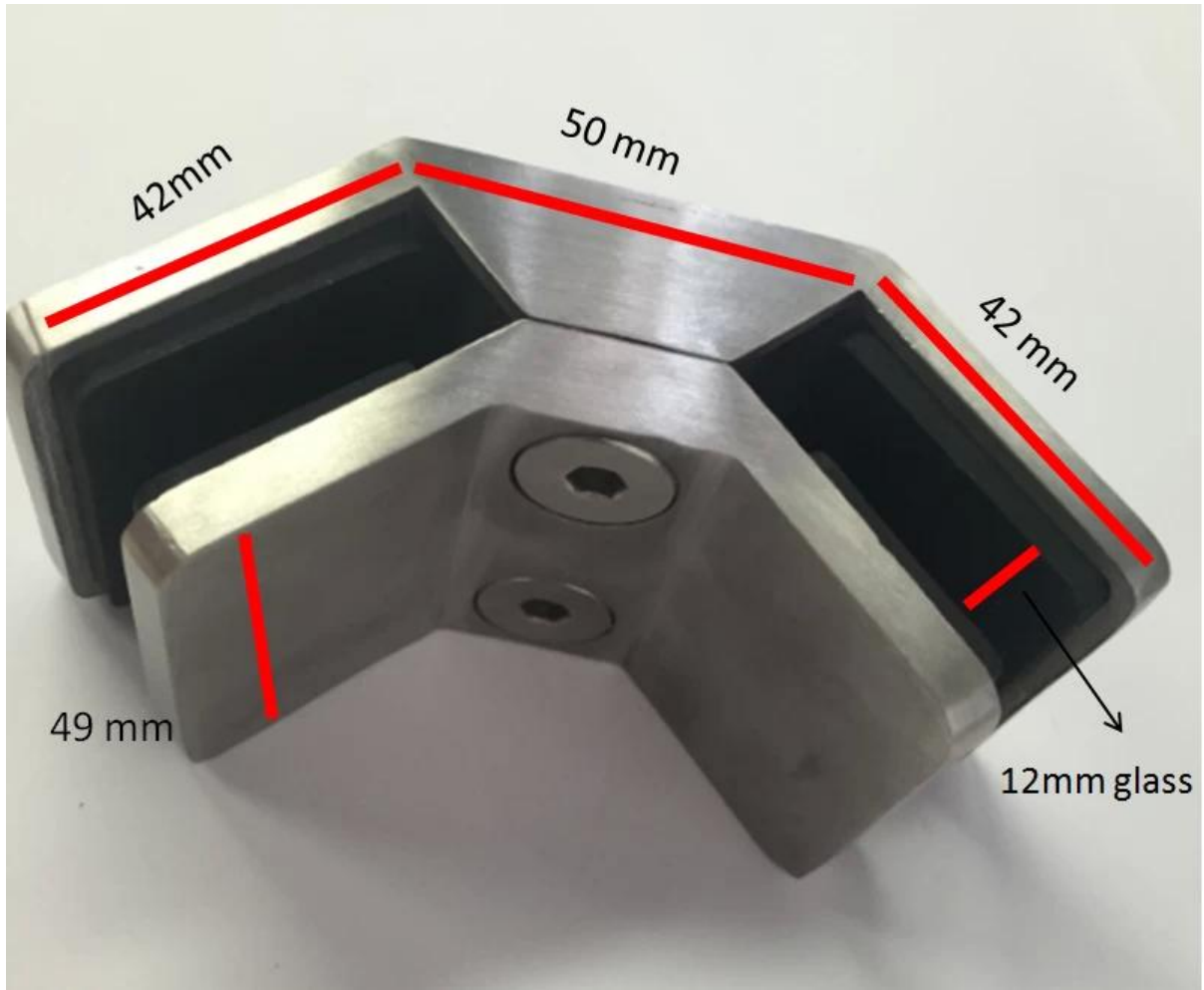


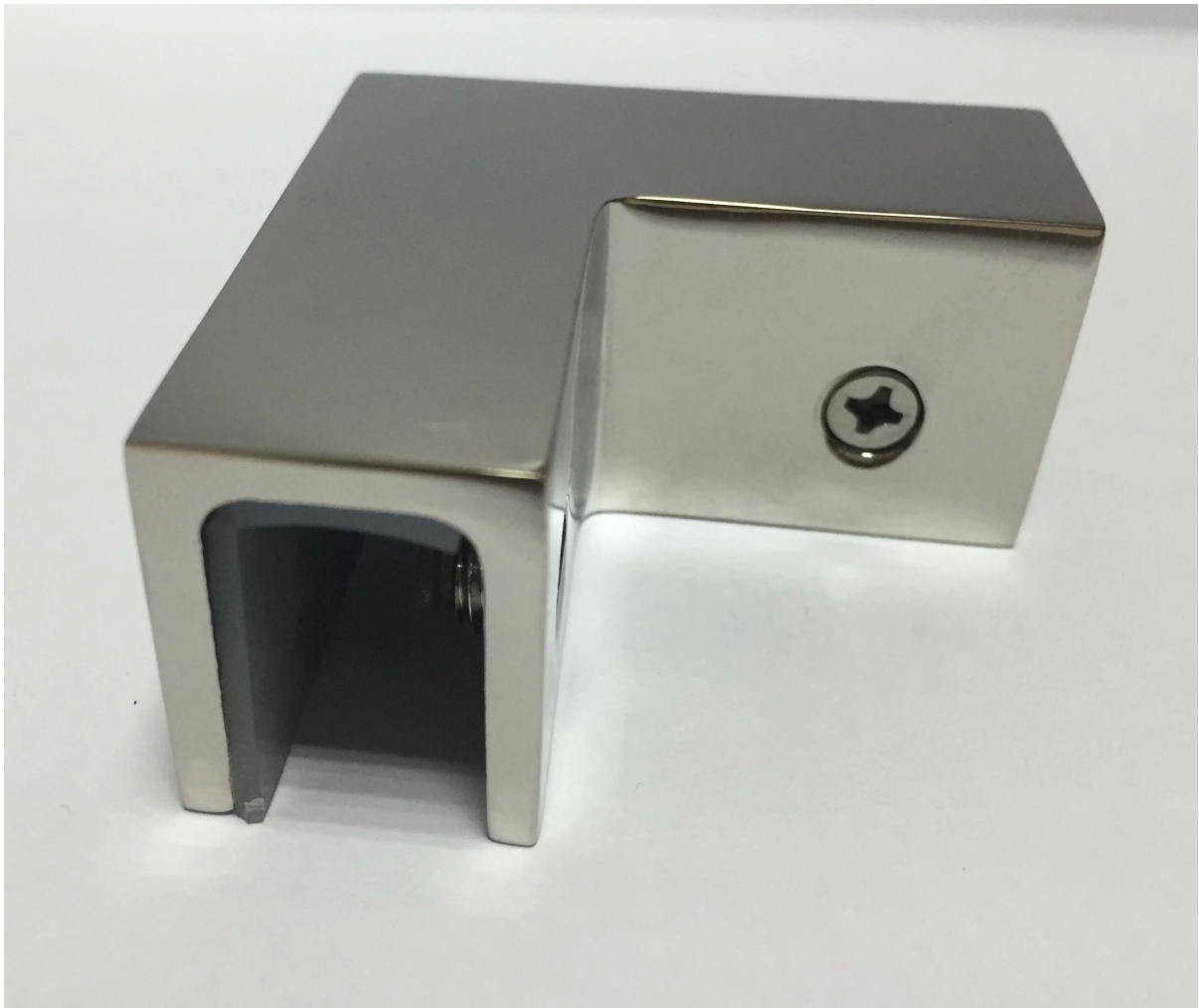
G102

Per il vetro più spesso 10-12mm, G105



Nuovo morsetto di vetro zise grande disegno per 12-15mm in vetro per angolo di 90 gradi.







Installazione

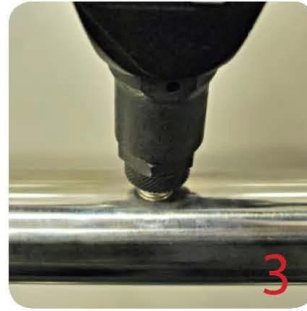
Glass Clamp Installation Guide



1
Mark and centre punch desired location of blind rivet nut location.



2
Drill centre punched hole in tube to suit blind rivet nut.



3
Insert blind rivet nut into tube and fasten with blind rivet tool.



4
Check installed blind rivet nut is secure and ready for install.



5
Align half glass clamp with blind rivet nut inline position. Screw in button head cap screw into thread and tighten with hex key.



6
Select appropriate rubber gasket to suit glass panel thickness. Install rubber gasket into both sides of glass clamp. (Note rubber gasket marked with sizes).



6a
If heavier clamping load is required please use supplied glass clamp pin, during the install process. Note glass panels will require drilling in order to fit glass clamp pins.



7
Fit glass panel into position, install second half of glass clamp secure with provided hex screws.



8
Tighten glass clamps with hex key, and check glass panel are secure with no movement.

3. consegna e imballaggio

Consegna: 3-5 giorni da espresso. 10-15 giorni di spedizione

Imballaggio: un pc in un sacchetto di plastica. 10 pezzi in una scatola.

Tempi di consegna: circa 20 giorni dopo il pagamento. (It depend sulla quantità)



packing	plastic bag+box+carton
production lead time	30-45 days ; also depending on your qty.
Shipment	 
	 
	 
payment	 

4. fabbrica & certificazione





5. clienti





**build &
renovating
expo**

Friday 4 July - Sunday 6 July 2014
Melbourne Exhibition Centre



6. contatto

KEBIL 科比奥®

深圳市朗驰商贸有限公司
SHENZHEN LAUNCH CO., LTD.

朗驰国际有限公司
LAUNCH INTERNATIONAL LIMITED.

董 萍 Doris Dong

Senior Sales Representative

☎ (86) 135 3050 6265

深圳市南山区南山大道1092号亿利达大厦B区3栋5003

Room 5003, Building 3, Yilida Building, No.1092
Nanshan Road, Nanshan District, Shenzhen, China
postal code 518054

☎ (86-755) 8603 7559

☎ (86-755) 8637 2611

✉ sales04@launch-china.cn

🌐 www.launch-china.com

www.chinabalustrade.com

Grazie per la visita. Si prega di fare non heasite a contattarci per prezzo diretto della fabbrica e fornisce consulenza professionale.