







8K Polerowana poręcz górna ze stalową poręczą dla bezramowej balustrady szklanej

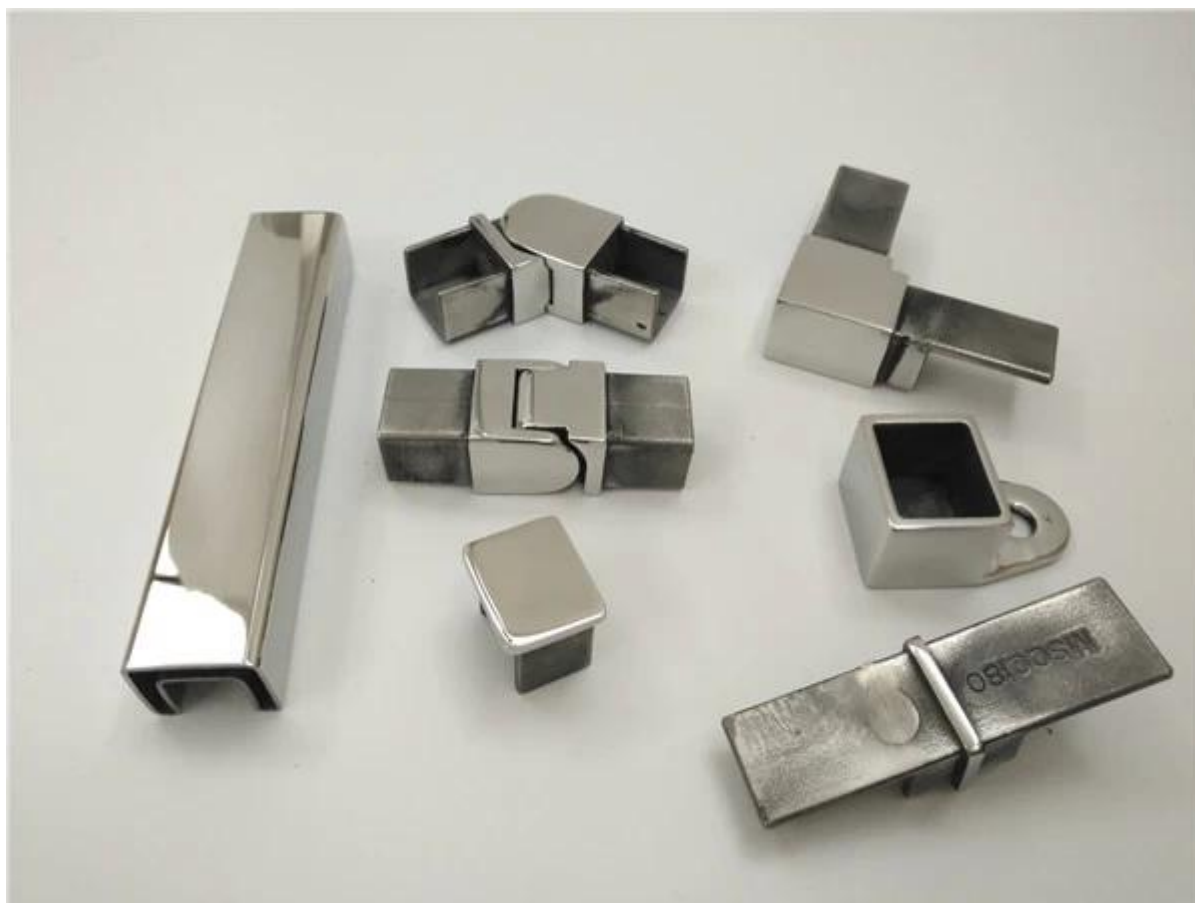
Dane techniczne:

Materiał	Stal nierdzewna 304L / 316L
Obróbka powierzchniowa	Satyna szczotkowana lub polerowana na lustro
Wymiar	25 * 21 mm, rowek 14 * 14 mm
Do grubości szkła	10-12 mm
Długość na sztukę	5,8 metra
Zbiory	tak
Raport z testu materiałowego	Dostępny
Armatura	Kanał z tworzywa sztucznego Złącze 180 stopni Złącze 90 stopni Łącznik do ściany na szynę Zaślepka Szczelinowa zaślepka Poziome łączenie obrotowe Pionowy łącznik obrotowy
Uszczelka	Worek bąbelków i ampułka; 6 szt. / Wiązka lub 1 szt. / Rura do karbowania
Standard	Australia i & Standard bezpieczeństwa Nowej Zelandii

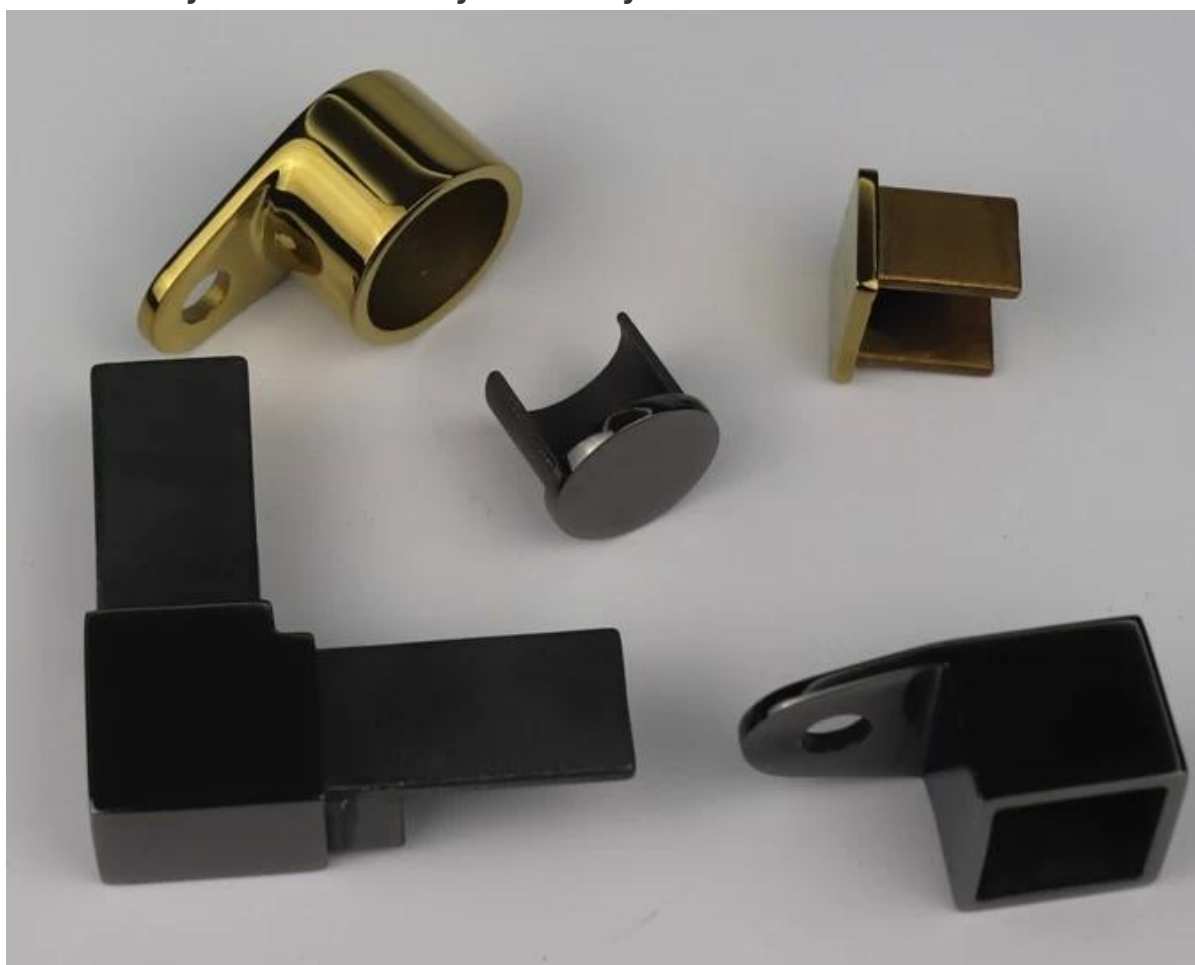


Square Shape Top Rail Fittings	MSQC180	Square 180 degree connector		stainless steel 316	Mirror polished
	MSQC90	Square 90 degree connector			
	MSQCW	Square wall to rail connector			
	MSQCAP	Square end cap			
	MSQC90 - A1	Vertical, Up/Down adjustable connector			
	MSQC90 - A2	Horizontal, Left/Right adjustable connector			





Galwanizacja w kolorze złotym i czarnym



2. Opakowanie:

1). Opakowanie kartonowe tuby

Każda poręcz ze szczelinami w kawałkach pokryta jest plastikowymi rękawami, a następnie włożona w tekturową tubę, po 5 szt. W wiązkę.

2). Opakowanie z torebką na śmieci

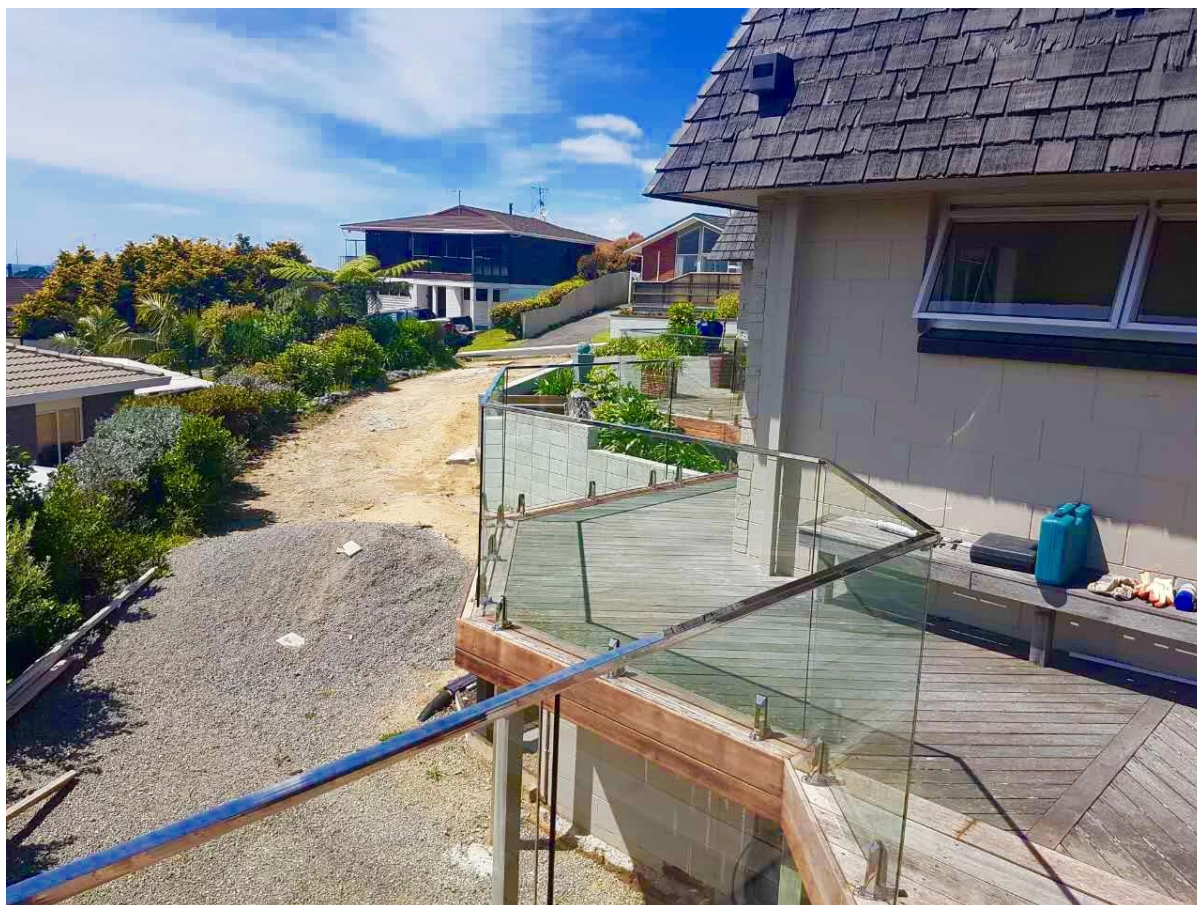
Każda poręcz ze szczelinami z tworzywa sztucznego jest pokryta plastikowymi rękawami, a następnie 6 sztuk z plecioną torbą zapakowaną w paczkę, następnie pakiet ponownie założyć zewnętrzną torebką bąbelkową.







3. Projektuj zdjęcia w celach informacyjnych:



Informacje o firmie:

Shenzhen Launch Co., Ltd was established in 2004, located at Nanshan District, Shenzhen, and one hour by car from Hongkong International Airport. Our main product is high-grade building materials includes stainless steel balustrade post, staircase handrail, balcony guardrail, swimming pool fence and other high-grade building materials. All the products are designed strictly according to the high-end market requirements. We have our own factory in Tangxia Town, Dongguan, has a variety of precision equipment more than 50 sets: CNC lathe, milling machine, punching machine, pipe cutter, argon welder, drilling machine, polisher, etc. which can provide customers with complete product processing services. With the German SPECTRO Spectrometer, we insist on testing every batch of materials to ensure that the material is highly qualified. We also have hardness gauge, secondary element and other test equipment to ensure the products meets customers' requirements.

ABOUT US

Our Team



OUR ADVANTAGE

Please do not hesitate to contact us if you have any requirement regarding our production lines, you can expect a timely reply with professional solutions!



Own factory, shortest lead time.



Can help customers design product drawings based on customer ideas and design engineering installation drawing according to the customer site sketch.



Sample order, trial order acceptable.



Provide material test report to ensure that the material is qualified.



13 years of industry experience, we can help customers recommend the best solution to help customers save cost.

OUR FACTORY

More than 13 years experience in hardware industry design and processing, we can provide customized services from design to the sample and small batch trial production.



OUR CERTIFICATE

With premium quality, competitive price and superior service, we won a lot of customers' favor.
Our products are popular in North America, European and Australia.



PRODUCTION PROCESS



Casting



CNC lathe



CNC Milling



Stamping



Drilling & Tapping



Polishing

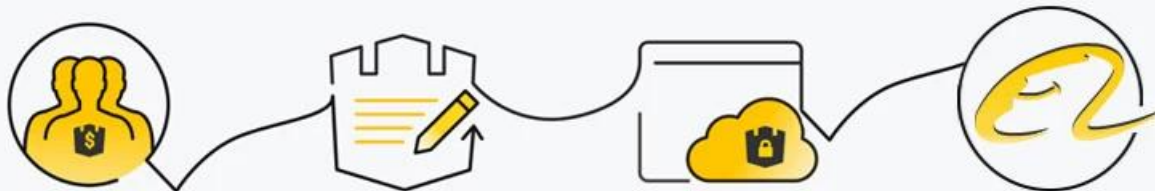


PACKAGING & DELIVERY



PAYMENT & TRANSPORTATION

Welcome Alibaba Trade Assurance Order!



- 1 Start an order
- 2 Negotiate terms with our sales service & confirm order
- 3 Make payment
- 4 Alibaba provide full assurance



Skontaktuj się z nami swobodnie, aby uzyskać więcej informacji:

Eve Chow

Email: sales03@launch-china.cn

WhatsApp / Mobile / WeChat: +8615907334556