

Blat szklany poręcz balustrady projektowanie

materia	Stal Satinless
koniec	Lustro / satyna
Wymiar	Dia 25.4mm, groove 14 * 14mm, 5,8 metra na długości (rundy)
	25 * 20mm, groove 14 * 14mm, 5,8 metra na długości (kwadrat)
Próba	availbale
MOQ	1 szt (5,8 Długość / szt)
Zapłata	T / T, L / C, West Union, Paypal
Pochodzenie	Shenzhen

zdjęcie produktu





Round Top złączki szynowe



ISO
9001:2008
REGISTERED



Shenzhen Launch Co.,Ltd



www.launch-china.cn

Square początek złączki szynowe



ISO
9001:2008
REGISTERED

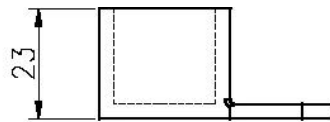


Shenzhen Launch Co.,Ltd

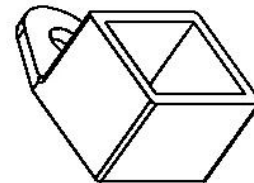
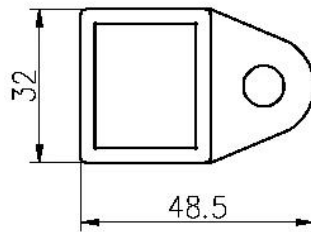
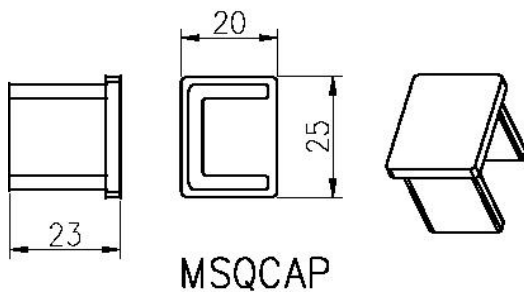


www.launch-china.cn

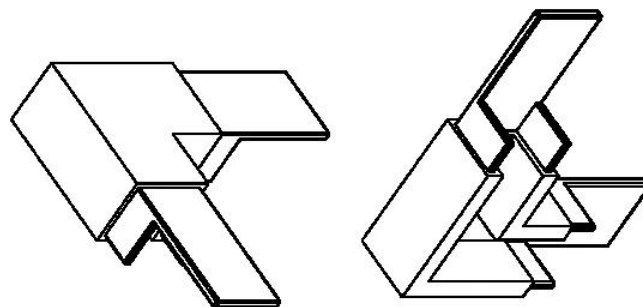
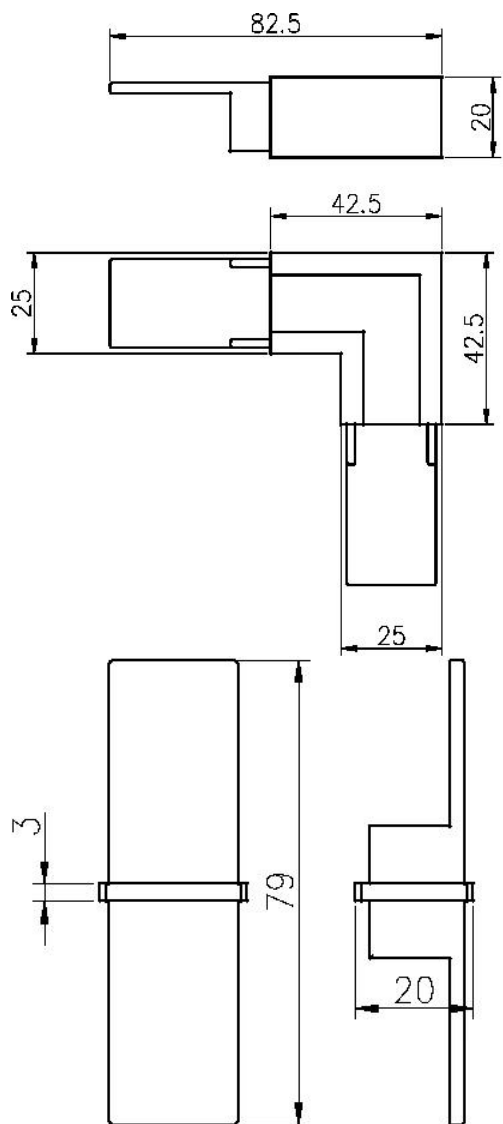
Rysunek



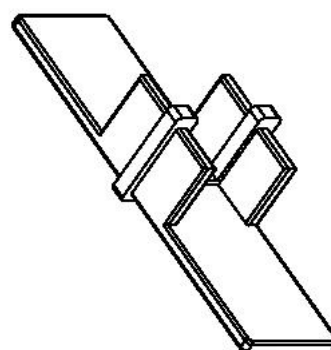
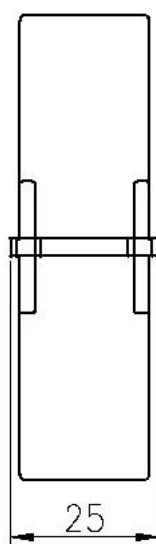
25*20 tube



MSQCW



MSQC90



zdjęcia z projektu







Factory & Pakiet



shop1384534544479.1688.com



www.launch-china.com



Kontakt: Doris & Lt; sales04@launch-china.cn>