

Pet Child friendly Glass Balustrade Patio Deck Railings With Glass Door Hinges







Szybkie Szczegóły:

| | |
|--------------------------|---|
| Product Maja | Stainless Steel Glass Hinge for Glass Door Glass Gate |
| Materiał | Stainless steel 316 |
| Skończyć | Mirror polished or satin brushed |
| Do Glass Thickness | 8-10mm |
| Drill Glass Holes | Diameter 12mm holes required in glass |
| 3 Types Available | 1) Glass to glass hinge G-G1 2) Glass to round post hinge G-R1 3) Glass to square wall/post hinge G-W1 |
| Manufacture Method | Stamping (2.5mm thick) |
| Maximum Glass Door Leaf | 20kg |
| Minimum Ilość zamówienia | jeden kawałek |
| Próbka | Available to check quality before order |
| Inspekcja fabryki | Dostępny |
| OME & ODM Service | Available |

Hinge types:

- 1) Glass to glass hinge
 - Model No.: G-G1
 - Net weight: 435g/piece



G-G 1

- 2) Glass to round post
 - Model No.: G-R1
 - Net weight: 300g/piece



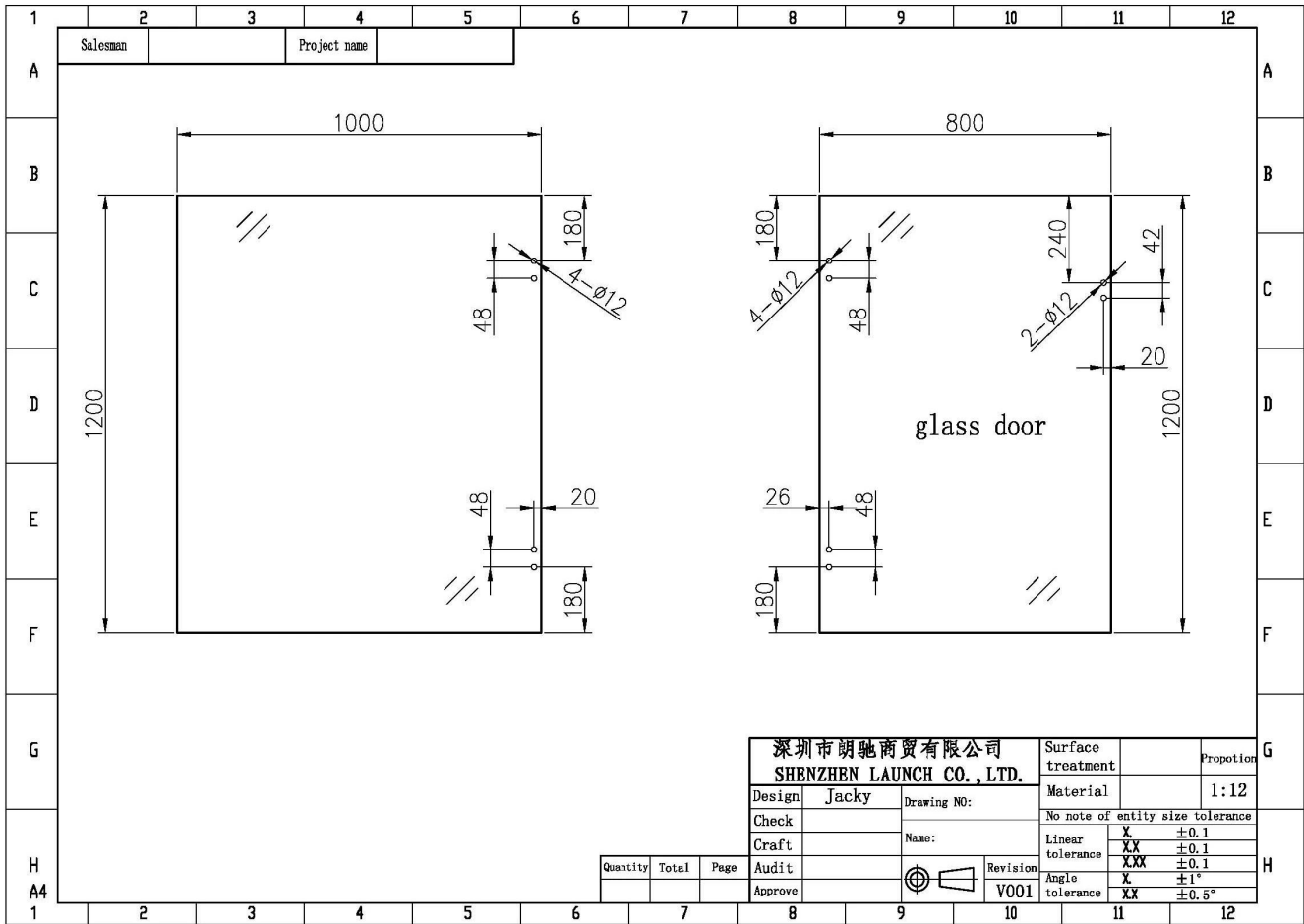
G-R 1

- 3) Glass to square post/wall hinge
- Model No.: G-W1
- Net weight: 320g/piece



G-W 1

4) Drilled glass hole size



Glass hinge application:

KEBIL 科比奥®





Packaging:

1. One pair into one bubble bag, then into one white box.
2. Or packing as customers' requirements.



Informacje kontaktowe:

Any enquiries or questions, please leave a message. Will get back to you as soon as possible!
For any urgent enquiry, please get in touch as below:

-Wendy Email: sales04@launch-china.cn

-Mob/whats APP: +86-159 8933 9827