

## 3/8" and 1/2" SS316 Heavy Duty Stainless Steel Glass Gate Hinges for Round Post

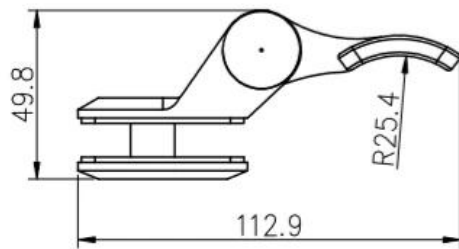
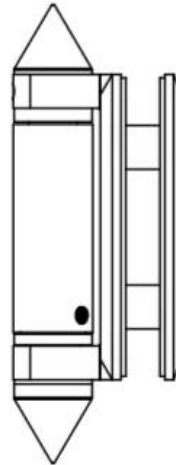
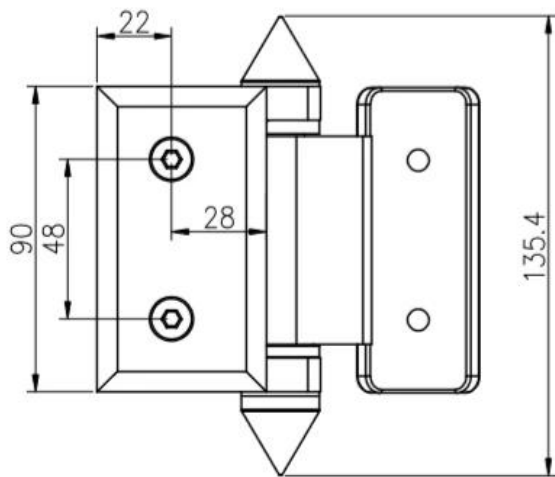
### Specifications:

Material	Stainless steel 316/Duplex 2205
Surface treatment	Satin brushed or mirror polished
Product name	Heavy duty stainless steel hinges / Glass pool fence hinge / Spring hinge / Adjustable gate hinges
For glass thickness	8mm/10mm/12mm
For glass type	Tempered glass, laminated glass, frosted tempered glass
Fatigue test	11000 times
Hinge self-characteristics	Self or automatically closing spring hinges
Hinge models	1.glass to glass hinge 2.glass to round post hinge 3.glass to square post / wall hinge
Hinge weight(heavy-duty type)	A. 1229g for glass to glass hinge B. 920g for glass to round post hinge C. 930g for glass to square post /wall hinge
Glass gate/door open angle	90 degree in and 90 degree out
Hinge package	Plastic bag and white box with neutral packing
Payment terms	T/T(30/70 or 50/50) and western union and alibaba escrow etc
Sample delivery time	Within 7days
Production lead time	Within 10-15 workdays upon the deposit
Shipping methods	DHL,FEDEX,UPS etc courier for small order; vessel shipping by sea for big order
Trade terms	EXW, FOB, CNF, CIF, DDU or DDP.

**Glass to diameter 50.8mm(2") round post hinge G-R:**







深圳市朗驰商贸有限公司 SHENZHEN LAUNCH CO., LTD.			表面处理	比例
设计	Jacky	图号:G-R	材料	1:1.5
校对			未注实体尺寸公差	
工艺			X	±0.1
审核			XX	±0.1
批准			XXX	±0.1
		版次	X	±1°
		V001	XX	±0.5°

Model No. G-G, glass to glass hinge  
Model No. G-W, glass to square post / wall hinge



Glass to glass hinge



Glass to wall hinge

## Glass Hinge

**KEBIL** 科比奥®



Glass to round post hinge

## Glass Latch

**KEBIL** 科比奥®



Glass to glass latch 180 degree



Glass to glass latch 90 degree



Glass to wall/square post latch

**Project Photos:**

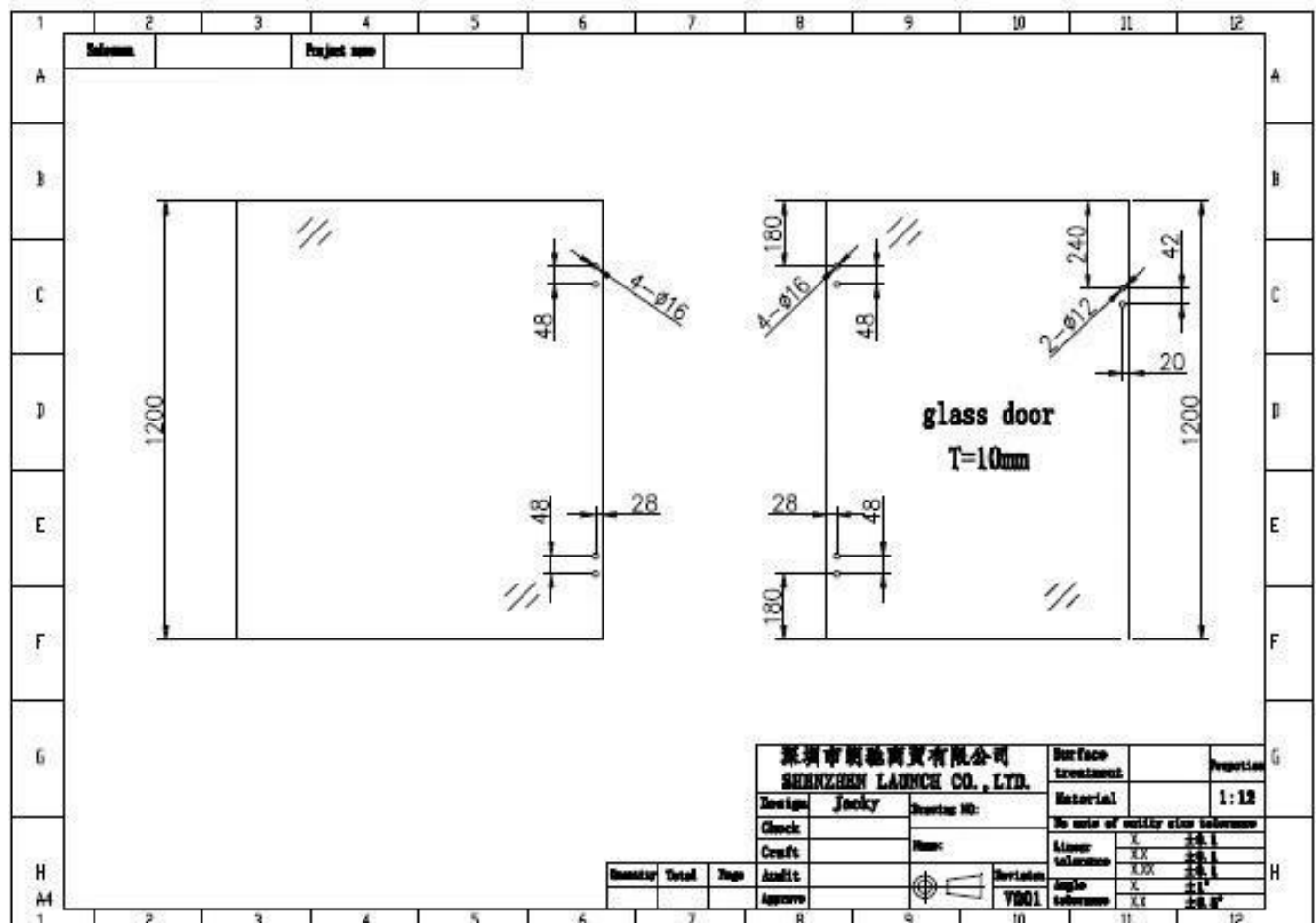


pool fencing spring loaded stainless steel 316 glass door hinge installed





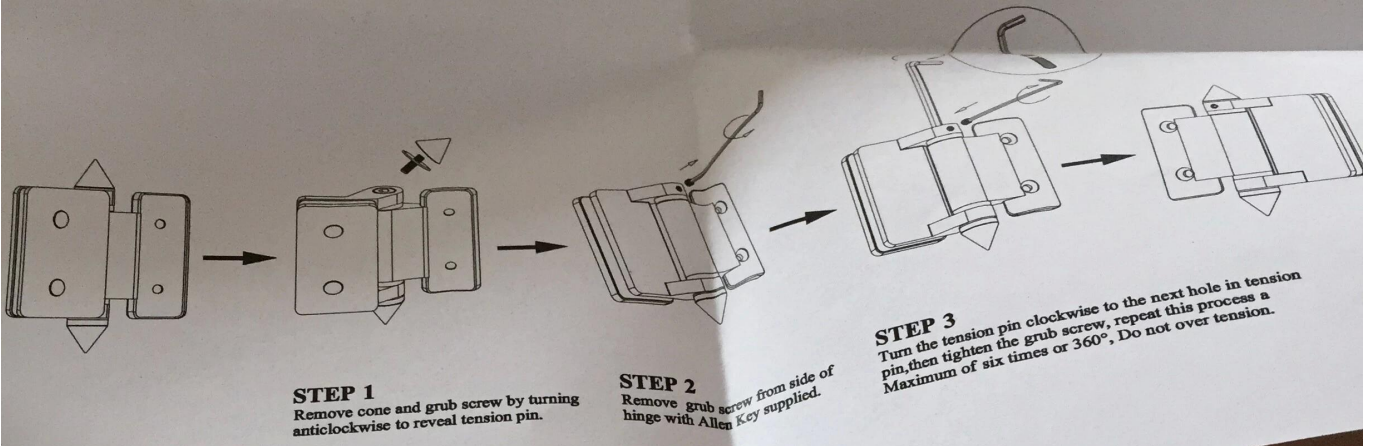
glass door hinge standard glass panel holes position drawing



Stainless steel 316 pool fence glass door hinge installation instruction:  
[Packing:](#)



## Instructions for adjusting tension on Glass to Round post hinge



Company Information:



Shenzhen Launch Co., Ltd was established in 2004, located at Nanshan District, Shenzhen, and one hour by car from Hongkong International Airport. Our main product is high-grade building materials includes stainless steel balustrade post, staircase handrail, balcony guardrail, swimming pool fence and other high-grade building materials. All the products are designed strictly according to the high-end market requirements. We have our own factory in Tangxia Town, Dongguan, has a variety of precision equipment more than 50 sets: CNC lathe, milling machine, punching machine, pipe cutter, argon welder, drilling machine, polisher, etc. which can provide customers with complete product processing services. With the German SPECTRO Spectrometer, we insist on testing every batch of materials to ensure that the material is highly qualified. We also have hardness gauge, secondary element and other test equipment to ensure the products meets customers' requirements.

## ABOUT US

### Our Team



## OUR ADVANTAGE

Please do not hesitate to contact us if you have any requirement regarding our production lines, you can expect a timely reply with professional solutions!



Own factory, shortest lead time.



Can help customers design product drawings based on customer ideas and design engineering installation drawing according to the customer site sketch.



Sample order, trial order acceptable.



Provide material test report to ensure that the material is qualified.



13 years of industry experience, we can help customers recommend the best solution to help customers save cost.

## OUR FACTORY

More than 13 years experience in hardware industry design and processing, we can provide customized services from design to the sample and small batch trial production.



**OUR CERTIFICATE**

With premium quality, competitive price and superior service, we won a lot of customers' favor.

Our products are popular in North America, European and Australia.





# ***PRODUCTION PROCESS***



Casting



CNC lathe



CNC Milling



Stamping



Drilling & Tapping



Polishing



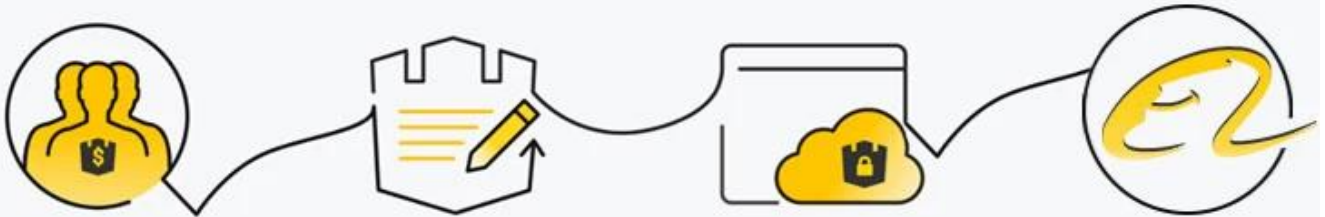
# ***PACKAGING & DELIVERY***





# PAYMENT & TRANSPORTATION

Welcome Alibaba Trade Assurance Order!



1 Start an order

2 Negotiate terms with our sales service & confirm order

3 Make payment

4 Alibaba provide full assurance



## FAQ

1. Are you factory?

- Yes, we are factory.
2. Do you offer free samples?  
Yes, we offer free samples, but customers need to pay express charges.
  3. What materials do you have?  
We have the material of stainless steel 304, 316, 316L and Duplex 2205.
  4. What is your MOQ?  
MOQ of order required is 1 pc.
  5. What kind of payment do you accept?  
We accept the payment of T/T, LC, PayPal, West Union, etc.
  6. What is your payment term?  
Our payment term is T/T(100% or 30/70) or LC at sight .
  7. What is your delivery time?  
Our delivery time is from 5days to 30days base on your quantity.
  8. Do you offer OEM & ODM service?  
Yes we offer OEM&ODM service.
  9. Do you offer after-sales service?  
Yes, we offer after-sales service. Any complaint for orders will be dealt with in time within 12 hours.

Contact us for more information now□

Eve

**Shenzhen Launch Co., Ltd**

Email: [sales03@launch-china.cn](mailto:sales03@launch-china.cn)

Skype: launch\_03

HP: +8613686807796