

## **316 Stainless Steel Adjustable Glass Railing Standoff Pin with Spacer for Balcony / Stairs**

The standoff can be mounted to both wooden and concrete floor.

Application places: outdoor glass railing and indoor glass railing system

Application areas:

balcony glass railing

staircase glass railing design

terrace glass railing design etc.

**Dia 50mm** Glass Standoff in **Satin Finish**:



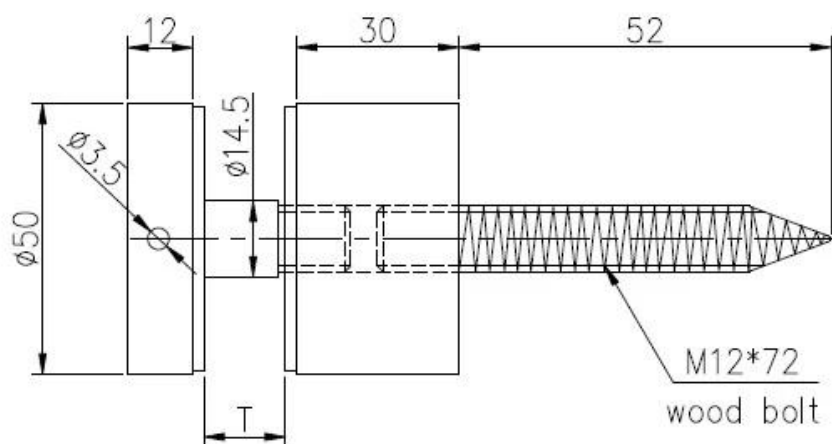
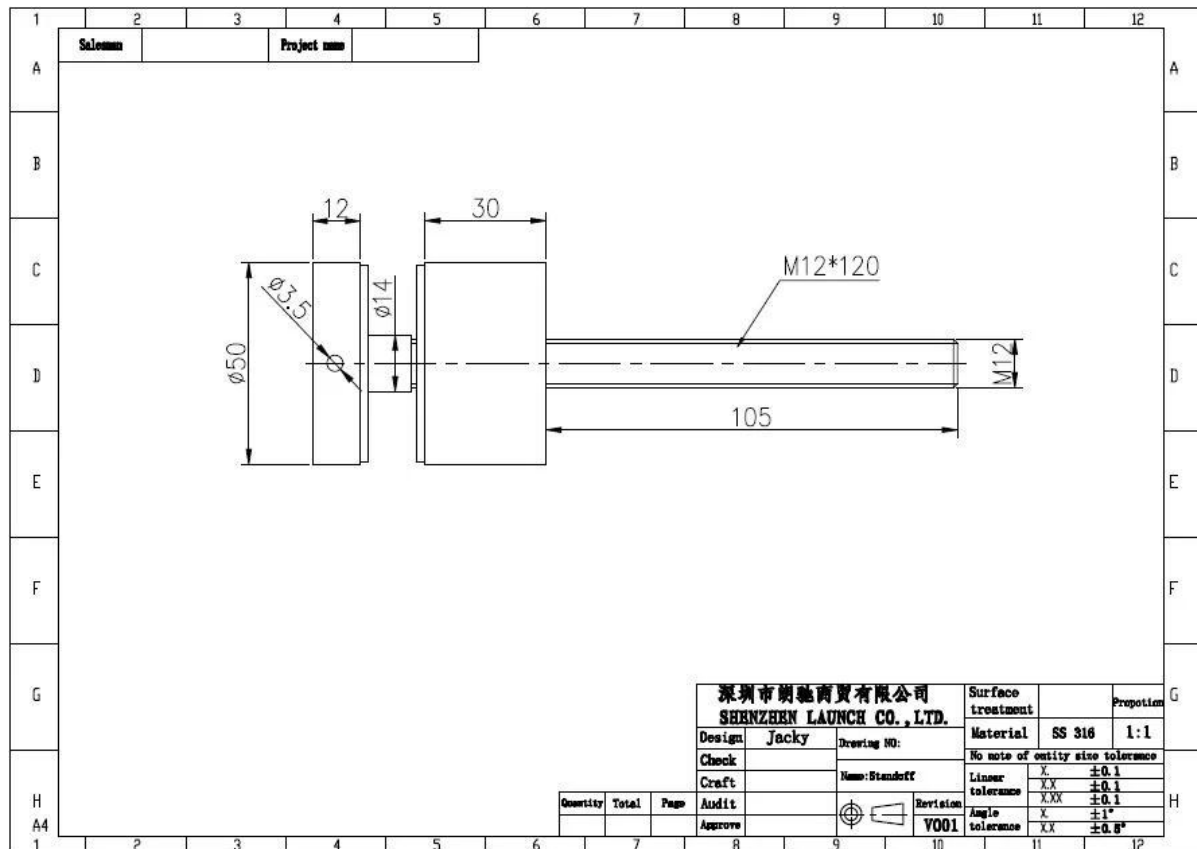
**Dia 50mm** Glass Standoff in **Mirror Finish**:



**With concrete bolt & wood screw:**



**Technical drawing:**



深圳市朗驰商贸有限公司 SHENZHEN LAUNCH CO., LTD.				Surface treatment		Proportion
Design	Jacky	Drawing NO: SF-68		Material		1:1
Check		Name: Standoff		No note of entity size tolerance		
Craft				Linear tolerance	X	±0.1
Audit				Linear tolerance	XX	±0.1
Approve				Linear tolerance	XXX	±0.1
				Angle tolerance	X	±1°
				Angle tolerance	XX	±0.5°
				Angle tolerance	XXX	±0.5°

## Project Photos:

outdoor and indoor glass standoff, frameless standoff glass railing design, stainless steel glass standoff bracket, glass standoff pin









[Stainless steel glass standoff for frameless glass balustrade](#)



[stainless steel standoff, bracket for glass panels, railing design](#)



**Contact us now for more information!**

**Email: [sales03@launch-china.cn](mailto:sales03@launch-china.cn)**

**HP/WhatsApp/WeChat: +8613686807796**