

Description

[Factory direct certified glass spigot for frameless glass railing system.](#)

- Material: duplex 2205 (superior corrosion resistance compared to stainless steel 316)
- Finish: polished or brushed
- Friction fit(no holes required in glass), suitable for 10-13mm toughened glassglass
- Spigot for 15-19mm glass is available if quantity is over 60 pieces
- Application: swimming pool fence, balcony glass railing, deck railing, staircase...

--4 models glass spigot available

- (1) Model No.: **SBM-2** (square base plate spigot)
- (2) Model No.: **RBM-2** (round base plate spigot)
- (3) Model No.: **SCM-2** (square core drill spigot)
- (4) Model No.: **RCM-2** (round core drill spigot)

Duplex 2205 material test report

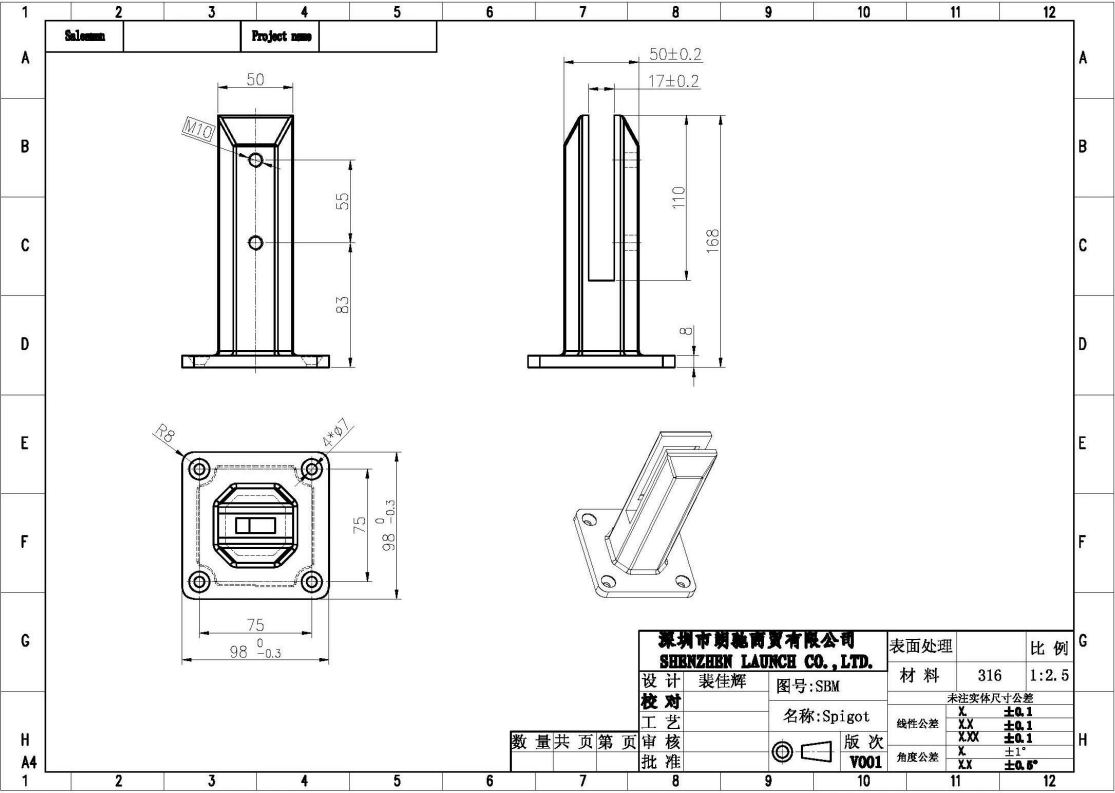


Products details

Glass spigot **SBM-2**

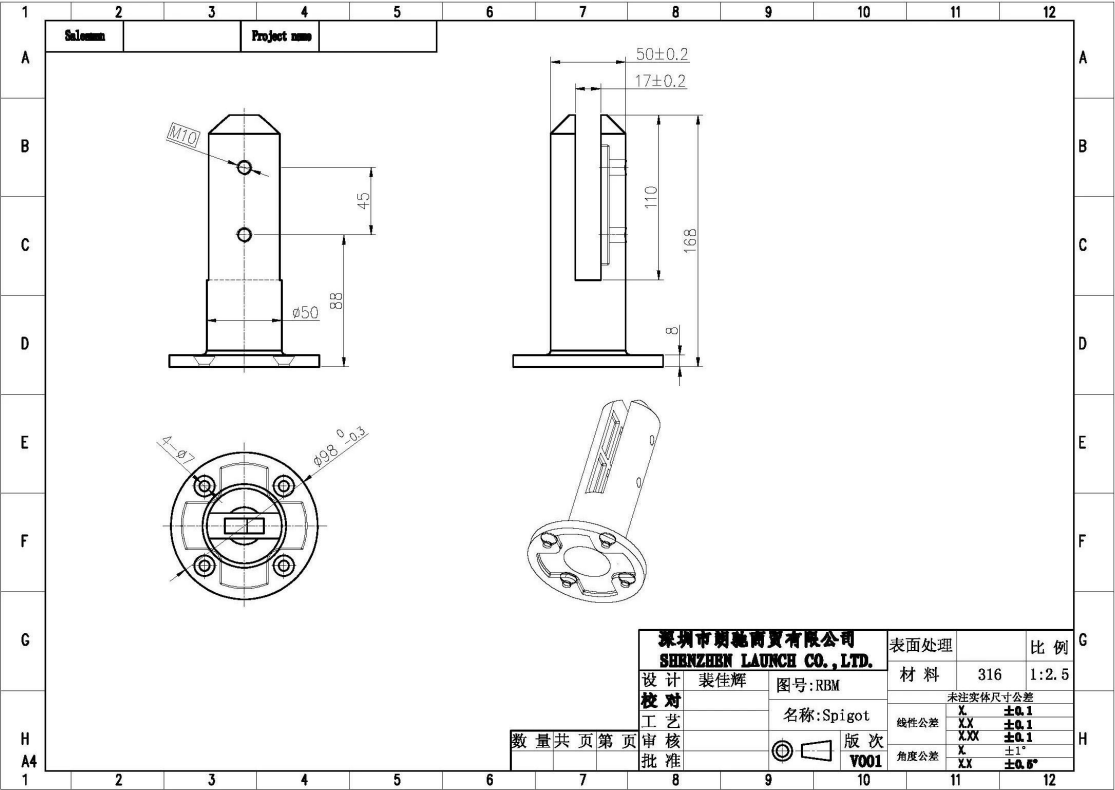
- Net weight:1.32kg/piece
- Hight: 168mm
- Base plate size: 100x100mm





Glass spigot **RBM-2**
-Net weight:1.08kg/piece

- Hight: 168mm
- Base plate size: φ100mm





Glass spigot **SCM-2**

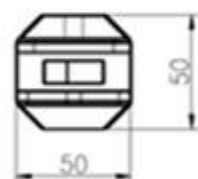
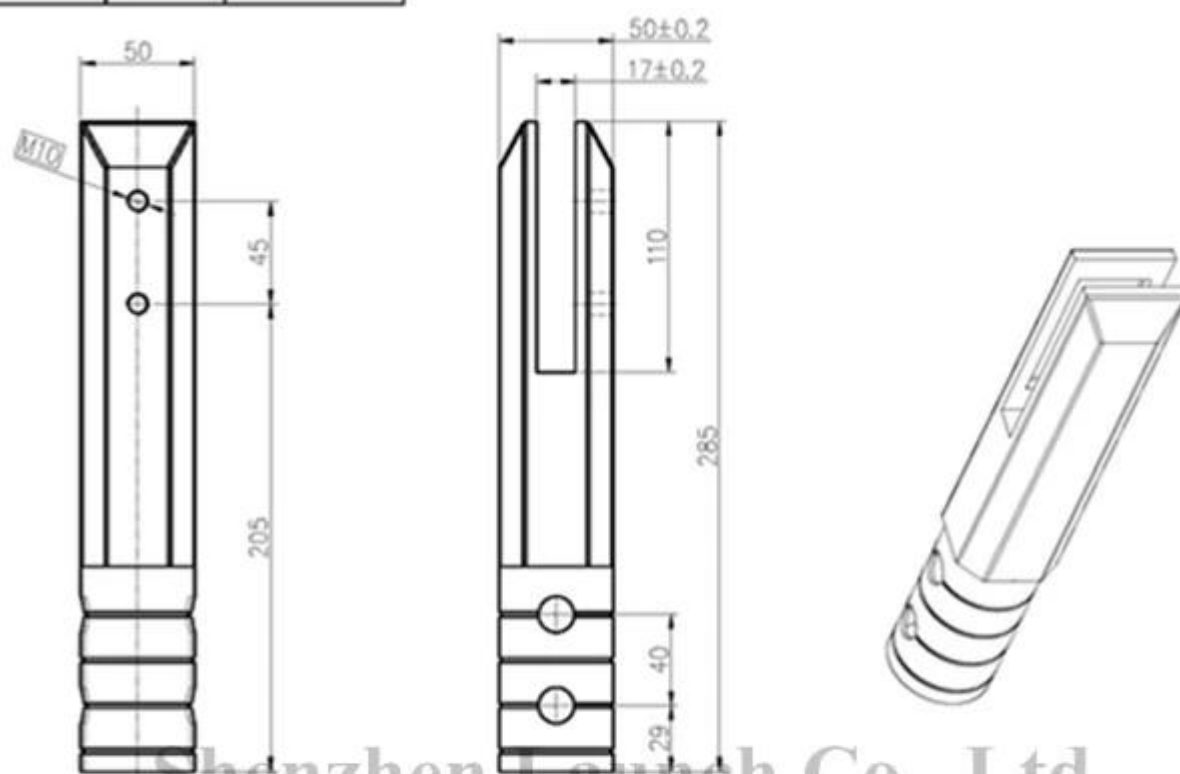
-Net weight:1.66kg/piece

-Hight: 285mm, 90mm fixing into ground



3	4	5	6	7	8	9	10	11
---	---	---	---	---	---	---	----	----

Project name



深圳市明瑞商贸有限公司 SHENZHEN LAUNCH CO., LTD.			表面处理
设计	裴佳辉	图号:SCM	材料
校对		名称:Spigot	未
工艺			线性公差
审核			角度公差
批准			
		版次	
		Y001	

数量共页第页

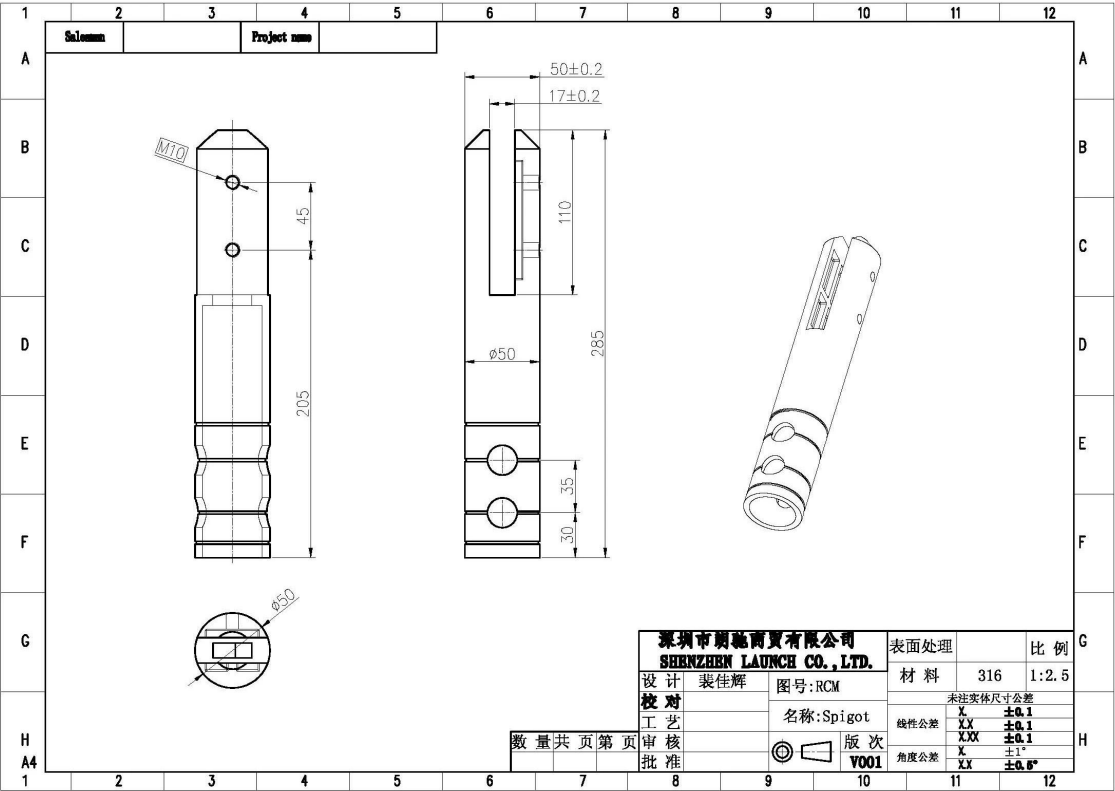
3	4	5	6	7	8	9	10	11
---	---	---	---	---	---	---	----	----



Glass spigot **RCM-2**

-Net weight:1.41kg/piece

-Hight: 285mm, 90mm fixing into ground



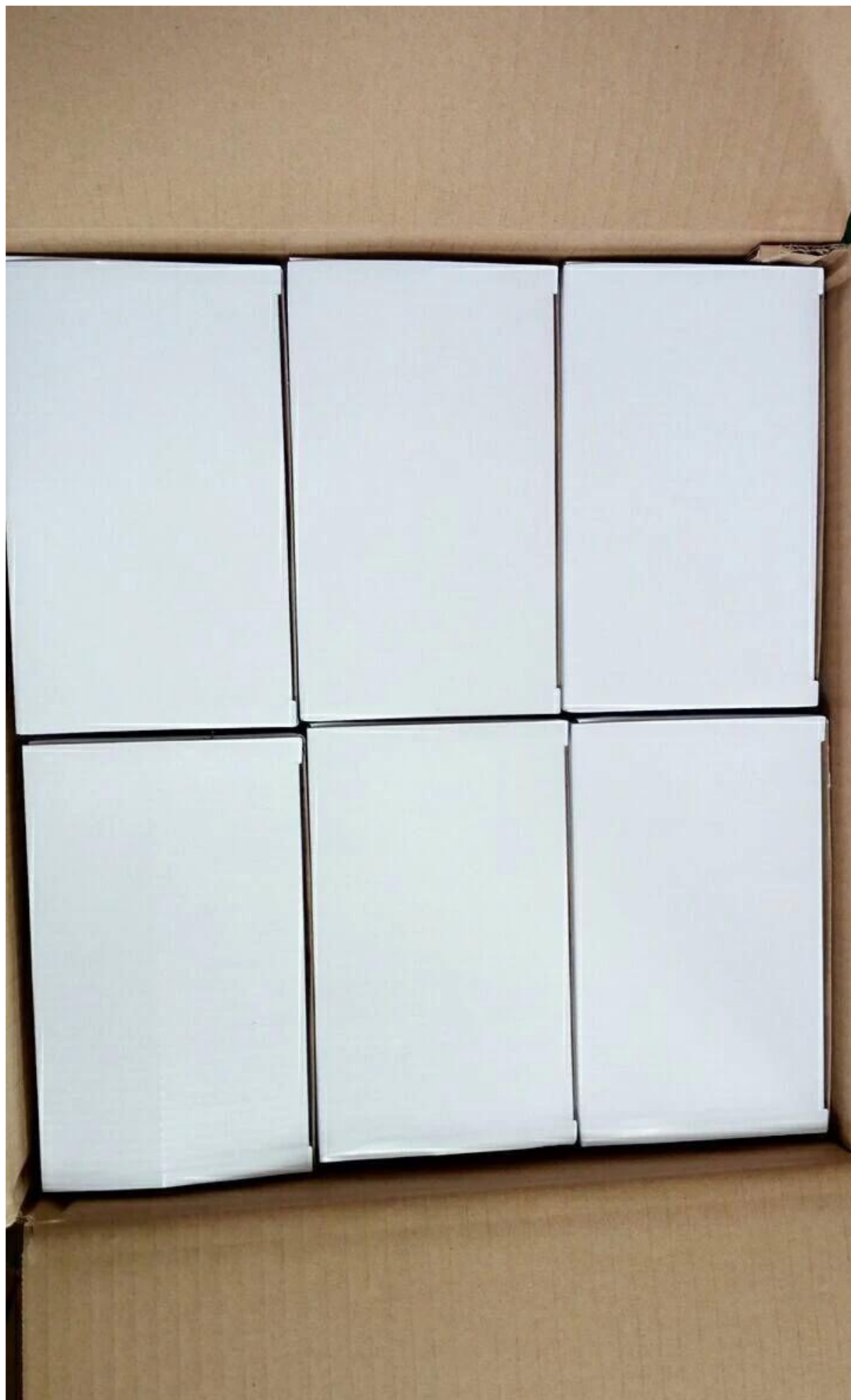


Packaging & Delivery

--One pc into one plastic bag, then into one box. 12 pcs into one carton.

--Shipping option: by sea(10-15 days), by air(3-5 days)





Need a quote or any questions, please leave a message.

Or contact me as below info. will get back to you as soon as possible !

For any urgent enquiry, please get in touch on wechat: 973219879 or what's up: +86-13530506265 .



董 萍 Doris Dong

Senior Sales Representative

☎ (86) 135 3050 6265

深圳市南山区南山大道1092号亿利达大厦B区3栋5003

Room 5003, Building 3, Yilida Building, No. 1092
Nanshan Road, Nanshan District, Shenzhen, China
postal code 518054

☎ (86-755) 8603 7559

☎ (86-755) 8637 2611

✉ sales04@launch-china.cn

🌐 www.launch-china.com

www.chinabalustrade.com