

Stainless Steel Glass Fencing glass gate use hinge

Quick details:

Product Name	Stainless steel glass fencing self closing spring loaded glass door hinge
Material	Stainless steel 316
Finish	Mirror polished or satin brushed
For Glass Thickness	8-10mm
Drill Glass Holes	Diameter 12mm holes required in glass
3 Types Available	1) Glass to glass hinge G-G1 2) Glass to round post hinge G-R1 3) Glass to square wall/post hinge G-W1
Manufacture Method	Stamping (2.5mm thick)
Maximum Glass Door Leaf	20kg
Minimum Order Quantity	one piece
Sample	Available to check quality before order
Factory Inspection	Available
OME & ODM Service	Available

Hinge types:

- 1) Glass to glass hinge
 - Model No.: G-G1
 - Net weight: 435g/piece



G-G 1

- 2) Glass to round post
- Model No.: G-R1
 - Net weight: 300g/piece



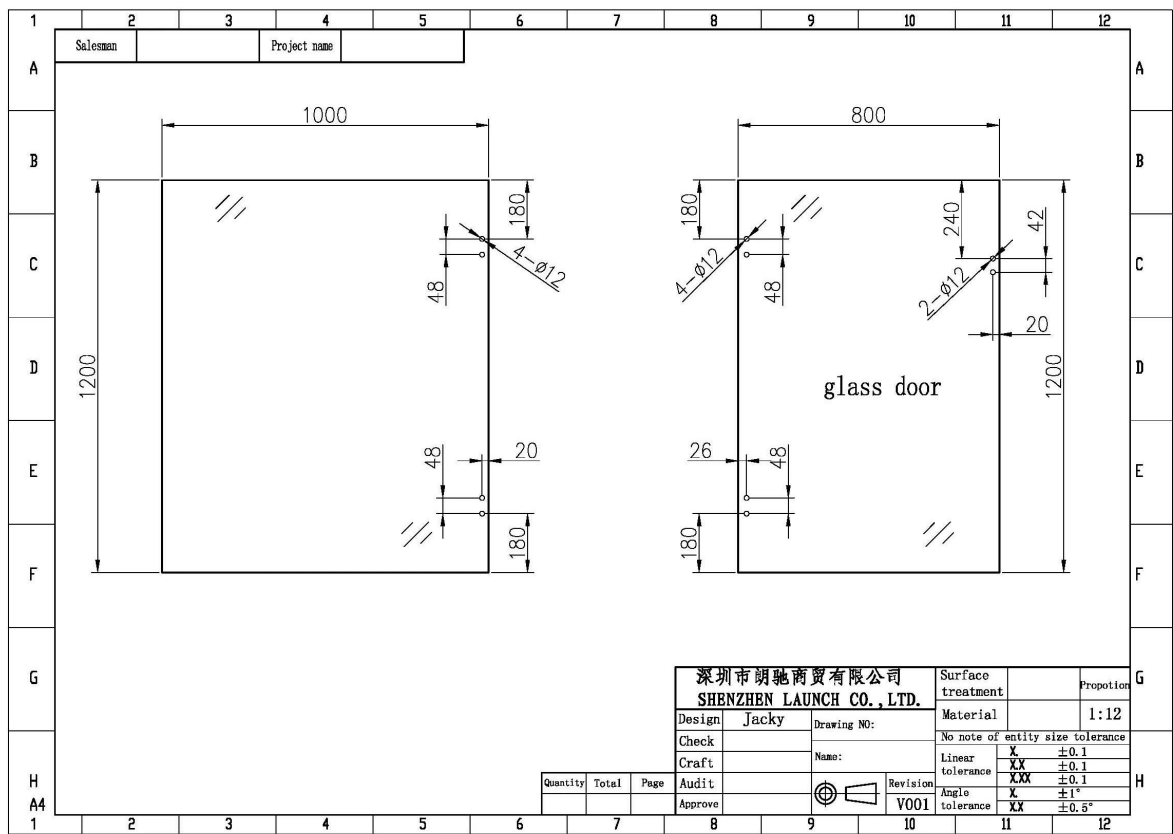
G-R 1

- 3) Glass to square post/wall hinge
- Model No.: G-W1
 - Net weight: 320g/piece



G-W 1

4) Drilled glass hole size



Glass hinge application:





Packaging:

1. One pair into one bubble bag, then into one white box.
2. Or packing as customers' requirements.



Contact:

Any enquiries or questions, please leave a message. Will get back to you as soon as possible!

For any urgent enquiry, please get in touch as below:

-Email: sales05@launch-china.cn Claire

-Tel: 13129593615

-Skype: launch-05

-Mob/whats APP: +86-13129593615