

## Description

- Material: high grade alloy 316 stainless steel, or as per your requirement
- Finish: brushed or polished
- Diameter 50mm (customer size is available)
- For mounting to steel, concrete, or wood substrate
- For glass thickness: 8-12mm, or as per your requirement
- Base, cap, mounting, rubber washers and grommet are included.
- Sample: available to check quantity before placing an order

## Products details

Polished standoff SF-50 (with screw mounting to steel and concrete)

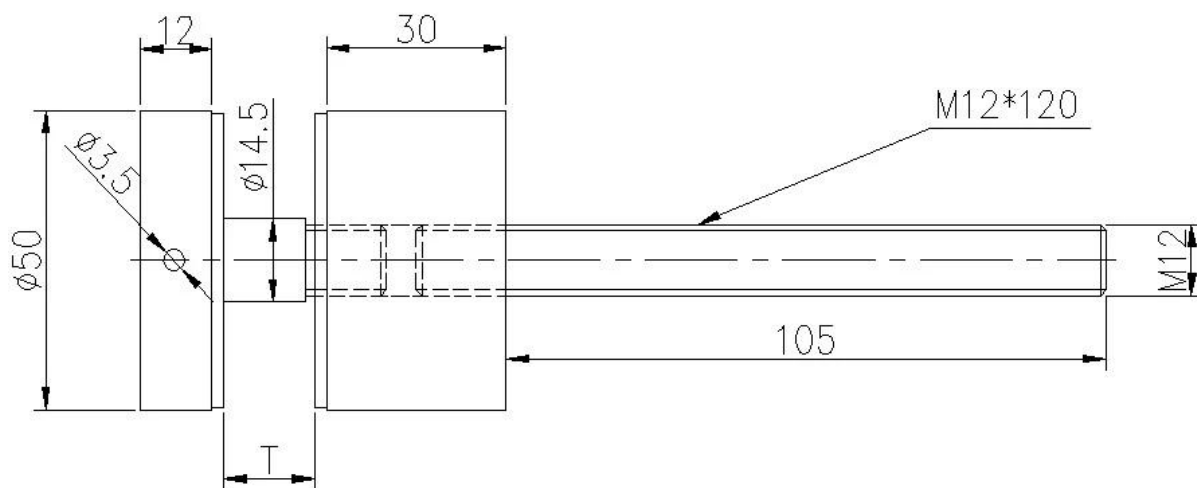


Brushed standoff SF-50 (with screw mounting to wood substrate)

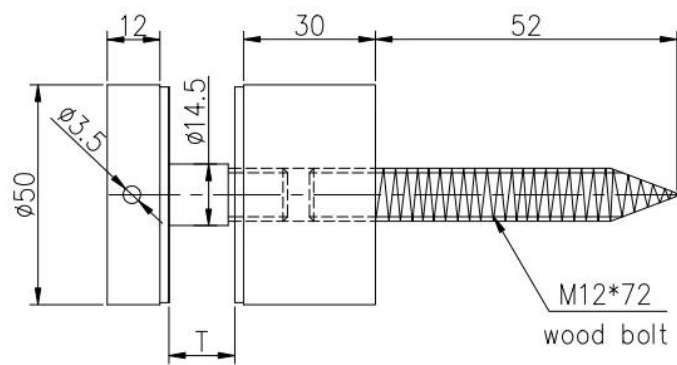


## Drawings

**For steel and concrete mounting** glass standoff drawing



**For wood substrate mounting** glass standoff drawing



## Project show

Standoff for indoor glass railing use



Standoff for outdoor balcony design



Standoff for stair case railing



### Packing & Delivery

- One piece into one plastic bag, then into one box. 15-20 boxes into one carton.
- Delivery time: 3-5 days by air. 10-15 days by sea
- Regular lead time: 7 days after payment if product are in stocks. 15-20 days after payment if products are not in stocks. It depends on quantity.



Need a quote or any questions, please leave a message.

Or contact me as below info. will get back to you as soon as possible!

For any urgent enquiry, please get in touch on wechat: 973219879 or what's up: +86 13530506265

**KEBIL 科比奧**

**深圳市朗驰商贸有限公司**  
SHENZHEN LAUNCH CO., LTD.

**朗驰国际有限公司**  
LAUNCH INTERNATIONAL LIMITED.

**董 萍** Doris Dong

Senior Sales Representative

☎ (86) 135 3050 6265

**深圳市南山区南山大道1092号亿利达大厦B区3栋5003**

Room 5003, Building 3, Yilida Building, No. 1092  
Nanshan Road, Nanshan District, Shenzhen, China  
postal code 518054

☎ (86-755) 8603 7559

☎ (86-755) 8637 2611

✉ sales04@launch-china.cn

🌐 www.launch-china.com

www.chinabalustrade.com