

## Matt Black Core Drill Spigots for Glass Balustrades

### Product Description

---

<b>Product Name</b>	Matt Black Core Drill Spigots for Glass Balustrades
<b>Material</b>	Duplex 2205 / stainless steel 316
<b>Standard</b>	Australian Standard <b>AS 1926.1-2012</b> : Safety Barriers for Swimming Pools
<b>Installation</b>	Core drill
<b>Finish</b>	Mirror polished / satin brushed
<b>For Glass Thickness</b>	8-13.52mm (NO hole required in glass)
<b>Height</b>	285mm, extra height is available by welding
<b>Base Cover Size</b>	100x100mm for square, diameter 100mm for round
<b>Mounting</b>	Surface/floor mounting
<b>Manufacture Method</b>	Casting (high quality)
<b>Packaging Details</b>	1) One piece into one bubble bag, then into one white box 2) 12 pieces into 365x330x230mm cardboard carton 3) Packing as customers' requirements
<b>Application</b>	Pool fence/balcony/deck/stairs glass railing
<b>MOQ</b>	10 pieces. Could order as per your job requirement.
<b>OEM &amp; ODM Service</b>	Available

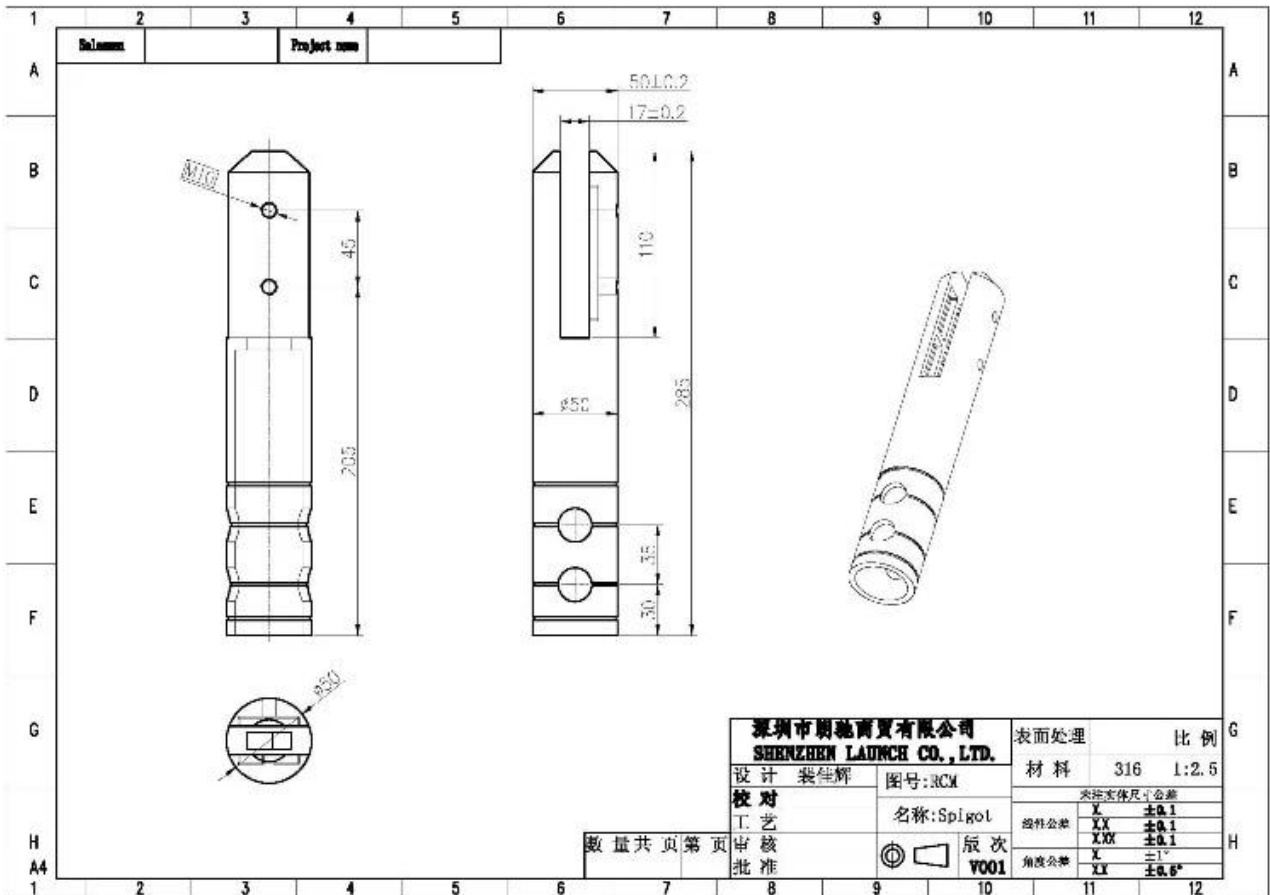
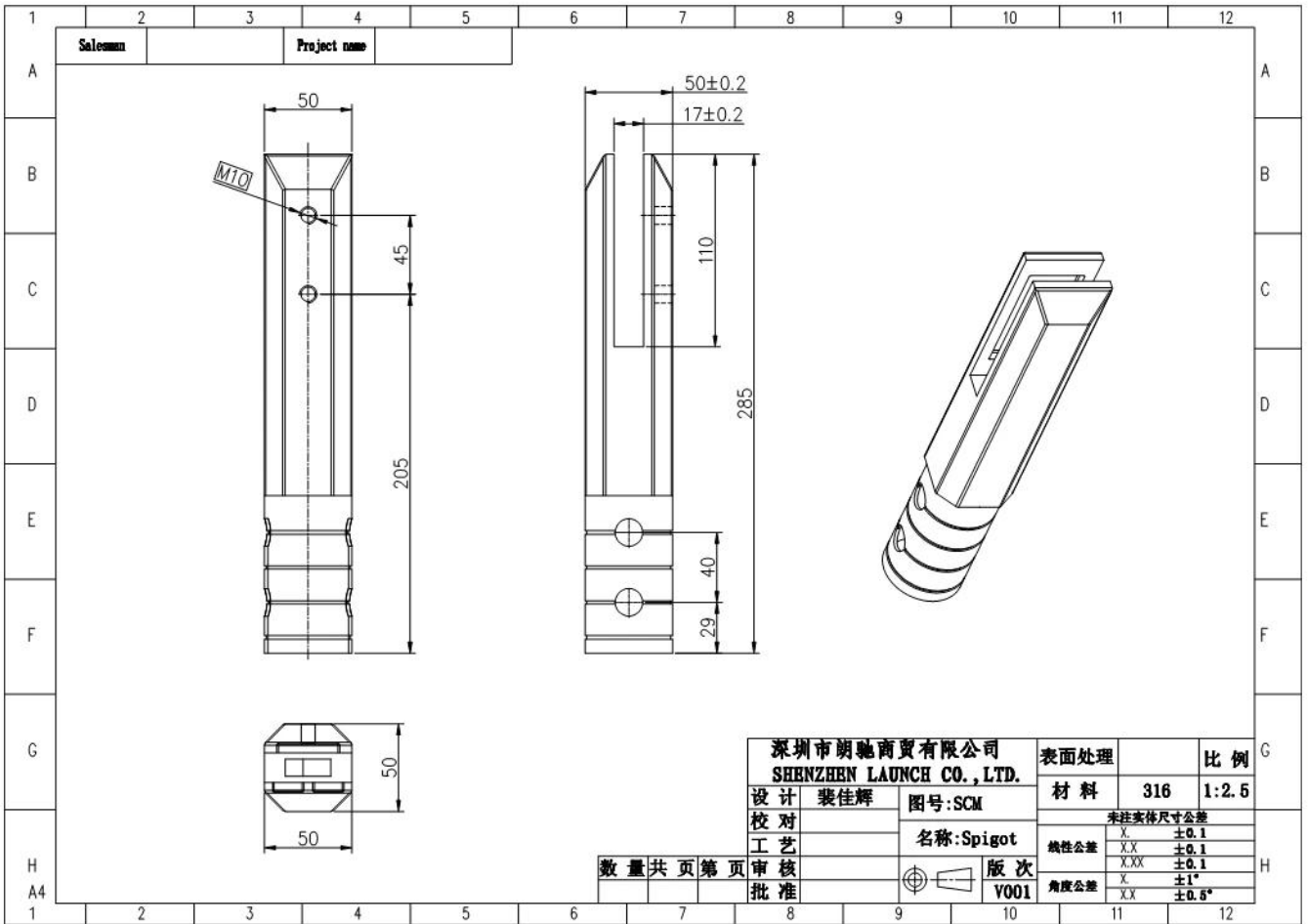
### Matt Black Core Drill Spigots for Glass Balustrades Details

---





1) Matt Black Core Drill Spigots for Glass Balustrades technical drawing



2) Matt Black Core Drill Spigots for Glass Balustrades pictures



**SCM**



**RCM**

**KEBIL** 科比奥®







**Glass Pool Fence Spigot Safety Packaging**

---



1. One piece into one bubble bag, then into one white box.  
12 pieces into 365x330x230mm cardboard carton.
2. Packing as customers' requirements.



## Glass Spigot Clamps Projects

---





## FAQ

---

### 1. what material do you have ?

SS304, SS316, SS316L, duplex 2205, ect.

### 2. Can you send me your whole price list ?

Sorry, as the price related to many factors, such as quantity, material type, surface treatment and so on, we will offer you exact quote after we confirm your detailed requirements.

### 3. Do you offer OEM & ODM service ?

Yes, we can make the products according to your technical drawings or samples. We are professional in investment casting, die casting, stamping, CNC machining, etc.

### 4. What kind of payment you accept ?

T/T, L/C, PayPal, West Union, etc.

### 5. What is your payment term ?

T/T (30/70) or L/C at sight.

### 6. What is your delivery time ?

Within 5 workdays for hot-sale items. 15-25 workdays for bath orders.

### 7. Do you offer after-sale service ?

Of course, any question after you purchase our products, we will get back to you within 24 hours.

## Contact

---

Any inquiries or questions, please leave a message. Will get back to you as soon as possible!

For any urgent enquiry, please get in touch below:

Contact: Eve Chow

Email: [sales03@launch-china.cn](mailto:sales03@launch-china.cn)

Mob/WhatsApp/WeChat: +8613686807796