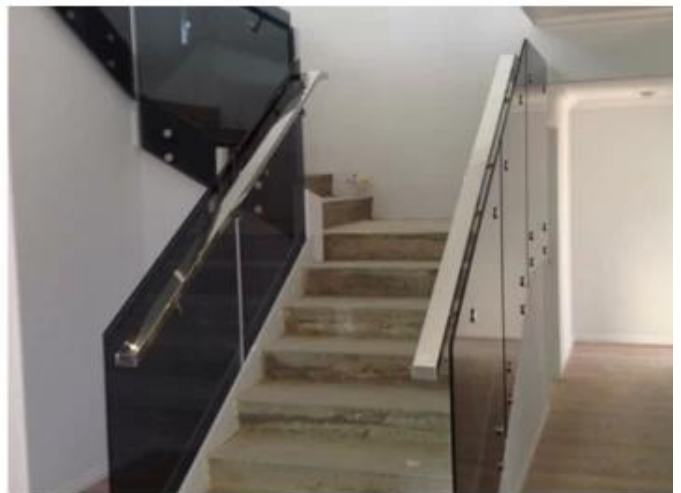


Our hot-sale glass stair railing designs:



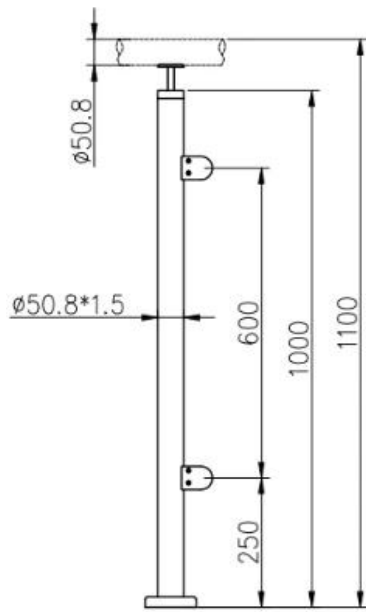
Modern Indoor Glass Stair Railing Banister Kits

| | | |
|---|-------------------|---|
| 1 | Material & Finish | Stainless steel 304/316; Satin or mirror finish |
| 2 | Height | 1000MM / Custom size |
| 3 | Stanchion Post | D50.8*1.5(mm) tube; 4 way adjustable top rail bracket; Square or Round Glass Clamp. |
| 4 | Top Rail | D50.8*1.5(mm) Hollow Tube |
| 5 | Security Railing | 10mm/12mm Tempered Clear Glass Panel |

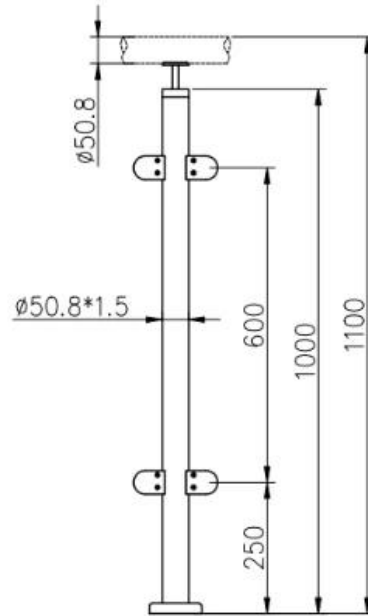
| | | |
|----|------------------|--|
| 6 | Usage & Location | Baluster, Balustrade, Banister, Fence, Handrail, Railings; Balcony, Bridge, Deck, Garden, Patio, Pool, Porch, Stair, Terrace |
| 7 | Installation | Top/Side mounted |
| 8 | Package | EPE+Inner box+Carton |
| 9 | Service | 1, Matchable accessories and fittings are provided ; 2, Construction planning; 3, Professional engineer advices; 4, Installation guiding; 5, OEM, ODM , Customer design; |
| 10 | Contact | EMAIL, SKYPE, WhatsApp, WeChat and QQ are shown as watermark on pictures below |



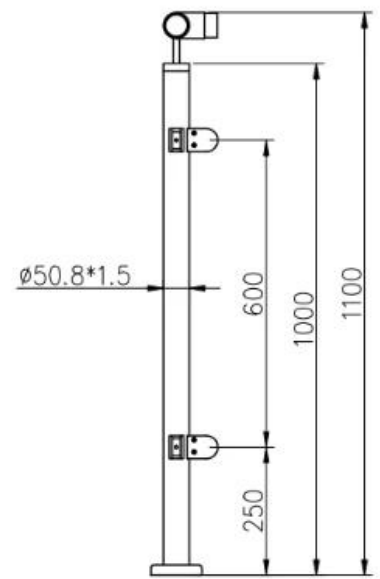
LCH-106



LCH-107

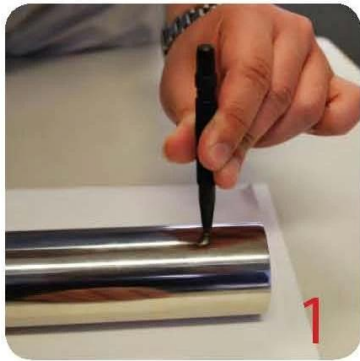


LCH-108



Installation:

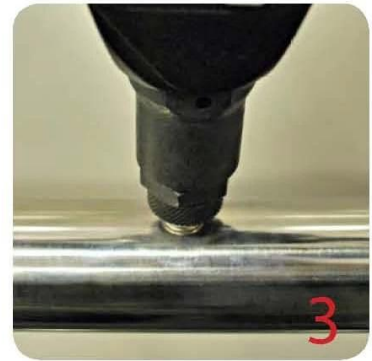
Glass Clamp Installation Guide



Mark and centre punch desired location of blind rivet nut location.



Drill centre punched hole in tube to suit blind rivet nut.



Insert blind rivet nut into tube and fasten with blind rivet tool.



Check installed blind rivet nut is secure and ready for install.



Align half glass clamp with blind rivet nut inline position. Screw in button head cap screw into thread and tighten with hex key.



Select appropriate rubber gasket to suit glass panel thickness. Install rubber gasket into both sides of glass clamp. (Note rubber gasket marked with sizes).



If heavier clamping load is required please use supplied glass clamp pin, during the install process. Note glass panels will require drilling in order to fit glass clamp pins.



Fit glass panel into position, install second half of glass clamp secure with provided hex screws.



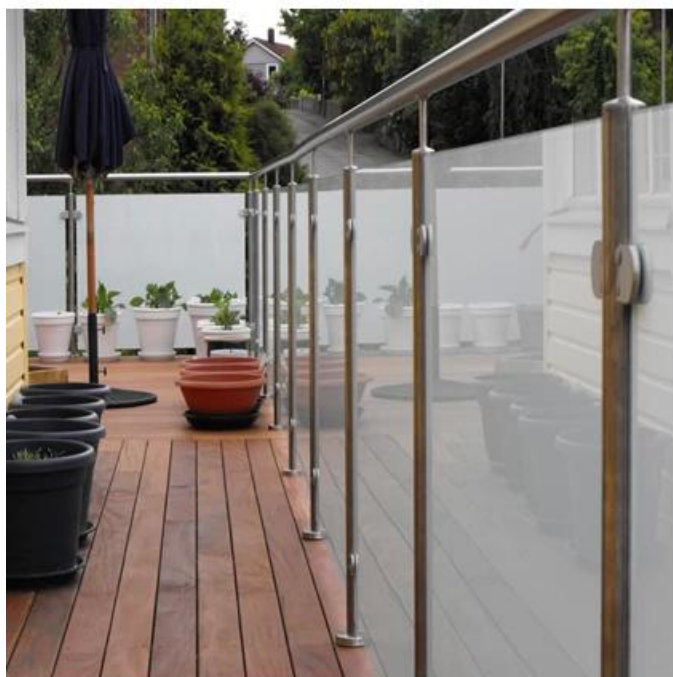
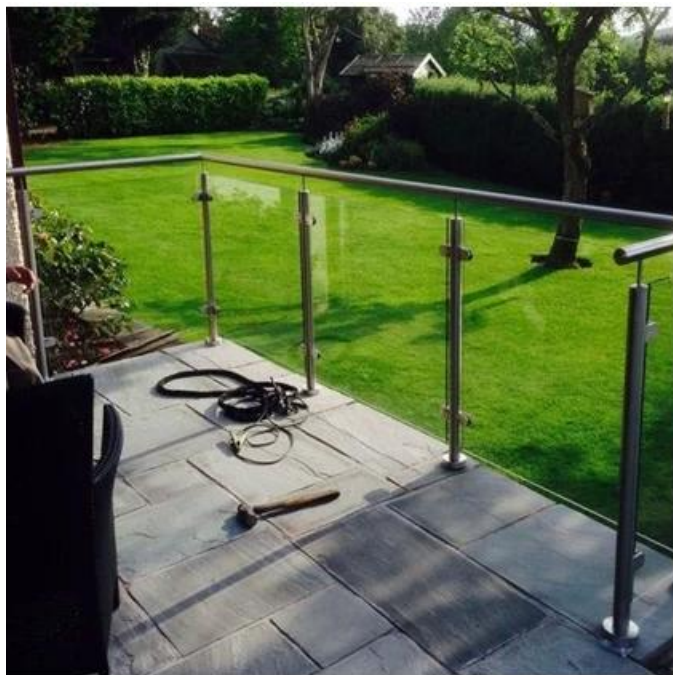
Tighten glass clamps with hex key, and check glass panel are secure with no movement.

Project show





For balcony railing designs:



Feel free to contact us:
Eve Chow
sales03@launch-china.cn
HP/WhatsApp: +8613686807796