

Stainless Steel 316L Top Mounted Rail Mini Profile Capping Rail

Mini capping rail is mostly widely used as top handrails around pool fencing areas or balcony or staircase. It's mini look makes the handrail look smart and elegant . We have square type and round type available, so do the whole set of fittings .

Specifications of top mounted mini capping handrail:

Material : stainless steel 316 /316L

Finish : satin or mirror polished

Round slot rail dimension : Dia 25.4mm , groove 14*14 mm , 5.8 meter per length

Square slot rail dimension : : 25*21mm , groove 14*14 mm , 5.8 meter per length

Fittings included : end cap (RD&SQ); straight 180 degree connector (RD&SQ); 90 degree connector (RD&SQ); wall to rail connector (RD&SQ)

Application : used as top handrail , around pool area, balcony, staircase etc

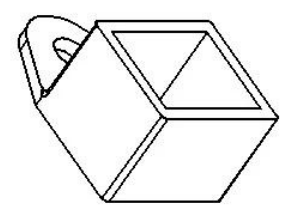
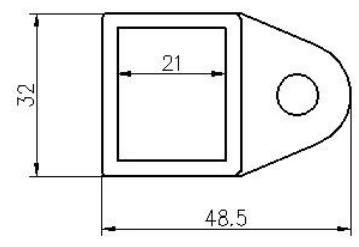
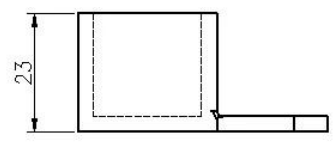
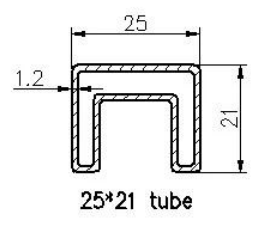
Product of slot handrail,square and round

Round type Top Mounted Rail Mini Profile Capping Rail:

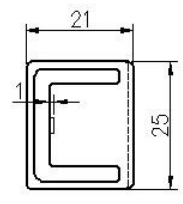
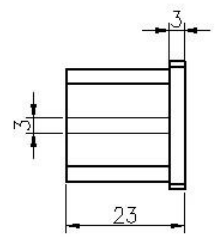




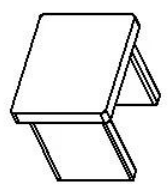
Square Type Top Mounted Rail Mini Profile Capping Rail:



MSQCW



MSQCAP



Fittings for Round Mini Top Rail:



Fittings for Square Mini Top Rail:



Projects Show for Slimline Top Rail:





Packing:



Company Information:

Shenzhen Launch Co., Ltd was established in 2004, located at Nanshan District, Shenzhen, and one hour by car from Hongkong International Airport. Our main product is high-grade building materials includes stainless steel balustrade post, staircase handrail, balcony guardrail, swimming pool fence and other high-grade building materials. All the products are designed strictly according to the high-end market requirements. We have our own factory in Tangxia Town, Dongguan, has a variety of precision equipment more than 50 sets: CNC lathe, milling machine, punching machine, pipe cutter, argon welder, drilling machine, polisher, etc. which can provide customers with complete product processing services. With the German SPECTRO Spectrometer, we insist on testing every batch of materials to ensure that the material is highly qualified. We also have hardness gauge, secondary element and other test equipment to ensure the products meets customers' requirements.

ABOUT US

Our Team



OUR ADVANTAGE

Please do not hesitate to contact us if you have any requirement regarding our production lines, you can expect a timely reply with professional solutions!



Own factory, shortest lead time.



Can help customers design product drawings based on customer ideas and design engineering installation drawing according to the customer site sketch.



Sample order, trial order acceptable.



Provide material test report to ensure that the material is qualified.



13 years of industry experience, we can help customers recommend the best solution to help customers save cost.

OUR FACTORY

More than 13 years experience in hardware industry design and processing, we can provide customized services from design to the sample and small batch trial production.



OUR CERTIFICATE

With premium quality, competitive price and superior service, we won a lot of customers' favor.

Our products are popular in North America, European and Australia.



PRODUCTION PROCESS



Casting



CNC lathe



CNC Milling



Stamping



Drilling & Tapping



Polishing

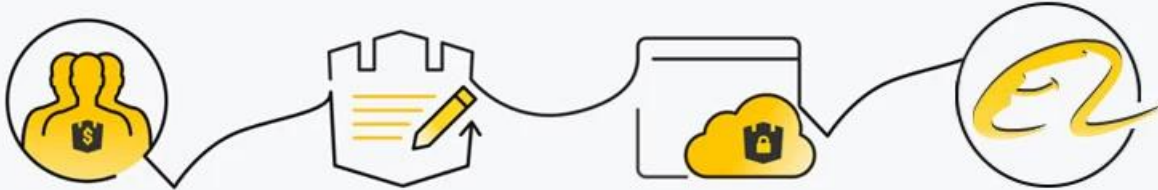


PACKAGING & DELIVERY



PAYMENT & TRANSPORTATION

Welcome Alibaba Trade Assurance Order!



1 Start an order

2 Negotiate terms with our sales service & confirm order

3 Make payment

4 Alibaba provide full assurance



FAQ

1. Are you factory?

Yes, we are factory.

2. Do you offer free samples?

Yes, we offer free samples, but customers need to pay express charges.

3. What materials do you have?

We have the material of stainless steel 304, 316, 316L and Duplex 2205.

4. What is your MOQ?

MOQ of order required is 1 pc.

5. What kind of payment do you accept?

We accept the payment of T/T, LC, PayPal, West Union, etc.

6. What is your payment term?

Our payment term is T/T(100% or 30/70)or LC at sight .

7. What is your delivery time?

Our delivery time is from 5days to 30days base on your quantity.

8. Do you offer OEM & ODM service?

Yes we offer OEM&ODM service.

9. Do you offer after-sales service?

Yes, we offer after-sales service. Any complaint for orders will be dealt with in time within 12 hours.

Contact us:

Email: sales03@launch-china.cn

HP/WhatsApp/WeChat: +8613686807796