

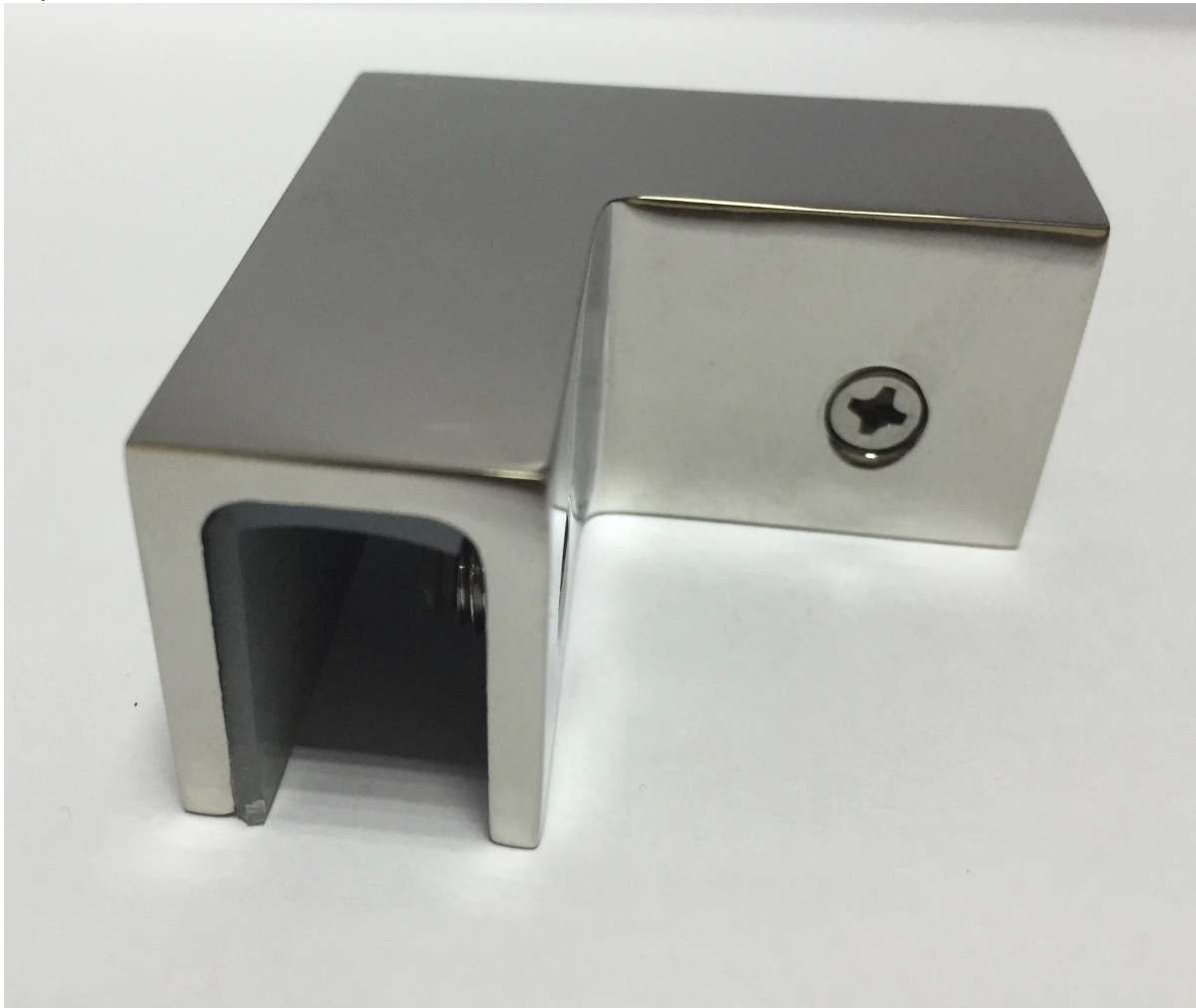
Description

- Made of stainless steel 316 (stainless steel 304 is available)
- For 8-12mm glass
- For use in 90 degree corner tempered glass design
- Gasket is included

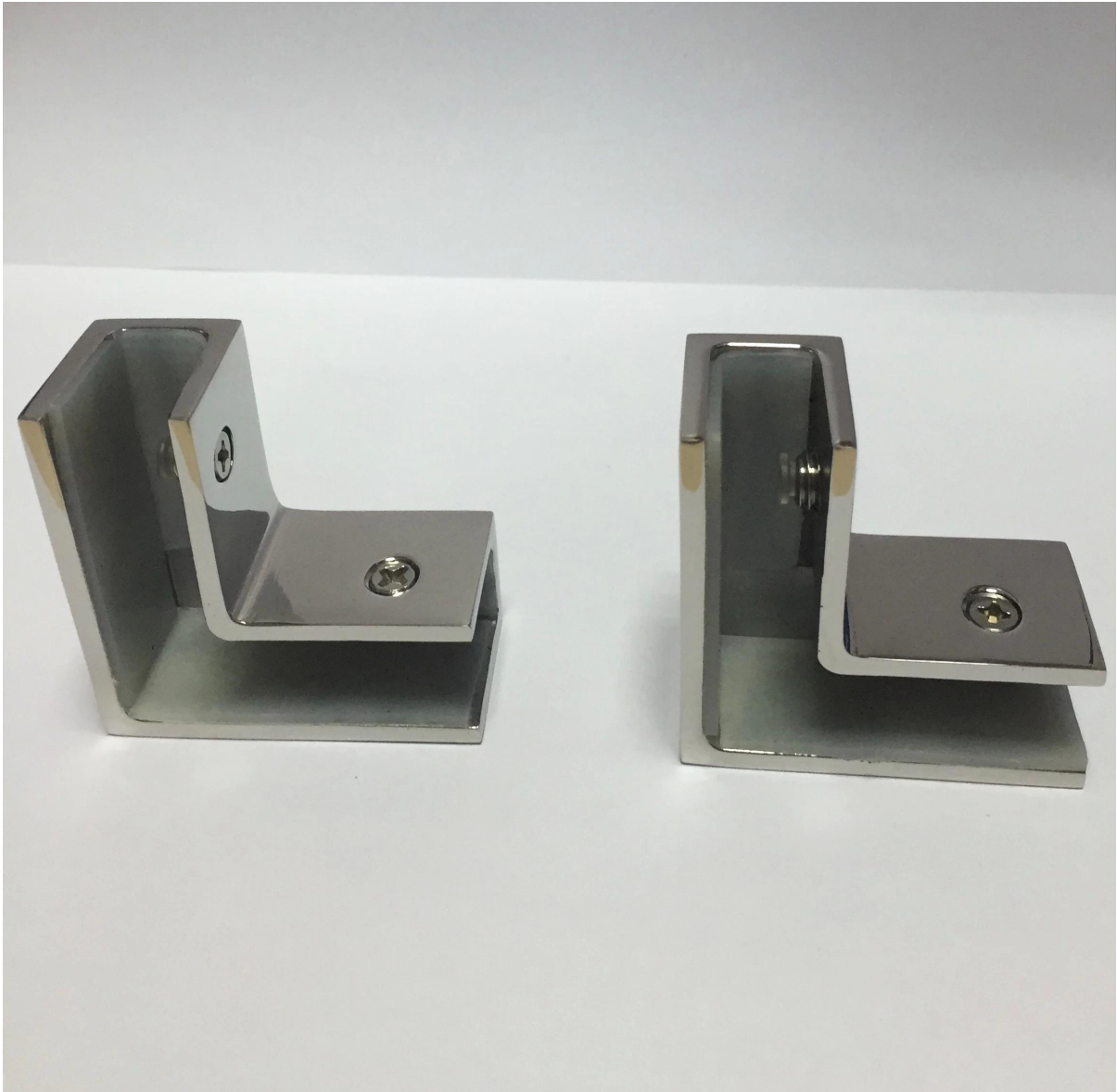
For big size corner clamp, go [HERE](#)

[Glass clamp CB-90](#) details

Top view



Bottom view



Project





Delivery & Packing

--Delivery time: 5-7 days by air. 15-20 days by sea.

--Packaging: one pc into one plastic bag. 10 pcs into one box.

--Regular lead time: 7 days if products are in stock. About 20 days if products are not in stock. It depends on quantity.

Need a quote or any questions, please leave a message.

Or contact me as below info. will get back to you as soon as possible!

For any urgent enquiry, please get in touch on wechat: 973219879 or what's up: +86 13530506265



董 萍 Doris Dong

Senior Sales Representative

☎ (86) 135 3050 6265

深圳市南山区南山大道1092号亿利达大厦B区3栋5003

Room 5003, Building 3, Yilida Building, No. 1092
Nanshan Road, Nanshan District, Shenzhen, China
postal code 518054

☎ (86-755) 8603 7559

☎ (86-755) 8637 2611

✉ sales04@launch-china.cn

🌐 www.launch-china.com

www.chinabalustrade.com