

Description

- For 10-12mm tempered glass
- Handrail diamention: 25x20mm, groove 14x14mm, 5.8 meter per length or as per your requirement, 1.2mm thick
- Net weight: 6kg/5.8m
- Plastic channel:2.9m per length or as per your requirement
- Finish: 8K polish /satin
- For both commerical and modern house home design
- For both wholesale and retail (We are factory)
- Application:balcony railing handrail, deck glass railing, staircase railing, frameless glass railing,glass balustrade
- Sample: always available

A set of handrail tube and fitting

20*25mm slot handrail

5.8 m per length



180 degree joiner



90 degree joiner



Vertical adjustable joiner



Horizontal I adjustable joiner



Wall to handrail joiner



End cap



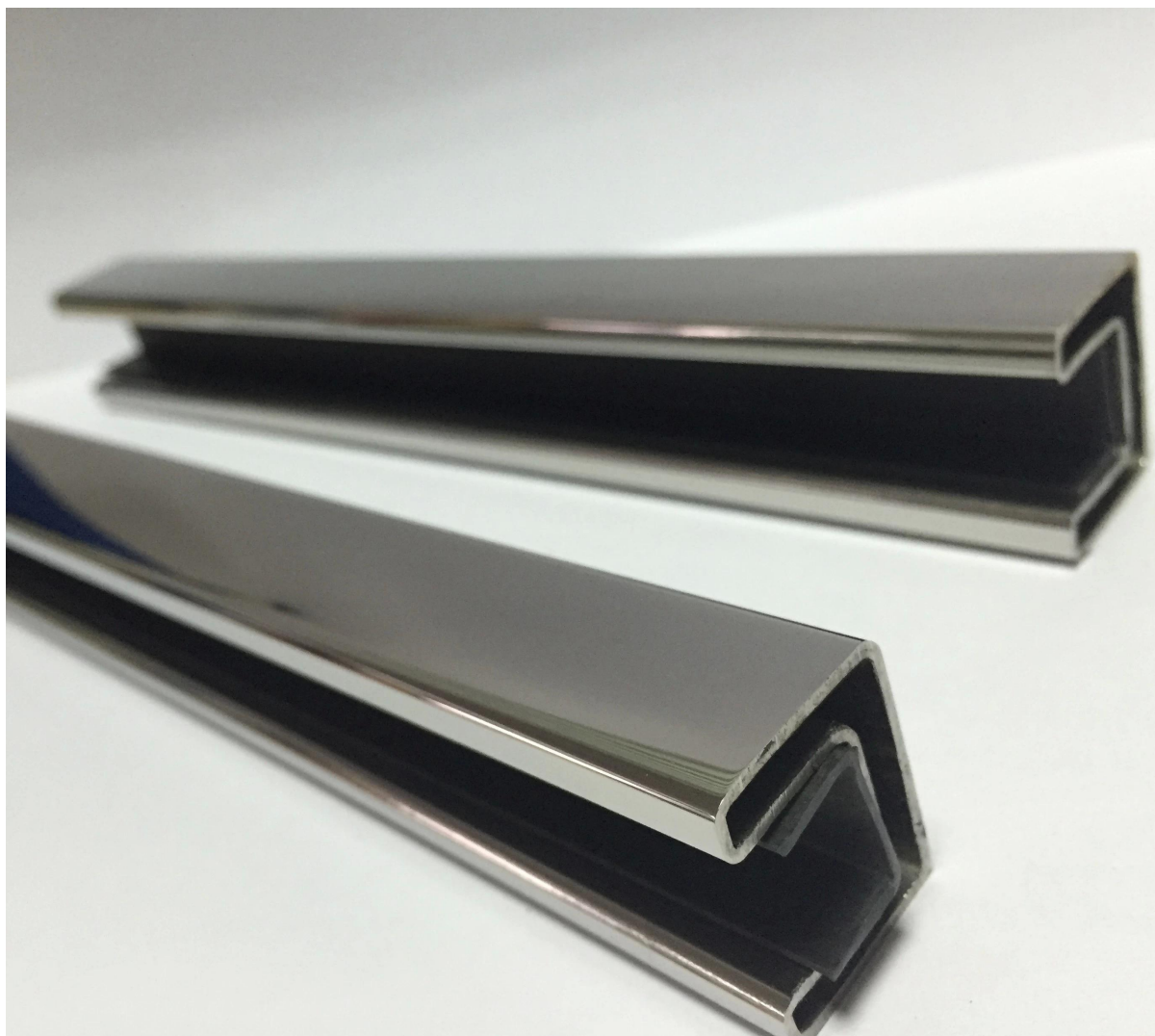
Details













Project
[Glass spigot](#)+slot handrail design



For more beautiful project photos, go [HERE](#)









Packaging & Delivery

Safe cardboard sleeve package







packing	plastic bag+box+carton
production lead time	30-45 days ; also depending on your qty.
Shippment	 
	 
	 
payment	 

Factory&Certification









Shenzhen Launch Co.,Ltd



www.launch-china.cn

Customers



Why choose Launch--advantages

1. Various ranges of items for your selection
2. Provide professional services (3D & AUTOCAD)
3. Special designs by customer can be made
4. Competitive price with good discount
5. Superb quality control, production inspected one by one
6. Timely delivery, usually within a month
7. Good service before, during and after sales
8. OEM, ODM available

Thank you for visiting!

Need a quote or any questions, please leave a message, will get back to you ASAP!

Or contact me as below info.



深圳市朗驰商贸有限公司
SHENZHEN LAUNCH CO., LTD.

朗驰国际有限公司
LAUNCH INTERNATIONAL LIMITED.

董 萍 Doris Dong

Senior Sales Representative

☎ (86) 135 3050 6265

深圳市南山区南山大道1092号亿利达大厦B区3栋5003

Room 5003, Building 3, Yilida Building, No.1092
Nanshan Road, Nanshan District, Shenzhen, China
postal code 518054

☎ (86-755) 8603 7559

☎ (86-755) 8637 2611

✉ sales04@launch-china.cn

💻 www.launch-china.com

www.chinabalustrade.com