

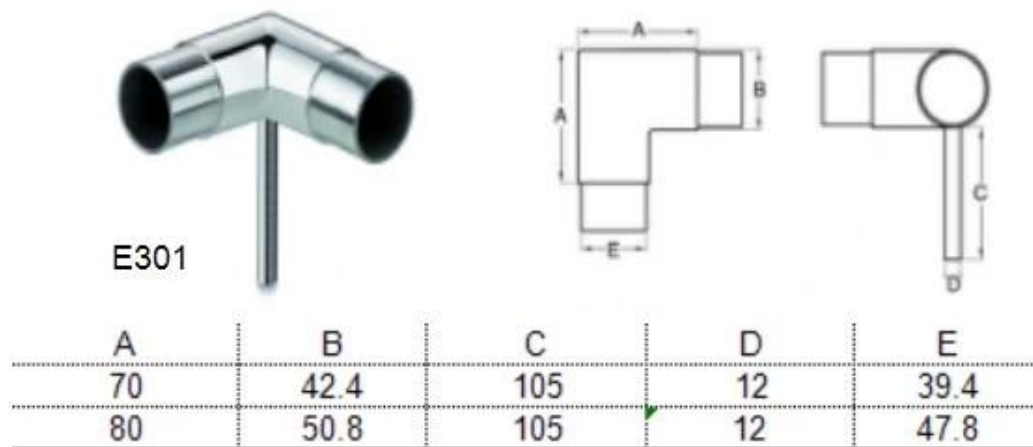
Description

- Made of stainless steel 304/316
- Finish: polished/brushed
- For diameter 43mm and diameter 50.8mm round tube, 1.3-1.5mm thick tube
- Customer size connectors available (Minimum order quantity: 100 pieces)

Tube connector details

Tube connector **E301**

Connects to diameter 43mm and diameter 50.8mm, 1.3-1.5mm thick tube



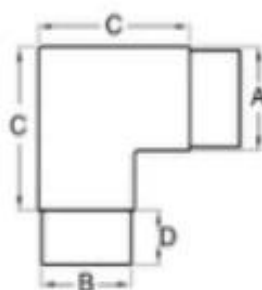


Tube connector **E302**

Connects to diameter 43mm and diameter 50.8mm, 1.3-1.5mm thick tube



E302



A	B	C	D
42.4	39.4	70	30
50.8	47.8	80	27

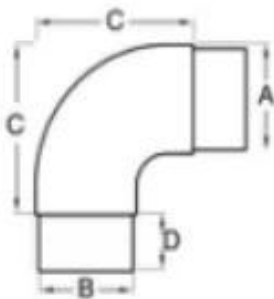


Tube connector **E303**

Connects to diameter 43mm and diameter 50.8mm, 1.3-1.5mm thick tube



E303



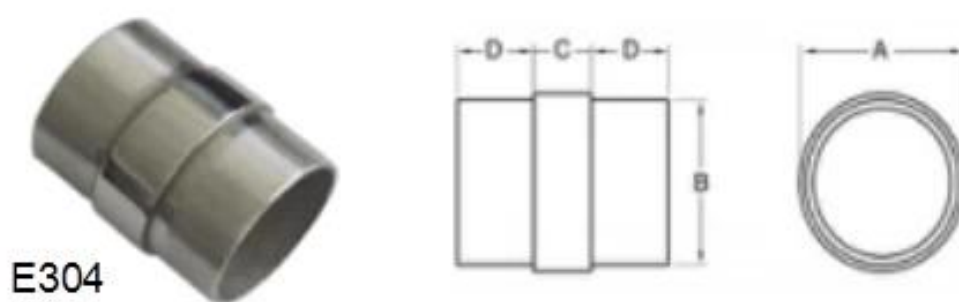
A	B	C	D
42.4	39.4	65	25
50.8	47.8	80	26



2013/05/05

Tube connector **E304**

Connects to $\phi 12\text{mm}$, $\phi 20\text{mm}$, $\phi 38\text{mm}$, $\phi 43\text{mm}$, $\phi 50.8\text{mm}$ round tube, 1.3-1.5mm thick tube

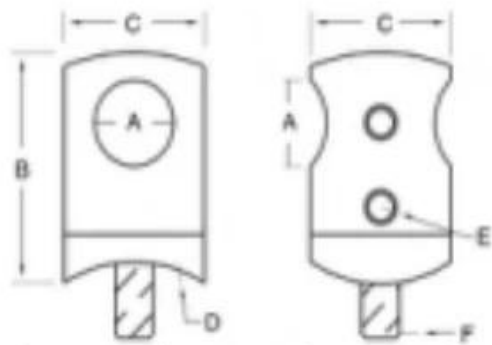


E304

A	B	C	D
12	10	10	10
20	17	10	15
38	35	10	25
42.4	39.4	10	25
50.8	47.8	10	25



Cross bar holder



		Description:		The support to hold the bar of railing.			
		描述:		这些支撑件用来支撑扶手横杆.			
新编号	旧编号	A	B	C	D	E	F
B502	F-22/12	12	32	22	R-21.5	M5×5	M6×20
B502F	FP-22/12	12	32	22	R-0	M5×5	M6×20

**Delivery & Packaging**

- Delivery: 3-5 days by air. 10-15 days by sea
- Packing: one piece into one plastic bag, 3 pieces into one box.
- Regular lead time: 3-5 days if goods are in stock. 15-20 days if goods are not in stock. (It depends on quantity)



Need a quote or any questions, please leave a message.

Or contact me as below info. will get back to you as soon as possible !

For any urgent enquiry, please get in touch on wechat: 973219879 or what's up: +86-13530506265



董 萍 Doris Dong

Senior Sales Representative

☎ (86) 135 3050 6265

深圳市南山区南山大道1092号亿利达大厦B区3栋5003

Room 5003, Building 3, Yilida Building, No.1092
Nanshan Road, Nanshan District, Shenzhen, China
postal code 518054

☎ (86-755) 8603 7559

☎ (86-755) 8637 2611

✉ sales04@launch-china.cn

🌐 www.launch-china.com

www.chinabalustrade.com