

## Straight glass clamp for 8-12mm tempered glass BC-80x35

Material: stainless steel 304/316

For glass thickness: 8-12mm

Size: 80x35mm or customized size;

Thickness: 5mm;

Middle bolt: M6 or M8;

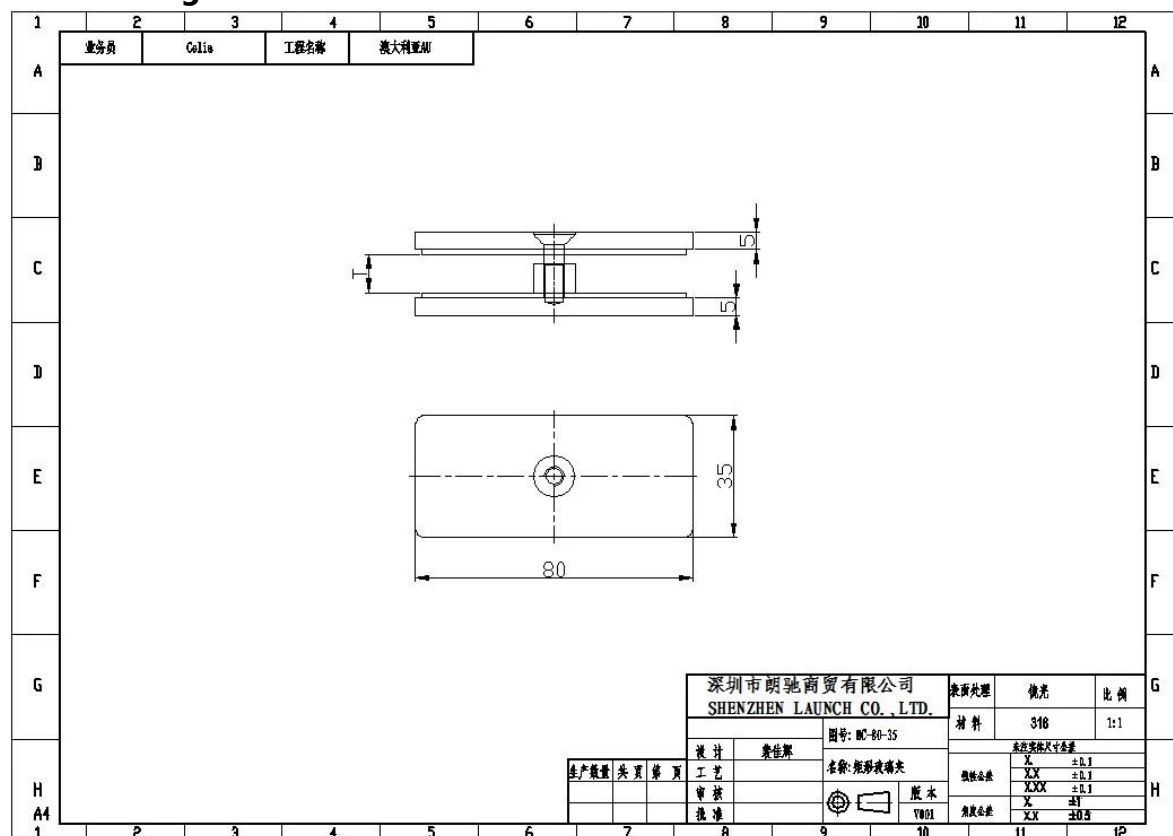
Surface treatment: mirror polished;



Satin brushed



**Size drawing:**



BC-80\*35 is used between the 2 glass panel, to make connection of them.  
More stable and safer;

Please see the project as below:

Staircase glass railing with standoff bracket **SF-50**



Overall view



This glass clamp is widely used at frameless glass balustrade especially for staircase, deck, balcony and so on, not only commercial but also domestic project.

Project design is fine for us, please send us more details about your project to:

**[sales04@launch-china.cn](mailto:sales04@launch-china.cn)**