

Wholesale Stainless Steel White Powder Coating Glass Clamp for 1/2" Glass

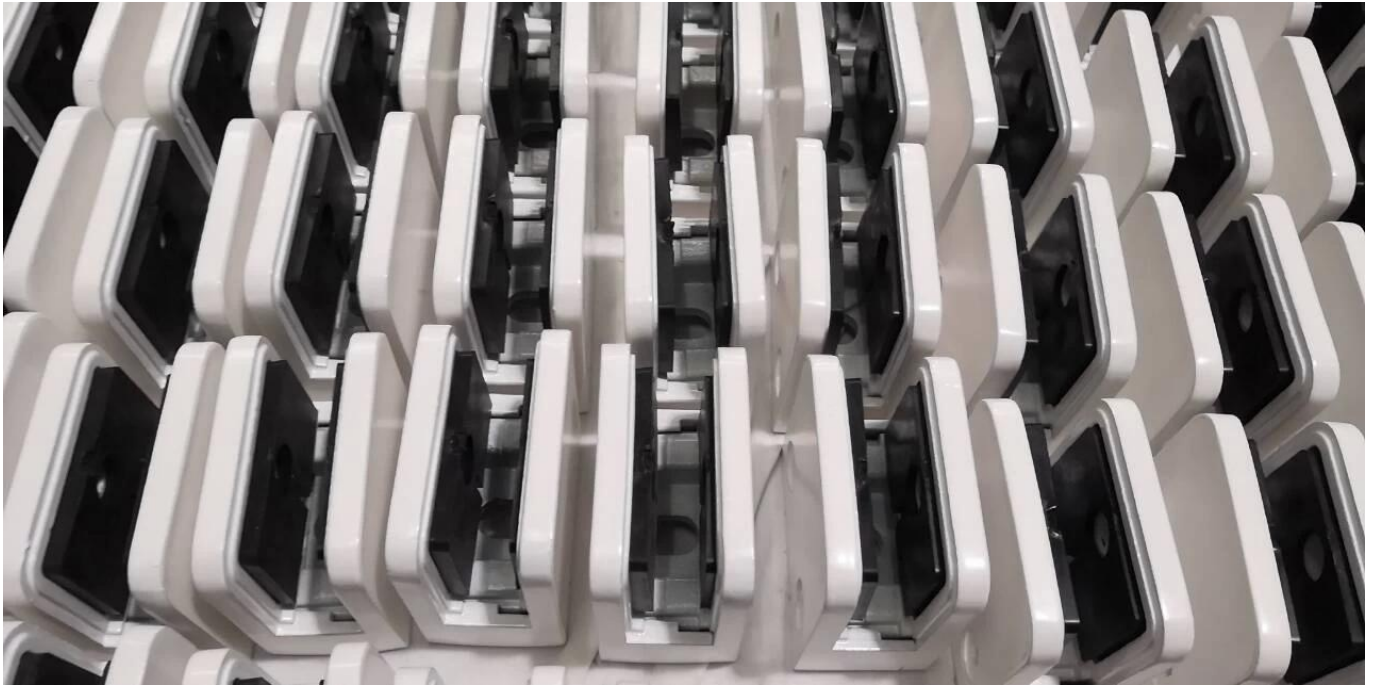
Product Description

Product Name	Wholesale Stainless Steel White Powder Coating Glass Clamp for 1/2" Glass
Material	Stainless steel 304 or 316
Finish	Powder coating (white/black/gray or customer's color)
Glass clamp type	Flat back and radius back both available
For Glass Thickness	10-12mm glass or customer's requirement
MOQ	100 pieces
Installation	Flat wood/steel/wall surface or radius handrail post
Application	Balustrade glass railing for balcony/deck/stairs...
Insert rubber	Included
Sample	Available to check quality before order
Factory Inspection	Available
Safety Packaging	Bubble bag - cardboard box - carton
Certified	Yes (Material test report can be provided)
OME & ODM Service	Available

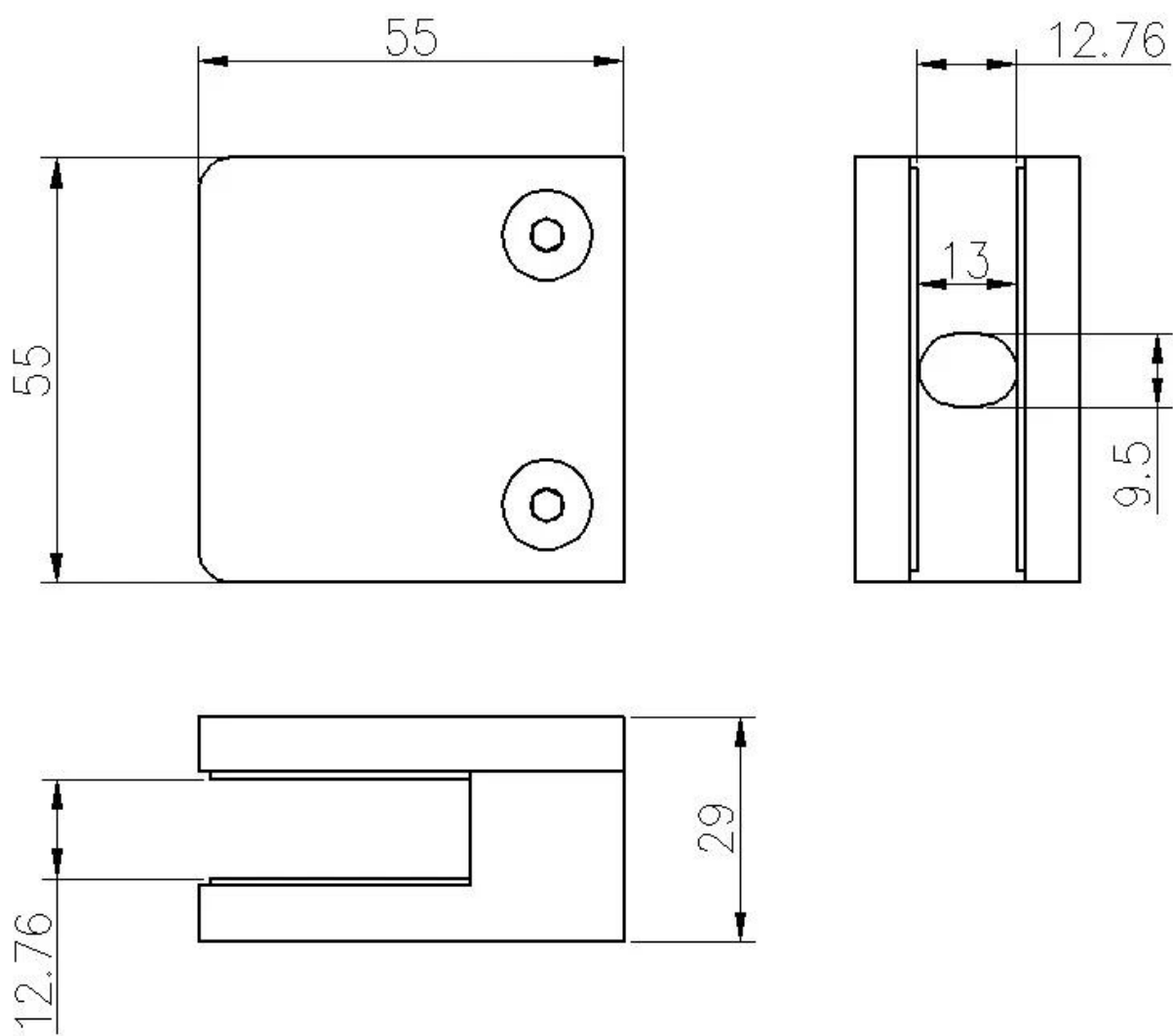
Glass Clamp Details

White powder coating finish

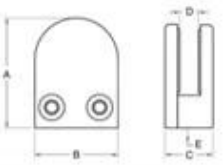




Glass clamp dimension



Other dimension glass clamp available.(Customized glass clamp is available.)

Specifications of all glass clamps in our company							
Drawing	Picture	Ref.	A	B	C	D	E
		G108	55	55	30	11	0
		G108R	58	55	30	11	R25.4
		G101	51	41	25	11	0
		G101R	55	41	25	11	R21.5/R25.4
		G102	44	44	25	11	0
		G102R	48	44	25	11	R21.5/R25.4
		G103	50	40	22	8	0
		G104	50	40	26	12	0
		G105	54	45	28	14	0
		G107	63	45	28	14	0
		G103R	52	40	22	8	R21.5
		G104R	52	40	26	12	R21.5
		G105R	58	45	28	14	R21.5/R25.4
		G107R	66	45	28	14	R21.5/R25.4
		G106	50	40	25	12	0
		G106R	52	40	25	12	R21.5/R25.4

Other finish glass clamp you may interest.

1.Electroplated black finish glass clamp - *mirror polished finish*



Electroplated black finish glass clamp - *matte finish*



2.New design timber look glass clamp



Glass Clamp Project







Glass Clamp Packaging

1. Bubble bag - cardboard box - carton
2. Or packing as customers' requirements.



FAQ

1.Are you factory?

Yes, we are factory.

2.Do you offer free samples?

Yes, we offer free samples, but customers need to pay express charges.

3.What materials do you have?

We have the material of stainless steel 304, 316, 316L and Duplex 2205.

4.What is your MOQ?

MOQ of order required is 1 pc.

5.What kind of payment do you accept?

We accept the payment of T/T, LC, PayPal, West Union, etc.

6.What is your payment term?

Our payment term is T/T 100% or 30/70 or L/C at sight .

7.What is your delivery time?

Our delivery time is from 5 days to 30 days based on your quantity.

8.Do you offer OEM & ODM service?

Yes we offer OEM&ODM service.

9.Do you offer after-sales service?

Yes, we offer after-sales service. Any complaint for orders will be dealt with in time within 12 hours.

Contact

Any enquiries or questions, please leave a message. Will get back to you within 24 hours!
For any urgent enquiry, please get in touch as below:

-Email: sales04@launch-china.cn
-Office: (86-755) 8603 7559
-Skype: launch_04
-Mob/whats APP: +86-1353050626