

Frameless glass pool fence spring loaded stainless steel glass hinge , heavy duty hinge .

Features of stainless steel glass hinge-

- Spring loaded type
- Model G-G
- glass to glass hinge
- for 8mm -12mm thickness glass gate
- stainless steel 316
- 1 pair = 2 pcs
- need glass holes as per hole drawing

Photos of glass hinge , G-G

**KEBIL** 科比奥®



Glass to round post hinge



Glass to wall hinge



Glass hinge with flat end caps-





Stainless steel glass hinge drawing-

## Spring loaded hinges

Stainless steel spring loaded hinges

-Made of SS 316

- For use of 8-12.76mm glass

Maximum door leaf weight : 30 kg /pair

Maximum door leaf width : 900mm

Spring can be adjusted for closing speed control .



Part # G-G



Part # G-R

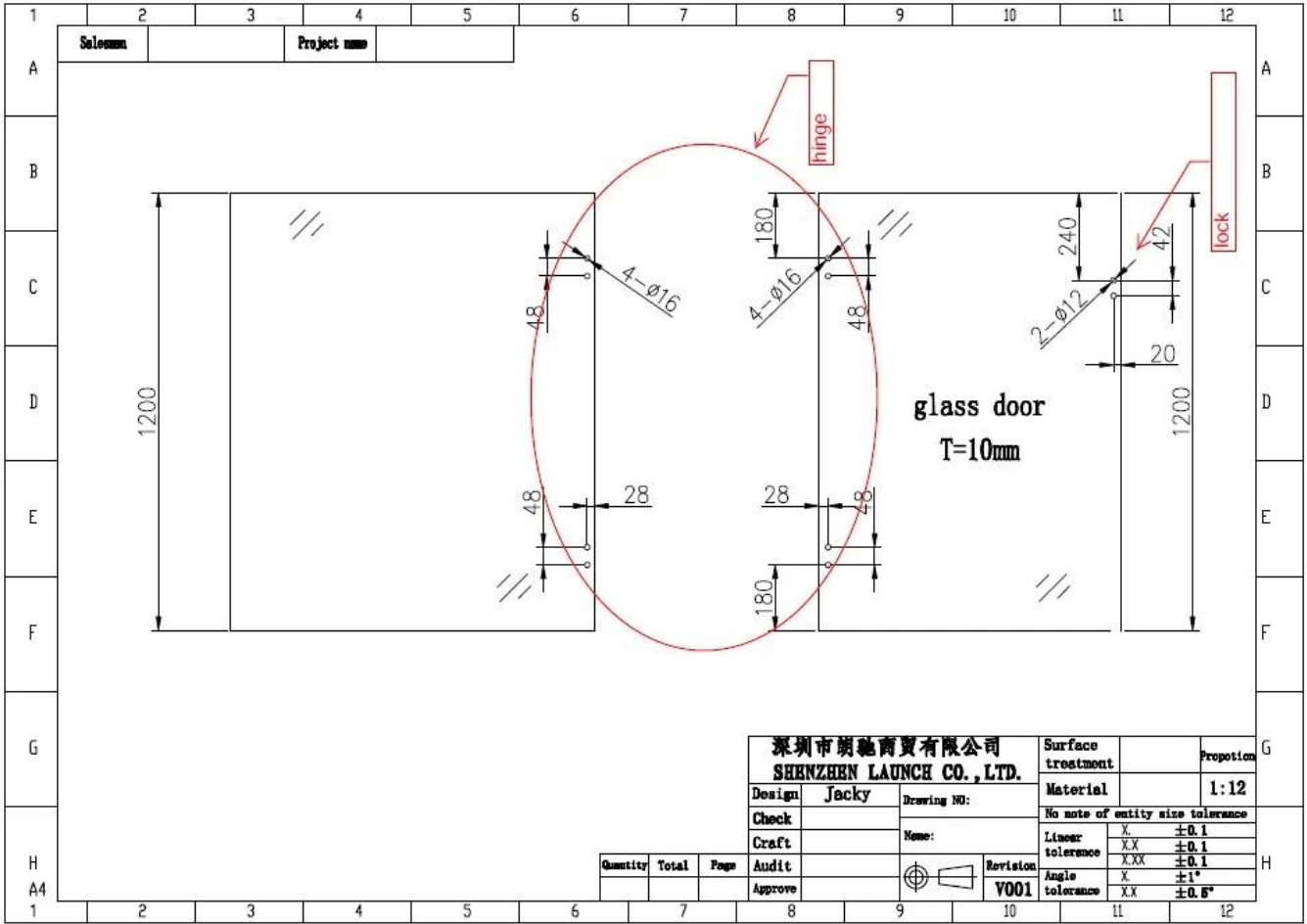


Part # G-W

SHENZHEN LAUNCH CO., LTD

1

Glass holes drawings required for glass hinge and glass latch-



project drawings of glass pool fence -

