

glass balustrade aluminum u channel modern design for balcony railing pool fencing

1. Aluminum U channel profile specifications ,

-- Material: Aluminum 6063T5

-- For 10-12mm thickness glass

-- Dimension: 35x80mm, slot channel: 15x70mm

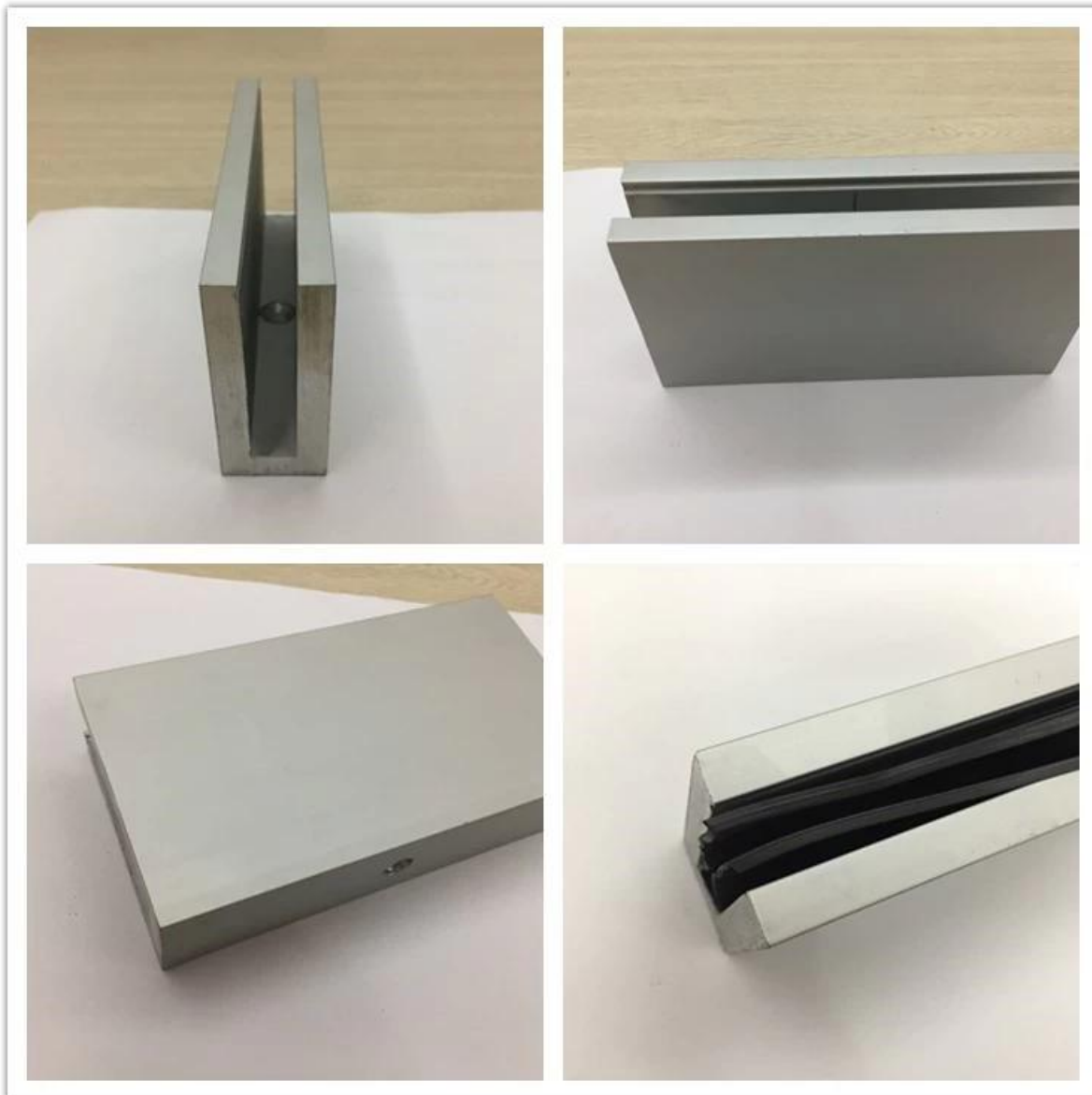
-- Aluminum channel wall thickness: 10mm

--Floor mounting base aluminum U channel (Floor can be wood and concrete)

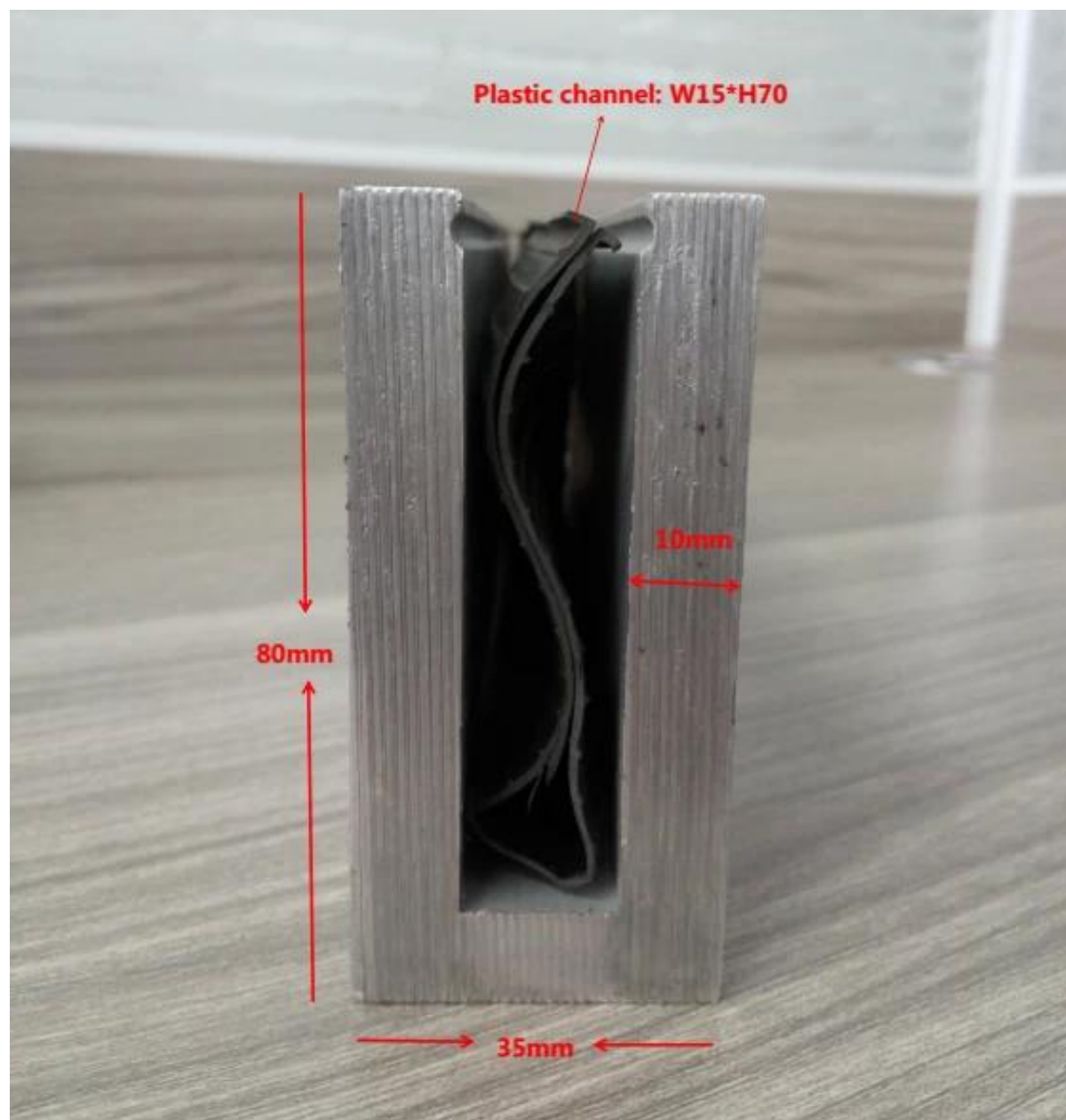
--Application: pool fence, balcony frameless railing, deck glass railing, garden fencing, staircase frameless aluminum glass railing, aluminum railing system, aluminum U channel balustrade, aluminum railing

--For both commercial and modern house home design

--For both wholesale and retail (We are factory)









2. Aluminum u channel glass railing project .





3. For top mounting diameter 50.8mm slot tube, you can refer to :
[stainless steel 316L diameter 50.8mm stainless steel round slot tube](#)



Thanks for your visiting, Any interested, please contact with me

freely :

Email: sales05@launch-china.cn .