

glass railing design stainless steel 316L rectangular groove tube handrail

1. Stainless steel tube specifications :

Material: Stainless steel 304 or 316L

Finish: Mirror polished or satin

SWIMMING POOL FENCING HARDWARE

KEJIL 科比奧
SHENZHEN LAUNCH CO., LTD

STAINLESS STEEL HANDRAIL TUBE

Round tube	
Material	Stainless steel 304L/316L
Finish	Satin or mirror
Sizes	Ø 38.1 x 1.5 mm Ø 42.4 x 1.5 mm Ø 50.8 x 1.5 mm



Square tube	
Material	Stainless steel 304L/316L
Finish	Satin or mirror
Sizes	38 x 38 x 1.5 mm 40 x 40 x 1.5 mm 50 x 50 x 1.5 mm



Rectangular tube	
Material	Stainless steel 304L/316L
Finish	Satin or mirror
Sizes	50 x 10 x 1.5 mm 50 x 25 x 1.5 mm

STAINLESS STEEL SLOT HANDRAIL TUBE

Round slot tube	
Material	Stainless steel 304L /316L
Finish	Satin or mirror
Sizes	Ø 38 x 1.5 , 15x15mm single slot Ø 42x1.5 mm , 15x15mm / 24x24mm single slot Ø 50.8x1.5 mm , 15x15mm single slot



Square slot tube	
Material	Stainless steel 304L /316L
Finish	Satin or mirror
Sizes	- 31.8x31.8x1.5 , 15x15 mm single slot - 40x40x1.5 , 15x15 mm / 20x20mm single slot - 50x25x1.5 , 15x15mm single /double slot

#1 Single Slot Pipe





#2 Double Slot Pipe , 2 way 180 degree :



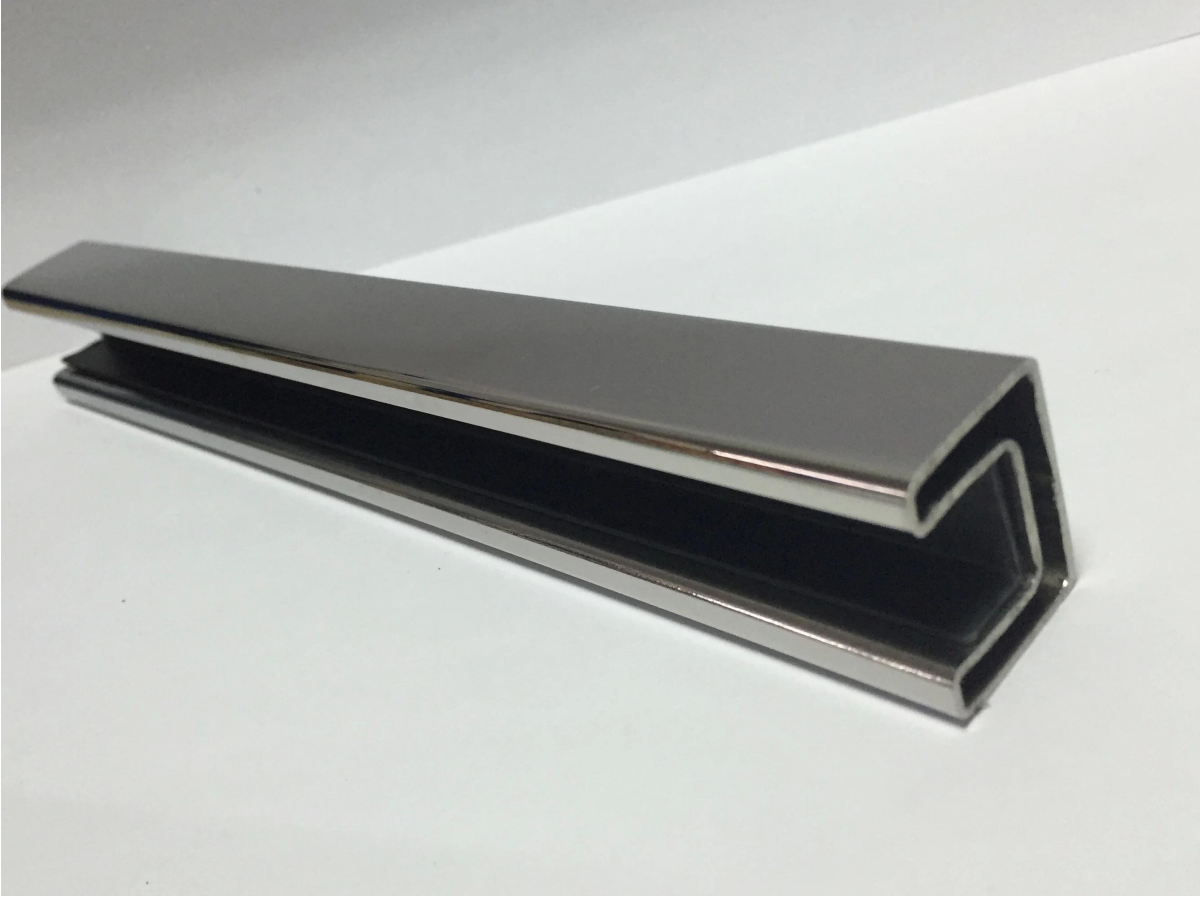
#3 Double Slot Pipe , 2 way 90 degree :



#4. 40 x 40 x 1.5mm, 15 x 15mm/20 x 20mm single slot tube :



#5. 20 x 25 x 1.2mm, 14 x 14mm single slot tube :

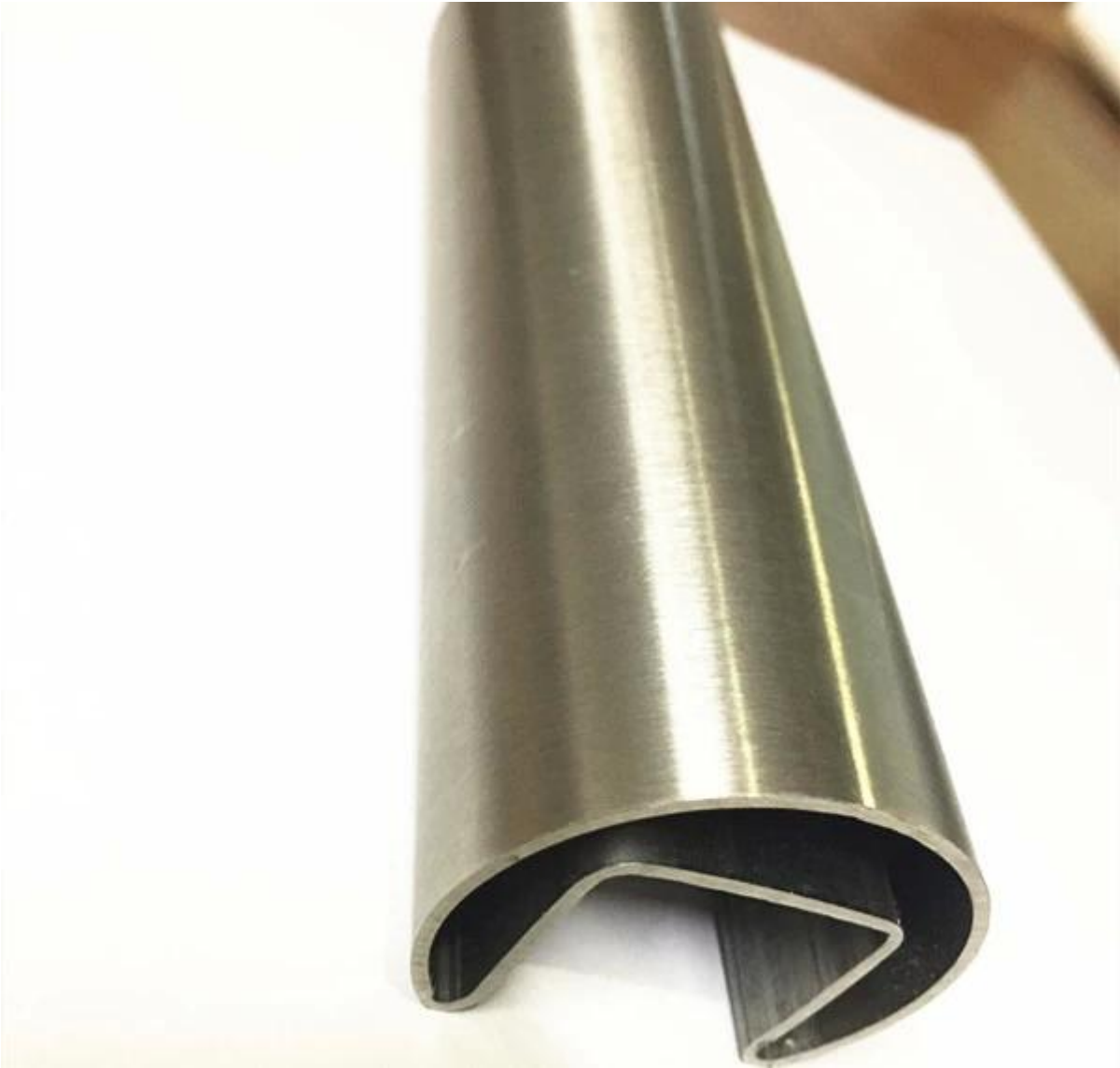


#5. Diameter 25.4 x 1.2mm, 14 x 14mm single slot tube :



#6. Diameter 31.8 x 1.5mm, 15 x 15mm single slot tube :





3. Package :

Inner plastic film package ,



Outer bubble bag film package.

