

pool fencing spring loaded stainless steel 316 glass door hinge

1. Pool fencing spring loaded stainless steel 316 glass door hinge description:

- 1.Material: stainless steel 316
- 2.Finish: satin or mirror polished
- 3.Glass to wall / square post model G-W2
- 4.180 degree glass to glass model G-G2
- 5.Glass to round post model G-R2
- 6.Suitable for 8-10mm thickness glass

[2. Model No. G-G2, glass to glass hinge.](#)



G-G2

[3. Model No. G-W2, glass to square post / wall hinge.](#)



G-W 2

[4. Model No. G-R2, glass to square post / wall hinge.](#)

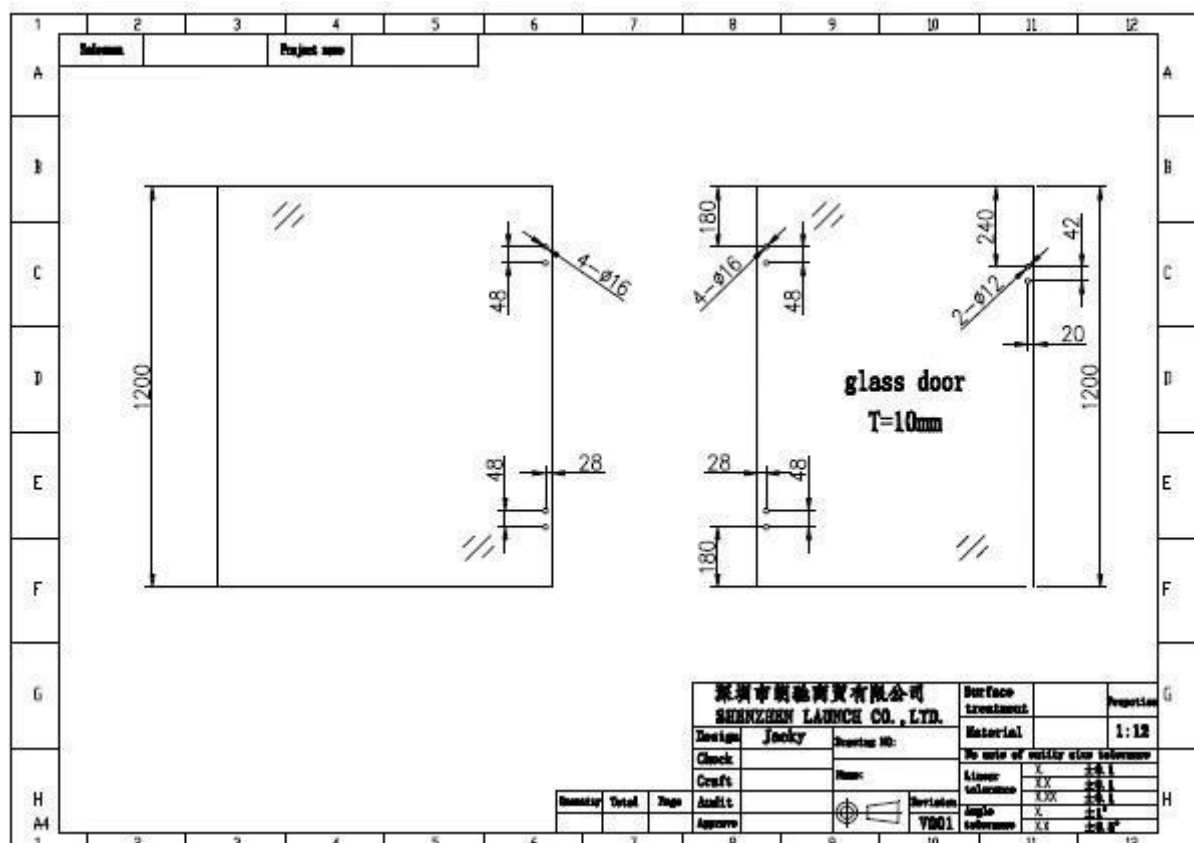


G-R2

[pool fencing spring loaded stainless steel 316 glass door hinge installed.](#)

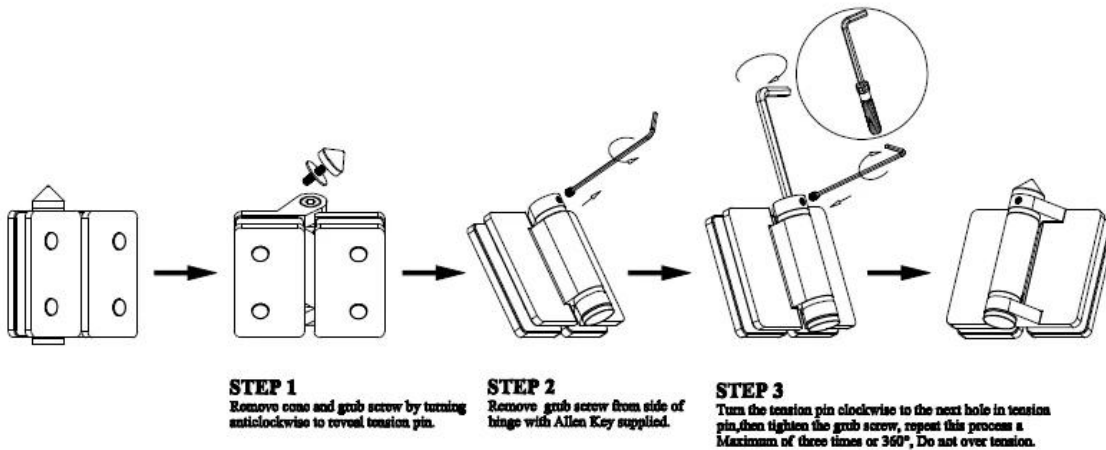


[pool fencing spring loaded stainless steel 316 glass door hinge standard glass panel holes position drawing.](#)



[pool fencing spring loaded stainless steel 316 glass door hinge install instruction.](#)

Instructions for adjusting tension on Glass to Glass hinge



Thanks for your visit, Any interested or needs, please contact with me freely :

Joey Lan

Shenzhen Launch Co., Ltd

www.launch-china.com www.chinabalustrade.com

Email: sales02@launch-china.cn .

Skype: launch-02 . Office: 86-755-86037559 .

Add: B5-003, 5/F-Block 3, Yilida Building, No.1092 Nanshan Road, Nanshan District, Shenzhen, china. Postal code 518054.