

Different types of stainless steel 304 and 316 square tubes connectors are available including: 2 way connector , 3 way axisconnector, 3 way T shape connector , 4 way tube connectors connector.

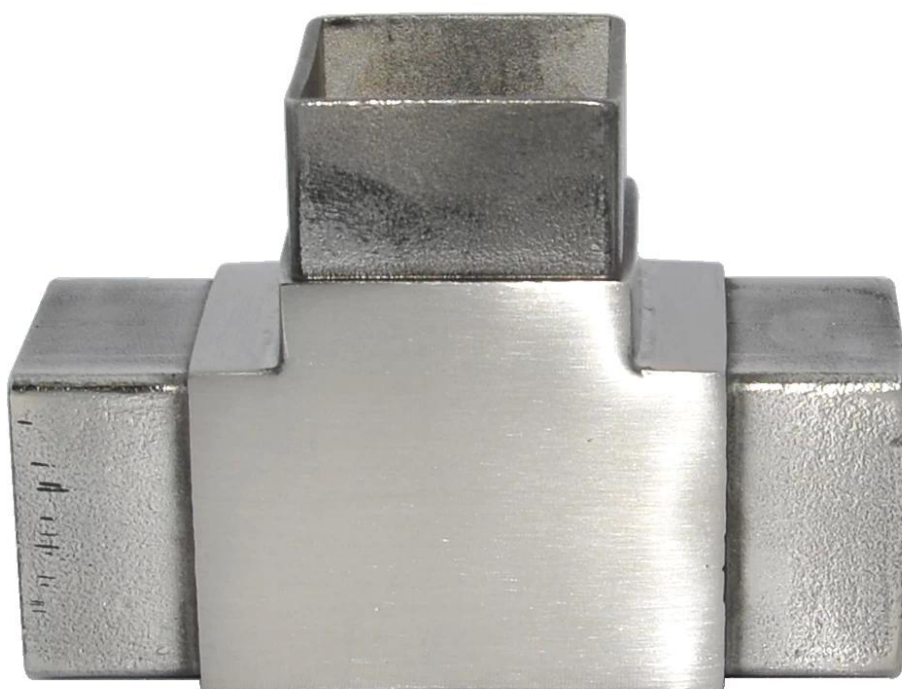
The connectors are used to connect steel structures , mainly for 40*40*1.5mm square tubes . Tailor-made service is also available

Please see below details about our square connectors

2 way connector S401



3 way Tee square connetor S402



3 way corner square connectorS403



4 way square connector S404



4 way square connectorS405

