

stainless steel 316 frameless glass balustrade spigots mini post

1. Specifications ,

1. Material: **Stainless steel 304/316.**
2. Remark: **Passivation treatment available**
3. Finish: Brushed or Mirror polished.
4. For glass thickness: 10-13.52mm.
5. Model No. RBM: Round base plate spigot, net weight around 1.28kg/pc.
6. Model No. SBM: Square base plate spigot, net weight around 1.58kg/pc.
7. Dimension: 168mm height + diameter 100mm dress cover.
8. Accessories: cover, screws, rubber gaskets.
9. usage: 2 spigots support 1 piece glass panel.



SBM

(Square base model)



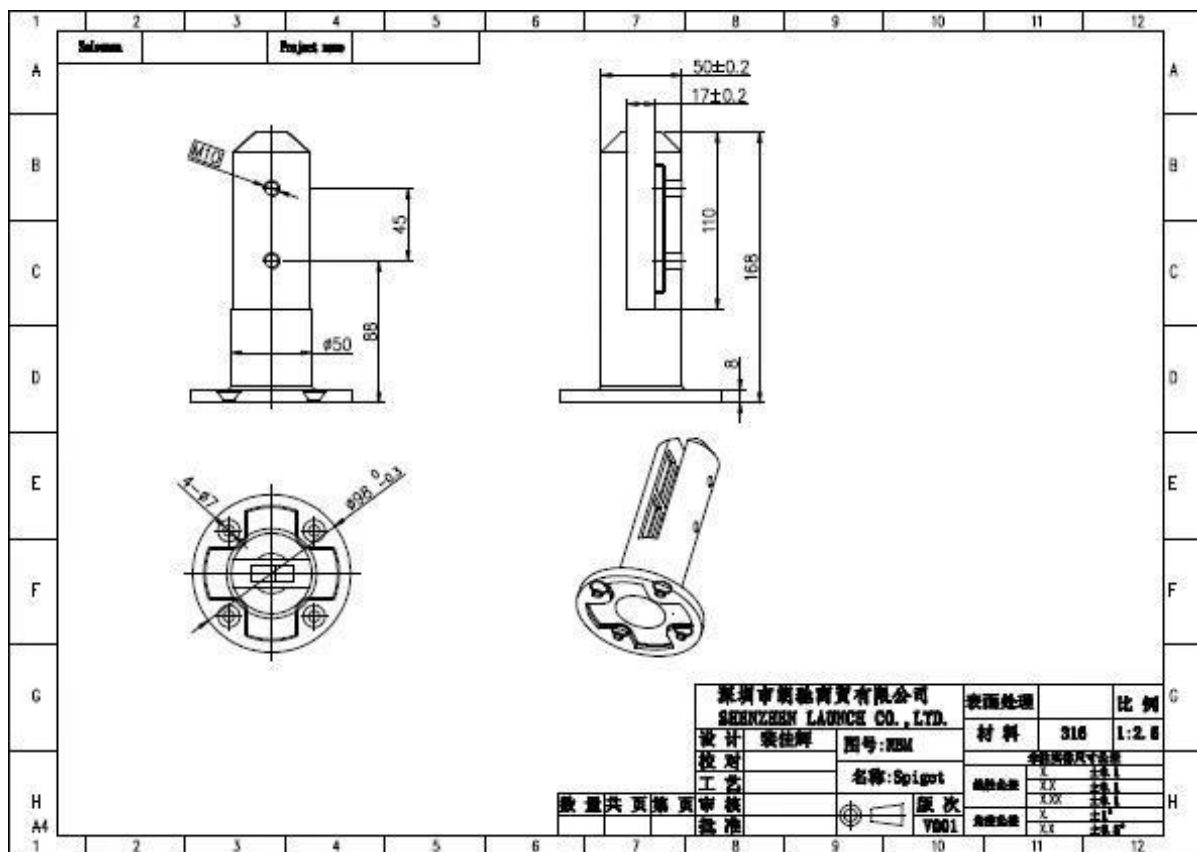
2. Glass spigot/mini post photos ,

Semi - finished :





Dimension drawing :



Finished glass spigot ,

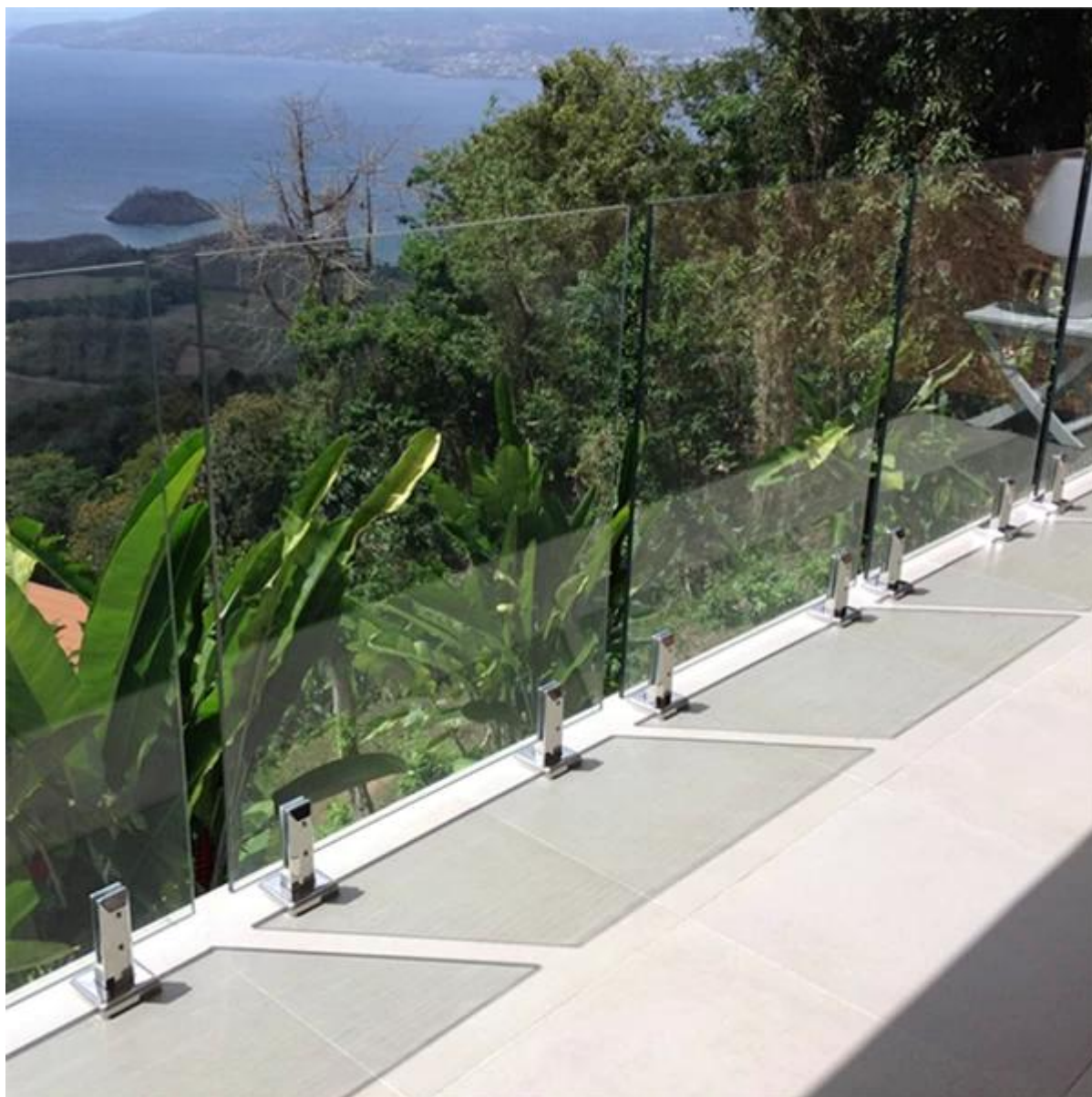






3. Glass spigot project for your reference ,





Thanks for your visit, Any interested, please contact with me freely :

Email: sales02@launch-china.cn .