

Polished Gold finish Glass Clamps, Gold Color Glass Railing Spigots

Stainless steel clamp glass fence spigot

1. Grade: SUS316, SUS316L, DUPLEX2205
2. Glass thickness: 10mm - 13.52mm
3. Finish: Satin brushed or mirror polished
4. Certification: ISO9001, CCC

Material: stainless steel

Model number: SBM

Type: Square

Mounted: Flooring

Application: Frameless Fencing & Balustrade

Products Show:

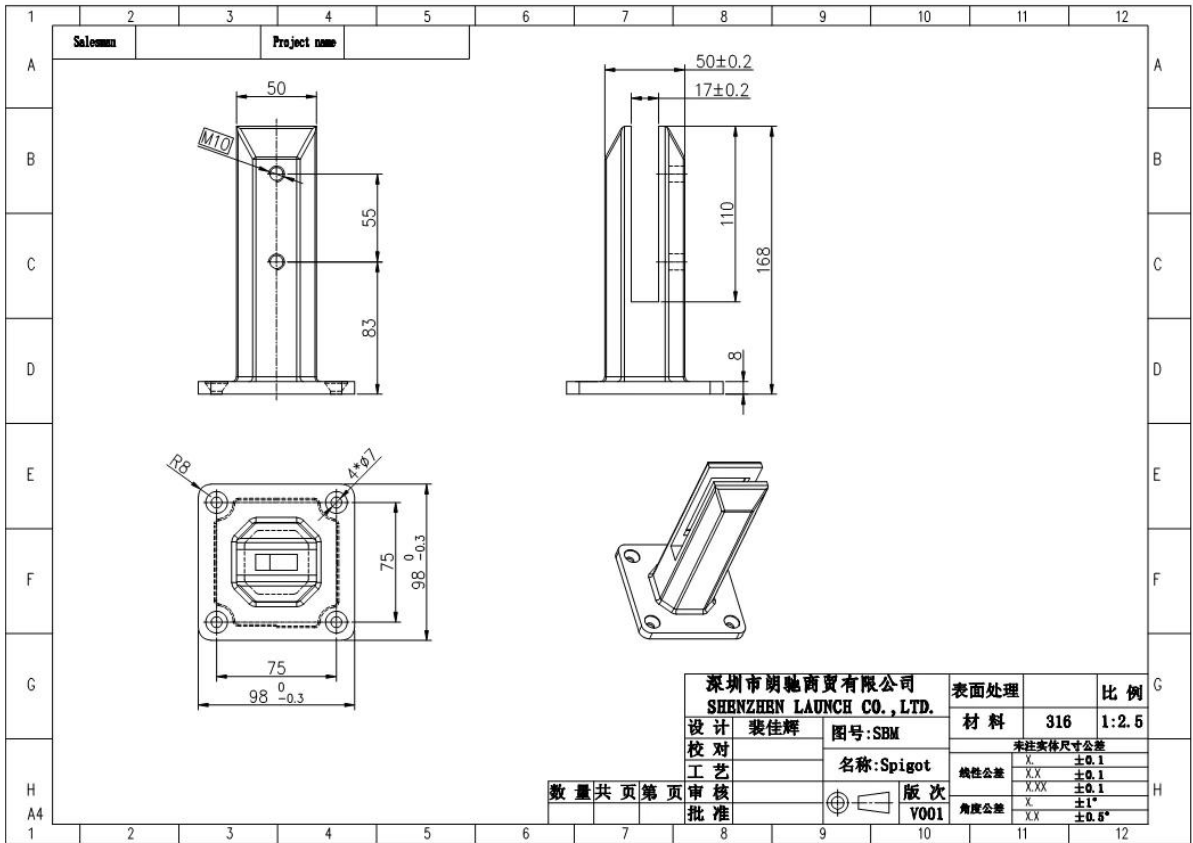
Satin-brushed:



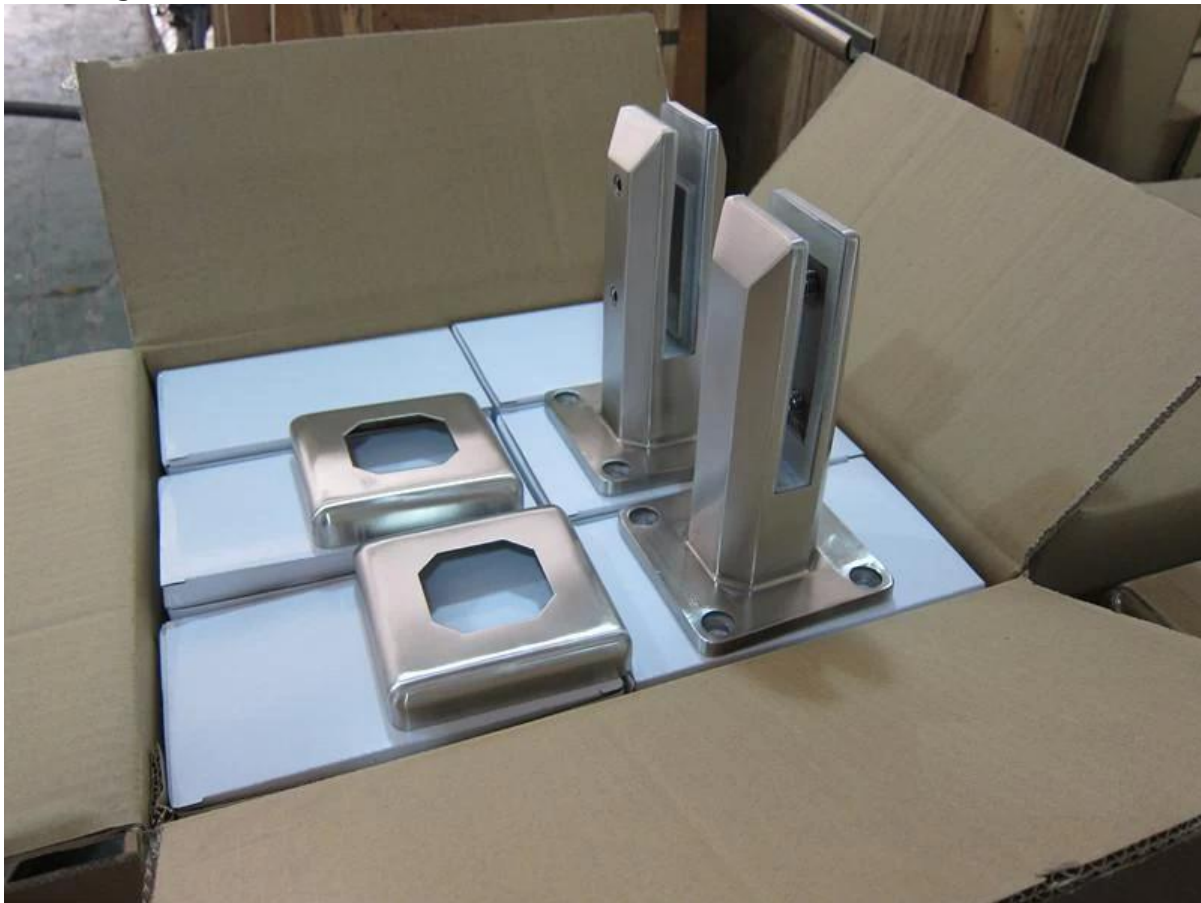
Mirror polished:



Drawing:



Packing:



Application:
SBM in Mirror finish:



SBM in Satin finish:



Shenzhen Launch Co., Ltd is a professional manufacture with design, production and sales of stainless steel hardware, glass railing fittings, handrails accessories and other products.

OUR ADVANTAGE

Please do not hesitate to contact us if you have any requirement regarding our production lines, you can expect a timely reply with professional solutions!



Own factory, shortest lead time.



Can help customers design product drawings based on customer ideas and design engineering installation drawing according to the customer site sketch.



Sample order, trial order acceptable.



Provide material test report to ensure that the material is qualified.



13 years of industry experience, we can help customers recommend the best solution to help customers save cost.

OUR FACTORY

More than 13 years experience in hardware industry design and processing, we can provide customized services from design to the sample and small batch trial production.



OUR CERTIFICATE

With premium quality, competitive price and superior service, we won a lot of customers' favor.
Our products are popular in North America, European and Australia.



PRODUCTION PROCESS



Casting



CNC lathe



CNC Milling



Stamping



Drilling & Tapping



Polishing



Packing & Delivery

Packing Details :

1. Each spigot is wrapped with plastic film and air bag, and then put in a carton.
2. 100 spigots are packed in one bog plywood case.
3. Also can be packed as clients' requirements.

Delivery Details : 10-15 workdays after payment.

Contact:

Email: sales05@launch-china.cn

Mobile: +8613129593615