

## stainless steel standoff bracket for glass mounting

### 1. stainless steel standoff bracket specifications :

- 1. Model No. SF-50T
- 2. one set includes two pieces of standoffs and one piece 200x100 stainless plate bracket
- 3. one stainless steel plate with six holes drilled for M10 bolt
- 4. For steel application or wood application
- 5. For glass thickness: 10-19mm or thicker

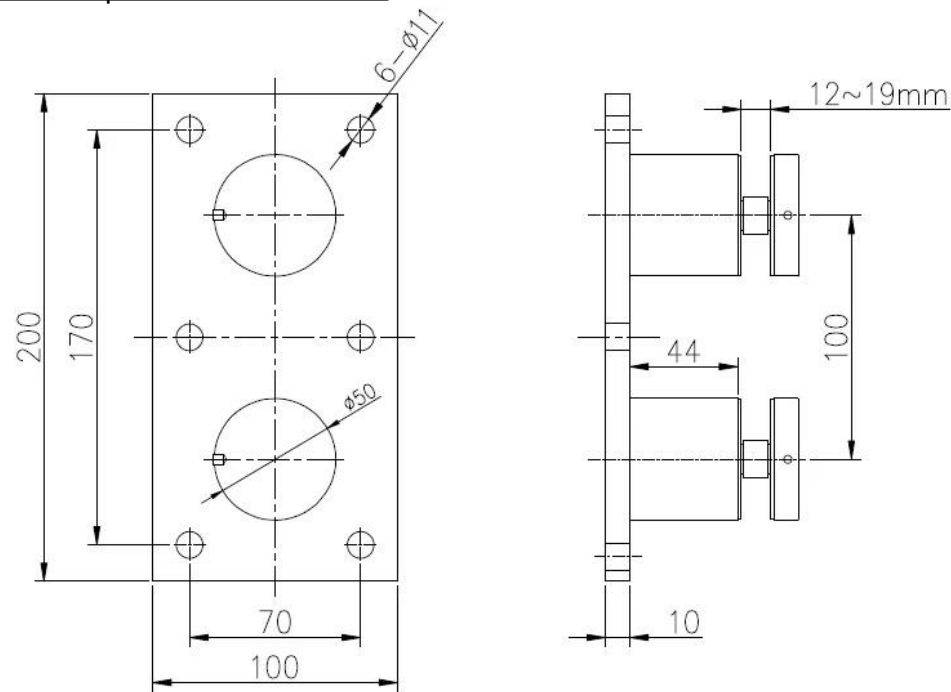




**2. Glass standoff and mounting plate bracket dimensions :**

Plate size: 200x100mm, customized as per your demand;  
Plate thickness: 10mm; For glass thickness 10-19mm or thicker;

Glass standoff plate size as below:



深圳市朗馳商貿有限公司	Surface treatment	Satin	Prop
SHENZHEN LAUNCH CO., LTD.			

3. Glass railing with multi mount standoffs project :







4. The other models glass standoff :

[javascript:void\(0\);/\\*1488422472586\\*/](javascript:void(0);/*1488422472586*/)



Any interested or needs, please contact with me freely :

Contact: Joey Lan

Email: [sales02@launch-china.cn](mailto:sales02@launch-china.cn) .



深圳市朗驰商贸有限公司  
SHENZHEN LAUNCH CO., LTD.

朗驰国际有限公司  
LAUNCH INTERNATIONAL LIMITED.

Joey Lan

Senior Sales Representative

☎ (86) 187 0705 4903

( Mob/Wechat/WhatsApp )

---

深圳市南山区南山大道1092号亿利达大厦B区3栋5003

Room 5003, Building 3, Yilida Building, No.1092  
Nanshan Road, Nanshan District, Shenzhen, China  
postal code 518054

---



(86-755) 8603 7559



(86-755) 8637 2611



sales02@launch-china.cn



www.launch-china.com

www.chinabalustrade.com