

stainless steel standoff mounting frameless glass staircase railing modern design

### **1. Stainless steel standoff specifications :**

- Material: Stainless steel 316
- Finish: Brushed or Mirror polished
- For glass thickness: 6-19mm thickness
- Solid, high quality, rubber gasket included
- **Model No.SF-30:** 30\*10mm cap , 30\*25mm body , M8\*100 bolt, mount to concrete / M8\*50 bolt, mount to wood .
- **Model No.SF-50:** 50\*12mm cap , 50\*30mm body , M12\*120 bolt, mount to concrete / M12\*72 bolt, mount to wood .
- **Model No.SF-50T:** one set includes two pieces of standoffs and one piece of stainless steel plate 200x100mm size .

#### **1) Model No. SF-30 :**



#### **1) Model No. SF-50 :**

Wood screw type ,





Concrete screw type.



3) Model No. SF-50T :



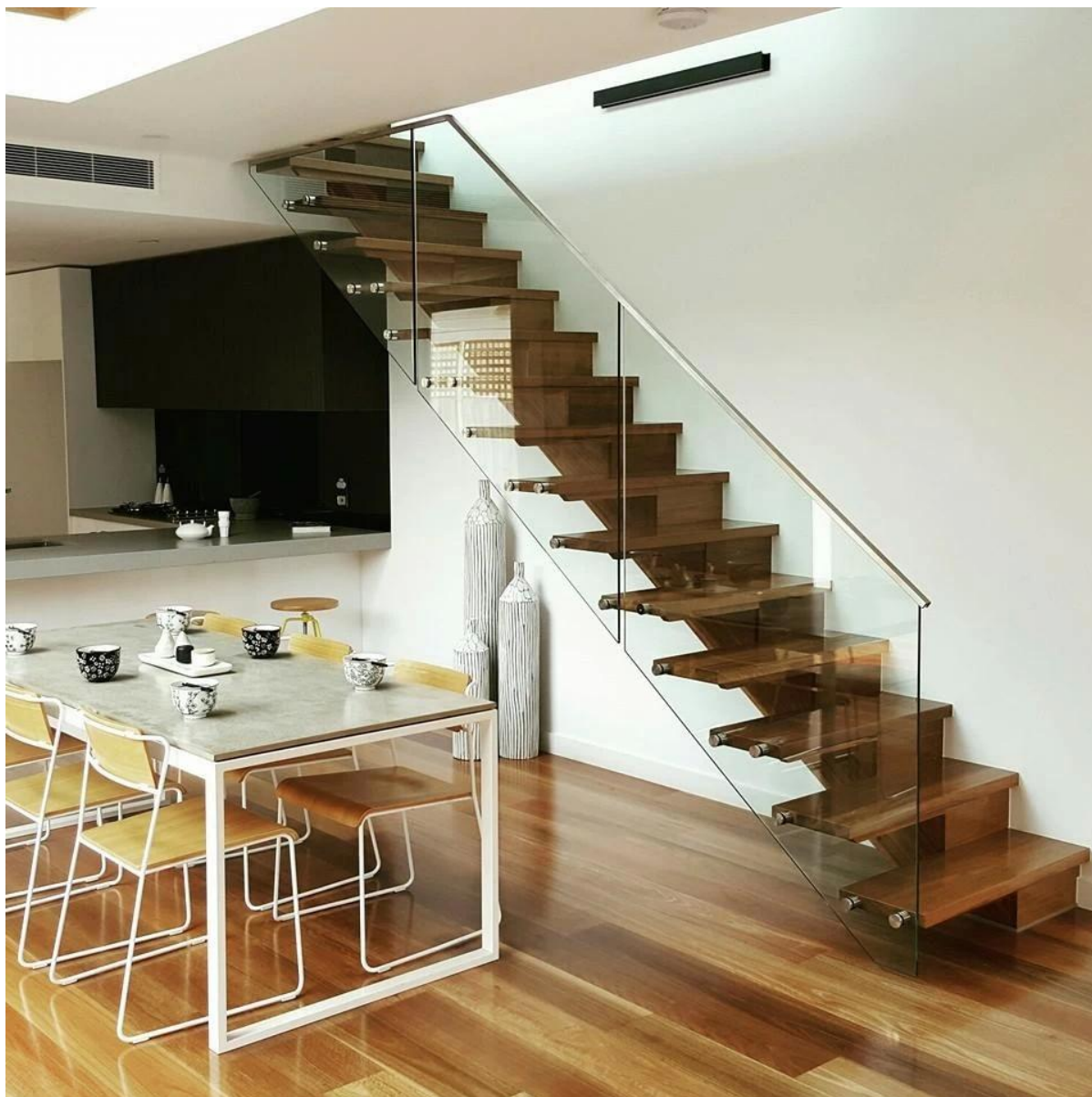
**SF-50T**



**2. Stainless steel standoff mounting frameless glass staircase railing modern design photos**







**3. Frameless glass balustrade slotted stainless steel mini top handrail , please refer to :**

[javascript:void\(0\);/\\*1482742112094\\*/](javascript:void(0);/*1482742112094*/)

**KEBIL** 科比奥®



**5.8 m per length**



A close-up photograph of a grey plastic cable strain relief fitting. The fitting has a semi-circular, hinged design that allows it to bend and secure a cable, preventing it from being pulled out of a port or damaged by tension.



Email: [sales02@launch-china.cn](mailto:sales02@launch-china.cn) .  
Skype: [launch-02](#) . Office: 86-755-86037559.  
Mob/Wechat/WhatsApp: +[86-18707054903](#) .

Email: [sales02@launch-china.cn](mailto:sales02@launch-china.cn) .

Skype: [launch-02](#) . Office: 86-755-86037559.

Mob/Wechat/WhatsApp: +86-18707054903 .