

316 鋁合金 閘門鎖扣 閘門鎖扣 閘門鎖扣 閘門鎖扣 閘門鎖扣 閘門鎖扣 閘門鎖扣 閘門鎖扣 閘門鎖扣 閘門鎖扣 閘門鎖扣 閘門鎖扣 閘門鎖扣 閘門鎖扣 閘門鎖扣 閘門鎖扣 12 個 閘門鎖扣 8 個 閘門鎖扣。

閘門鎖扣 閘門鎖扣 閘門鎖扣 閘門 -

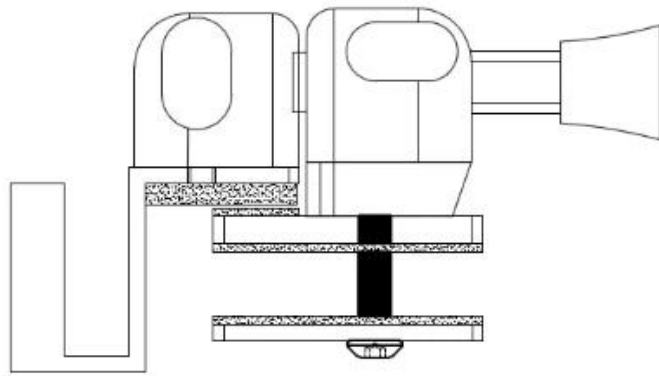
閘門 180 閘門鎖扣 閘門鎖扣



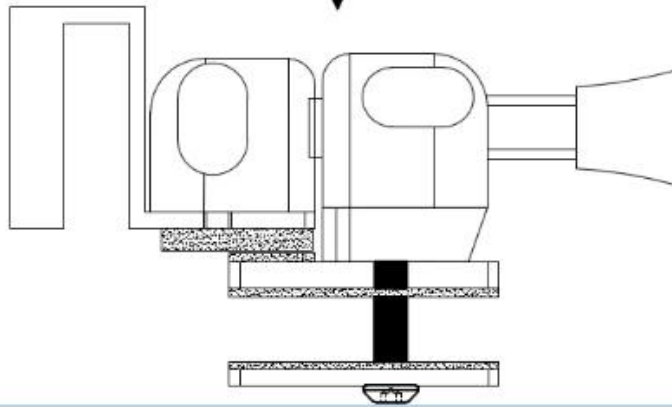
閘門鎖扣 閘門鎖扣 閘門鎖扣 90 閘門鎖扣 閘門鎖扣



**out swing**



**in swing**



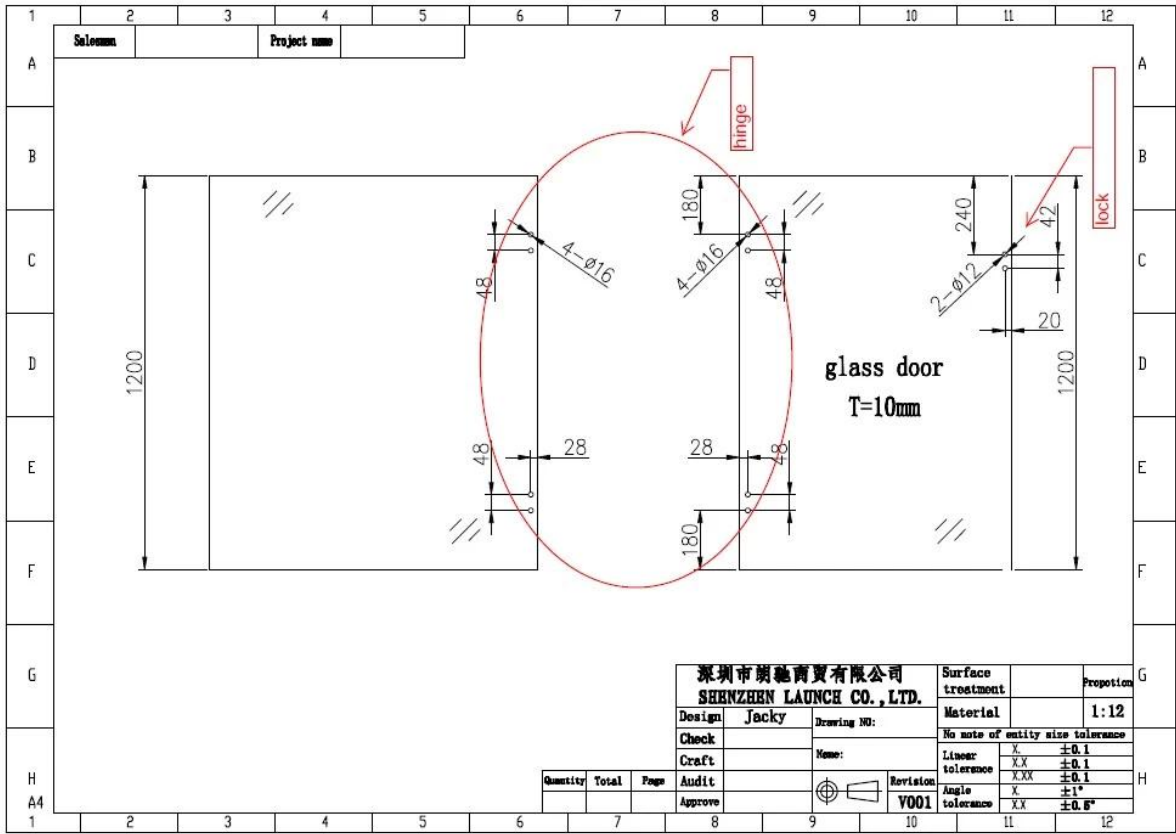
□□□□□ □□□□ □□□□□



□□ □□ □□ □□ □□□□



□□□□□□ □□□□□□ □□□□ □□□□ □□□□□□ □□□□□□ □□□□□□ □□□□□□



深圳市朗馳商貿有限公司 SHENZHEN LAUNCH CO., LTD.		Surface treatment	Proportion
Design: Jacky	Drawing NO:	Material	1:12
Check	Name:	No note of entity size tolerance	
Craft		Linear tolerance	X ±0.1
		XXX tolerance	±0.1
		Angle tolerance	X ±1°
		XXX tolerance	±0.5°

Quantity	Total	Page	Audit	Approve



Revision  
V001