







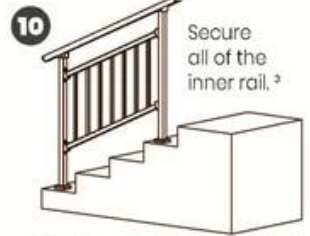
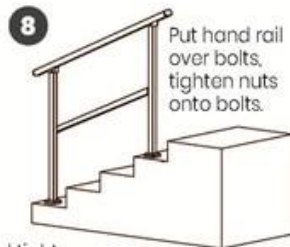
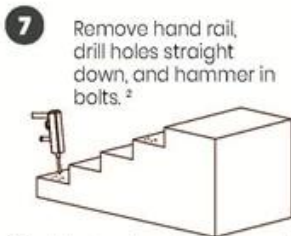
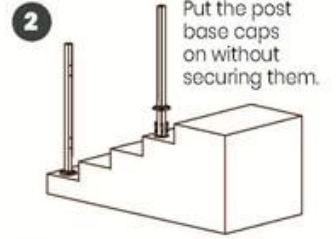
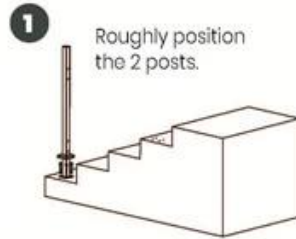
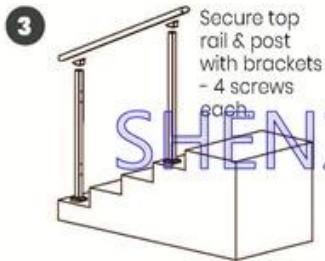
□□□□□□ □□□□ □□□□□□□□-



# Guard Rail Assembly Instructions

**Tools Required:** Electrical Power Drill  
(Impact Drill Preferred)

**Overview:** Assemble the rail and position it before marking holes for drilling. Improper installation can lead to failure of rail system or injury.



<sup>1</sup> Inside rail will be loose until each post is secured to the ground.

<sup>2</sup> Double check posts are parallel and tight against inside rail before marking holes for drilling.

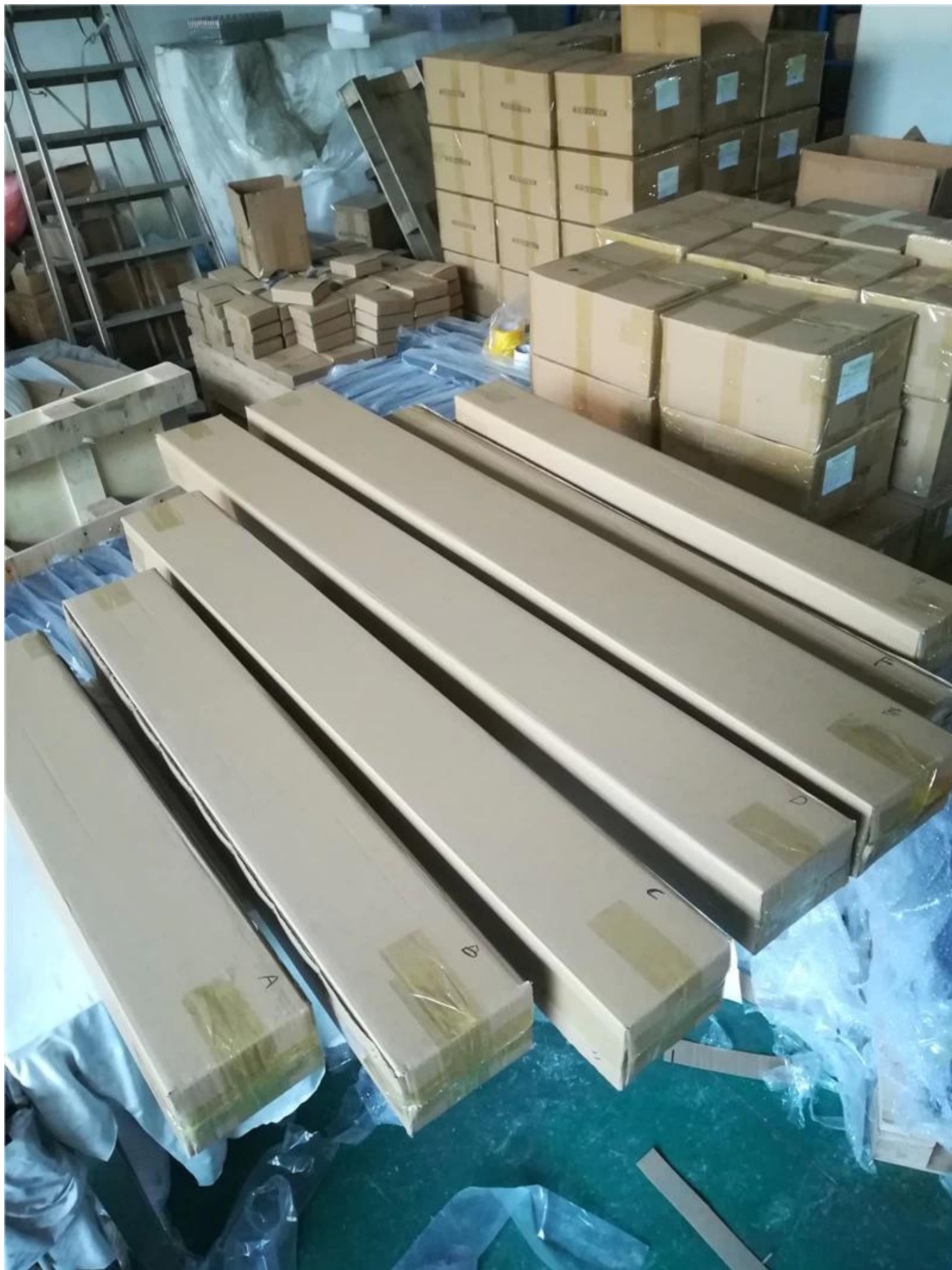
<sup>3</sup> Push and pull top rail & inside rail to ensure all is secure.

SHENZHEN LAUNCH CO., LTD









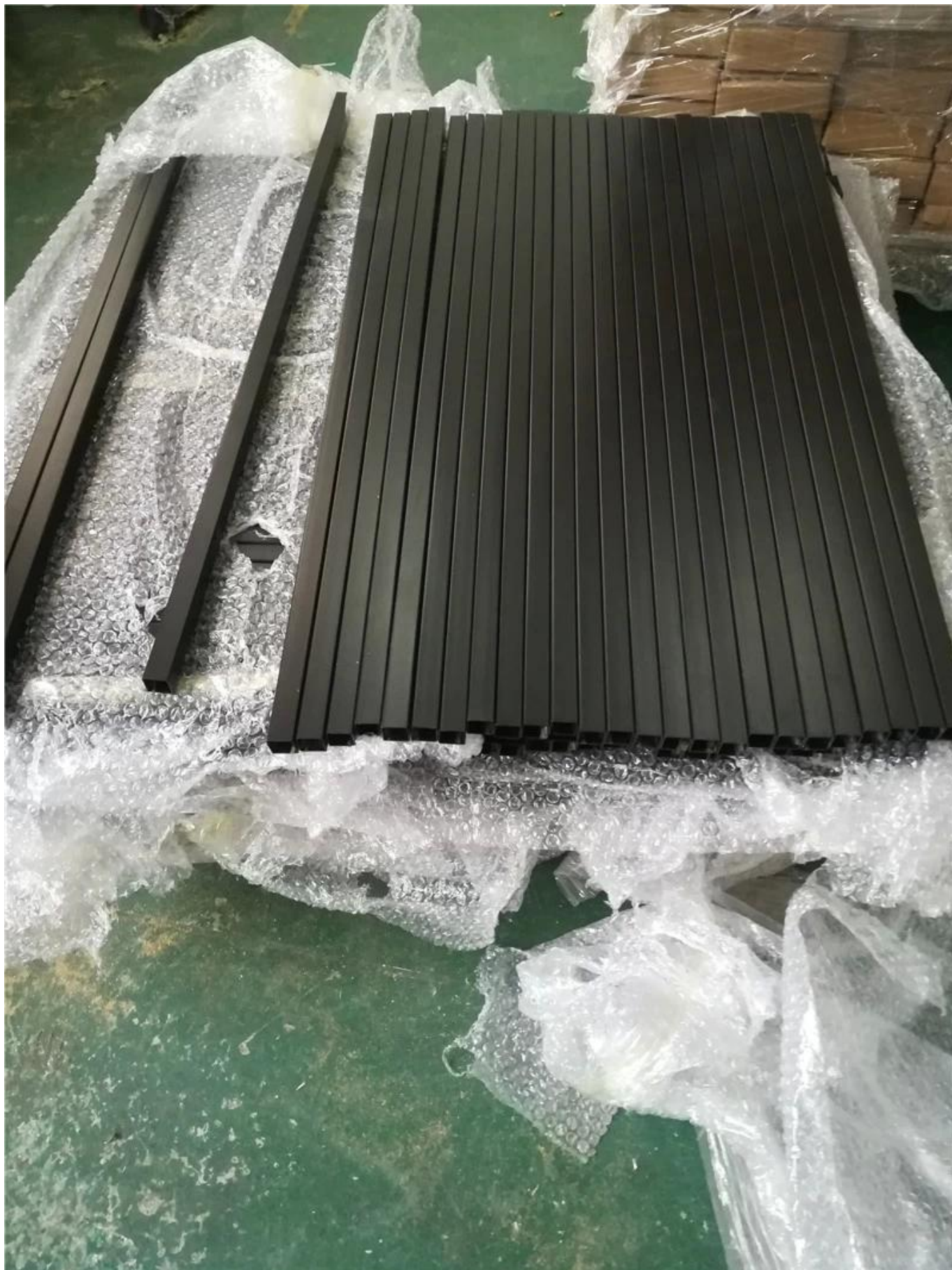




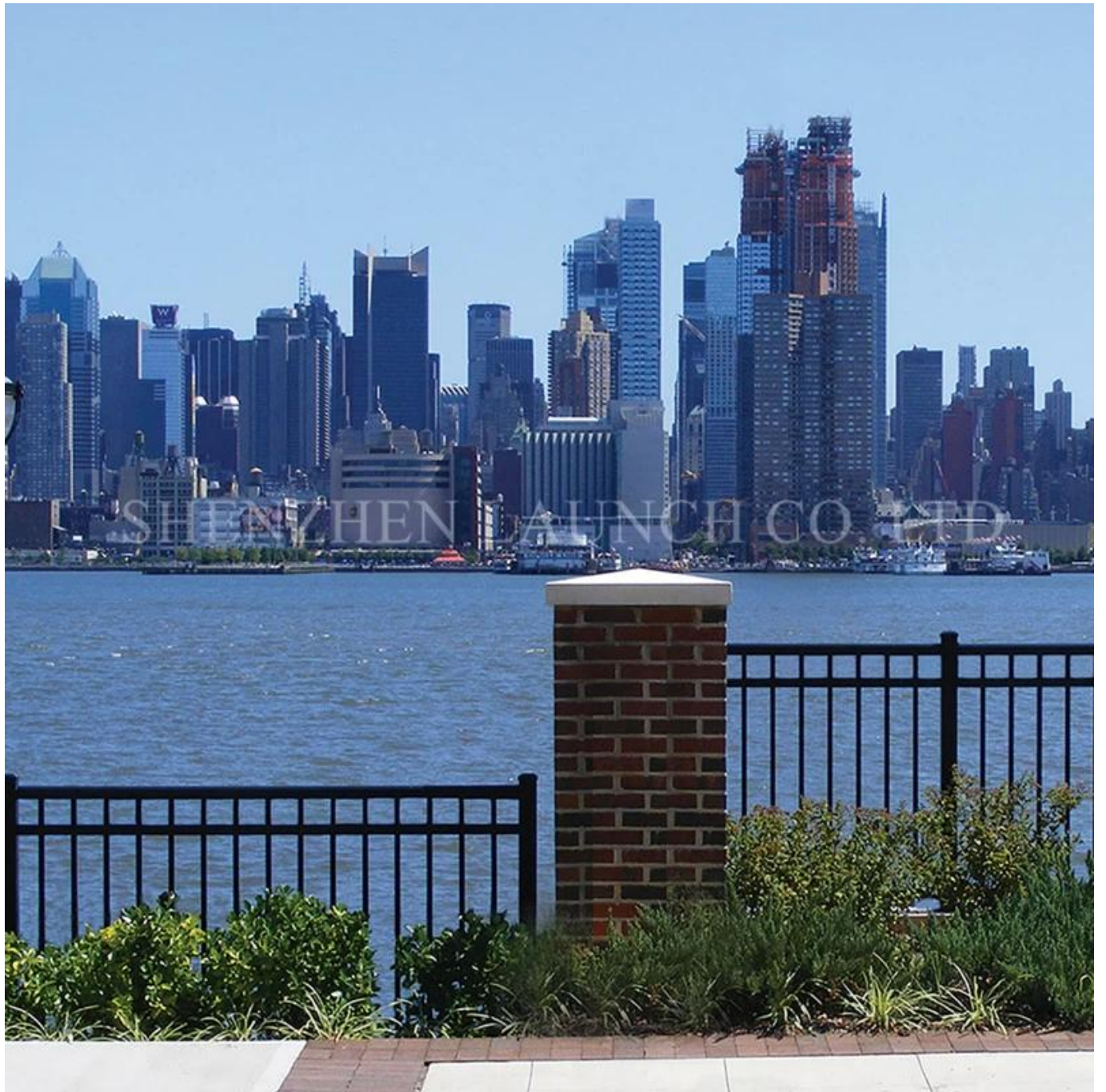








□□□□□□ □□□□ □□□□ -







[www.chinabalustrade.com](http://www.chinabalustrade.com)

