

2004  
 .  
 .

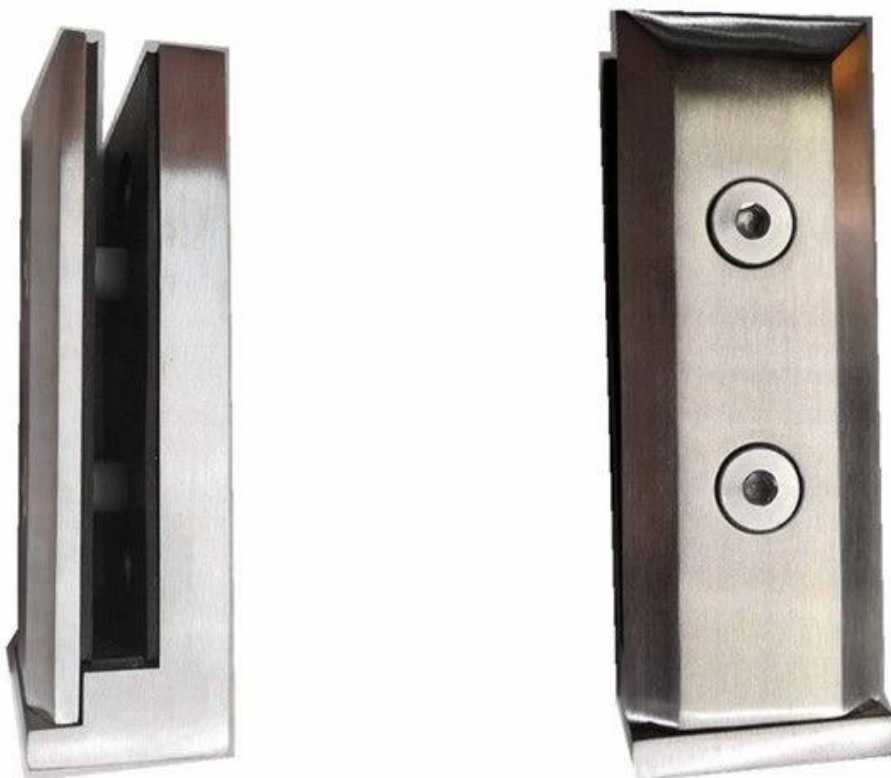
技术参数

材料	304SS / 316SS / 316LSS / 2205
规格	10-13.52
重量	SBM / SCM RBM / RCM

产品特点



# Side Mounted Glass Spigot



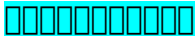
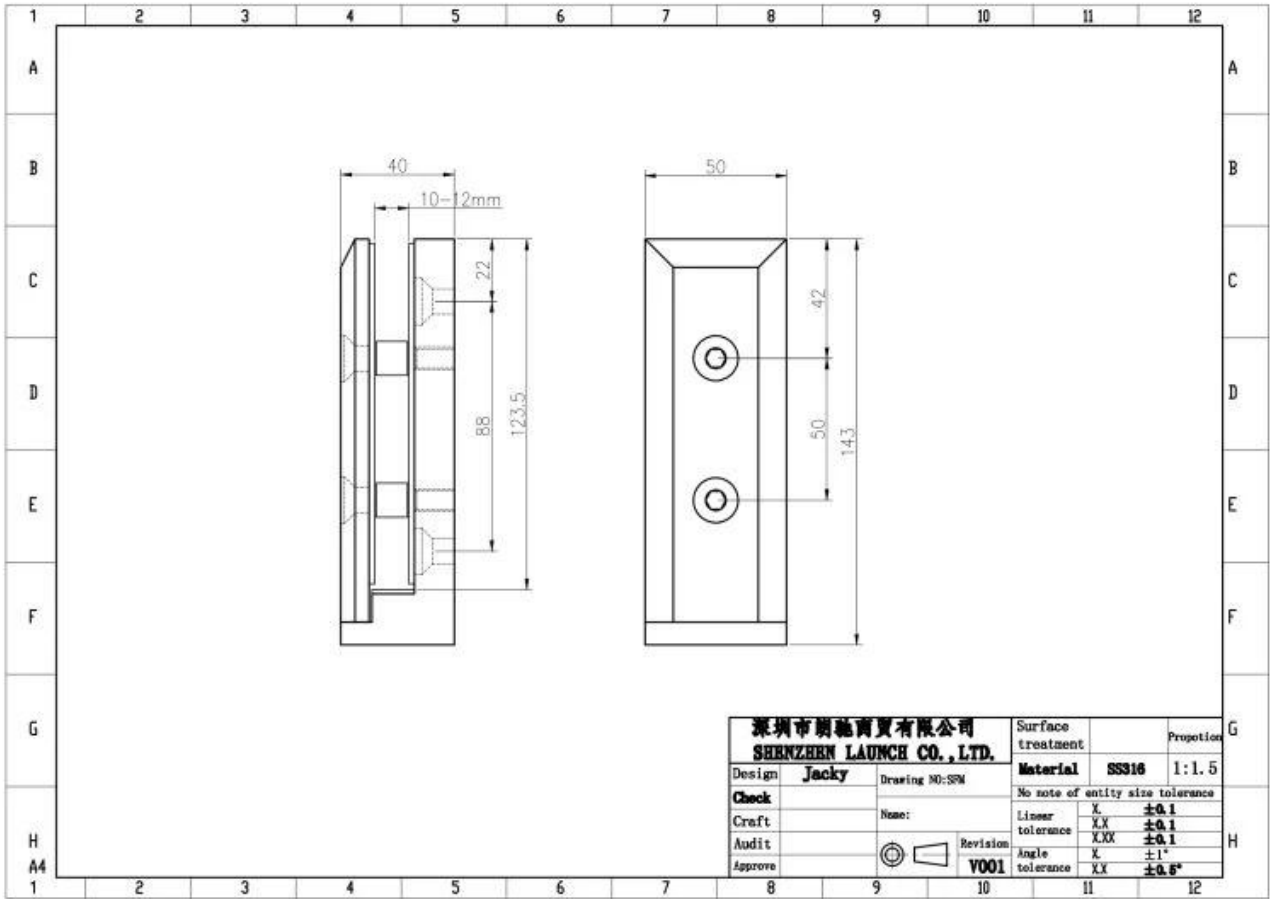
应用范围



□□□□□□□□



□□□□□□





With the front face plate removed, level or align the Clamps to your design plan, taking into account the spacing recommendations and weight limitations shown on the back of this page. Be sure to secure the Clamps to an engineered and approved substrate with appropriate fasteners. You can fabricate the glass ahead of time, however, we recommend calculating hole locations after the Clamps are installed to account for any clamp movement.



Check the layout of the Clamps for alignment, then do a layout for fabricating holes in the glass to meet the installed measurements and spacing between glass panels.



Place the gaskets against the base fitting, both back and bottom lip, then set the glass panel on the base fitting. Next place the front gasket against the glass panel along with the front plate and secure to the base fitting by tightening the two screws. Don't tighten all the way, leave enough play to adjust the glass panel.



After you have achieved the proper alignment tightly secure the front plate screws to finish the installation. Clean the glass and view from a distance to determine if everything matches up and looks good. Adjust if necessary.









□□□□□ □□□



□□□□□□ □□ □□ □□□□□□□□





□□□□ □□□□ □□



Launch China 是一家专业的火箭发射服务提供商，我们提供定制化的发射方案，满足您的各种需求。我们拥有先进的发射设施和专业的技术团队，确保您的火箭安全、准时发射。如果您有任何疑问，请随时联系我们。

Launch China 电话：+8615906261741  
Launch China 邮箱：sales02@launch-china.cn