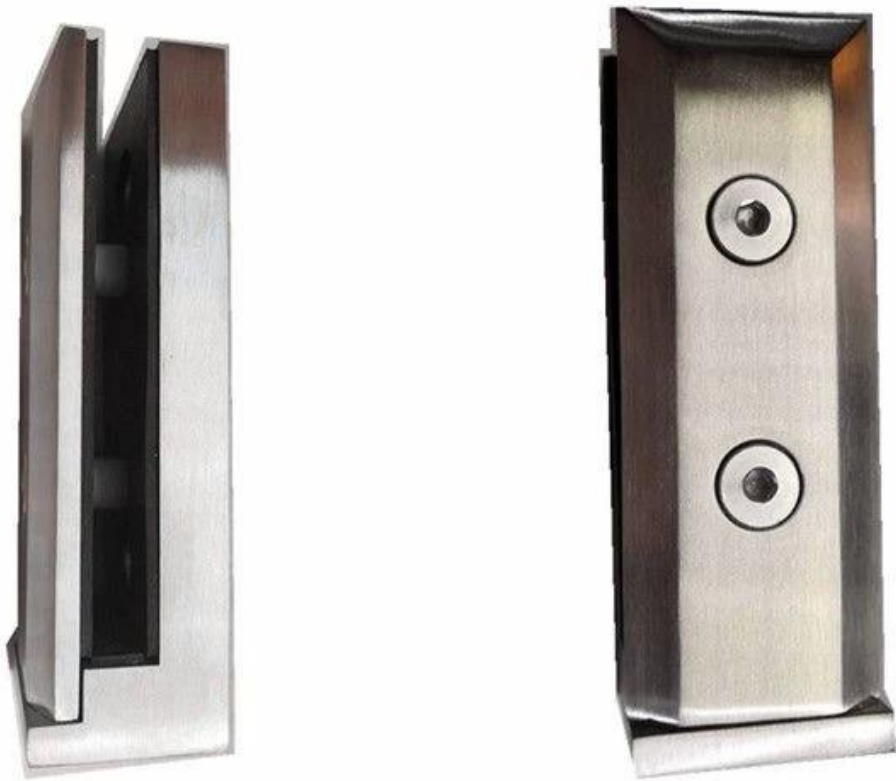


2004
.
.

	304SS / 316SS / 316LSS / 2205
	/ /
	10-13.52
	SBM / SCM RBM / RCM



Side Mounted Glass Spigot





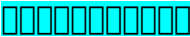
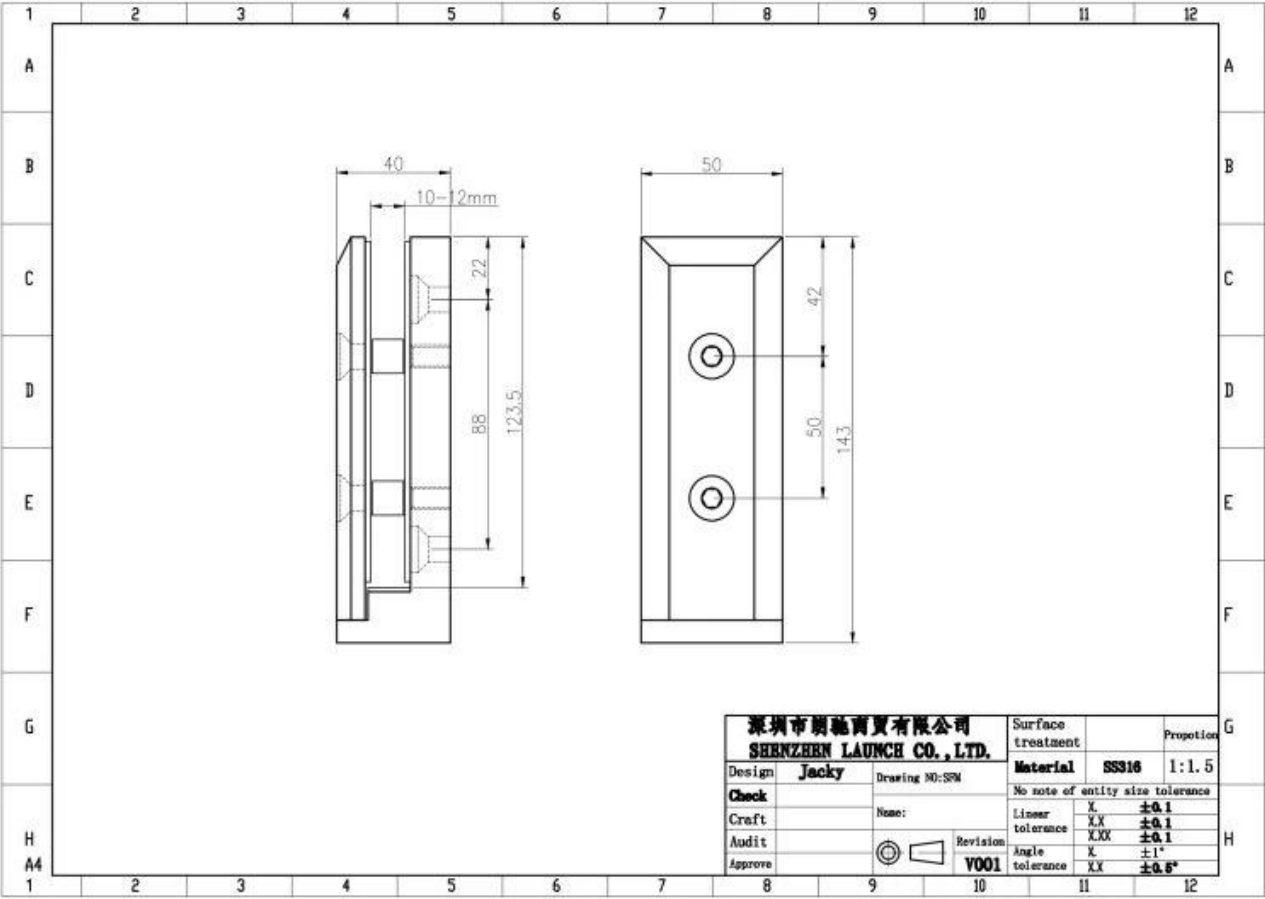
□□□□□□□□



□□□□□□□□



□□□□□□□□





With the front face plate removed, level or align the Clamps to your design plan, taking into account the spacing recommendations and weight limitations shown on the back of this page. Be sure to secure the Clamps to an engineered and approved substrate with appropriate fasteners. You can fabricate the glass ahead of time, however, we recommend calculating hole locations after the Clamps are installed to account for any clamp movement.



Check the layout of the Clamps for alignment, then do a layout for fabricating holes in the glass to meet the installed measurements and spacing between glass panels.



Place the gaskets against the base fitting, both back and bottom lip, then set the glass panel on the base fitting. Next place the front gasket against the glass panel along with the front plate and secure to the base fitting by tightening the two screws. Don't tighten all the way, leave enough play to adjust the glass panel.



After you have achieved the proper alignment tightly secure the front plate screws to finish the installation. Clean the glass and view from a distance to determine if everything matches up and looks good. Adjust if necessary.









門把系列 門把 門 門把系列



铝合金 定制 零件



Launch China 是一家专业的中国火箭发射服务提供商，我们提供从火箭发射到卫星部署的全方位服务。

Launch China 地址：中国北京

8615906261741+ 电话

Launch China 邮箱：sales02@launch-china.cn