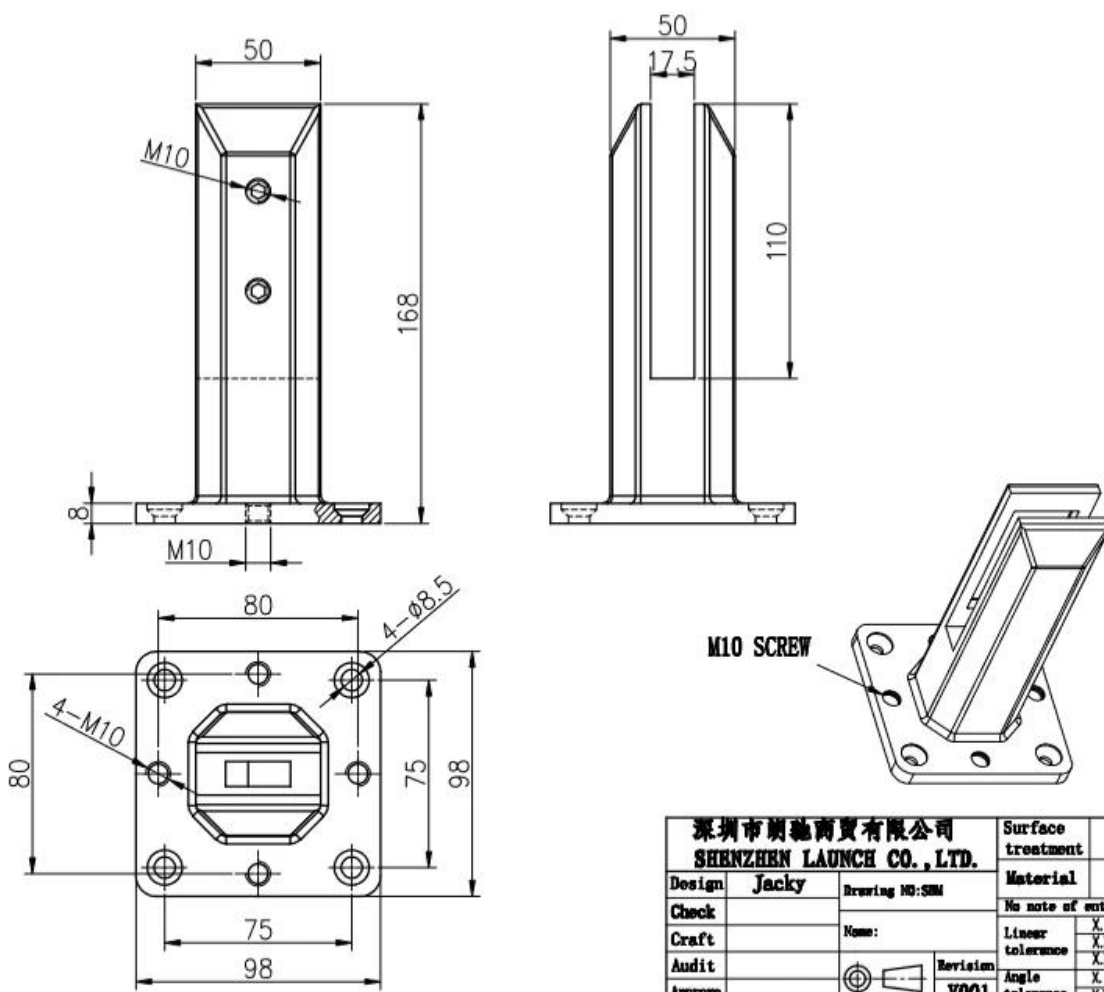


# Balkon Zaunboden Glashalterungen Duplex 2205 Material für den Außenbereich für 1/2 "Dickglasgeländer.

## 1. Merkmale von Balkonzaunboden-Glas-Montagehalterungen-

Material	Duplex 2205.
Fertig	Satin gebürstet
Höhe	168mm.
Glasdicke.	10-13.52mm Dickenglas.
Höhe	168mm; oder kann angepasst werden
Kunststoffdichtung.	Hergestellt aus Nylonmaterial, kann es für eine lebenslange Zeit dauern
Betonschraube anpassen	M8 * 100.
Gewicht des Geräts pro PC	1.42kg.
Auf Lager	Ja
Moq.	2 stück

## 2MaßevonSbmGlashalterungen-



<b>深圳市朗驰商贸有限公司</b> <b>SHENZHEN LAUNCH CO., LTD.</b>		Surface treatment	Preparation
Design	Jacky	Material	1:2
Check	Drawing NO: SSM	No note of entity size tolerance	
Craft	Name:	Linear tolerance	X ±0.1
Audit	Revision	XXX tolerance	±0.1
Approve	 V001	Angle tolerance	X ±1°
			XX ±0.5°

### 3. Wird geladen Prüfung & Material Prüfung zum Sbm Glashalterungen-



## LOADING TEST FOR SBM

### Introduction

MTS Metallurgical Testing Services was engaged to witness the installation of a sample pool fence spigot and to subsequently conduct load tests on the spigot to the requirements of Australian Standard AS1926.1 - 2012.

Standard/Specification AS 1926.1 - 2012, Section 3.2 and Appendix B

### Results Summary

(For details of individual tests, refer to the tables on the following pages.)

ID	Item/Heat No.	Dimensions/Type/Details	Finish	Overall Assessment
14117/01	SSRM316	60mm Square, Base Plate 316 Stainless steel	316I	COMPLIES

### Remarks

After completion of the testing, the spigot was found to be in sound condition with no breakage, tearing or signs of fracture and no looseness of the fixings.

Colin Cousins  
Metallurgical Testing Manager



Accreditation No: 15624  
Accredited for compliance  
with ISO/IEC 17025

## Strength Test

Test Specification AS 1926.1 - 2012, Appendix B Test Procedure MTS-TP3.1 Compression Tests - Products

Specimen ID	Observations	Assessment
14117/01	Test Equipment: Hydraulic ram and 10,000 N load cell Test Load: 330N Load Duration: 45 Secs Deflection under load: 1 mm Permanent Deflection after removal of test load: 0 mm	COMPLIES

Requirements No permanent damage or loosening of fixings.



12/16/2020 5:54:18 PM

Method: Fe-30  
 Comment: Cr-, Cr/Ni-steel  
 Type Standard 18--8

12/16/2020 5:54:09 PM

Type corr.concentr.

Sample Name:

Sample ID:

	C	Si	Mn	P	S	Cr	Mo	Ni
	%	%	%	%	%	%	%	%
< x > (1)	0.0224	0.8873	1.1010	0.0263	0.0032	21.6796	3.0718	5.5691

	Al	Co	Cu	Nb	Ti	V	W	Pb
	%	%	%	%	%	%	%	%
< x > (1)	< 0.0005	0.0797	0.1603	< 0.0002	0.0044	0.0893	0.0305	< 0.0002

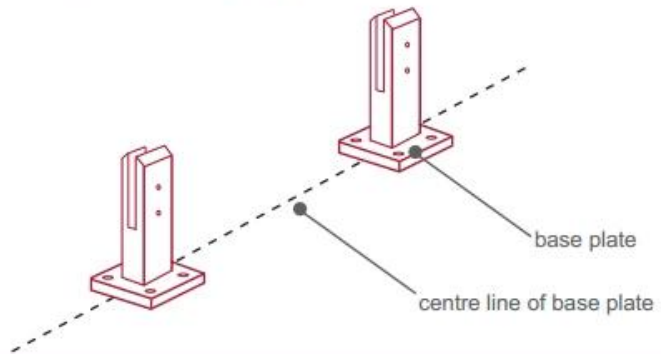
	Sn	Sb	B	N	Fe			
	%	%	%	%	%			
< x > (1)	0.0092	< 0.0004	0.0024	0.1024	67.1600			



## fixing method: base plate spigots

Mark out the centre line of proposed glass fence with a chalk line. Determine clamp location based on a sheet size (recommendation on pages 1 & 2). Use base plate as a template to mark out the hole positions and drill holes to suit.

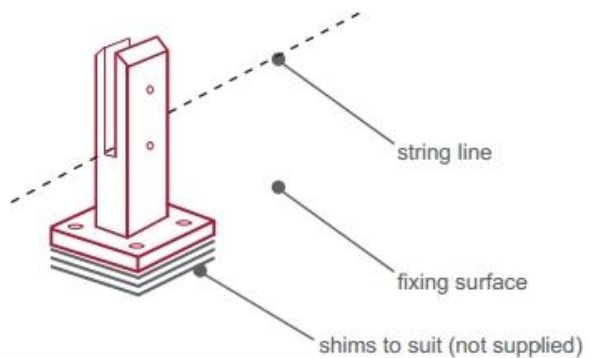
**Note:** Do not exceed 100mm gaps between glass panels. Optimum gap is 40mm to 60mm



Now the base plated spigots can be fitted to the floor and plumbed via shims (not supplied) under the base plates. Be sure to tighten firmly as the smallest of movement at the base plate will result in noticeable movement at the bottom of the glass fence.

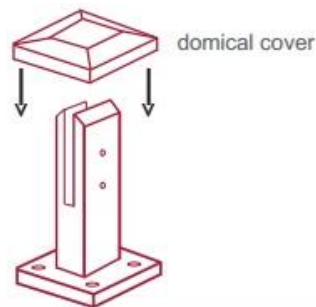
**Tip:** By setting the two outer spigots of your total span, a string line can be run in the 'throat' of the spigots, giving correct height for all spigots in between

**Note:** Do not exceed 100mm gap from the fixing surface to the bottom of the glass



When all spigots are installed, slip domical cover the top of the spigot to hide fixings. It will be necessary to turn the adjustment screws on the spigot face all the way in to allow cover to pass over

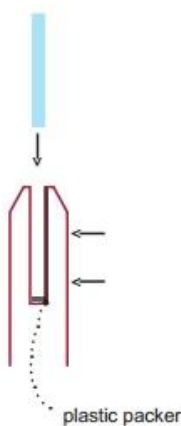
**Note:** Same installation method applies to round base plate spigot



The glass is then installed to the spigots. Place plastic packers between glass & spigot, at no stage should glass touch the metal

### How adjustability works:

1. Place glass in spigot
2. Fix/ tension glass both sides with allen key



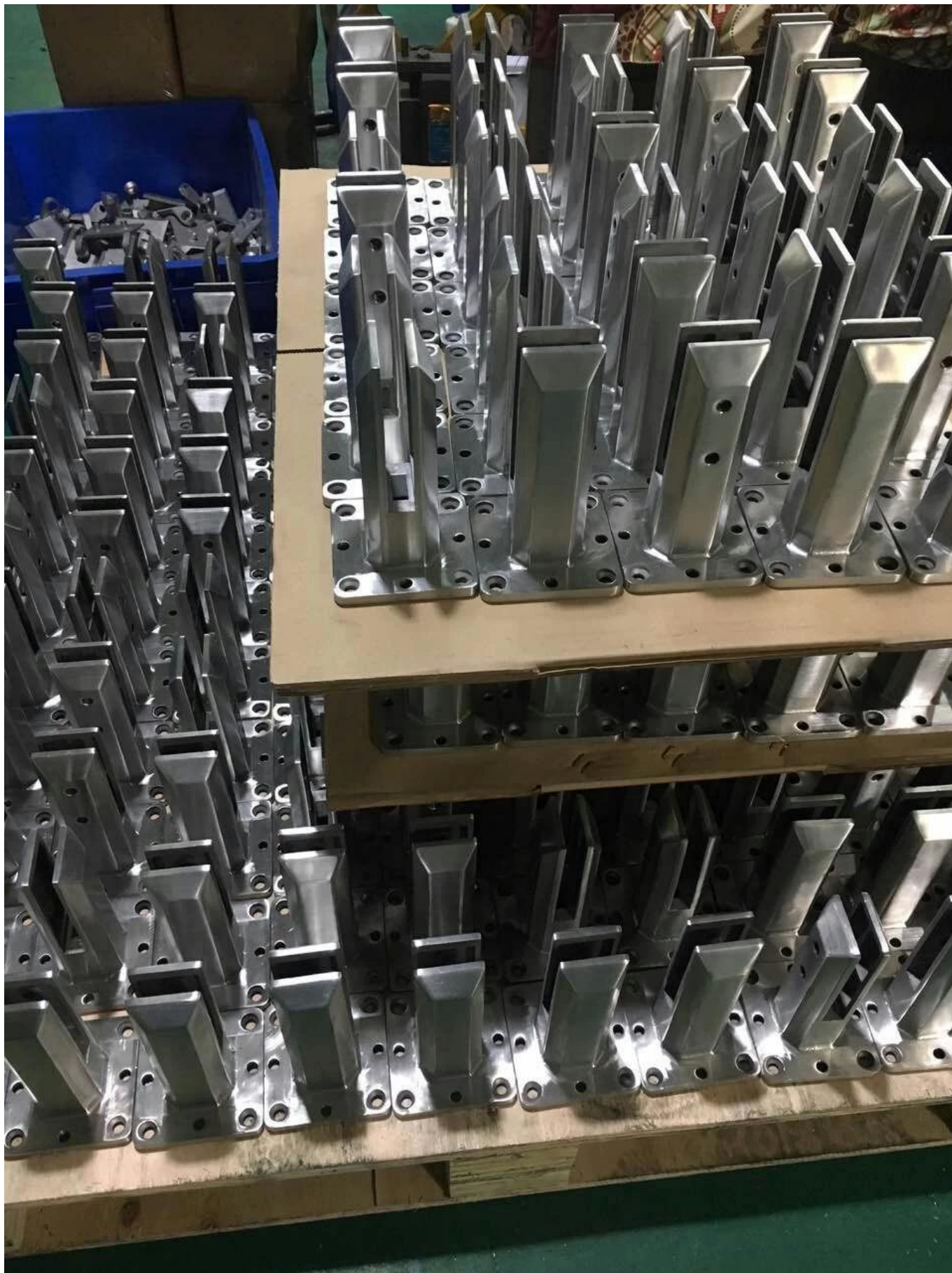
## 5VerpackungEinzelheitenzumSbmGlshalterungen -

1 Stück in eine weiße Box; 12 PCs in einen Karton-





## 6.MasseProduktionProzesszumSbmGlashalterungen-







**7. Mehr Modelle von Glas Zapfen zum Ihre Auswahl-**







MODEL # SBM



MODEL # SCM



MODEL # RBM



MODEL # RCM

Glass spigot

8ProjektFotosvonRahmenlosGlasGeländermitGlasWinkel-

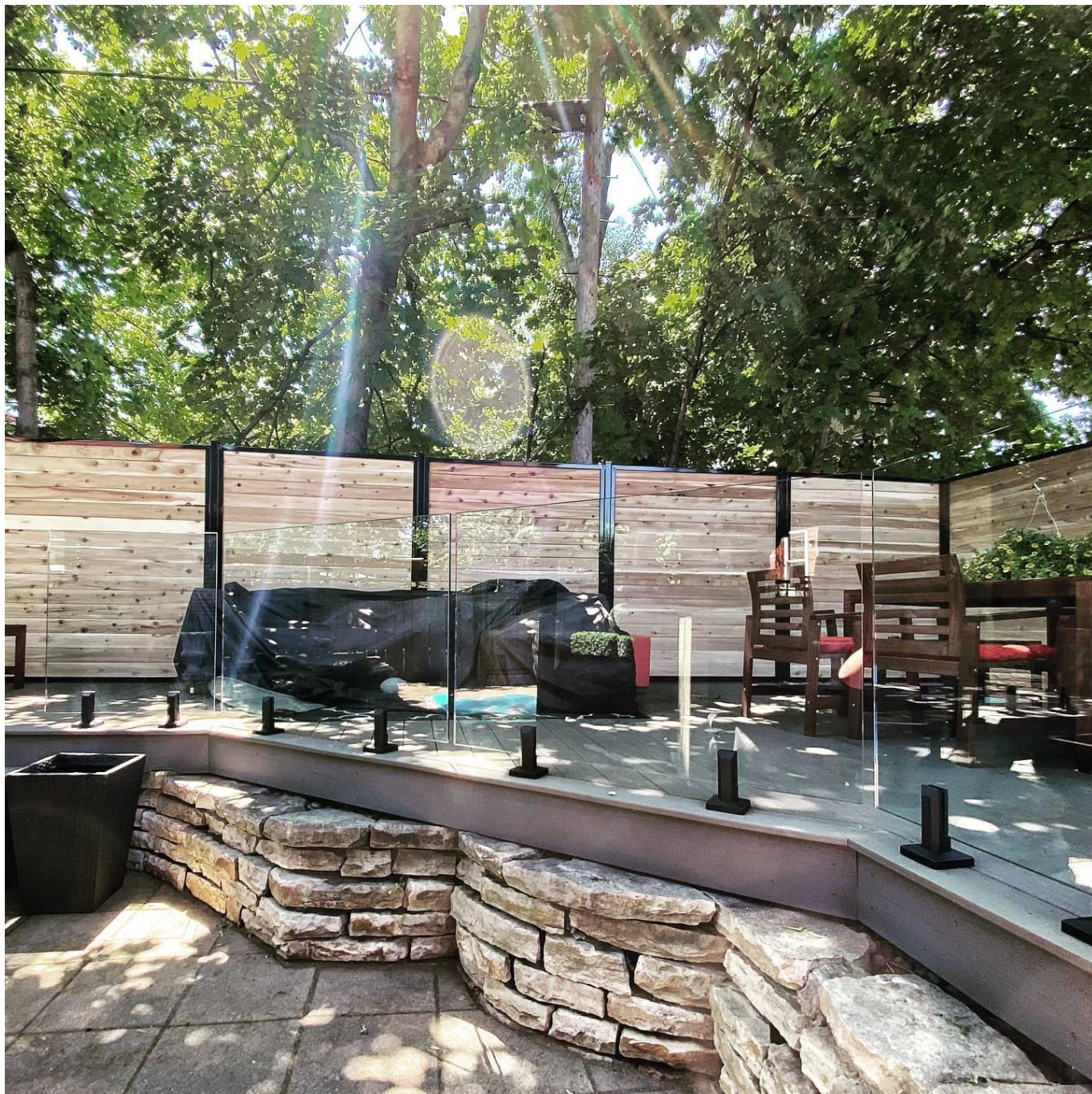












**Wir haben auch Glasscharnier & magnetische Latches & Glasklemmen und gehärtetes Glas mit dem gesamten rahmenlosen Glasgeländersystem.**

Fühlen Sie sich frei, uns jetzt zu kontaktieren, um Zitate zu bekommen!

**Shenzhen Launch Co., Ltd**

*Von SGS überprüft, Bericht Nr. 19536352\_P + T*

Büro hinzufügen:

B5-003, 5 / F-Block 3, Yilida-Gebäude, Nr. 1092 Nanshan Road, Nanshan District, Shenzhen, China, Postleitzahl 518054

Tel: 86-755-86037559 Fax: 86-755-86372611

Mob (WhatsApp, Wechat, Viber) +86 135 9027 3543

Kontakt:CeliaChen