

Pulverglasur B. Mangel farbe Stahlhandschienen für Treppenhausdraussenoderinnenbenutzen. Alle notwendigen Klammern / Schrauben werden bereitgestellt.

Accessories für Stahlhandschienen-

Treppenhaus Handlauf Mittelschiene, um die Halterung zu posten -



Treppenhaus Handlauf Mittelstange, 32 * 32mm -



Treppenhaus Handlauf Post 40 * 40mm-



Treppenhaus Top Handlauf Tube-



Nach der Montage-



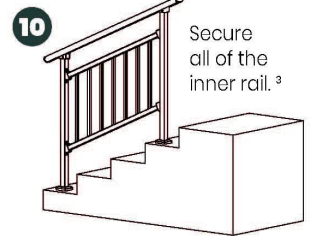
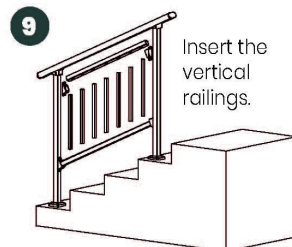
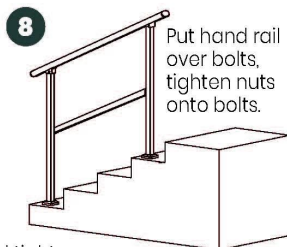
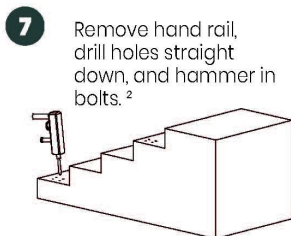
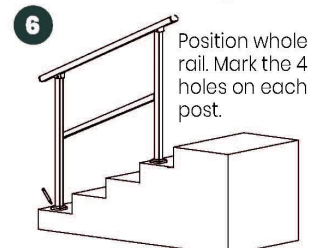
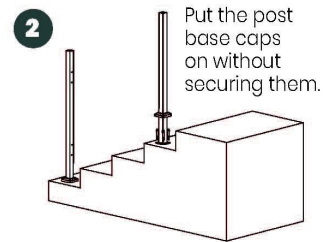
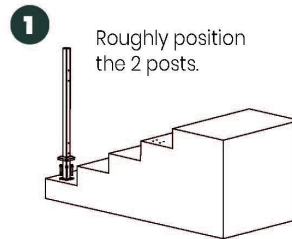
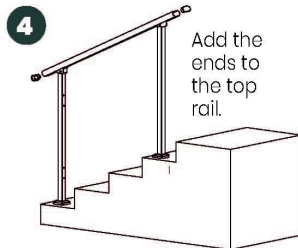
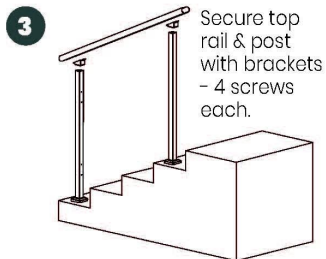


Installationsanleitungen-

Guard Rail Assembly Instructions

Tools Required: Electrical Power Drill
(Impact Drill Preferred)

Overview: Assemble the rail and position it before marking holes for drilling. Improper installation can lead to failure of rail system or injury.



² Double check posts are parallel and tight against inside rail before marking holes for drilling.

¹ Inside rail will be loose until each post is secured to the ground.

³ Push and pull top rail & inside rail to ensure all is secure.

Produktion&VerpackungvonTreppeStahlHandläufebeimunsereWerkstatt-



