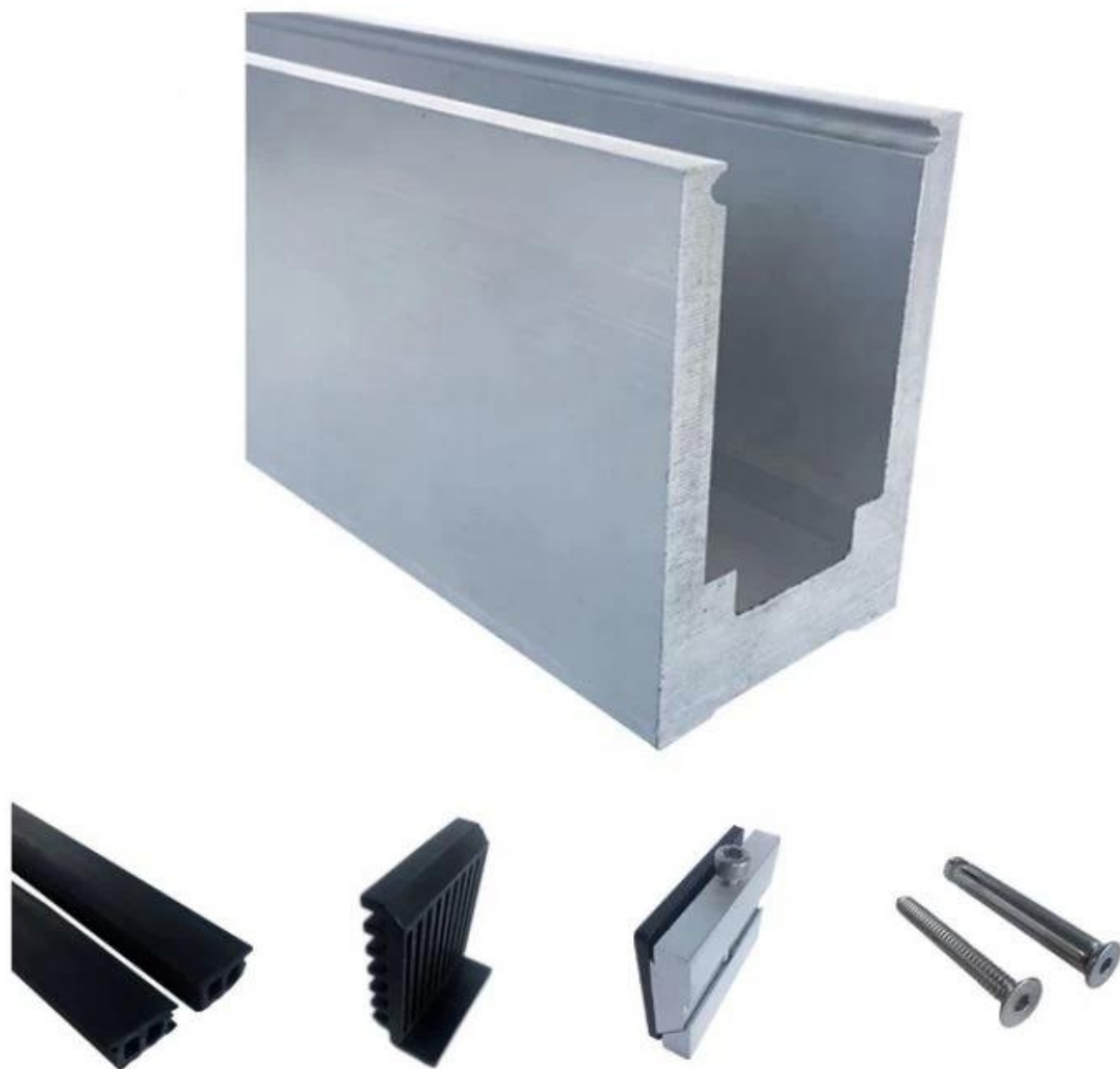


Das Basis-U-Profil aus Aluminium wird normalerweise am Boden befestigt und an der Unterseite von Glasbalustradensystemen platziert, um das Glas zu stützen. Balkongeländersysteme gehören zu den am häufigsten benötigten Anwendungen, da sie einen weiten Ausblick bieten, damit Sie die schöne Landschaft genießen können, während Sie auf dem Balkon einen Kaffee trinken oder ein Buch lesen.

Produktshow

Stabiler Aluminium-Kanalsockel

Beschläge: Wasserdichtes Klebeband, Kunststoff- und Aluminiumverbinder, Dehnbolzen



Hohles Design mit Aluminium-Basiskanal

Beschläge: Wasserdichtes Klebeband, Kunststoff- und Aluminiumverbinder, Dehnbolzen



Arten von Basis-U-Profilen aus Aluminium

LCH-A01/A02

LCH-A01



20 mm to 21.52 mm tempered glass

1 m aluminium groove contains the following accessories (excluding glass)



LCH-A02



20 mm to 21.52 mm tempered glass

1 m aluminium groove contains the following accessories (excluding glass)



LCH-B01/B02

LCH-B01



16 mm to 17.52 mm tempered glass

1 m aluminium groove contains the following accessories (excluding glass)



LCH-B02



16 mm to 17.52 mm tempered glass

1 m aluminium groove contains the following accessories (excluding glass)



LCH-C01/C02

LCH-C01



12 mm to 13.14 mm tempered glass

1 m aluminium groove contains the following accessories (excluding glass)



Aluminum trough 1 m Waterproof tape 2 meters



Aluminum plastic fittings 3 sets



Expansion screws 3 pieces

LCH-C02



12 mm to 13.14 mm tempered glass

1 m aluminium groove contains the following accessories (excluding glass)



Aluminum trough 1 m Decorative cover 2 meters



Aluminum plastic fittings 3 sets



Expansion screws 3 pieces

LCH-D01/D02

LCH-D01



12 mm to 13.14 mm tempered glass

1 m aluminium groove contains the following accessories (excluding glass)



Aluminum trough 1 m Waterproof tape 2 meters



Aluminum plastic fittings 3 sets



Expansion screws 3 pieces

LCH-D02



12 mm to 13.14 mm tempered glass

1 m aluminium groove contains the following accessories (excluding glass)



Aluminum trough 1 m Decorative cover 2 meters



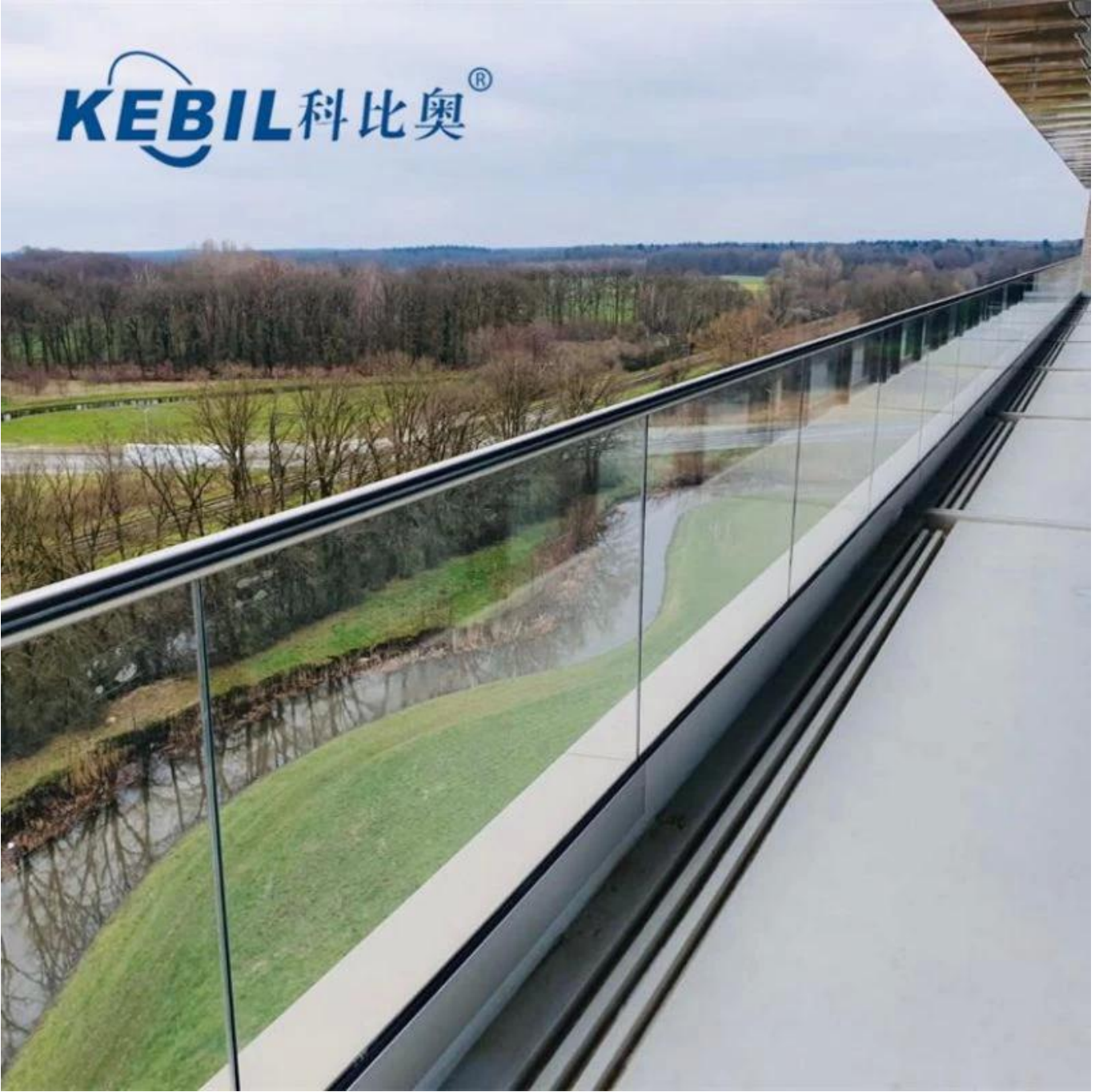
Aluminum plastic fittings 3 sets



Expansion screws 3 pieces

Projektzeichnungen

KEBIL 科比奥®





Alle U-Kanal-Systeme

U-Channel System



U-BASE CHANNEL

- Made of aluminum 6063 T5
- For use with 10-12mm glass
- 80x35mm
- 5.8m per length or as per your requirement



U-BASE CHANNEL

- Made of aluminum 6063 T5
- For use with 15-19mm glass
- 65.3x104mm
- 5.8m per length or as per your requirement



U-TOP CHANNEL

- Made of stainless steel 316L
- For use with 10-12mm glass
- ϕ 25.4mm
- 5.8m per length , or as per your requirement



U-TOP CHANNEL

- Made of stainless steel 316L
- For use with 10-12mm glass
- 25x20mm,
- 5.8m per length , or as per your requirement

Wenn Sie Fragen haben, können Sie sich gerne an uns wenden.

Frank Fang

Telefon/WhatsApp/Wechat: 8615906261741

Skype:Start 02

E-Mail: sales02@launch-china.cn