

**Fabrikpreis, Direktverkauf, für den Außenbereich, 2-3 Stufen, passend für Handlauf-Set aus schwarzem Schmiedeeisen, Treppengeländer, Balustraden und Handläufe**

Produktname	Geländer aus verzinktem Stahl	Normale Größe	H 1,1 M*B 1,2 M
Limit hoch	2 M	Rohrdicke	1,2-2,5 mm
Startcharge	20 m oder 20□	Ort des Produkts	Provinz Guangdong, China
Material	Stahl	Berechnungsmethode für den Stückpreis	Höhe unter 1,2 m in Metern, Höhe über 1,2 m im Quadrat
Handwerk	zusammengebaut und verschweißt	Oberflächenbehandlung	Pulverbeschichtet



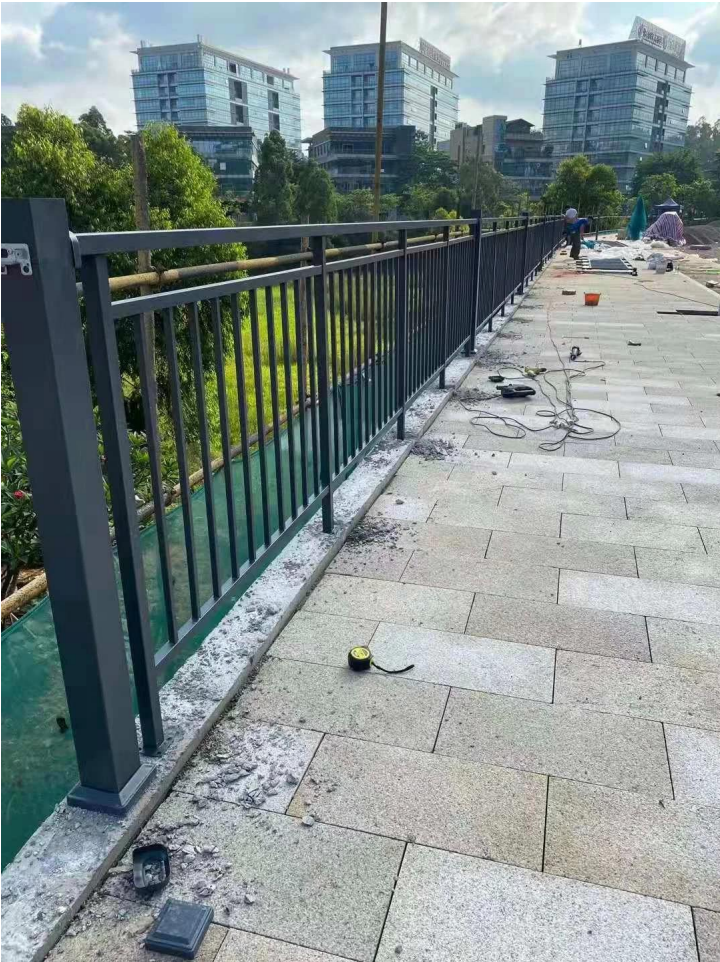












## Montage:





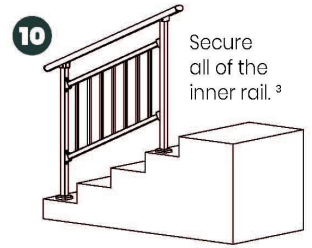
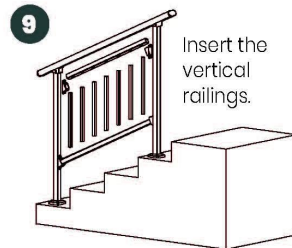
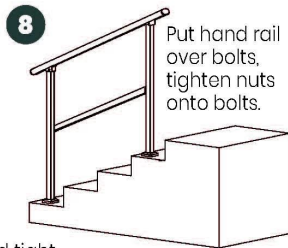
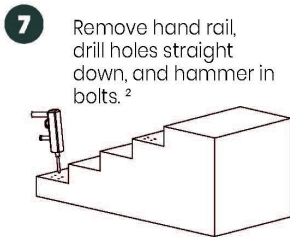
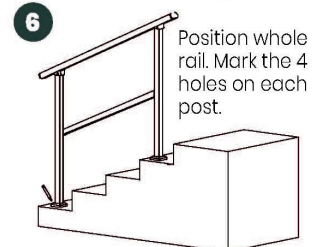
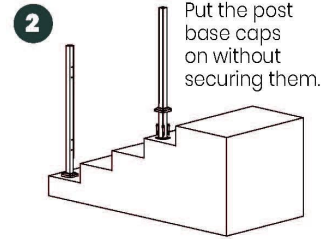
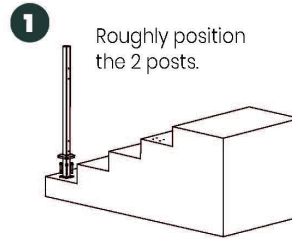
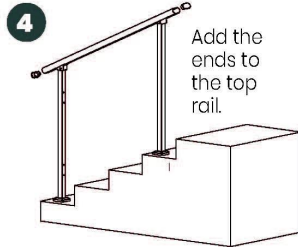
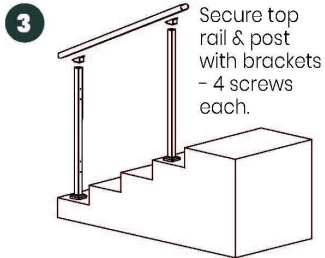


**Installationsanleitungen:**

# Guard Rail Assembly Instructions

**Tools Required:** Electrical Power Drill  
(Impact Drill Preferred)

**Overview:** Assemble the rail and position it before marking holes for drilling. Improper installation can lead to failure of rail system or injury.



<sup>2</sup> Double check posts are parallel and tight against inside rail before marking holes for drilling.

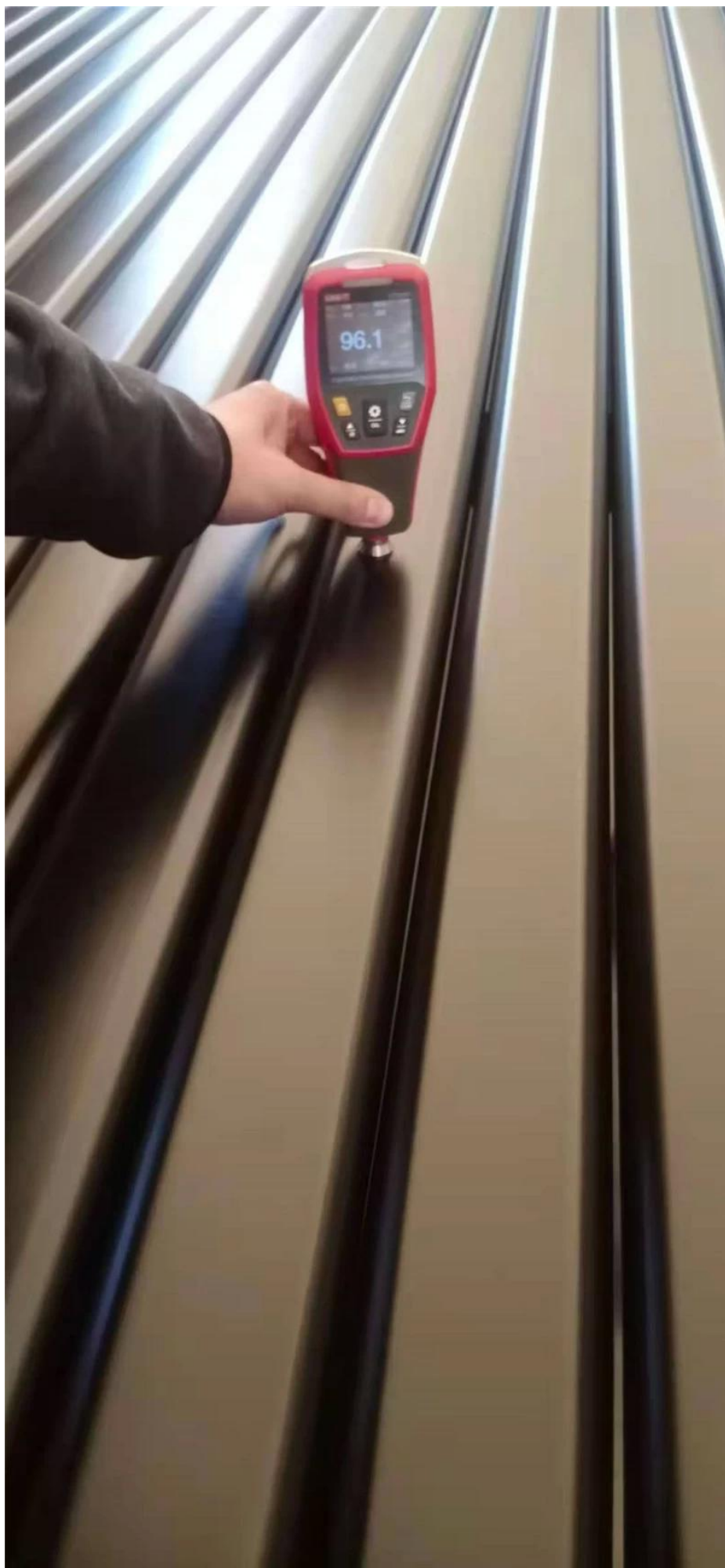
<sup>1</sup> Inside rail will be loose until each post is secured to the ground.

<sup>3</sup> Push and pull top rail & inside rail to ensure all is secure.

**Produktion & Verpackung von Treppe Stahl Handläufe bei unser Werkstatt:**















**Bitte fühlen frei Zu Kontakt uns für mehr Einzelheiten:**

**Kontakt: Wendy**



**Email: [sales04@launch-china.cn](mailto:sales04@launch-china.cn)**

**HP/WhatsApp: 86159 8933 9827**