

WHY CHOOSE US



15 YEARS EXPERIENCE

We have been manufacturing railing hardware since 2004.



ONE STOP SERVICE

We provide integrated railing solutions. We manufacture. We deliver.



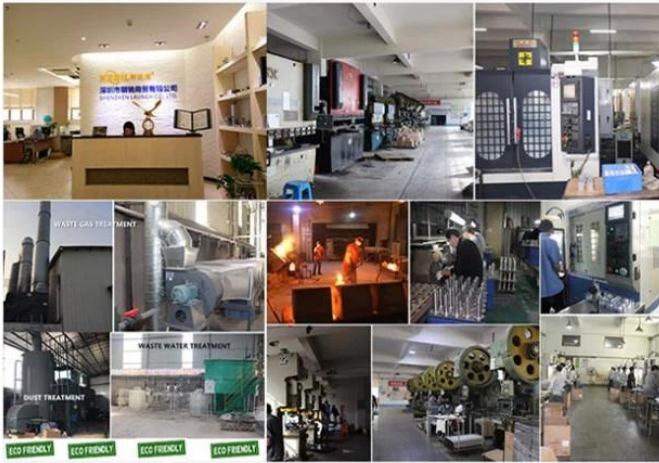
PROFESSIONAL R&D TEAM

We have engineering experts for developing new products.



TOP QUALITY & GOOD PRICE

We are strict on quality control as well as cost evaluation.



ABOUT US

Shenzhen Launch Co., Ltd was established in 2004, located at Nanshan District, Shenzhen, and one hour by car from Hongkong International Airport. Our main products are high-grade building materials including stainless steel balustrade post, staircase handrail, balcony guardrail, swimming pool fence and other high-grade building materials. All the products are designed strictly according to the high-end market requirements. We have our own factory in Tangxia Town, Dongguan, with more than 50 sets of various precision equipments, such as CNC lathe, milling machine, punching machine, pipe cutter, argon welder, drilling machine, polisher, etc. which can provide customers with complete product processing services.

Rahmenloses Glasgeländersystem Aluminium U-Kanal-Glasgeländer

AluminiumUKanalGeländerProfilSpezifikationen

- Material: Aluminium 6063 T5
- Finish: Anodisieren
- Länge: 4m pro Länge oder benutzerdefinierte Länge
- Für Glasdicke: 12-21.52mm gehärtetes Glas
- Verkauft als Kit: einschließlich Bolzen, Gummikanal und Armaturen

Aluminium u Kanal für 12 mm Glas

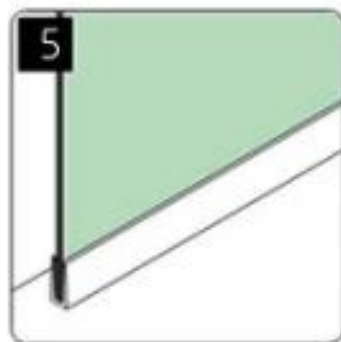
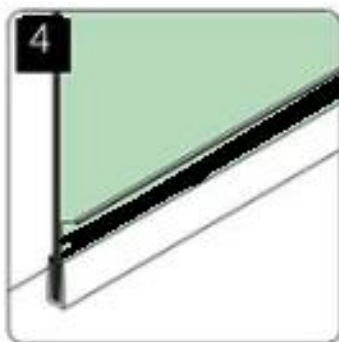
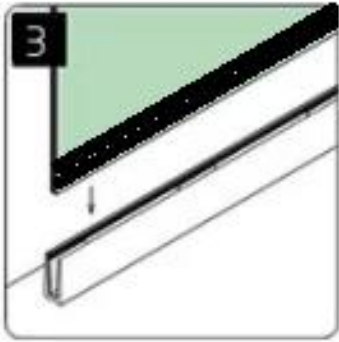
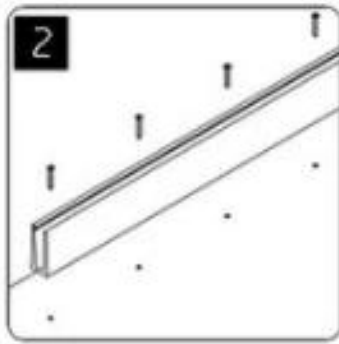
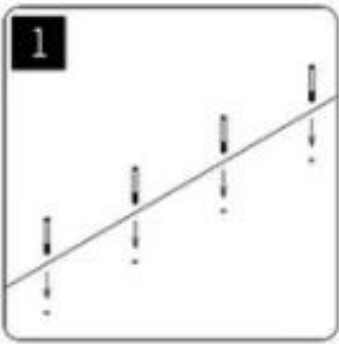
KEBIL 科比奥®





Aluminium u Kanalinstallation

installation



Andere Modelle Aluminium u Kanal, das Sie interessieren könnten

LCH-C01



12 mm to 13.14 mm tempered glass

1 m aluminium groove contains the following accessories (excluding glass)



Aluminum trough 1 m Waterproof tape 2 meters

Aluminum plastic fittings 3 sets

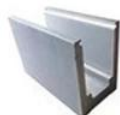
Expansion screws 3 pieces

LCH-C02



12 mm to 13.14 mm tempered glass

1 m aluminium groove contains the following accessories (excluding glass)



Aluminum trough 1 m

Decorative cover 2 meters

Aluminum plastic fittings 3 sets

Expansion screws 3 pieces

LCH-D01



12 mm to 13.14 mm tempered glass

1 m aluminium groove contains the following accessories (excluding glass)



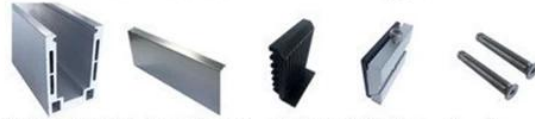
Aluminum trough 1 m Waterproof tape 2 meters Aluminum plastic fittings 3 sets Expansion screws 3 pieces

LCH-D02



12 mm to 13.14 mm tempered glass

1 m aluminium groove contains the following accessories (excluding glass)



Aluminum trough 1 m Decorative cover 2 meters Aluminum plastic fittings 3 sets Expansion screws 3 pieces

LCH-B01



16 mm to 17.52 mm tempered glass

1 m aluminium groove contains the following accessories (excluding glass)



Aluminum trough 1 m Waterproof tape 2 meters Aluminum plastic fittings 3 sets Expansion screws 3 pieces

LCH-B02



16 mm to 17.52 mm tempered glass

1 m aluminium groove contains the following accessories (excluding glass)



Aluminum trough 1 m Decorative cover 2 meters Aluminum plastic fittings 3 sets Expansion screws 3 pieces

LCH-A01



20 mm to 21.52 mm tempered glass

1 m aluminium groove contains the following accessories (excluding glass)



Aluminum trough 1 m

Waterproof tape 2 meters

Aluminum plastic fittings 3 sets

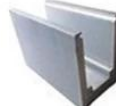
Expansion screws 3 pieces

LCH-A02



20 mm to 21.52 mm tempered glass

1 m aluminium groove contains the following accessories (excluding glass)



Aluminum trough 1 m

Decorative cover 2 meters

Aluminum plastic fittings 3 sets

Expansion screws 3 pieces

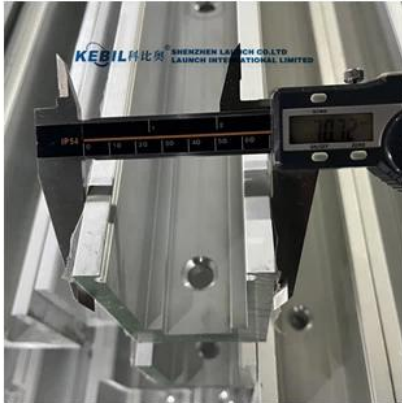
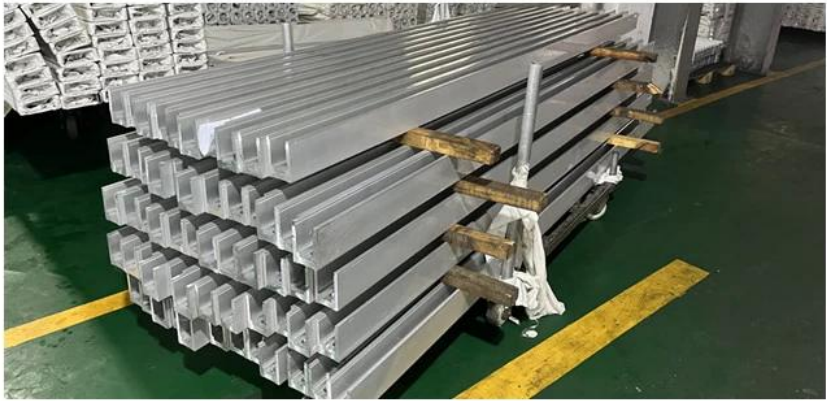
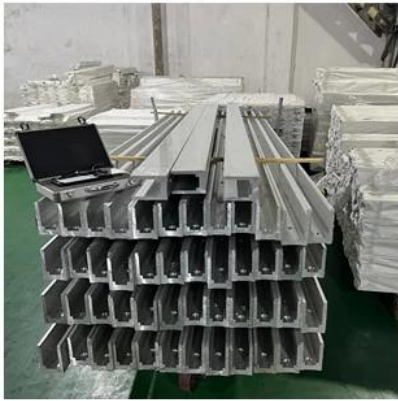
Alumnum U Channel Railing-Projektfotos







Aluminium U-Kanal-Packge

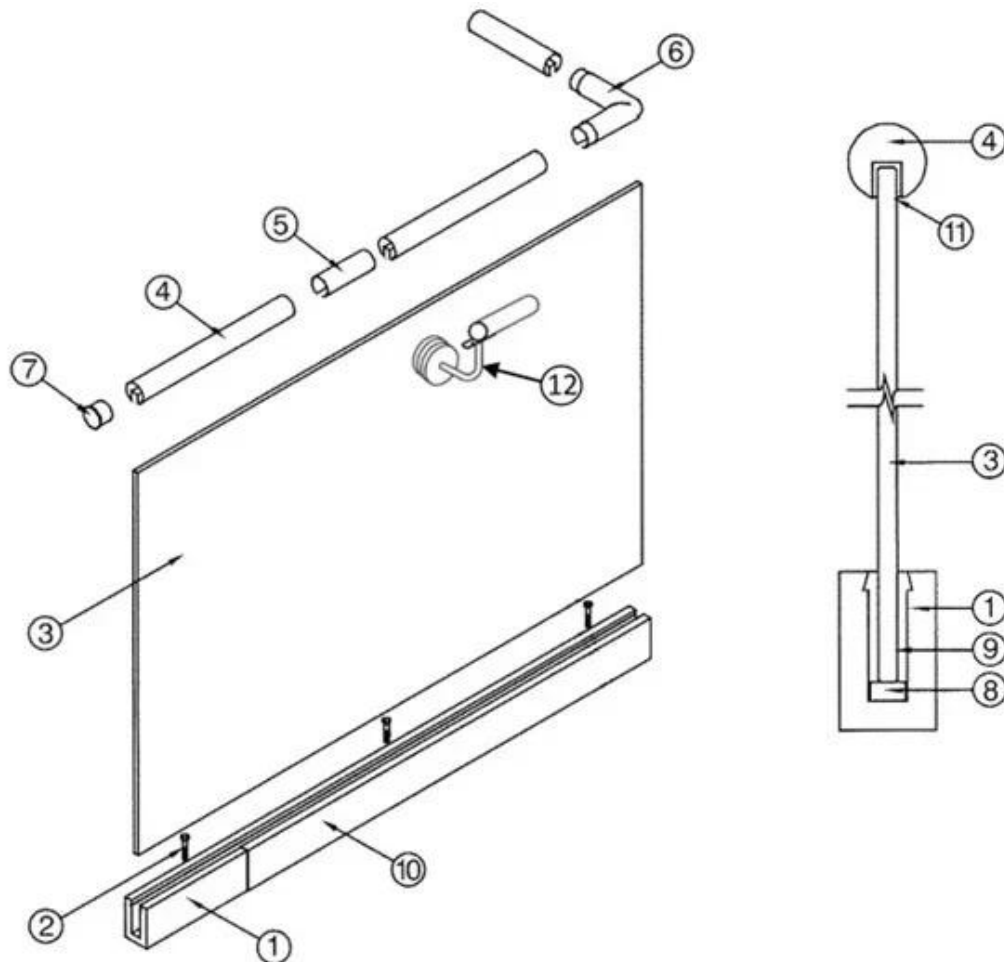




VerwandtProdukte- Edelstahl C-Kanal-Glas-Handlauf-Capping

KEBIL 科比奥® SHENZHEN LAUNCH CO.LTD
LAUNCH INTERNATIONAL LIMITED





- | | |
|--|--|
| 1. Aluminum Railing Base | 7. End Cap |
| 2. Stainless Cap Screw | 8. Setting Block |
| 3. ½" Tempered Float Glass | 9. Expansive Cement |
| 4. Top Rail | 10. Cladding |
| 5. Splice | 11. Protective Insert |
| 6. Corner fitting
(Horizontal Shown Vertical
Also Available) | 12. Handrail Brackets and Fittings
Also Available |

Kontakt

Danke für Ihren Besuch ! Fragen oder Anfragen, bitte hinterlassen Sie eine Nachricht.
Kommen Sie innerhalb von 24 Stunden bei Ihnen.

Jede dringende Untersuchung, bitte kontaktieren Sie uns unten:

-Kontakt: Wendy.

-Email: sales04@launch-china.cn.

-Office: (86-755) 86037559

-Mob / Was ist App: 0086-15989339827

-Skype: Launch_04.