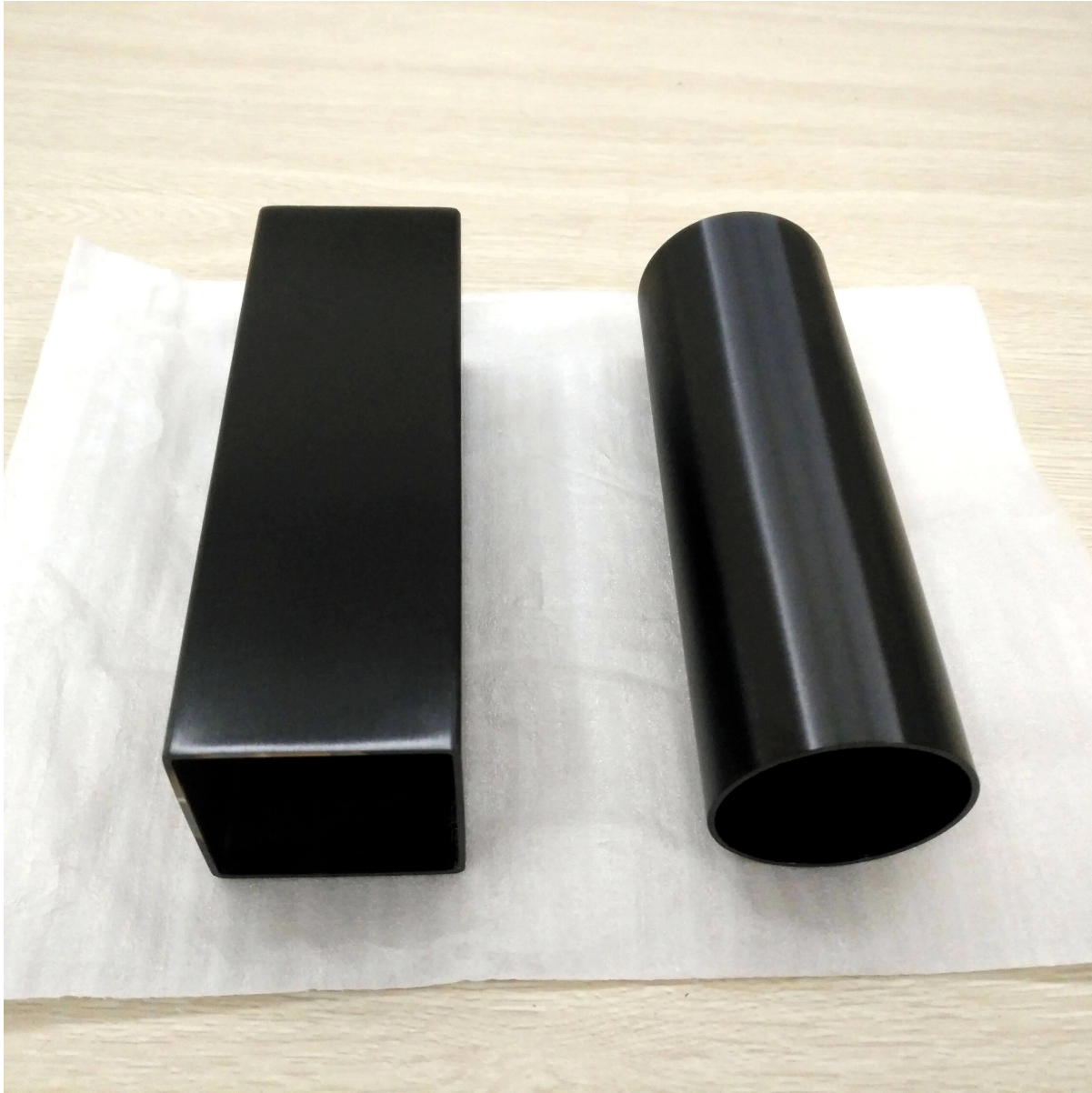
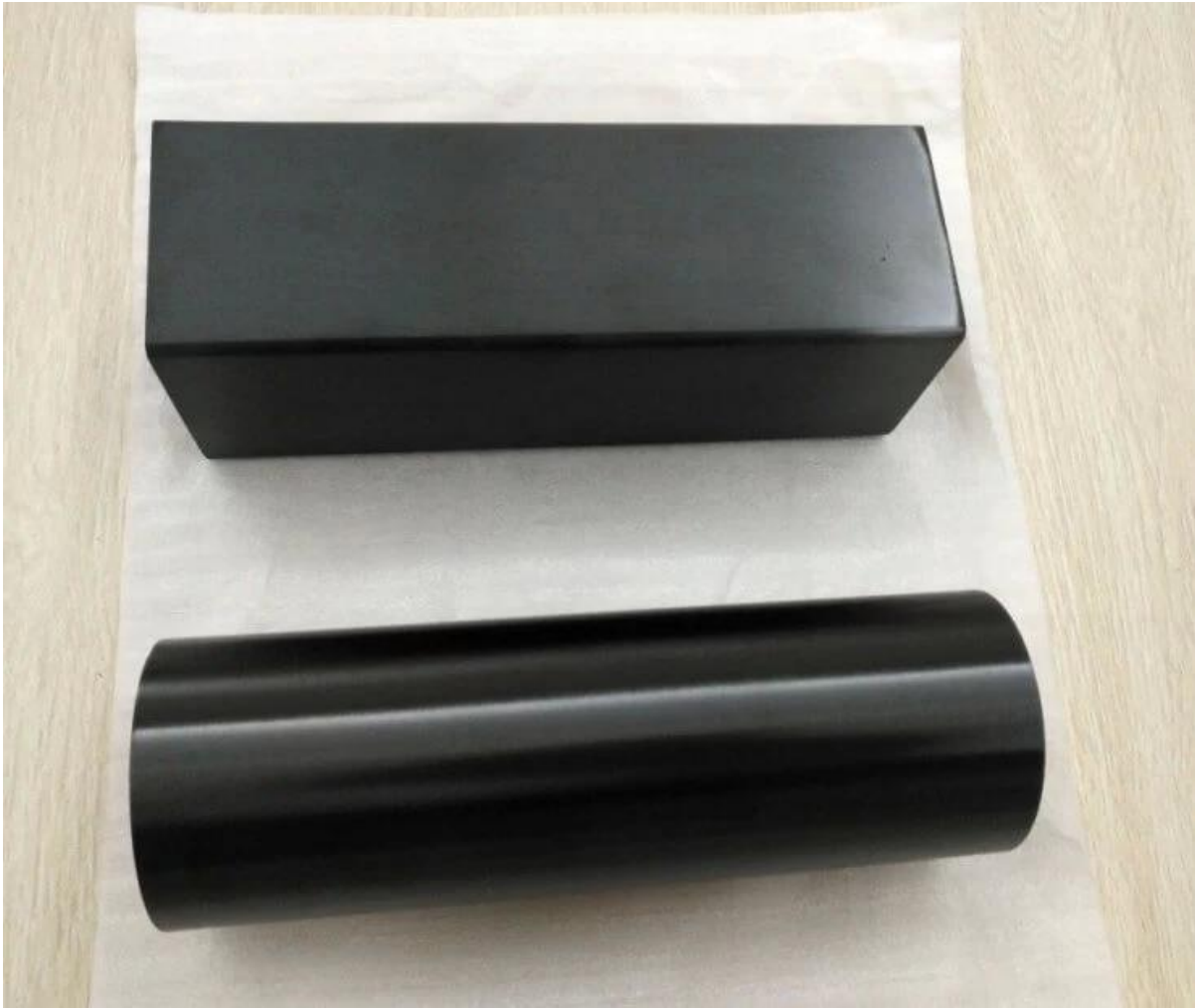


Vacuum Plating Matt Schwarz Edelstahl Handlauf Rohr





Verschiedene Arten Edelstahlrohr verfügbar:

STAINLESS STEEL HANDRAIL TUBE

Round tube	
Material	Stainless steel 304L /316L
Finish	Satin or mirror
Sizes	Ø 38.1 x 1.5 mm Ø 42.4 x 1.5 mm Ø 50.8 x 1.5 mm



Square tube	
Material	Stainless steel 304L /316L
Finish	Satin or mirror
Sizes	38 x 38 x 1.5 mm 40 x 40 x 1.5 mm 50 x 50 x 1.5 mm



Rectangular tube	
Material	Stainless steel 304L /316L
Finish	Satin or mirror
Sizes	50 x 10 x 1.5 mm 50 x 25 x 1.5 mm

STAINLESS STEEL SLOT HANDRAIL TUBE

Round slot tube	
Material	Stainless steel 304L /316L
Finish	Satin or mirror
Sizes	Ø 38 x 1.5 , 15x15mm single slot Ø 42x1.5 mm , 15x15mm / 24x24mm single slot Ø 50.8x1.5 mm , 15x15mm single slot



Square slot tube	
Material	Stainless steel 304L /316L
Finish	Satin or mirror
Sizes	- 31.8x31.8x1.5 , 15x15 mm single slot - 40x40x1.5 , 15x15 mm / 20x20mm single slot - 50x25x1.5 , 15x15mm single /double slot



# 2 Doppelschlitzrohr, 2-Wege 180 Grad:



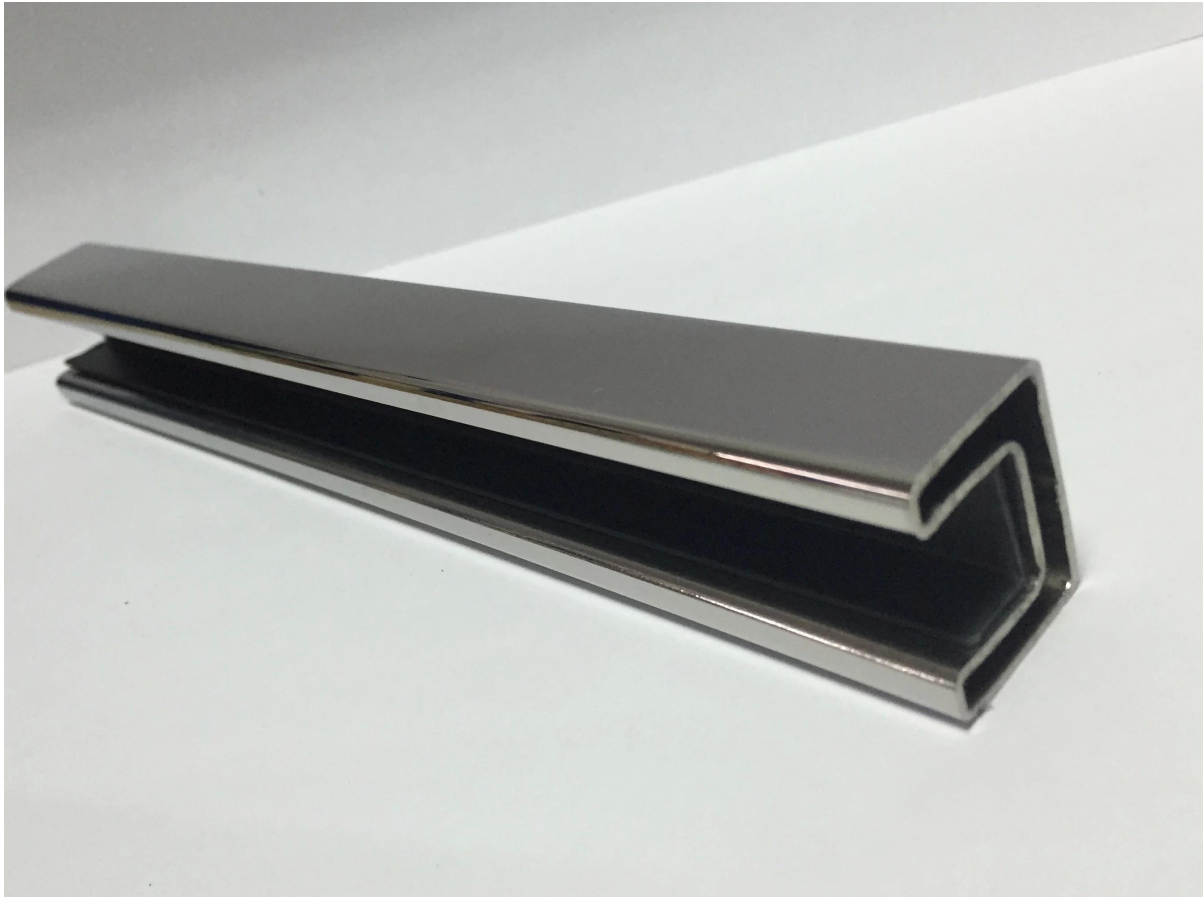
# 3 Doppelschlitzrohr, 2-Wege 90 Grad:



# 4. 40 x 40 x 1,5 mm, 15 x 15 mm / 20 x 20 mm Einzel Schlitzrohr:



# 5. 20 x 25 x 1,2 mm, 14 x 14 mm Einzelschlitzrohr:



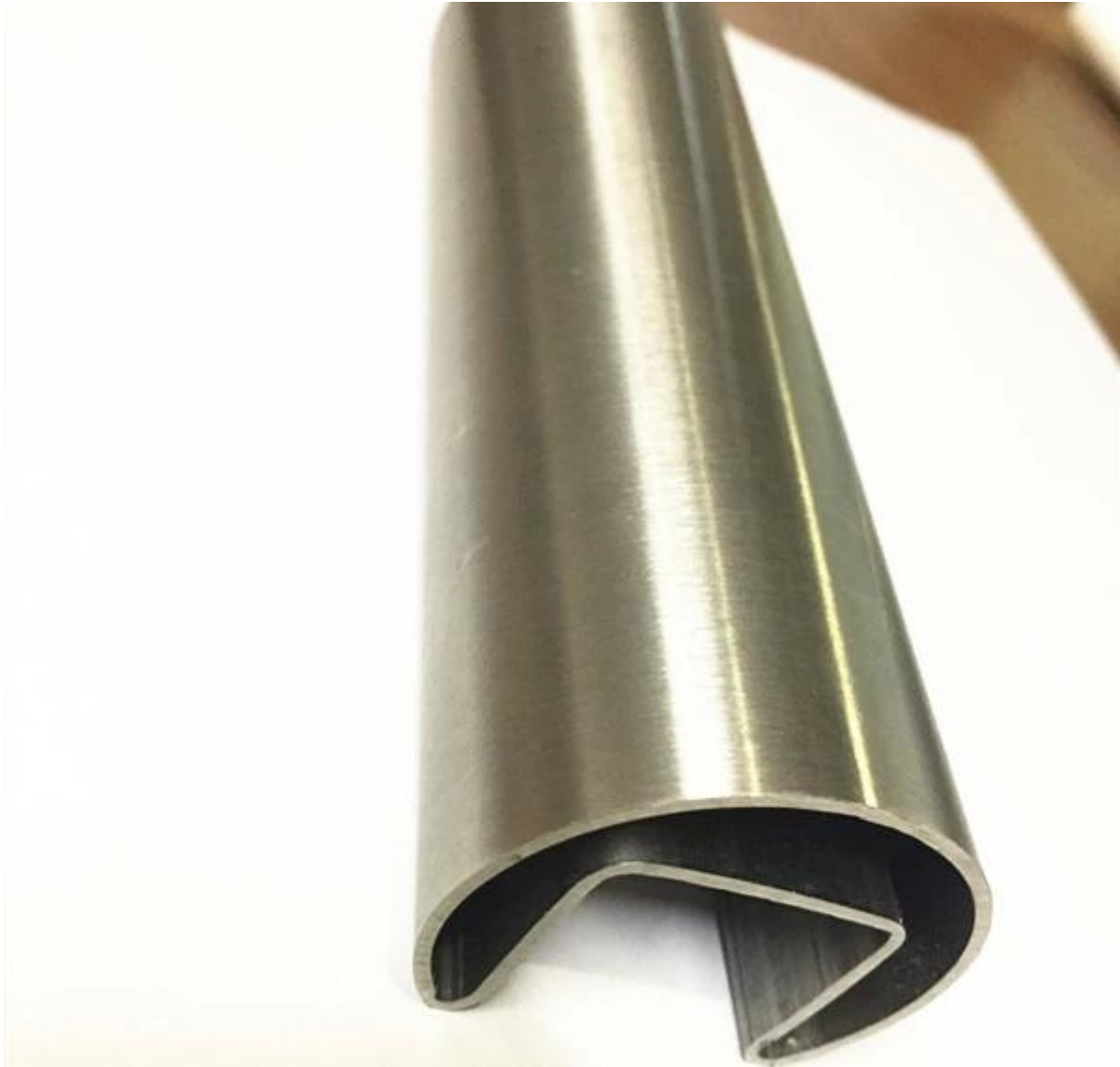
# 5. Durchmesser 25,4 x 1,2 mm, 14 x 14 mm Einzelschlitzrohr:





# 6. Durchmesser 31,8 x 1,5 mm, 15 x 15 mm Einzelschlitzrohr:





Danke für deinen Besuch. Interessiert, bitte kontaktieren Sie uns frei:

Skype: [Start-02](#) . Email: [sales02@launch-china.cn](mailto:sales02@launch-china.cn) .