

Scharnier Beschreibung:

Pool &nbsp; Tor Glas &nbsp; Frühling Scharnier

Modell: Glas &nbsp; zu Glas &nbsp; Scharnier

Model &nbsp; Kein .: G-G2

Pool Gate &nbsp; Hardware &nbsp; Kit &nbsp; enthält &nbsp; 1 &nbsp; X &nbsp;

MagnWDV latch and 2 X Self-closing hinges ,all screws and free installation toole.

Marine grade STAINLESS STEEL 316 made with a fantastic great MIRROR oder &nbsp; SATIN Polish &nbsp; Abgang.

Anzüge &nbsp; 8mm/ 10mm / 12mm ESG &nbsp; Glas &nbsp; Tor

Model &nbsp; G-G2 Glas &nbsp; zu Glas &nbsp; Pool Tor Scharnier

2 &nbsp; von &nbsp; selbstschlieÙ &nbsp; Frühjahr Scharnier &nbsp; Anzug &nbsp; Glas / &nbsp; Glas &nbsp; Anwendung



G-G2 Scharnier &nbsp; Dimension:

1 &nbsp; von &nbsp; Glas &nbsp; zu Glas Scharnier 80Millimeter BREITE

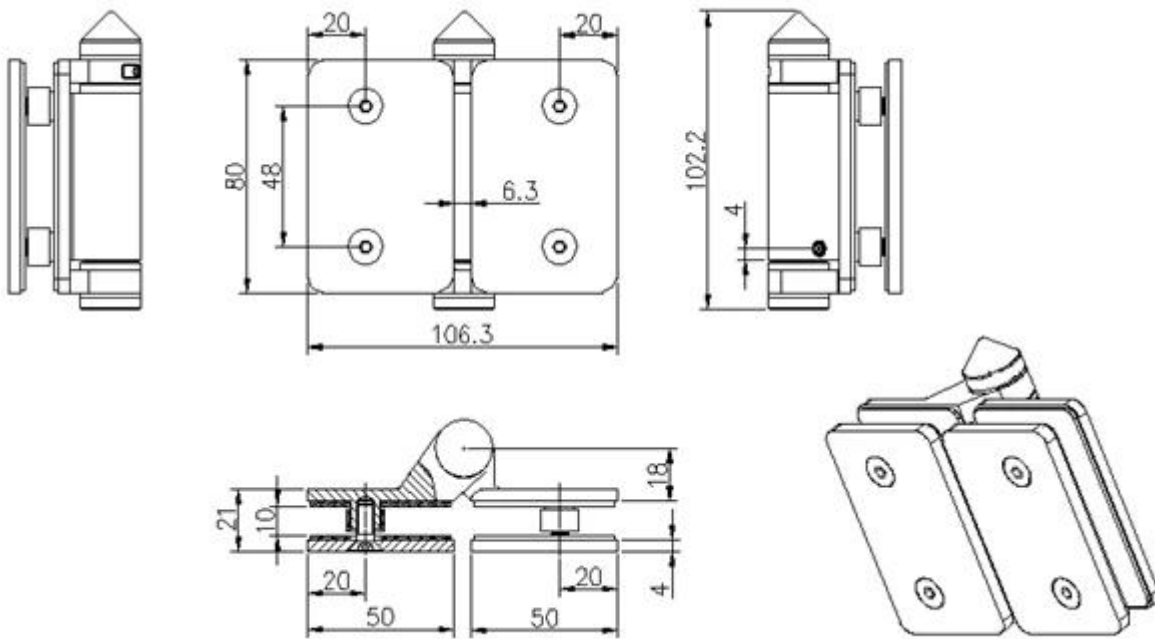
1 &nbsp; von &nbsp; Glas &nbsp; zu Glas Scharnier 106,3Millimeter LÄNGE

1 &nbsp; von &nbsp; Glas &nbsp; &nbsp; Glas &nbsp; Scharnier &nbsp; 21mm &nbsp; THIKCNESS

Entfernung &nbsp; zwischen &nbsp; zwei &nbsp; Schrauben &nbsp; 48Millimeter

Entfernung &nbsp; von &nbsp; schrauben &nbsp; &nbsp; Scharnier &nbsp; Rand: &nbsp; 20mm

Bitte &nbsp; beziehen &nbsp; &nbsp; unten &nbsp; Dimension &nbsp; Zeichnung:



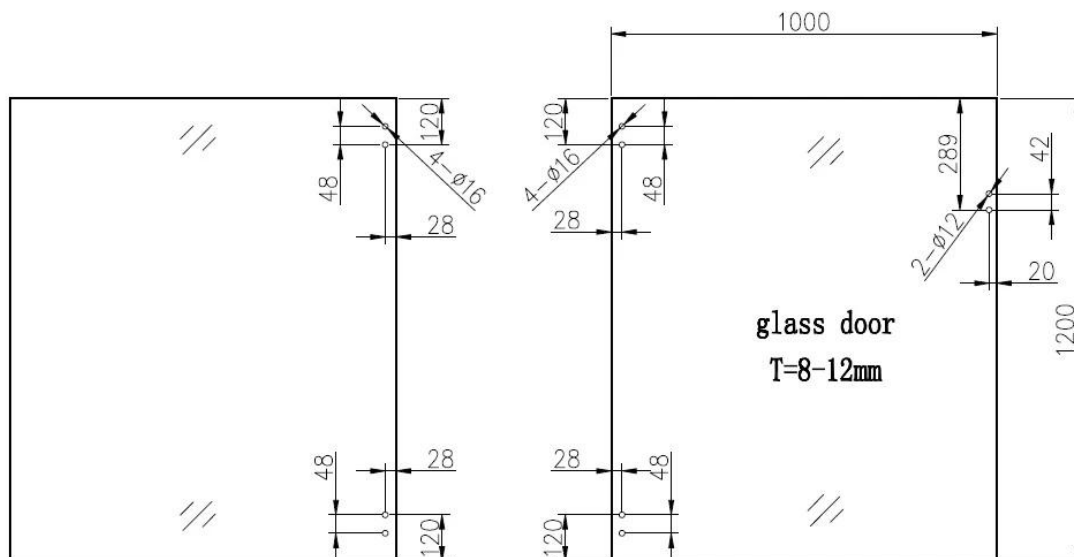
G-G2 Scharnier & nbsp; technische & nbsp; Informationen:

Glas & nbsp; Gate & nbsp;; & nbsp; Lücke & nbsp; 18mm, & nbsp; Anzüge & nbsp; 8/  
10/12mm toughened glass gate, will fit onto 10/12mm fixed glass

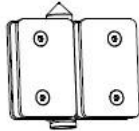
1 & nbsp; von & nbsp; Glas & nbsp; zu Glas Scharnier mit 2 & nbsp; Schrauben & nbsp; GAP 42 Millimeter  
Pool & nbsp; Gate & nbsp; Glas & nbsp; Panel & nbsp; Loch & nbsp; - 20mm & nbsp; in & nbsp; von &  
& nbsp; Glas & nbsp; Rand, & nbsp; 42mm & nbsp; auseinander.

Glas & nbsp; Gate & nbsp;; & nbsp; Lücke & nbsp; 18mm, & nbsp; Anzüge & nbsp; 8/ 10/12mm & nbsp;  
ESG & nbsp; Glas & nbsp; Tor

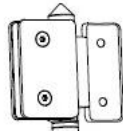
Bitte & nbsp; Download & nbsp; hier & nbsp; für & nbsp; & nbsp; technische & nbsp; Zeichnung:



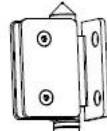
1. Glass-Glass hinge, Glass to Wall hinge and Glass to Round post hinge are suitable for 1000x1200mm glass gate 8-12mm thick .  
When you open the glass gate it will close automatically .
2. Our glass hinges are made by precision casting with stainless steel 316 material , satin and mirror finish optional .
3. Our hinges must be applied on tempered glass .



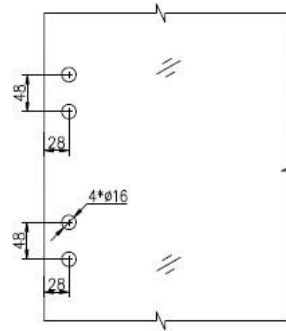
**Glass to Glass**



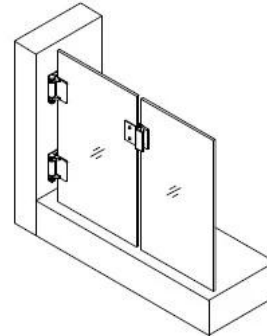
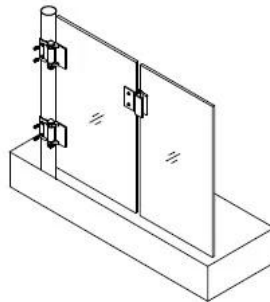
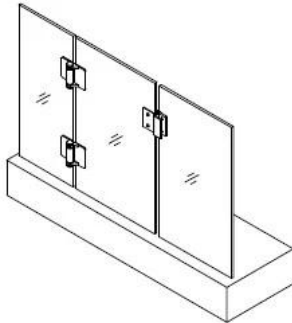
**Glass to Round post**



**Glass to Wall**



**Hole dimensions**



Für Glas & nbsp; Pool & nbsp; Tor Scharnier & Amp; & nbsp; Installations, Bitte & nbsp; sehen & nbsp; unten & nbsp; vedio & nbsp; Link:

<https://www.youtube.com/watch?v=DKZIF0cAt1M>

Für Glas & nbsp; Pool & nbsp; Tor Scharnier Verpackung, Bitte & nbsp; unten & nbsp; Verpackung & nbsp; Fotos:



