

PolvorestimientoBFalta de rieles de mano de acero de color para escalera.exteriorointeriorusar.Se proporcionará todos los paréntesis / tornillos necesarios.

Accesarios para rieles de mano de acero.

Pasada de la escalera de barandilla intermedia para poste del soporte -



Handrail de la escalera Barra media, 32 \* 32mm -



Handrail de escalera Post 40 \* 40mm-



Escalera Top Handrail Tube-



Después del montaje-



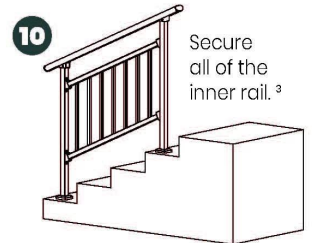
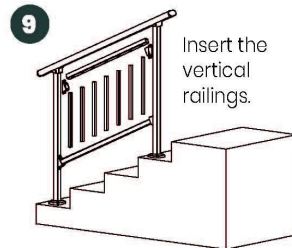
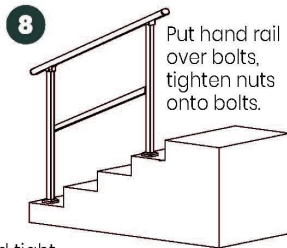
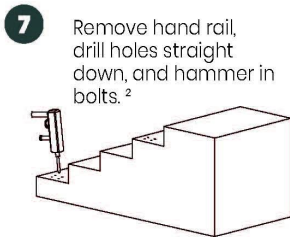
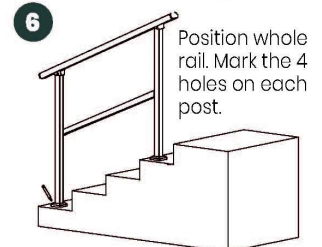
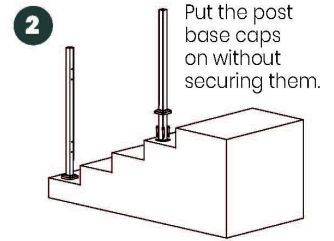
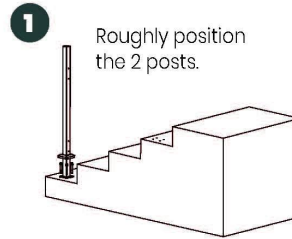
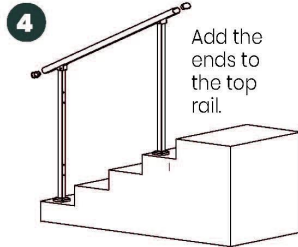
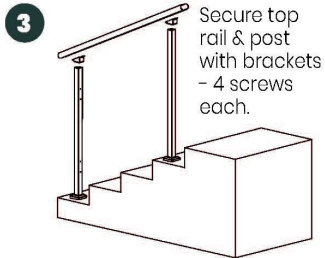


Guías de instalación-

# Guard Rail Assembly Instructions

**Tools Required:** Electrical Power Drill  
(Impact Drill Preferred)

**Overview:** Assemble the rail and position it before marking holes for drilling. Improper installation can lead to failure of rail system or injury.



<sup>2</sup> Double check posts are parallel and tight against inside rail before marking holes for drilling.

<sup>1</sup> Inside rail will be loose until each post is secured to the ground.

<sup>3</sup> Push and pull top rail & inside rail to ensure all is secure.



