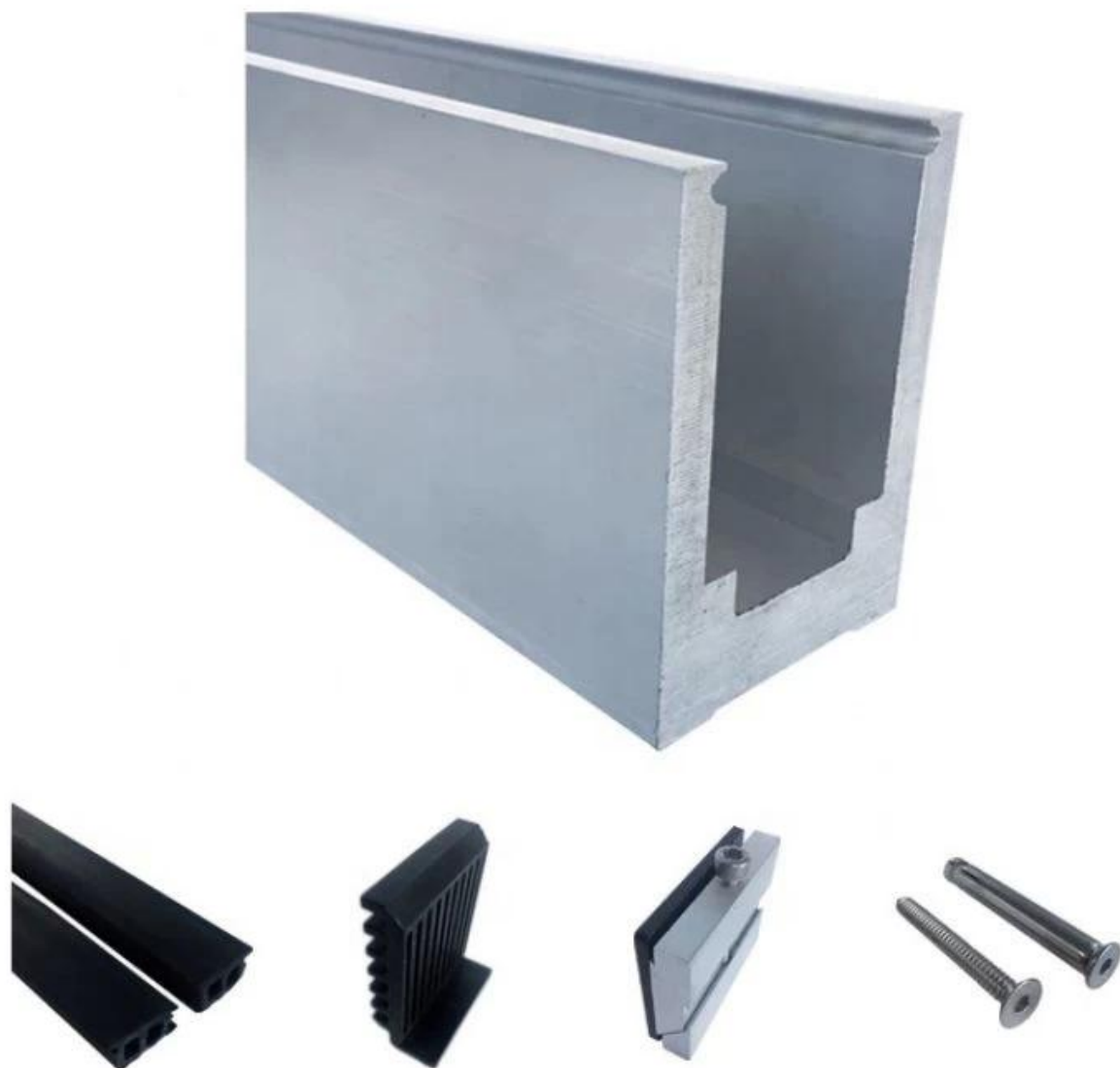


Canal base en U de aluminio generalmente fijado al suelo, colocado en la parte inferior de los sistemas de barandillas de vidrio para sostener el vidrio. Los sistemas de barandillas para balcones son una de las aplicaciones más comunes que lo necesitan, ya que pueden dar una visión amplia para disfrutar de hermosos paisajes cuando estás tomando un café o leyendo un libro en el balcón.

Presentacion de producto

Canal de base de aluminio de diseño sólido

Accesorios: cinta impermeable, accesorios de plástico y aluminio, pernos de expansión



Canal base de aluminio de diseño hueco

Accesorios: cinta impermeable, accesorios de plástico y aluminio, pernos de expansión



Tipos de canal base de aluminio U

LCH-A01 / A02

LCH-A01



20 mm to 21.52 mm tempered glass

1 m aluminium groove contains the following accessories (excluding glass)



LCH-A02



20 mm to 21.52 mm tempered glass

1 m aluminium groove contains the following accessories (excluding glass)



LCH-B01 / B02

LCH-B01



16 mm to 17.52 mm tempered glass

1 m aluminium groove contains the following accessories (excluding glass)



LCH-B02



16 mm to 17.52 mm tempered glass

1 m aluminium groove contains the following accessories (excluding glass)



LCH-C01 / C02

LCH-C01



12 mm to 13.14 mm tempered glass

1 m aluminium groove contains the following accessories (excluding glass)



Aluminum trough 1 m Waterproof tape 2 meters



Aluminum plastic fittings 3 sets



Expansion screws 3 pieces

LCH-C02



12 mm to 13.14 mm tempered glass

1 m aluminium groove contains the following accessories (excluding glass)



Aluminum trough 1 m Decorative cover 2 meters



Aluminum plastic fittings 3 sets



Expansion screws 3 pieces

LCH-D01 / D02

LCH-D01



12 mm to 13.14 mm tempered glass

1 m aluminium groove contains the following accessories (excluding glass)



Aluminum trough 1 m Waterproof tape 2 meters



Aluminum plastic fittings 3 sets



Expansion screws 3 pieces

LCH-D02



12 mm to 13.14 mm tempered glass

1 m aluminium groove contains the following accessories (excluding glass)



Aluminum trough 1 m Decorative cover 2 meters



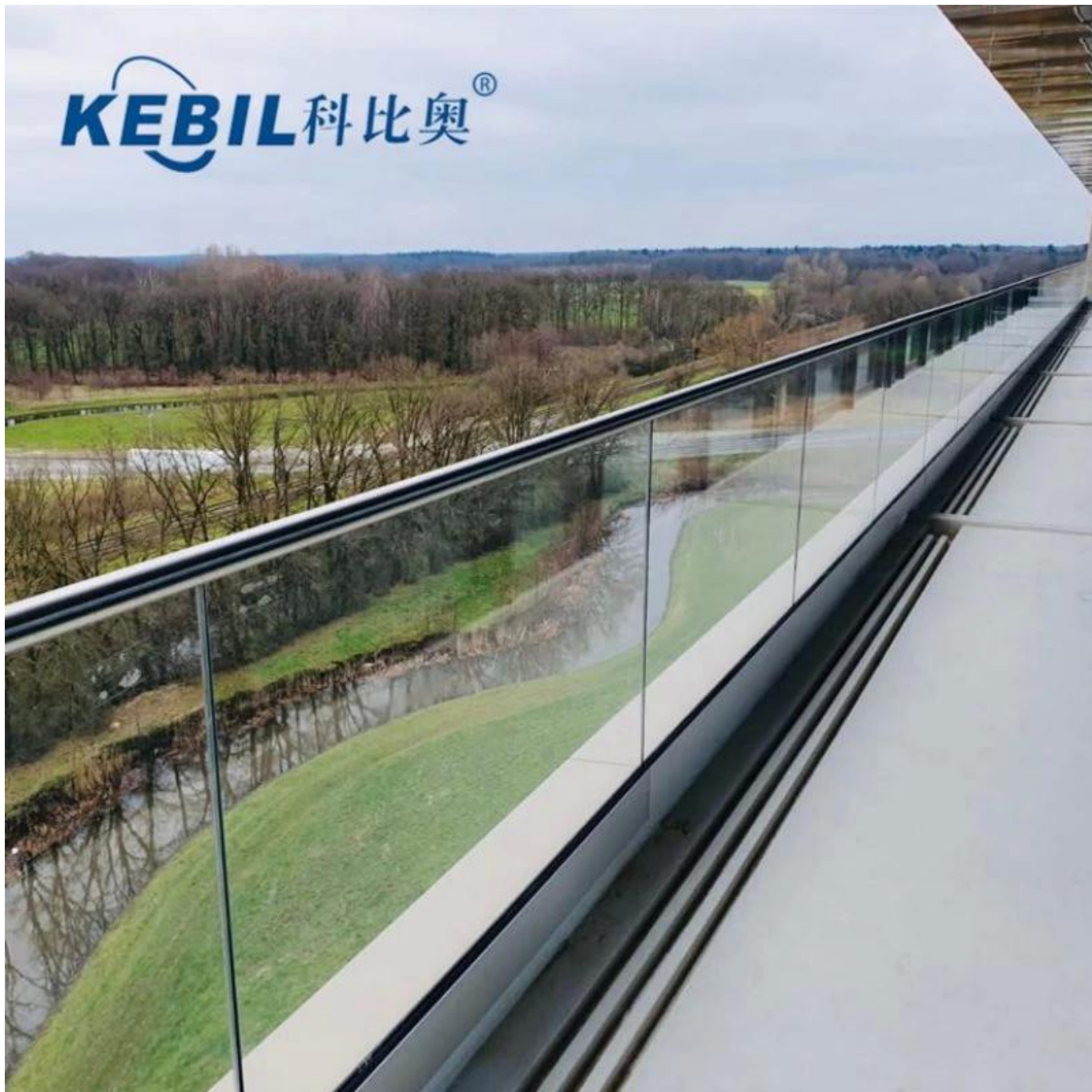
Aluminum plastic fittings 3 sets



Expansion screws 3 pieces

Dibujos del proyecto

KEBIL 科比奥®





Todos los sistemas de canal U

U-Channel System



U-BASE CHANNEL

- Made of aluminum 6063 T5
- For use with 10-12mm glass
- 80x35mm
- 5.8m per length or as per your requirement



U-BASE CHANNEL

- Made of aluminum 6063 T5
- For use with 15-19mm glass
- 65.3x104mm
- 5.8m per length or as per your requirement



U-TOP CHANNEL

- Made of stainless steel 316L
- For use with 10-12mm glass
- ϕ 25.4mm
- 5.8m per length , or as per your requirement



U-TOP CHANNEL

- Made of stainless steel 316L
- For use with 10-12mm glass
- 25x20mm,
- 5.8m per length , or as per your requirement

Si tiene alguna consulta, no dude en ponerse en contacto.

Frank Fang

Teléfono / WhatsApp / Wechat: +8615906261741

Skype: lanzamiento-02

Correo electrónico: sales02@launch-china.cn